

**Product Description:****Quick Details**

|                   |  |                   |                        |
|-------------------|--|-------------------|------------------------|
| Place of Origin   | Guang dong, China (Mainland)                       | Brand Name        | O-Leading              |
| Base Material     | FR-4,,Aluminum                                     | Copper Thickness  | 0.5oz-5oz              |
| Min. Hole Size    | 0.2mm  | Min. Line Width   | 0.2mm                  |
| Surface Finishing | immersion gold ,OSP,lead free HASL                 | Board Thickness   | 0.1-5mm                |
| applicable to     | led,mobile phone,air conditioners,washing machines | character         | Industrial Control pcb |
| certificates      | ISO9001,UL,RoHS,SGS                                | Q/CTN             | 10PCS-100PCS           |
| weight            | 0.01kg -5kg  | MOQ               | 10pcs                  |
| Model Number      | power bank pcb assembly pcba manufacturer          | Min. Line Spacing | 0.2mm                  |
| color             | blue ,red ,green,black,yellow                      | price             | \$0.1-\$10             |
| desigh type       | client requirement                                 | size              | 0.01m3-10m3            |

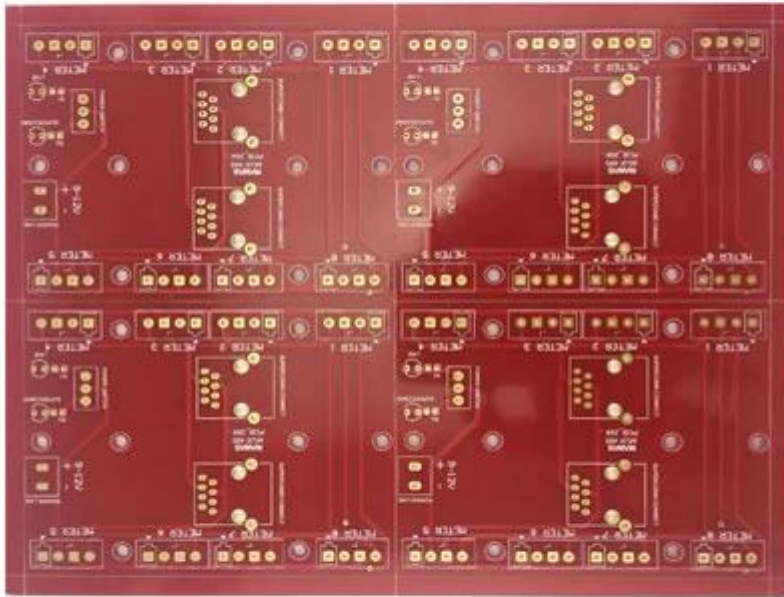
**Packaging & Delivery**

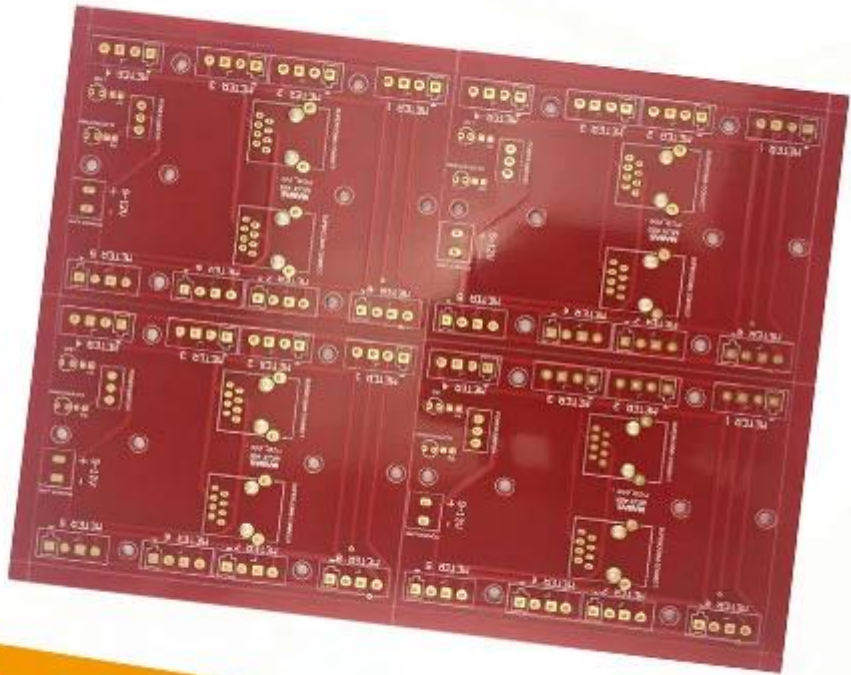
|                   |  |
|-------------------|--|
| Packaging Details | 16 years professional OEM pcb board manufacturer |
| Delivery Detail   | 7-12days   |

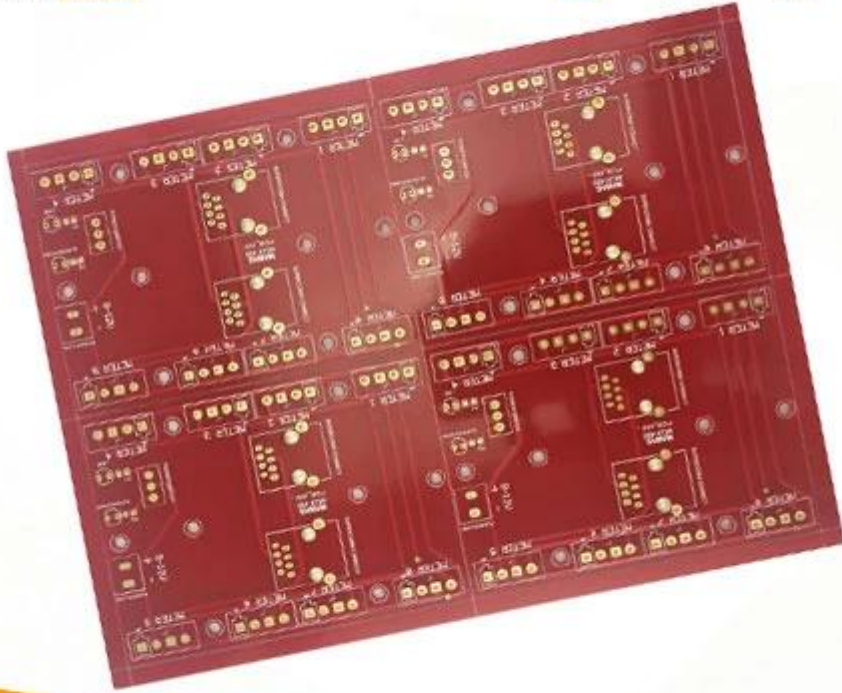
**Product Description****16 years professional OEM pcb board manufacture**

| item                                      | 2014  |        | 2015~2016 |        | 2017~2018 |        |
|---|---|--------|-----------|--------|-----------|--------|
|   | Volume  | Sample | Volume    | Sample | Volume    | Sample |
| Layer count                               | 32  | 42     | 38        | 44     | 42        | 48     |
| Min Line/space (µm)                       | 50/50   | 40/45  | 40/45     | 40/40  | 35/40     | 35/35  |
| Min drill hole diameter (mm)              | 0.15  | 0.10   | 0.15      | 0.10   | 0.15      | 0.10   |
| Aspect ratio of PTH                       | 14:1  | 16:1   | 16:1      | 18:1   | 18:1      | 20:1   |
| N+C+N                                     | 4+C+4   | 5+C+5  | 5+C+5     | 6+C+6  | 5+C+5     | 6+C+6  |
| Any layer interconnection                 | 5+2+5   | 6+2+6  | 5+2+5     | 6+2+6  | 5+2+5     | 6+2+6  |
| Plate filling via                         | YES   | --     | YES       | --     | YES       | --     |
| Min. core thickness (exclude copper) (µm) | 50  | 40     | 40        | 30     | 40        | 30     |
| Min. Laser Drill diameter (µm)            | 75  | 65     | 65        | 50     | 50        | 40     |
| Via on buried hole/stacked via            | YES   | --     | YES       | --     | YES       | --     |
| Material                                  | FR4, Megtron, Nelco, Rogers, Heavy Copper, etc. |        |           |        |           |        |

|                        |  |    |     |    |     |    |
|------------------------|--|----|-----|----|-----|----|
| Embedded capacitor PCB | YES  | -- | YES | -- | YES | -- |
| Surface Process        | Lead-free HASL, ENIG, OSP, Immersion silver, Immersion tin,<br>Flash gold, Gold finger plating, Selective hard gold plating,<br>Peelable solder mask, Carbon ink |    |     |    |     |    |







[www.o-leading.com](http://www.o-leading.com)

[led pcb board Printed circuit board,washing machine pcb board Printed circuit board](#)