

Product Description

FINISH: THIS BOARD SHALL BE IMMERSION GOLD PLATED ACCORDING TO IPC-6012.
THICKNESS SHALL BE .050uM OVER 3-6uM NICKEL.

COPPER PLATE HOLES MINIMUM .025 AVG, .020 MIN.. HOLES MAY NOT BE PLUGGED

Pack with colorless transparent bubble film ,25 PCS/ bag, put desiccant in flank, put humidity indicator card on top side

Layer structure

L1-----HOZ

- PP 7mil -

- -

L2-----1OZ

- CORE 9.05mil -

L3-----1OZ

- -

- PP 7mil -

L4-----HOZ

Layer Definitions:

*.GCMT - Top Conformal Coating Mask

*.GTP - Top Solder Paste

*.GTO - Top Silkscreen

*.GTS - Top Soldermask

*.GTL - Top Layer

*.G2L - Inner Signal Layer 1

=====

*.G3L - Inner Signal Layer 2

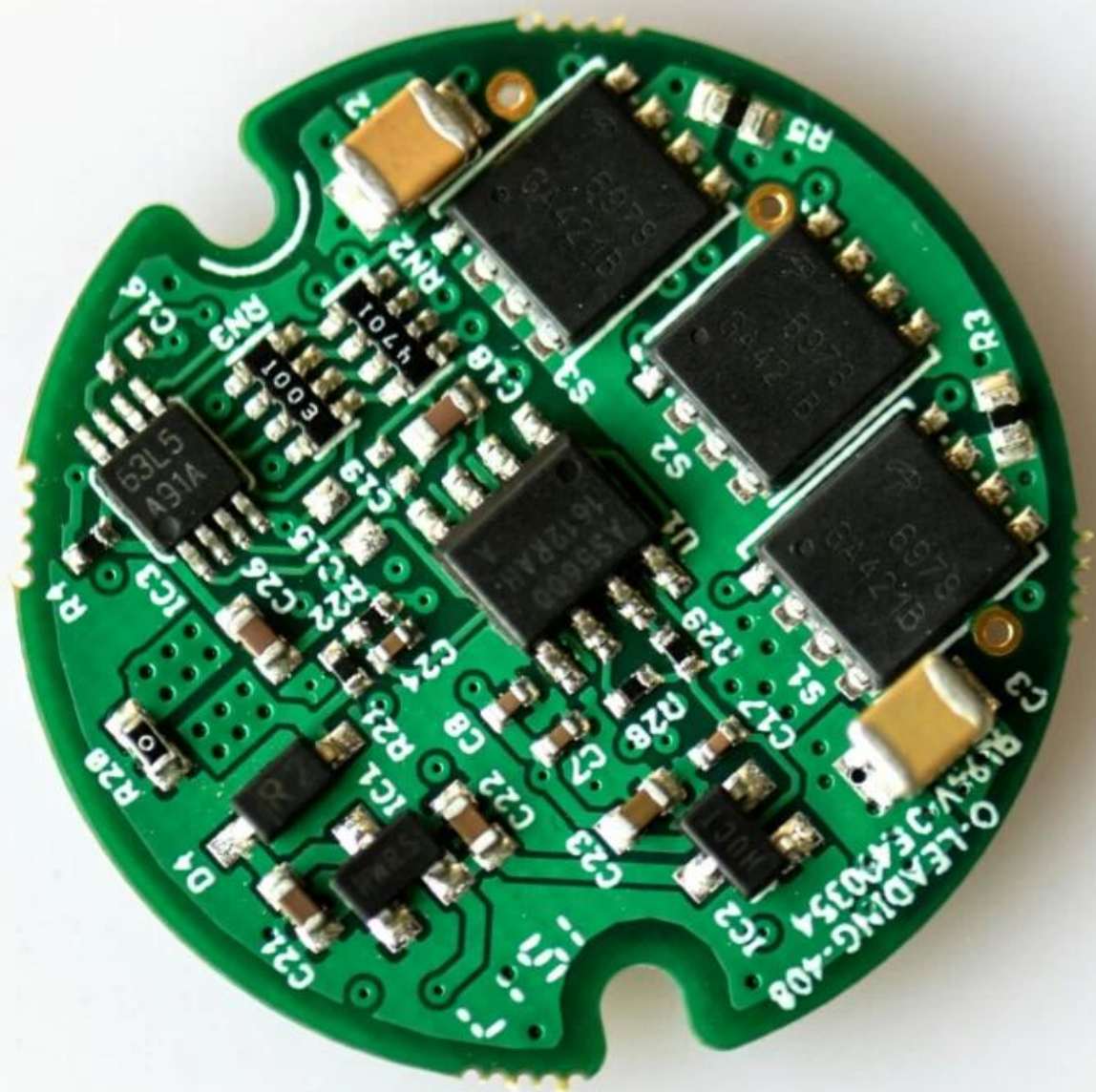
*.GBL - Bottom Layer

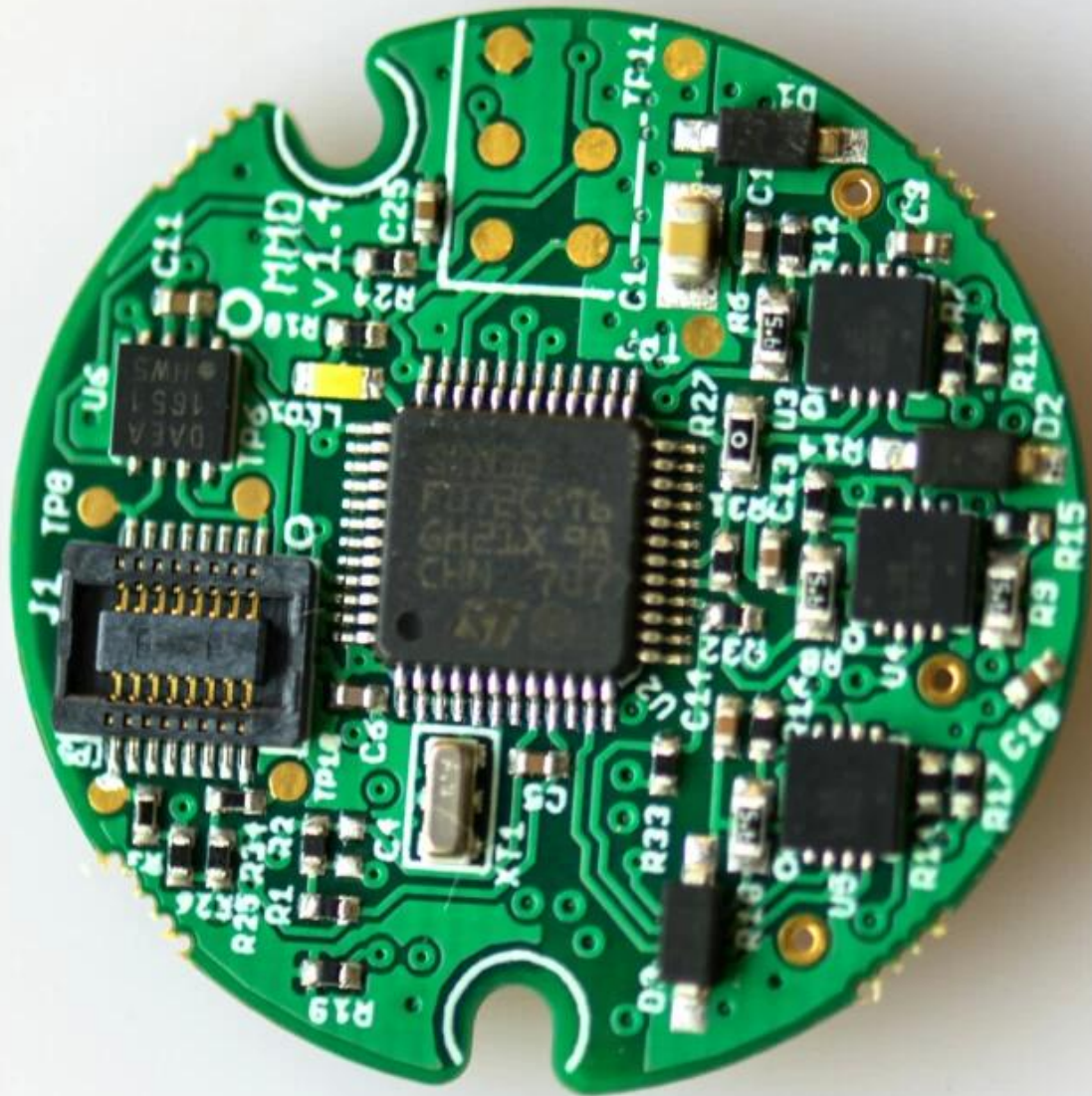
*.GBS - Bottom Soldermask

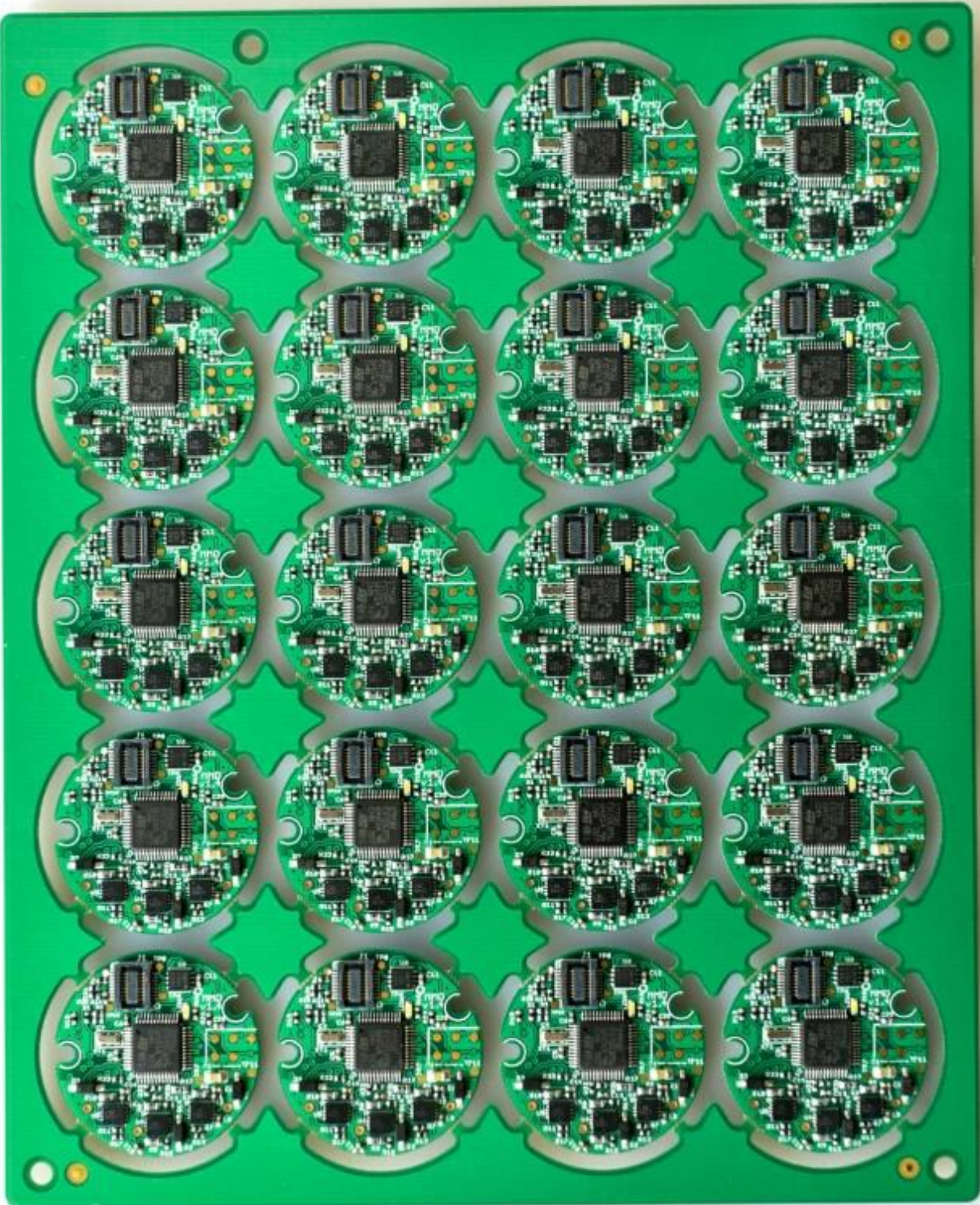
*.GBO - Bottom Silkscreen

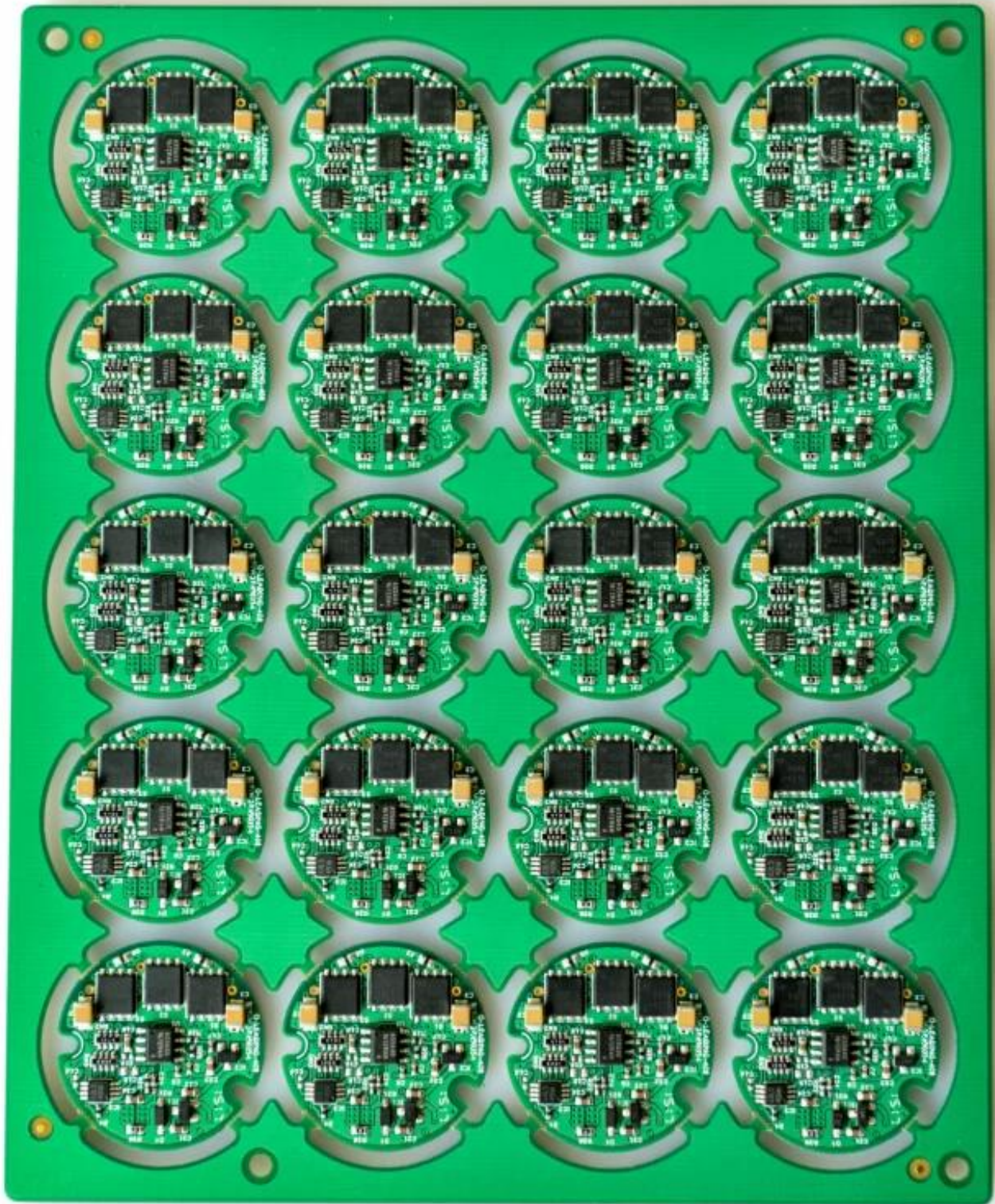
*.GBP - Bottom Solder Paste

*.GCMB - Bottom Conformal Coating Mask









[Quick turn pcb Printed circuit board, HDI pcb Printed circuit board, Printed circuit board supplier](#)