

Product Description

[Automatic Hand Sanitiser Dispenser Supplier](#), New Design 1000ml Plastic Liquid Foam Soap Dispenser Automatic Infrared Sensor Wall Mounted Hand Alcohol Gel Sanitizer Dispenser

Application: HOTEL, villa, APARTMENT, OFFICE BUILDING, HOSPITAL, school, mall, Sports venues, Leisure Facilities, supermarket, WAREHOUSE, WORKSHOP, Park, farmhouse, Courtyard

Product Name	Automatic alcohol dispenser
Material	ABS plastic
Function	Automatic Hand Sanitizer Dispenser support Alcohol Gel Foam Liquid Soap
Package	1pcs per carton
Product dimension	25*15*10cm
Power supply	Alkaline AA 1.5V battery*4pcs(not included)
Battery life	□20000 times/shot, stand by mode 2 years
Volume/shot	1.0-1.5ml/shot(liquid/gel); 0.4ml/shot(foam)
Speed/shot	0.6-0.8s/shot
Sensing distance	1cm-10cm
Volume capacity	1000ml refillable bottle(disposable bottle for choice)
Pump	Liquid/gel pump(foam pump for choice)

Product performance description

[Automatic Sanitiser Dispenser Spray Supplier](#)

1000ml Capacity Black Hand Free Infrared Liquid Soap Automatic Sanitizer Dispenser





MULTIPLE CHOICE



MULTIPLE CHOICE



MULTIPLE CHOICE



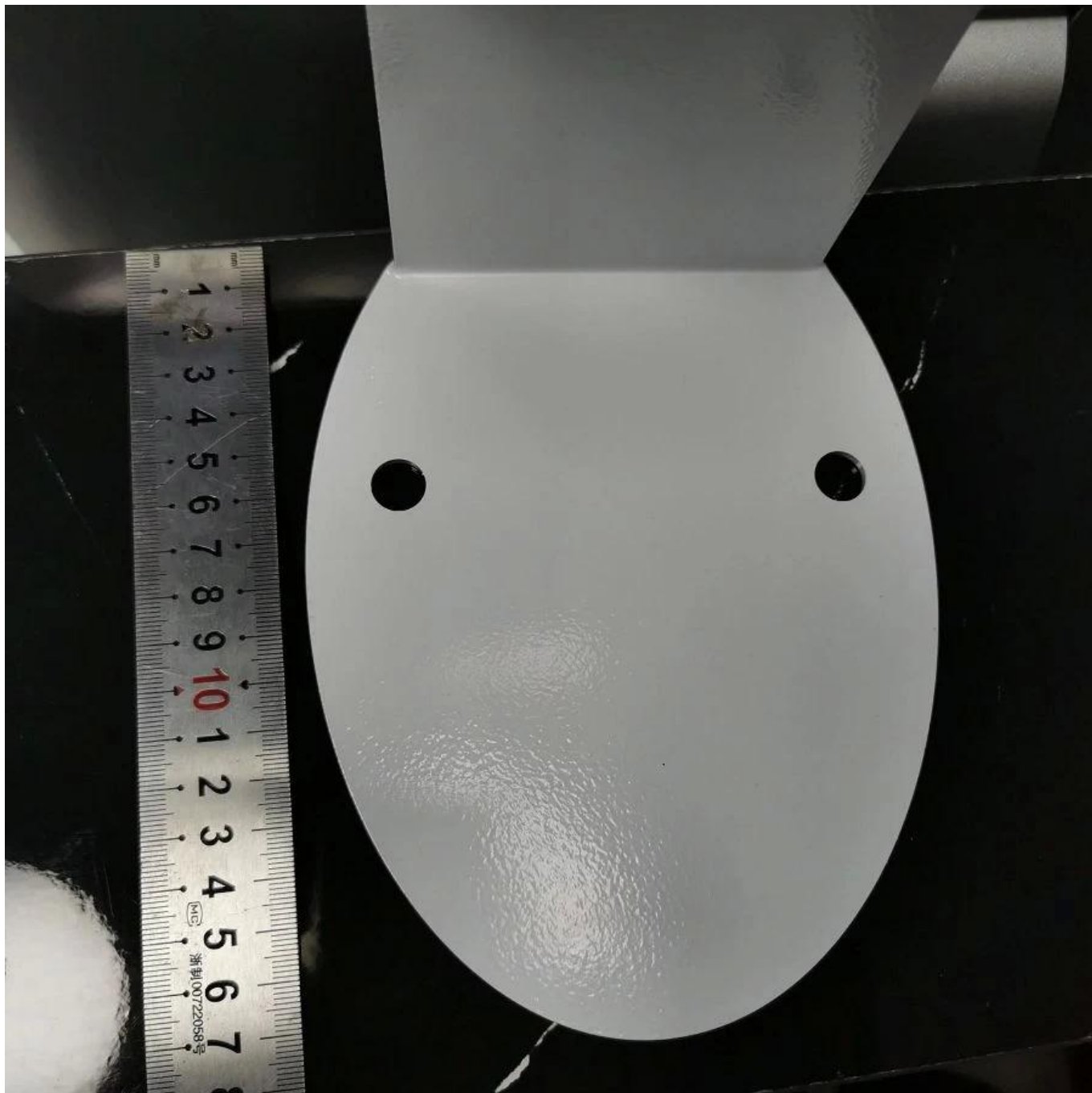
MULTIPLE CHOICE











Details Images



		
<p>Advantage I:</p> <ol style="list-style-type: none"> 1. Touch-free, infrared induction, convenient and hygienic. 2. Simple appearance, this dispenser is made of high quality ABS material, tough and durable, owning long using life span. 	<p>Advantage II:</p> <ol style="list-style-type: none"> 1. Transparent window: it allows you to clearly see the remaining liquid apacity in the dispenser, so that you can replenish the liquid in the dispenser. 2. Large capacity, the automatic dispenser has a large capacity of 1000ML, which avoids frequent replacement of the liquid in the dispenser, which is convenient to use. 	<p>Advantage III:</p> <ol style="list-style-type: none"> 1. Energy saving, 4*1.5V AA battery (not included) can use for around 1 year. 2. Screw monting and tape mounting for choice, easy to use. 3. Have CE certificate.



Refillable bottle



Disposable bottle



Liquid/Gel/Soap pump



Foam pump

Product Usage

[Touch Free Sanitiser Dispenser Supplier](#)

Use in the office

1. Touch-free, infrared induction, convenient and hygienic.
2. Simple appearance, this dispenser is made of high quality ABS material, tough and durable, owning long using life span.



Use in the bathroom

1. Transparent window: it allows you to clearly see the remaining liquid capacity in the dispenser, so that you can replenish the liquid in the dispenser.
2. Large capacity, the automatic dispenser has a large capacity of 1000ML, which avoids frequent replacement of the liquid in the dispenser, which is convenient to use.



Packing&Shipping

Packing list:

- 1*Wall-Mounted soap dispenser
- 1*Key
- 1*Sticker
- 2*Wall mounted screw sets
- 1*English user manual

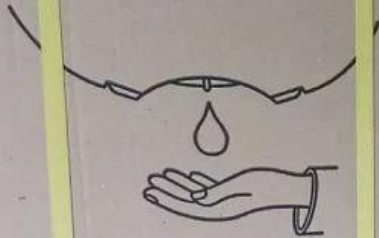
Packing dimension:

1set/box, 9.84*6.7*4.72inch, 1.87lb (25*17*12cm, 0.85kgs);
18 boxes/carton, 18.9*18.9*21.26inch, 35.27lb (48*48*54cm, 16KG).

HS code: 8509809000



Automatic Dispenser



Automatic Dispenser



Automatic Dispenser



Automatic Dispenser



Automatic Dispenser



Automatic Dispenser



Packaging & Delivery

Selling Units	Single item
Single package size	25X17X12 cm
Single gross weight	0.850 kg

FAQ

Q: How can I get the automatic soap dispenser samples to check your quality?

A: Sample order is available, can be shipped by Express, you'll receive it in 3-7 days.

Q: What can I get the price?

A: We usually quote within 24 hours after we get your inquiry. If you are very urgent to get the price, please tell us in your email so that we will regard your inquiry as priority.

Q:What is your trade term of delivery?

A: We accept EXW, FOB Shenzhen or CIF destination port. You can choose the one which is the most convenient or cost effective for you.

Q: What about the lead time for the mass production?

A: Honestly, it depends on the order quantity and the season you place the order. Sample order is within 2 days. OEM/OEM order will need extra time.