

Welcome to O-leading

We are professional PCB manufacturer with more than ten years experiences . Products range-single, double side ,multi-layer PCB ,flexible PCB and MCPCB.We can provide fast prototype service - S/S in 24hrs , 4-8layers in 48-96 working hrs production time.([China pcb manufacturers](#))

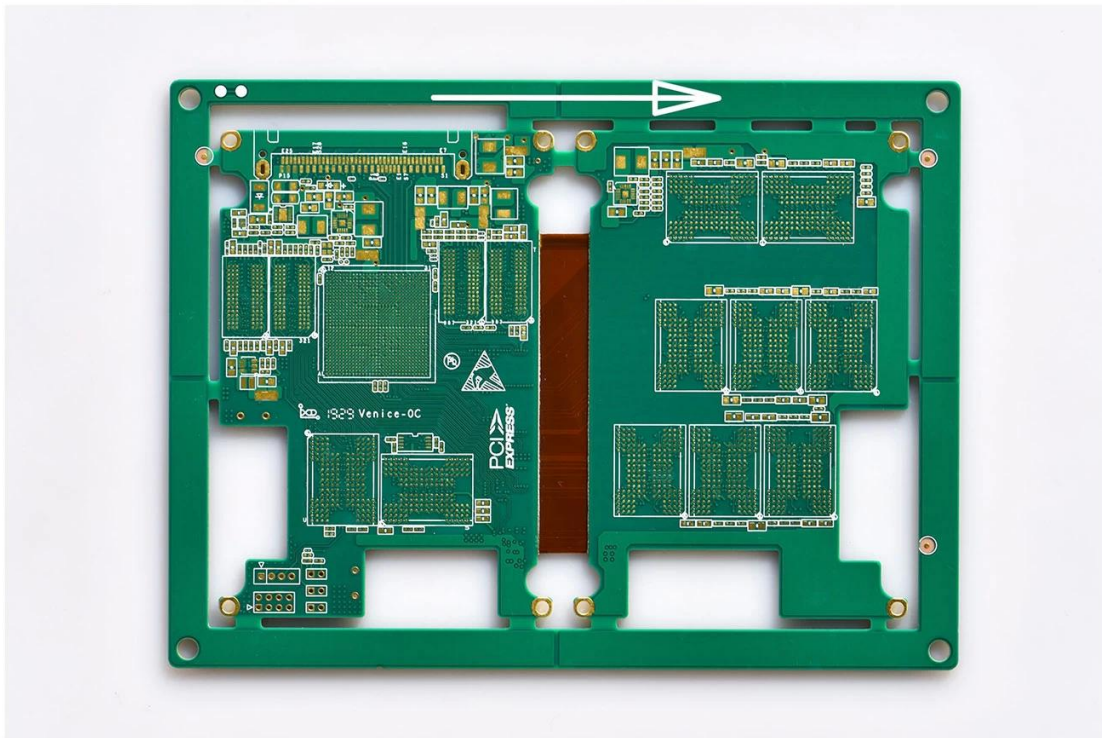
COPPER PLATE HOLES MINIMUM .025 AVG, .020 MIN.. HOLES MAY NOT BE PLUGGED
Pack with colorless transparent bubble film ,25 PCS/ bag, put desiccant in flank, put humidity indicator card on top side

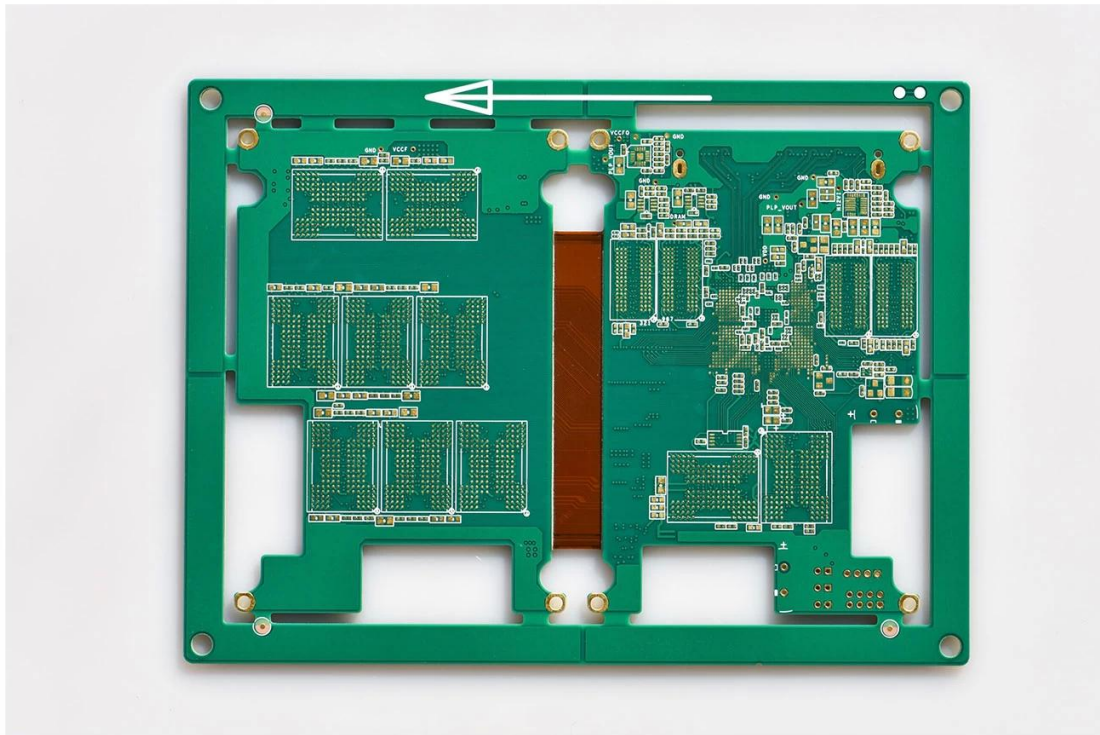
PLEASE CLICK THESE FOR MORE INFORMATION: [Halogen free pcb factory china](#)

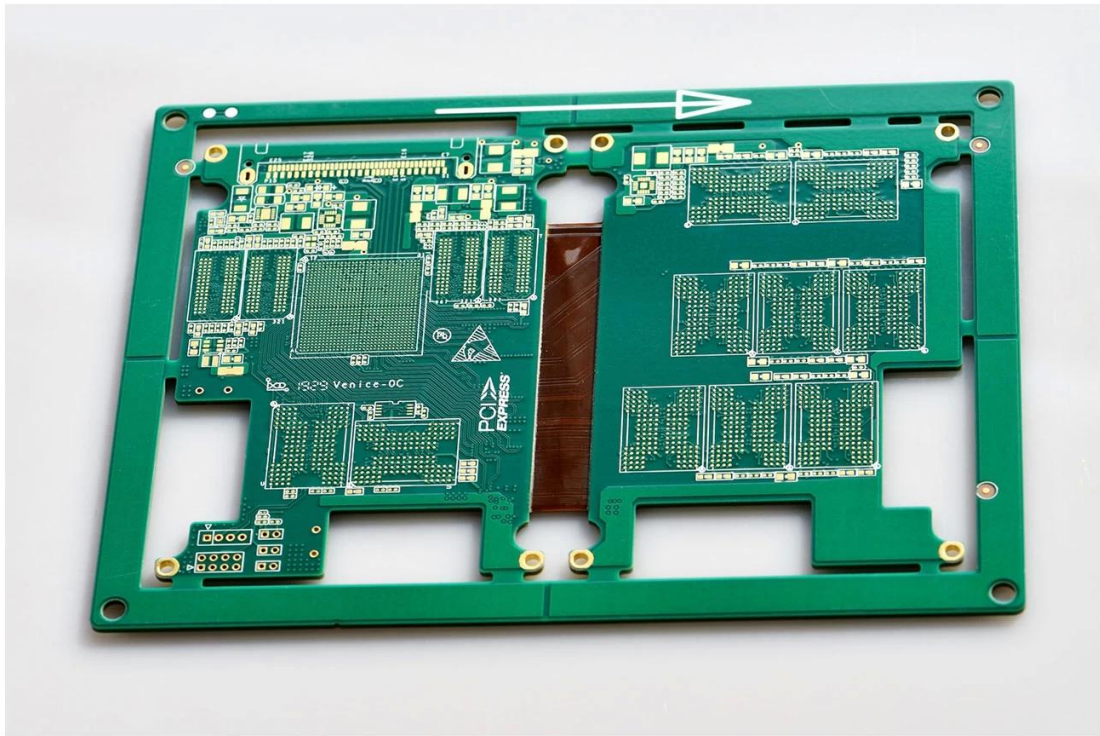
Product Description

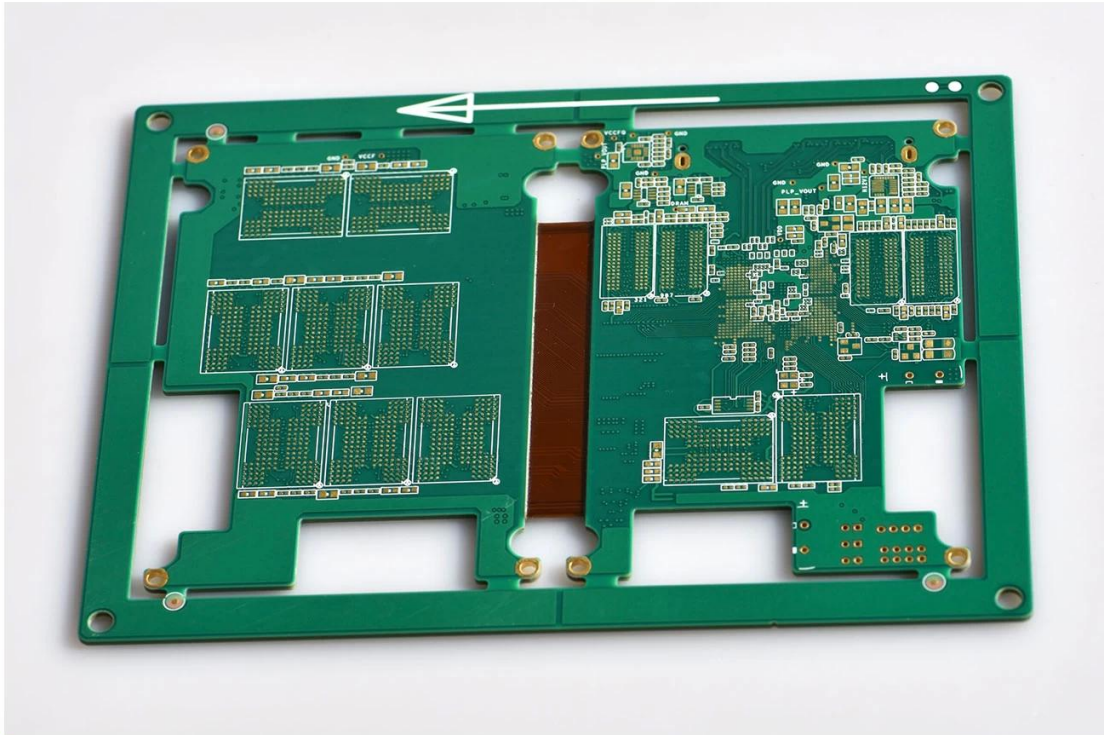
PCB P/N	EET-PCI_5823A
Layer Count	8L (L1□L2□L3□L6□L7□L8 Rigid□L4□L5 Flex)
Material	FR-4 TG170
Board thk	1.2mm
copper thk	1/H/H/H/H/H/H/1oz
Smallest hole size	0.1MM Laser drill POFV
No. of holes (pcs)	536
line w/s	3/3mil
Impedance control. Y / N (Tol %)	Y / N (Tol %):Y 50Ω□90Ω□100Ω
Surface Finishing	ENIG Au:0.05-0.127um
Solder Mask Silkscreen	Green / White
Single board size	Dim X (mm):142.00;Dim Y (mm):106.00
Panelisation	Dim X (mm):165.00;Dim Y (mm):126.00;No Of UPS:1
Special:peelable mask:	N
Routing/Punching	CNC

□









www.o-leading.com

AXI Testing supplier china

Our Team





Certifications



Abstract of the 2011 Census of India

Packaging & Delivery

Packaging Details	16 years professional OEM pcb board manufacturer
Delivery Detail	7-12days



FAQ

1. How do O-Leading ensure quality?

Our high quality standard is achieved with the following.

- 1.The process is strictly controlled under ISO 9001:2008 standards.
- 2.Extensive use of software in managing the production process
- 3.State-of-art testing equipments and tools. E.g. Flying Probe, X-ray Inspection, AOI (Automated Optical Inspector) and ICT (in-circuit testing).
- 4.Dedicated quality assurance team with failure case analysis process
- 5.Continuous staff training and education

2. How do O-Leading keep your price competitive?

Over the last decade, prices of many raw materials (e.g. copper, chemicals) had doubled, tripled or quadrupled; Chinese currency RMB had appreciated 31% over US dollar; And our labor cost also increased significantly. However, O-Leading have kept our pricing steady. This owns entirely to our innovations in reducing cost, avoiding wastes and improving efficiency. Our prices are very competitive in the industry at the same quality level.

We believe in a win-win partnership with our customers. Our partnership will be mutually beneficial if we can provide you an edge on cost and quality.

3. What kinds of boards can O-Leading process?

Common FR4, high-TG and halogen-free boards, Rogers, Arlon, Telfon, aluminum/copper-based boards, PI, etc.

4. What data are needed for PCB production?

It is best to provide data in Gerber 274-X format. In addition, Cam350, CAD, Protel 99se, PADS, DXP and Eagle can also be processed.

5. What's the typical process flow for multi-layer PCB?

Material cutting → Inner dry film → inner etching → Inner AOI → Multi-bond → Layer stack up Pressing → Drilling → PTH → Panel Plating → Outer Dry Film → Pattern Plating → Outer etching → Outer AOI → Solder Mask → Component Mark → Surface finish → Routing → E/T → Visual Inspection.