

Welcome to O-leading

We are professional PCB manufacturer with more than ten years experiences . Products range-single, double side ,multi-layer PCB ,flexible PCB and MCPCB.We can provide fast prototype service - S/S in 24hrs , 4-8layers in 48-96 working hrs production time.

[Aluminum PCB manufacturers](#)

COPPER PLATE HOLES MINIMUM .025 AVG, .020 MIN.. HOLES MAY NOT BE PLUGGED

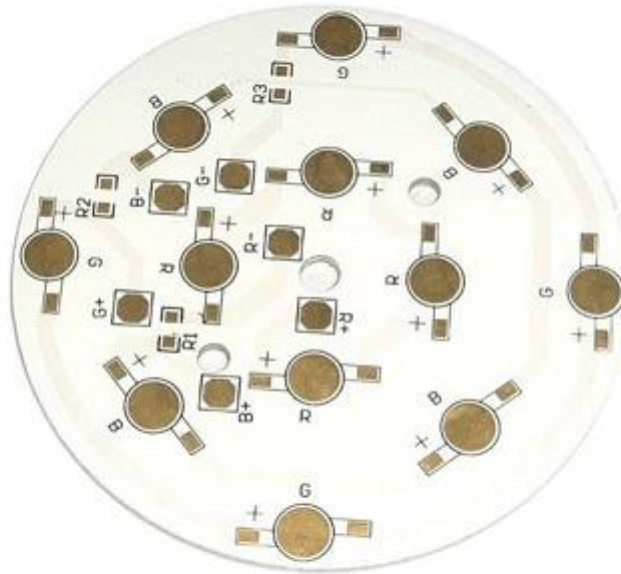
Pack with colorless transparent bubble film ,25 PCS/ bag, put desiccant in flank, put humidity indicator card on top side

PLEASE CLICK HERE FOR MORE INFORMATION [Aluminum base pcb manufacturer china](#)

Product Description

PCB P/N	LC057-V1
Layer Count	1L
Material	Base Ceramics
Board thk	1.6mm
copper thk	11oz
Smallest hole size	/
No. of holes (pcs)	/
line w/s	15mil
Impedance control. Y / N (Tol %)	N
Surface Finishing	ENIG(Au:0.05um)
Solder Mask Silkscreen	White / N/A
Single board size	Dim X (mm):89;Dim Y (mm):175
Panelisation	Dim X (mm):89;Dim Y (mm):175;No Of UPS:1
Special	N
Routing/Punching	CNC

•



www.o-leading.com

High Quality Aluminum PCB manufacturer

Our Team





Certifications





QUALITY MANAGEMENT SYSTEM CERTIFICATE

Certificate No: 16119Q10347R05

We hereby certify that
O-LEADING SUPPLY CHAIN(HK) CO.,LIMITED

Credit No: 61691591-000-07-17-2

Registration Add ROOM 603D 6/F HANG PONG COMMERCIAL BUILDING, 31 TONKIN ST. CHEUNG SHA WAN, KL, HK
Business Add 1313 Floor 13 Fortune Building, Danstui Town, Huiyang District, Huizhou, Guangdong, China

Has implemented and maintains a **Quality Management System**
Which fulfills the requirements of the following standards
GB/T19001-2016 idt ISO9001:2015

Scope of certification
Sales of printed circuit boards

Initial Issuance period: February 27, 2018
This certificate is valid during: February 27, 2018 -- February 26, 2021
This certificate is invalid without CICC qualified label in the following period

First supervision and audit	Qualified mark	Second supervision and audit	Qualified mark
-----------------------------	----------------	------------------------------	----------------

The certification registration scope does't include those product/service scopes which fail to be covered by the relevant effective administrative permissions and qualification permissions required by the state. The effectiveness of this certificate shall be evaluated by annual surveillance audit. All CICC certificates shall be valid when used together with the surveillance audit conclusion. The related information of this certification can be searched at the public website of www.cicc.com.






201726

ZPMV2.E490354 - Wiring, Printed - Component



ZPMV2.E490354
Wiring, Printed - Component

For enhanced search functionality, please visit UL's [UL Online Catalog of Databases](#). Click on a product designation for complete information.

[Page Bottom](#)

Wiring, Printed - Component

[See General Information for Wiring, Printed - Components](#)

E490354

O-LEADING SUPPLY CHAIN CO LIMITED

Fortune Building, Nanheng West Road

Room 1313

Huizhou, Guingdong 516211, CHINA

Cond Width				Min	Max		Max			
Min	Edge	Cond	SS/ Thk	DS/ Diam	Solder Limits	Dper	Temp	Flame	Meets	C
Typc	max(in)	mm(in)	mic(mil)	DS0	max(in)	C	sec	C	Class	UL796
Multi-layer (mass laminate) printed wiring boards.										
D-LEADING-403										
	0.2 (0.004)	0.3 (0.012)	34 (1.34)	D6	12.7 (0.5)	260	10	130	V-0	-
D-LEADING-407										
	0.08 (0.003)	0.2 (0.008)	17 (0.67)	D5	9.2 (0.4)	260	10	170	V-0	NI
Multi-layer printed wiring boards.										
D-LEADING-408										
	0.125 (0.005)	0.125 (0.005)	12 (0.47) ml:136	D6	50.8 (2.0)	260	20	130	V-0	NI
Single layer printed wiring boards.										
D-LEADING-002										
	0.76 (0.03)	1.14 (0.045)	34 (1.34)	S5	19.1 (0.8)	260	10	105	V-0	NI
D-LEADING-003										
	0.38 (0.015)	1.14 (0.045)	34 (1.34)	S5	19.1 (0.8)	260	10	130	V-0	NI
D-LEADING-033										
	0.15 (0.006)	0.3 (0.012)	34 (1.34)	S5	25.4 (1.0)	260	10	120	V-0	NI
D-LEADING-205										
	0.2 (0.004)	0.3 (0.012)	34 (1.34)	D6	69.6 (2.7)	260	10	130	V-0	NI
D-LEADING-206										
	0.15 (0.006)	0.33 (0.013)	17 (0.67)	D5	69.6 (2.7)	260	10	130	V-0	NI

* - CTI marking is optional and may be marked on the printed wiring board.

Marking: Company name or file number and type designation. May be followed by a suffix to denote factory identification or burning test classification. Last updated on 2017-01-27

Questions? [Print this page](#) [Terms of Use](#) [Page Top](#)

<http://www.ul.com/onlinecatalog> and <http://www.ul.com/onlinecatalog> for ZPMV2.E490354 - Wiring, Printed - Component



Test Report

No. CAVEC1805164701

Date: 03 Apr 2018

Page 2 of 6

Test Results:

Test Part Description:

Specimen No. **SGS Sample ID** **Description**
SN1 CAV18-051647.001 Green PCB*

Remarks:

- (1) 1 mg/kg = 1 ppm = 0.0001%
- (2) MDL = Method Detection Limit
- (3) ND = Not Detected (< MDL)
- (4) * = Not Regulated

RoHS Directive (EU) 2015/863 amending Annex II to Directive 2011/65/EU

Test Method: With reference to IEC 62321-4:2014+A1:2017, IEC62321-5:2013, IEC62321-7-2:2017, IEC 62321-6:2015 and IEC62321-8:2017, analyzed by ICP-OES, UV-Vis and GC-MS.

Test Item(s)	Limit	Unit	MDL	Det
Cadmium (Cd)	100	mg/kg	2	ND
Lead (Pb)	1,000	mg/kg	2	9
Mercury (Hg)	1,000	mg/kg	2	ND
Hexavalent Chromium (CrVI)	1,000	mg/kg	8	ND
Sum of PBBs	1,000	mg/kg	-	ND
Mono-brominated phenyl ether	-	mg/kg	5	ND
Dibrominated phenyl ether	-	mg/kg	5	ND
Tribrominated phenyl ether	-	mg/kg	5	ND
Tetrabrominated phenyl ether	-	mg/kg	5	ND
Pentabrominated phenyl ether	-	mg/kg	5	ND
Hexabrominated phenyl ether	-	mg/kg	5	ND
Heptabrominated phenyl ether	-	mg/kg	5	ND
Octabrominated phenyl ether	-	mg/kg	5	ND
Nonabrominated phenyl ether	-	mg/kg	5	ND
Decabrominated phenyl ether	-	mg/kg	5	ND
Sum of PBDEs	1,000	mg/kg	-	ND
Mono-brominated phenyl ether	-	mg/kg	5	ND
Dibrominated phenyl ether	-	mg/kg	5	ND
Tribrominated phenyl ether	-	mg/kg	5	ND
Tetrabrominated phenyl ether	-	mg/kg	5	ND
Pentabrominated phenyl ether	-	mg/kg	5	ND



SGS reserves all rights of writing. This document is issued by the Company subject to its General Conditions of Service which are available on its website at www.sgsgroup.com. The services provided here are for your information only and do not constitute an offer or a guarantee of any kind. The Company is not liable for any loss or damage caused by the use of the information provided here. The Company is not liable for any loss or damage caused by the use of the information provided here. The Company is not liable for any loss or damage caused by the use of the information provided here. The Company is not liable for any loss or damage caused by the use of the information provided here.

Member of the SGS Group (SGS SA)

Packaging & Delivery

Packaging Details	16 years professional OEM pcb board manufacturer
Delivery Detail	7-12days



FAQ

1. How do O-Leading ensure quality?

Our high quality standard is achieved with the following.

- 1.The process is strictly controlled under ISO 9001:2008 standards.
- 2.Extensive use of software in managing the production process
- 3.State-of-art testing equipments and tools. E.g. Flying Probe, X-ray Inspection, AOI (Automated Optical Inspector) and ICT (in-circuit testing).
- 4.Dedicated quality assurance team with failure case analysis process
- 5.Continuous staff training and education

2. How do O-Leading keep your price competitive?

Over the last decade, prices of many raw materials (e.g. copper, chemicals) had doubled, tripled or quadrupled; Chinese currency RMB had appreciated 31% over US dollar; And our labor cost also increased significantly. However, O-Leading have kept our pricing steady. This owns entirely to our innovations in reducing cost, avoiding wastes and improving efficiency. Our prices are very competitive in the industry at the same quality level.

We believe in a win-win partnership with our customers. Our partnership will be mutually beneficial if we can provide you an edge on cost and quality.

3. What kinds of boards can O-Leading process?

Common FR4, high-TG and halogen-free boards, Rogers, Arlon, Telfon, aluminum/copper-based boards, PI, etc.

4. What data are needed for PCB production?

It is best to provide data in Gerber 274-X format. In addition, Cam350, CAD, Protel 99se, PADS, DXP and Eagle can also be processed.

5. What's the typical process flow for multi-layer PCB?

Material cutting → Inner dry film → inner etching → Inner AOI → Multi-bond → Layer stack up
Pressing → Drilling → PTH → Panel Plating → Outer Dry Film → Pattern Plating → Outer etching →
Outer AOI → Solder Mask → Component Mark → Surface finish → Routing → E/T → Visual Inspection.