

COPPER PLATE HOLES MINIMUM .025 AVG, .020 MIN.. HOLES MAY NOT BE PLUGGED, [china Pcb design company](#)

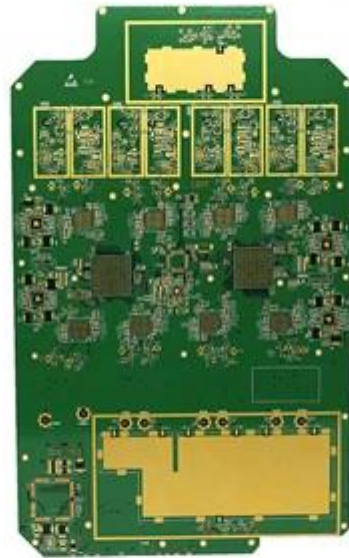
•Special requirement:ENIG, Hard gold thickness: 4UM, Impedance: Tol: +/-7%, the deviation of the impedance in the same layer must not exceed +/- 2Ohm, Back drill, Rotated 7 degree.

Pack with colorless transparent bubble film ,25 PCS/ bag, put desiccant in flank, put humidity indicator card on top side

Layer structure

Lyr	Image	Foil	Flame
COMP		0.5oz	Foil 1/2oz
			R-5670(G) 3313 RC54%
L2		0.5oz	
L3		0.5oz	R-5775(G) 0.150mm H/H 37"*49"(1080*2)(RTF)
			R-5670(G) 1078 RC68%
			R-5670(G) 1035 RC70%
L4		0.5oz	
L5		0.5oz	R-5775(G) 0.150mm H/H 37"*49"(1080*2)(RTF)
			R-5670(G) 1078 RC68%
			R-5670(G) 1035 RC70%
L6		0.5oz	
L7		0.5oz	R-5775(G) 0.150mm H/H 37"*49"(1080*2)(RTF)
			R-5670(G) 1078 RC68%
			R-5670(G) 1035 RC70%
L8		0.5oz	
L9		2oz	R-5775(G) 0.140mm H/2 37"*49"(1078*2)(RTF)
			R-5670(G) 2116 RC54%
			R-5670(G) 2116 RC54%
			R-5670(G) 2116 RC54%
L10		2oz	
L11		0.5oz	R-5775(G) 0.140mm H/2 37"*49"(1078*2)(RTF)
			R-5670(G) 1035 RC70%
			R-5670(G) 1078 RC68%
L12		0.5oz	
L13		0.5oz	R-5775(G) 0.150mm H/H 37"*49"(1080*2)(RTF)
			R-5670(G) 1035 RC70%
			R-5670(G) 1078 RC68%
L14		0.5oz	
L15		0.5oz	R-5775(G) 0.150mm H/H 37"*49"(1080*2)(RTF)
			R-5670(G) 1035 RC70%
			R-5670(G) 1078 RC68%
L16		0.5oz	
L17		0.5oz	R-5775(G) 0.150mm H/H 37"*49"(1080*2)(RTF)
			R-5670(G) 3313 RC54%
SOLD		0.5oz	Foil 1/2oz

**O-LEADING**  
To Be Reliable, To Be Valuable



[www.o-leading.com](http://www.o-leading.com)

**O-LEADING**  
To Be Reliable, To Be Valuable



[www.o-leading.com](http://www.o-leading.com)

**O-LEADING**  
To Be Reliable, To Be Valuable



[www.o-leading.com](http://www.o-leading.com)

[High quality pcb manufacturer](#)