

Welcome to O-leading

We are a professional PCB manufacturer with more than ten years of experience. Product range: single-sided, double-sided, multilayer PCB, flexible PCB and MCPCB. We can provide a rapid prototyping service: S / S in 24 hours, 4-8 units in 48-96 production hours.

MINIMUM COPPER PLATE HOLES .025 AVG, .020 MIN .. HOLES CAN NOT BE CONNECTED

Packaged with clear bubble colorless film, 25 pieces / bag, place the desiccant on the side, place the moisture indicator on top

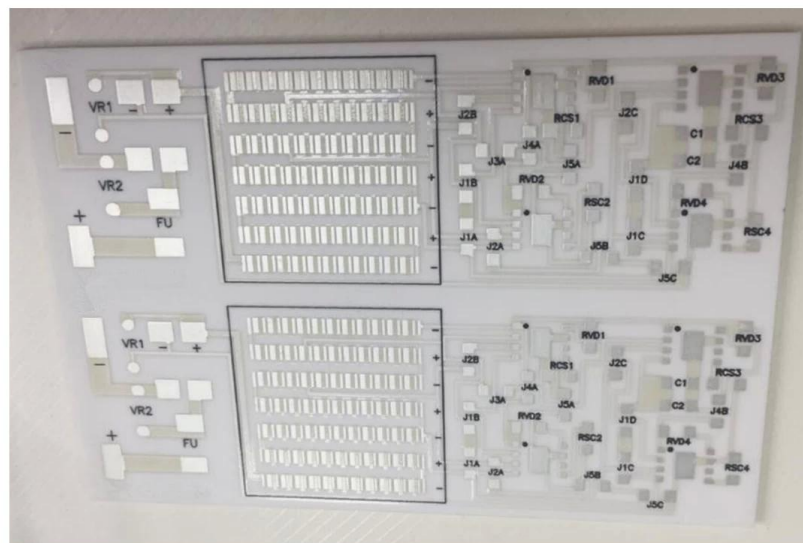
CLICK HERE FOR MORE INFORMATION : [Thick Film PCB Producer](#)

Product description

- [Ceramic printed circuit supplier](#)

PCB P / N	Q503701-A
Counting layers	2L
material	BASE ceramics
Board of directors	0.55 mm
copper thk	1/1 oz
Smallest hole size	1.6mm
Number of holes (pieces)	4
line w / s	/
Impedance check S / N (Tol%)	N
Surface finish	Electric silver
Silkscreen welding mask	green
Simple dimensions	Dim X (mm): 109; Dim Y (mm): 50
Panelisation	Dim X (mm): 109; Dim Y (mm): 50; UPS No: 1
Special: peelable mask	N
Routing / Punching	CNC

•



www.o-leading.com

Aluminum Oxide Ceramic substrate PCB China

Our team





Certifications



Packaging & delivery

Packaging details	Professional manufacturer of PCB boards for 16 years
Delivery detail	7-12days



FAQ

1. How does O-Leading guarantee quality?

Our high quality standard is obtained with the following.

1. The process is strictly controlled in accordance with ISO 9001: 2008 standards.
2. Extensive use of software in the management of the production process
3. cutting-edge test tools and tools. For example. Flying Probe, X-ray inspection, AOI (Automated Optical Inspector) and ICT (circuit test).
4. Quality assurance team specified with fault case analysis process
5. Staff training and continuous training

2. How does O-Leading maintain the competitive price?

In the last decade, the prices of many raw materials (for example, copper, chemicals) had doubled, tripled or quadrupled; The Chinese currency RMB appreciated 31% against the US dollar; And our labor costs also increased significantly. However, O-Leading has kept our prices constant. It's all about our innovations to reduce costs, avoid waste and improve efficiency. Our prices are very competitive in the industry with the same level of quality.

We believe in a partnership of mutual benefit with our customers. Our partnership will be mutually beneficial if we can offer you an advantage in terms of cost and quality.

3. What types of cards can the O-Leading process make?

FR4 common, high TG and halogen-free boards, Rogers, Arlon, Telfon, aluminum / copper plates, PI, etc.

4. What data are needed for PCB production?

It is better to provide data in the Gerber 274-X format. In addition, Cam350, CAD, Protel 99se, PADS, DXP and Eagle can also be processed.

5. What is the typical process flow for multi-layer PCB?

Cut material → inner dry film → internal engraving → internal AOI → Multi-bond → overlapping pressing layers → Drilling → PTH → Plating → external dry film → Plating → external engraving → AOI → external welding mask → COD component → Finishing surface → Routing → E / T → Visual inspection.