

# Welkom bij O-leading

O-Leading streeft ernaar uw one-stop oplossingspartner te zijn in EMS supply chain, inclusief PCB-ontwerp, PCB-fabricage en PCB-assemblage (PCBA). Wij bieden enkele van de meest geavanceerde PCB-technologie, waaronder HDI-PCB's, meerlagige PCB's, rigide flexibele PCB's . We kunnen ondersteunen van quick turn prototype tot medium & massaproductie. ([Dubbelzijdige pcb-fabrikant China](#))

Over het algemeen zijn onze wereldwijde klanten erg onder de indruk van onze diensten: snelle respons, concurrerende prijs en kwaliteitsbewustzijn. Het bieden van meer waardevolle technische service en een gehele oplossing is de weg die O-leidend is.

Met het oog op de toekomst zal O-leading zich zoals altijd concentreren op de innovatie en ontwikkeling van elektronica-productietechnologie, en zich voortdurend inspannen voor de one-stop-service van PCB & PCBA om eersteklas services te bieden en meer waarde voor onze klanten te creëren.

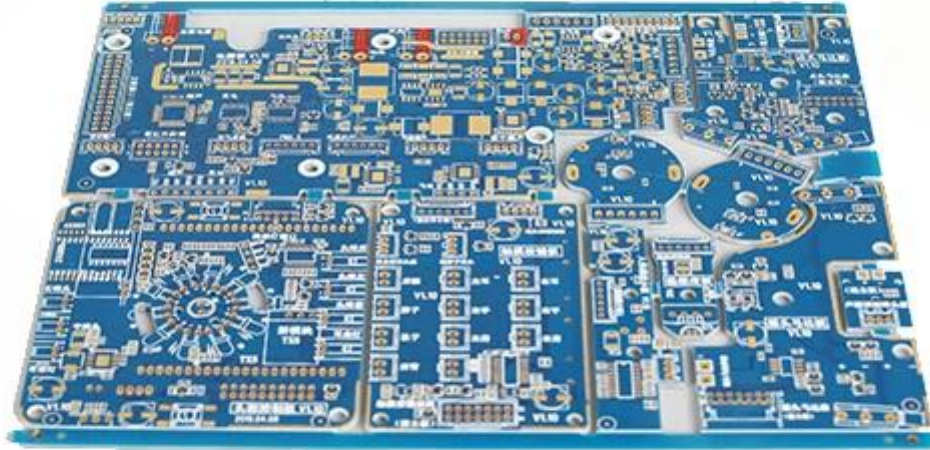
Wij zijn professionele PCB-fabrikant met meer dan tien jaar ervaringen. Producten variëren van enkelzijdige, dubbelzijdige, meerlagige PCB's, flexibele PCB's en MCPCB. We kunnen snelle prototypediensten leveren - S / S in 24 uur, 4-8 lagen in 48-96 werkuren productietijd.

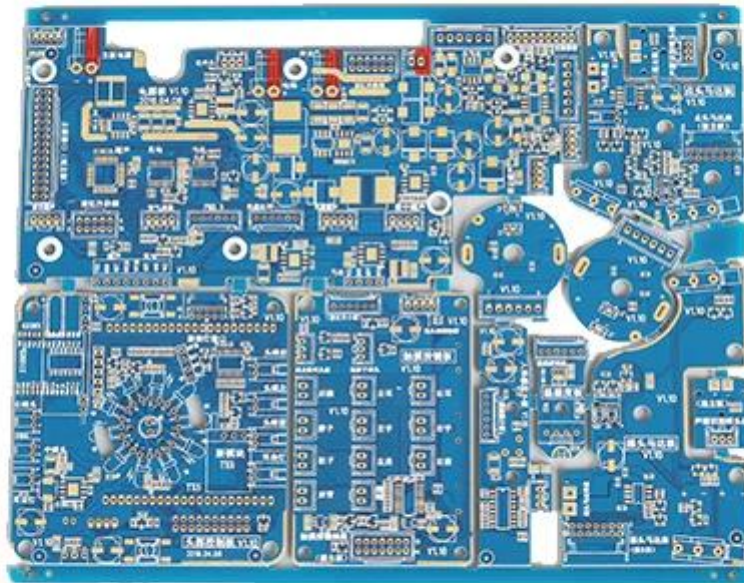
KOPEREN PLAAT GATEN MINIMUM .025 AVG, .020 MIN .. GATEN KUNNEN NIET WORDEN GEPLUGGEN, [Dubbelzijdige printplaat in China](#)

Pak met kleurloze transparante bellenfolie, 25 PCS / zak, plaats droogmiddel in flank, plaats vochtigheidsindicatiekaart op bovenkant

## Productomschrijving

|                                   |   |
|-----------------------------------|---|
| PCB onderdeelnr                   | Voeding hoofdprintplaat met blauw soldeermasker |
| Laag Count                        | 2L  |
| Material                          | FR-4 TG130                                      |
| Bestuur thk                       | 1.60mm  |
| koperen thk                       | 1 / 1oz   |
| Kleinste gat maate                | 0.30mm  |
| Aantal gaten (stuks)              | 879   |
| regel w / s                       | 8 / 7mil  |
| Impedantie controle. J / N (Tol%) | N   |
| Oppervlakteafwerking              | ENIG Au: 0,05-0,10UM                            |
| Soldeermasker Zeefdruk            | Blauw Wit                                       |
| Enkel bord formaat                | Dim X (mm): 139; Afm Y (mm): 75                 |
| Panelisation                      | Dim X (mm): 139; Dim Y (mm): 85; Geen UPS: 1    |
| Speciaal: afpelbaar masker        | N   |
| Routing / Ponsen                  | CNC   |





[www.o-leading.com](http://www.o-leading.com)

- [Dubbelzijdige pcb-leverancier](#)

Ons team



---

Factory PCB

---



Automatic vacuum press machine



Drilling Machine



Pattern Plating Machine



Scrubbing Machine



Developing Machine



Routing Machine



High-speed flying probe machine



E-test Machine

---

Factory SMT

---



# Certificaten

CICC INSPECTION CERTIFICATION



**嘉泰认证**

**QUALITY MANAGEMENT SYSTEM CERTIFICATE**  
Certificate No: 18118Q10347R05

**We hereby certify that**  
**O-LEADING SUPPLY CHAIN(HK) CO.,LIMITED**  
Credit No: 61691591-000-07-18-7  
Registration Add: FLAT/RM 1205 12/F TAI SANG BANK BUILDING 130-132 DES VODEUS ROAD CENTRAL HK  
Business Add: 1213, Floor 13, Fortune Building, Danshui Town, Huiyang District, Huizhou, Guangdong, China

Has implemented and maintains a **Quality Management System** Which fulfills the requirements of the following standards  
GB/T19001-2016 idt ISO9001:2015

**Scope of certification**  
Sales of printed circuit boards

Initial issuance period: February 27, 2018  
Renewal date: April 22, 2019  
This certificate is valid during: April 22, 2019 – February 26, 2021  
This certificate is invalid without CICC qualified label in the following period

|                             |                              |                |
|-----------------------------|------------------------------|----------------|
| First supervision and audit | Second supervision and audit | Qualified mark |
|-----------------------------|------------------------------|----------------|

The certification registration number does not include those production stages which fail to be covered by the relevant effective administrative procedures and qualification procedures stipulated by the state. The effectiveness of this certificate shall be restricted to those activities which are covered by the certification. The actual information of this certification can be searched on the internet of CICC www.cicc.com.cn. For the sake of clarity see also the logo.






CICC INSPECTION CERTIFICATION



**嘉泰认证**

**质量管理体系认证证书**  
证书号: 18118Q10347R05

**兹证明**  
**诚领供应链（香港）有限公司**  
统一社会信用代码: 61691591-000-07-18-7  
注册地址: 香港中環德輔道中130-132號大生銀行大廈1205室  
经营地址: 广东惠州惠阳淡水南亨西路财富大厦13楼1313

**建立的质量管理体系符合**  
GB/T19001-2016 idt ISO9001:2015 质量标准适用条款的要求

**认证范围**  
印刷线路板的销售

初次获证日期: 2018年02月27日  
换证日期: 2019年04月22日  
证书有效期: 自2019年04月22日至2021年02月26日  
在下列期限内, 未经CICC黏贴合格标贴, 本证书无效

|       |       |     |
|-------|-------|-----|
| 第一次监督 | 第二次监督 | 黏贴处 |
|-------|-------|-----|

本证书认证范围不包括未取得有效的国家规定的行政许可、资质许可的产品/服务范围; 本证书通过CICC定期监督审核保持, 与年度《保持认证通知书》共同方为有效; 本证书信息可在国家认监委网站: www.cca.gov.cn及CICC网站www.cicc.com.cn查询。










## ZPMV2.E490354 - WIRING, PRINTED - COMPONENT

## Wiring, Printed - Component

See General Information for Wiring, Printed - Component

**O-LEADING SUPPLY CHAIN (HK) CO LTD**

E490354

ROOM 1205, 12/F  
TAI SANG BANK BLDG  
130-132 DES VOEUS ROAD  
CENTRAL, HONG KONG

| Type   | Cond Width    |               | Cond Thk<br>mic(mil) | SS/<br>DS/<br>DSO | Max            | Max         |             | Meets      | C            | I   |       |
|--|---------------|---------------|----------------------|-------------------|----------------|-------------|-------------|------------|--------------|-----|-------|
|  | Min           | Edge          |                      |                   | Area           | Solder      | Oper        |            |              |     | Flame |
|  | mm(in)        | mm(in)        |                      |                   | Diam<br>mm(in) | Limits<br>C | Temp<br>sec | Class<br>C | UL796<br>DSR | T   |       |
| <b>Multilayer (mass laminate) printed wiring boards.</b> |               |               |                      |                   |                |             |             |            |              |     |       |
| <b>O-LEADING-401</b>                                     | 0.1 (0.004)   | 0.3 (0.012)   | 34 (1.34)            | DS                | 12.7 (0.5)     | 260         | 10          | 130        | V-0          | -   | -     |
| <b>O-LEADING-407</b>                                     | 0.08 (0.003)  | 0.2 (0.008)   | 17 (0.67)            | DS                | 9.7 (0.4)      | 260         | 10          | 130        | V-0          | All | -     |
| <b>Multilayer printed wiring boards.</b>                 |               |               |                      |                   |                |             |             |            |              |     |       |
| <b>O-LEADING-408</b>                                     | 0.125 (0.005) | 0.125 (0.005) | 12 (0.47)<br>Int:136 | DS                | 50.8 (2.0)     | 280         | 20          | 130        | V-0          | All | *     |
| <b>Single layer printed wiring boards.</b>               |               |               |                      |                   |                |             |             |            |              |     |       |
| <b>O-LEADING-002</b>                                     | 0.38 (0.015)  | 1.14 (0.045)  | 34 (1.34)            | SS                | 19.1 (0.8)     | 260         | 10          | 105        | V-0          | All | -     |
| <b>O-LEADING-003</b>                                     | 0.38 (0.015)  | 1.14 (0.045)  | 34 (1.34)            | SS                | 19.1 (0.8)     | 260         | 10          | 130        | V-0          | ▲   | -     |
| <b>O-LEADING-033</b>                                     | 0.15 (0.006)  | 0.3 (0.012)   | 34 (1.34)            | SS                | 25.4 (1.0)     | 260         | 10          | 120        | V-0          | All | -     |
| <b>O-LEADING-205</b>                                     | 0.1 (0.004)   | 0.3 (0.012)   | 34 (1.34)            | DS                | 69.6 (2.7)     | 260         | 10          | 130        | V-0          | All | -     |
| <b>O-LEADING-206</b>                                     | 0.15 (0.006)  | 0.33 (0.013)  | 17 (0.67)            | DS                | 69.6 (2.7)     | 260         | 10          | 130        | V-0          | All | -     |
| <b>O-LEADING-D01</b>                                     | 0.14 (0.006)  | 0.15 (0.006)  | 33 (1.30)            | DS                | 25.4 (1.0)     | 260         | 10          | 130        | V-0          | All | *     |
| <b>O-LEADING-S01</b>                                     | 0.25 (0.010)  | 0.25 (0.010)  | 17 (0.67)            | SS                | 25.4 (1.0)     | 260         | 4           | 130        | V-0          | All | *     |

## WIRING, PRINTED - COMPONENT | UL Product iQ

|                      |              |              |           |    |            |     |   |     |     |     |   |
|----------------------|--------------|--------------|-----------|----|------------|-----|---|-----|-----|-----|---|
| <b>O-LEADING-S02</b> | 0.2 (0.008)  | 0.2 (0.008)  | 17 (0.67) | SS | 25.4 (1.0) | 260 | 4 | 130 | HB  | ▲   | * |
| <b>O-LEADING-S03</b> | 0.25 (0.010) | 0.25 (0.010) | 34 (1.34) | SS | 25.4 (1.0) | 260 | 4 | 130 | V-0 | All | * |

\* - CTI marking is optional and may be marked on the printed wiring board.

Marking: Company name or file number and type designation. May be followed by a suffix to denote factory identification or burning test classification.

并不是所有出现在本数据库中的公司名称和产品都满足了UL跟踪检验服务的要求。只有带有UL标志的产品，才应该被视为经过UL认证，并满足UL跟踪检验服务的要求。注意查看产品上的标志。

UL 允许在线认证目录中所含材料的复制遵循以下条件：1.指南信息、装配、构造、设计、系统和/或认证（文件）必须在不篡改任何数据（或图纸）的情况下完整且无误导性地呈现。2.经 UL 允许从在线认证目录转载“声明必须出现在所摘录材料的邻近位置。此外，转载材料必须包含以下格式的版权声明：“© 2019 UL LLC”



# Verpakking & Levering

## Shipping service



| Quick Turn Lead Time |          |                     |
|----------------------|----------|---------------------|
| Layer Count:         | Lead Tim | Special Requirement |
| 1L/2L                | 2-3days  | 24 Hours,48 Hours   |
| 4L                   | 3-4days  | 48 Hours            |
| 6L                   | 4-5days  | 72 Hours            |
| 8L                   | 5-6days  | NA                  |
| 10L                  | 6-7days  | NA                  |
| 12L                  | 7-8days  | NA                  |
| 14L                  | 8-9days  | NA                  |

| Standard Lead Time |                  |                        |
|--------------------|------------------|------------------------|
| Layer Count:       | Sample Lead Time | Volume order lead time |
| 2L                 | 4 days           | 10 days                |
| 4L                 | 5 days           | 11 days                |
| 6L                 | 6 days           | 12 days                |
| 8L                 | 8 days           | 14 days                |
| 10L                | 10 days          | 16 days                |
| 12L                | 12 days          | 18 days                |
| 14L                | 14 days          | 20 days                |
| 16-32L             | 18 days          | 24 days                |

## Proces capaciteit

### PCB-productiemogelijkheden

Aantal lagen: 1 laag-32 lagen

Afgewerkte koperdikte □ 1 / 3oz-12oz

Min Lijnbreedte / afstand intern □ 3.0mil / 3.0mil

Min Lijnbreedte / afstand extern: 4,0mil / 4,0mil

Max. Beeldverhouding: 10: 1

Plaatdikte □ 0,2 mm - 5,0 mm

Max. Paneelgrootte (inches): 635 \* 1500 mm

Minimale boorgatgrootte: 4mil

Plated Hole Tolerance: +/- 3mil

Blind / Buried Vias (All-typen): JA

Via vulling (geleidend, niet-geleidend): JA

Basismateriaal: FR-4, FR-4hoge Tg. Halogeenvrij materiaal, Rogers, aluminium basis,polyimide,  
Zwaar koper

Oppervlakteafwerkingen: HASL, OSP, ENIG, HAL-LF, Immersion silver,Immersietin, gouden vingers, koolstofinkt

## **SMT-productiecapaciteiten**

PCB-materiaal: FR-4, CEM-1, CEM-3, op aluminium gebaseerde plaat

Maximale printgrootte: 510x460 mm

Min. Printgrootte □ 50x50mm

PCB-dikte □ 0,5 mm - 4,5 mm

Plaatdikte □ 0,5-4 mm

Min. Componentgrootte: 0201

Standaard chipformaat component: 0603 en groter

Component max hoogte □ 15 mm

Min loodsteek: 0,3 mm

Min BGA-balafstand: 0,4 mm

Plaatsingsnauwkeurigheid: +/- 0,03 mm