

O-leading 0.2mm 0.2mm 0.2mm.

0.2mm 10mm 0.2mm 0.2mm PCB 0.2mm. 0.2mm - 0.2mm, 0.2mm, 0.2mm PCB, 0.2mm PCB 0.2mm MCPCB. 0.2mm 0.2mm 0.2mm 0.2mm 0.2mm 0.2mm - 24mm S / S, 48-96mm 0.2mm 4-8mm.

0.2mm 0.2mm 0.2mm .025 AVG, .020 MIN .. 0.2mm 0.2mm 0.2mm 0.2mm

0.2mm 0.2mm 0.2mm, 25 PC / bag, 0.2mm 0.2mm 0.2mm, 0.2mm 0.2mm 0.2mm 0.2mm

0.2mm 0.2mm

0.2mm 0.2mm 0.2mm

0.2mm:	0.2mm, 0.2mm (0.2mm)	0.2mm:	0.2mm - 0.2mm
0.2mm 0.2mm :	FR-4, 0.2mm	0.2mm 0.2mm :	0.5oz ~ 5oz
0.2mm. 0.2mm 0.2mm :	0.2mm	0.2mm. 0.2mm :	0.2mm
0.2mm 0.2mm :	0.2mm, OSP, 0.2mm HASL	0.2mm 0.2mm	0.1-5mm
0.2mm 0.2mm :	LED, 0.2mm, 0.2mm, 0.2mm	0.2mm:	0.2mm 0.2mm PCB
0.2mm :	ISO9001, UL, RoHS, SGS	Q / CTN :	10PCS-100PCS
0.2mm:	0.01kg ~ 5kg	MOQ :	10mm
0.2mm	0.2mm, 0.2mm, 0.2mm, 0.2mm .yellow	0.2mm	\$ 0.1- \$ 10
0.2mm 0.2mm	0.2mm 0.2mm pcb 0.2mm 0.2mm pcba 0.2mm 0.2mm	0.2mm	0.01m3-10m3
0.2mm	0.2mm 0.2mm 0.2mm	0.2mm. 0.2mm	0.2mm

0.2mm & 0.2mm

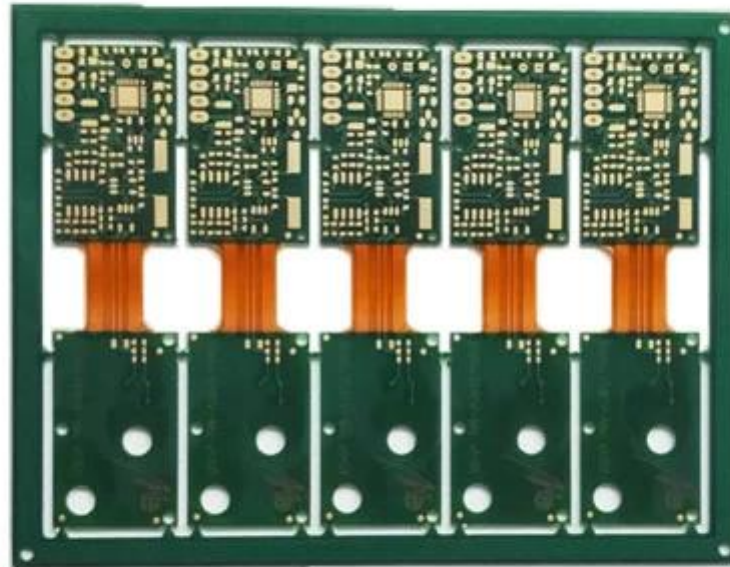
0.2mm 0.2mm 0.2mm :	16mm 0.2mm OEM pcb 0.2mm 0.2mm 0.2mm
0.2mm 0.2mm 0.2mm :	7-12mm

0.2mm 0.2mm

16mm 0.2mm OEM pcb 0.2mm 0.2mm

0.2mm	2014		2015 ~ 2016		2017 ~ 2018	
	0.2mm	0.2mm	0.2mm	0.2mm	0.2mm	0.2mm
0.2mm 0.2mm	32	42	38mm	44	42	48
0.2mm 0.2mm / 0.2mm (µm)	50/50	40/45	40/45	40/40	35/40	35/35
0.2mm 0.2mm 0.2mm (mm)	0.15	0.10	0.15	0.10	0.15	0.10
0.2mm PTH	14 : 1	16 : 1	16 : 1	18 : 1	18 : 1	20 : 1

N + C + N	4 + C + 4	5 + C + 5	5 + C + 5	6 + C + 6	5 + C + 5	6 + C + 6
□□ □□ □□ □□	5 + 2 + 5	6 + 2 + 6	5 + 2 + 5	6 + 2 + 6	5 + 2 + 5	6 + 2 + 6
□□□ □□□ □	□	-	□	-	□	-
□□. □□ □□ (□□ □□) (μm)	50	40	40	30	40	30
□□. □□□ □□ □□ (μm)	75	65	65	50	50	40
□□ □ □□ □□ □ / □□ □□	□	-	□	-	□	-
□□	FR4, Megtron, Nelco, Rogers, Heavy Copper □					
□□□□ □□□□ PCB	□	-	□	-	□	-
□□ □□	□□ HASL, ENIG, OSP, □□□, □□ □□, □□□ □, □ □□□ □□, □□□ □ □□, □□ □ □□ □□□, □□ □□					



www.o-leading.com

[HDI pcb 0.1mm 0.2mm](#), [Quick turn pcb 0.1mm 0.2mm](#)









CICC INSPECTION CERTIFICATION

QUALITY MANAGEMENT SYSTEM CERTIFICATE

Certificate No.: 16118Q10347R05

We hereby certify that

O-LEADING SUPPLY CHAIN(HK) CO.,LIMITED

Credit No.: 61691591-000-07-17-2

Registration Add: ROOM 603D 6/F HANG PONT COMMERCIAL BUILDING,31 TONKIN ST,CHEUNG SHA WAN,KL, HK

Business Add:1313 Floor 13,Fortune Building,Danshui Town,Huiyang District, Huizhou, Guangdong,China

Has implemented and maintains a **Quality Management System** Which fulfills the requirements of the following standards
GB/T19001-2016 idt ISO9001:2015

Scope of certification
Sales of printed circuit boards

Initial Issuance period: February 27, 2018
This certificate is valid during: February 27, 2018 -- February 26, 2021
This certificate is invalid without CICC qualified label in the following period

First supervision and audit	Qualified mark	Second supervision and audit	Qualified mark
-----------------------------	----------------	------------------------------	----------------

The certification registration scope does not include those products/services scope which fail to be covered by the relevant effective administration permission and qualification permission required by the state. The effectiveness of this certificate shall be evidenced by annual surveillance audit of CICC. The certificate shall be valid also used together with the surveillance audit conclusion. The relevant information of this certification can be searched at the portal of the site of company www.cicc.com.cn.

CICC CERTIFICATION

IAF

CNAS

ZPMV2.E490354
Wiring, Printed - Component

For enhanced search functionality, please visit ul.com Family of Databases. Click on a product designation for complete information.

[Page Back](#)

Wiring, Printed - Component

[See General Information for Wiring, Printed - Components](#)

O-LEADING SUPPLY CHAIN CO LIMITED E490354

Fortune Building, Nanheng West Road
Room 1313
Huizhou, Guangdong 516211, CHINA

	Cond Width				SS/ DS/ Diam	Area	Solder Limits	Dper	Temp	Flame	RoHS	C
	Min	Edge	Cond	Thk								
Typ	max(in)	mm(in)	mic(mil)	DSO	mm(in)	C	sec	C	Class	DSR	I	
Hull-layer (mass laminate) printed wiring boards.												
O-LEADING-001												
	0.2 (0.004)	0.3 (0.012)	34 (1.34)	D6	12.7 (0.5)	260	10	130	V-0	-	-	-
O-LEADING-002												
	0.08 (0.003)	0.2 (0.008)	17 (0.67)	D5	9.2 (0.4)	260	10	130	V-0	NI	-	-
Hull-layer printed wiring boards.												
O-LEADING-008												
	0.125 (0.005)	0.125 (0.005)	12 (0.47) mil-135	D6	50.8 (2.0)	260	20	130	V-0	NI	-	-
Single layer printed wiring boards.												
O-LEADING-002												
	0.76 (0.03)	1.14 (0.045)	34 (1.34)	D5	19.1 (0.8)	260	10	105	V-0	NI	-	-
O-LEADING-003												
	0.38 (0.015)	1.14 (0.045)	34 (1.34)	D5	19.1 (0.8)	260	10	130	V-0	▲	-	-
O-LEADING-003												
	0.15 (0.006)	0.3 (0.012)	34 (1.34)	D5	25.4 (1.0)	260	10	120	V-0	NI	-	-
O-LEADING-205												
	0.1 (0.004)	0.3 (0.012)	34 (1.34)	D6	69.6 (2.7)	260	10	130	V-0	NI	-	-
O-LEADING-206												
	0.15 (0.006)	0.33 (0.013)	17 (0.67)	D5	69.6 (2.7)	260	10	130	V-0	NI	-	-

* - CTI marking is optional and may be marked on the printed wiring board.

Marking: Company name or file number and type designation. May be followed by a suffix to denote factory identification or burning test classification.
Last updated on 2017-01-27

Questions? [Print this page](#) [Terms of Use](#) [Page Top](#)



Test Report

No. CANEC1805164701

Date: 03 Apr 2018

Page 2 of 8

Test Results:

Test Part Description:

Specimen No.	SGS Sample ID	Description
SN1	CAN18-051647.001	Green "PCB"

Remarks:

- (1) 1 mg/kg = 1 ppm = 0.0001%
- (2) MDL = Method Detection Limit
- (3) ND = Not Detected (< MDL)
- (4) "*" = Not Regulated

RoHS Directive (EU) 2015/863 amending Annex II to Directive 2011/65/EU

Test Method: With reference to IEC 62321-4:2014+A1:2017, IEC62321-5:2013, IEC62321-7-2:2017, IEC 62321-6:2015 and IEC62321-8:2017, analyzed by ICP-OES, UV-Vis and GC-MS.

Test Item(s)	Limit	Unit	MDL	Det
Cadmium (Cd)	100	mg/kg	2	ND
Lead (Pb)	1,000	mg/kg	2	9
Mercury (Hg)	1,000	mg/kg	2	ND
Hexavalent Chromium (CrVI)	1,000	mg/kg	8	ND
Sum of PBBs	1,000	mg/kg	-	ND
Monobromobiphenyl	-	mg/kg	5	ND
Dibromobiphenyl	-	mg/kg	5	ND
Tribromobiphenyl	-	mg/kg	5	ND
Tetrabromobiphenyl	-	mg/kg	5	ND
Pentabromobiphenyl	-	mg/kg	5	ND
Hexabromobiphenyl	-	mg/kg	5	ND
Heptabromobiphenyl	-	mg/kg	5	ND
Octabromobiphenyl	-	mg/kg	5	ND
Nonabromobiphenyl	-	mg/kg	5	ND
Decabromobiphenyl	-	mg/kg	5	ND
Sum of PBDEs	1,000	mg/kg	-	ND
Monobromodiphenyl ether	-	mg/kg	5	ND
Dibromodiphenyl ether	-	mg/kg	5	ND
Tribromodiphenyl ether	-	mg/kg	5	ND
Tetrabromodiphenyl ether	-	mg/kg	5	ND
Pentabromodiphenyl ether	-	mg/kg	5	ND



Before affixing approval or testing, this document is issued by the Company subject to its General Conditions of Service printed on separate sheets and is valid only as reference to the relevant data sheets of the Company's publications which are for customers' use only. The Company shall not be liable for any loss or damage arising from the use of the information provided herein. The Company's publications are subject to change without notice. The Company shall not be held responsible for any error or omission in this document. This document cannot be reproduced or transmitted in any form or by any means electronic or mechanical, including photocopying, recording, or by any information storage and retrieval system, without the prior written permission of the Company. Copyright © 2015 SGS. All rights reserved. For more information, please contact your SGS representative.

SGS GROUP
SGS Testing Services Ltd.
Canton Road, Tsimshatsui, Kowloon, HONG KONG
TEL: 852 2380 9328 FAX: 852 2380 9330
SGS (China) Service and Technology Co., Ltd.
3000 East Road, Guangzhou, Guangdong, P.R. China
TEL: 86 20 3765 1188 FAX: 86 20 3765 1189
SGS (UK) Service and Technology Co., Ltd.
100 Brooklands Drive, Woking, Surrey GU24 0NF, UK
TEL: 44 1483 520000 FAX: 44 1483 520001

Member of the SGS Group (SGL) SA

□□ & □□

□□ □□ □□	16 □ □□ OEM pcb □□ □□ □□
□□ □□ □□	7-12 □



□□□□ □□

1. O-Leading□ □□□ □□□□□□?

□□□□ □□□□ □□□□ □□ □□□□□□.

1. □ □□□□□ ISO 9001 : 2008 □□□□ □□ □□ □□□□□□.
2. □□ □□ □□□□□□ □□□□□□ □□□□ □□
3. State-of-art □□□□ □□ □ □□□. □ : □□□□ □□□□, X □ □□□, AOI (□□□□ □□ □□□□) □ ICT (□□□□ □□□□).
4. □□ □□ □□ □□□□□□ □□ □ □□□ □□ □□ □□
5. □□□□ □□ □□ □ □□□

2. O-Leading□ □□ □□□□ □□□□□□?

□□ 10 □ □□ □□ □□□□ (□ : □□□□, □□ □□□□) □□□□ □□ □□, □ □ □□ □ □ □□□□□□□□. □□ □□ □□□□ □□ □□ 31 % □□□□ □□□□. □□ □□□□ □□ □□□□□□□□. □□□□ O-Leading□ □□□□ □□□□□□□□□□□□□□□□. □□ □□ □□□□, □□□□ □□ □ □□□ □□□□ □□ □□□□ □□ □□□□ □□ □□□□□□. □ □□□ □□□□ □□□□ □□□□ □□ □□□□ □□ □□□□ □□□□□□□□□□. □□□□ □□□□ □□ □□□□ □□□□ □□ □□ □□□□ □□ □□□□ □□ □□□□ □□□□□□□□□□.

3. O-Leading □□□□□□ □□ □□□□ □□ □□□□□□?

□□□□ FR4, □ TG □ □□□ □□ □□ □□, Rogers, Arlon, Telfon, □□□□ / □□ □□ □□□□, PI □

4. PCB □□□□ □□□□ □□□□□□□□?

Gerber 274-X □□□□□□ □□□□□□ □□ □□ □□□□□□. □□ Cam350, CAD, Protel 99se, PADS, DXP □ Eagle□ □□ □□ □□□□□□.

5. PCB 製造工程のフローを説明せよ？

設計 → 材料調達 → 前処理 → AOI → 印刷 → 露光 → 現像 → PTH → 洗浄 → 検査 → 組立 → 検査 → 出荷
AOI → 検査 → 検査 → 検査 → 検査 → E / T → 検査。