

O-leading PCB PCB MCPCB.

PCB 10 PCB PCB PCB. PCB - PCB, PCB PCB, PCB PCB PCB MCPCB. PCB PCB PCB PCB PCB
PCB - 24 PCB S / S, 48-96 PCB PCB 4-8 PCB.

PCB PCB PCB .025 AVG, .020 MIN .. PCB PCB PCB PCB PCB

PCB PCB PCB, 25 PCB / bag, PCB PCB PCB, PCB PCB PCB PCB

PCB PCB

PCB PCB PCB

| | | | |
|--------------|----------------------------------|--------------|---------------|
| PCB | PCB, PCB (PCB) | PCB | PCB - PCB |
| PCB PCB | FR-4, PCB | PCB PCB | 0.5oz ~ 5oz |
| PCB. PCB PCB | 0.2mm | PCB. PCB PCB | 0.2mm |
| PCB PCB | PCB PCB, OSP, PCB HASL | PCB PCB | 0.2mm |
| PCB PCB | LED, PCB, PCB, PCB | PCB | PCB PCB PCB |
| PCB | ISO9001, UL, RoHS, SGS | Q / CTN | 10PCS-100PCS |
| PCB | 0.01kg ~ 5kg | MOQ | 10 PCB |
| PCB | PCB, PCB, PCB, PCB .yellow | PCB. PCB PCB | 0.2mm |
| PCB PCB | PCB PCB pcb PCB PCB pcba PCB PCB | PCB | \$ 0.1- \$ 10 |
| PCB | PCB PCB PCB | PCB | 0.01m3-10m3 |

PCB & PCB

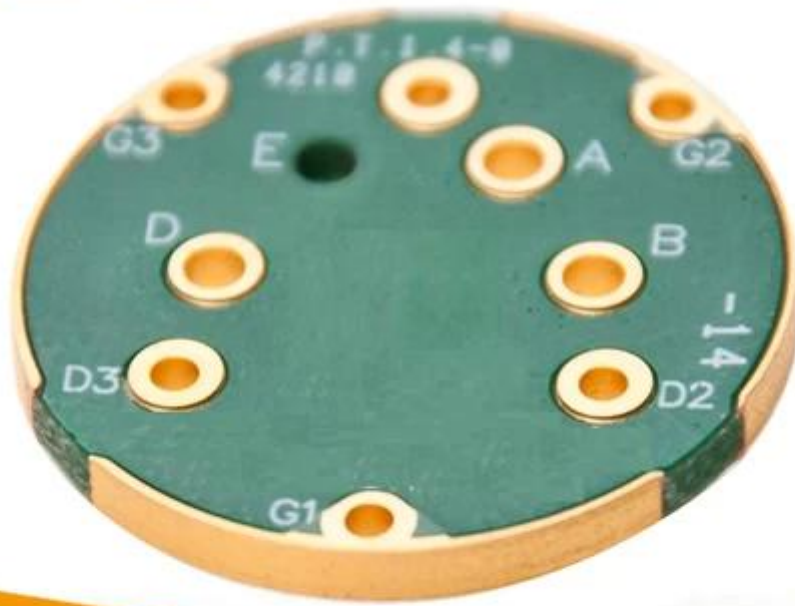
| | |
|---------------|--------------------------------|
| PCB PCB PCB : | 16 PCB PCB OEM pcb PCB PCB PCB |
| PCB PCB PCB : | 7-12 PCB |

PCB PCB

16 PCB PCB OEM pcb PCB PCB

| PCB | 2014 | | 2015 ~ 2016 | | 2017 ~ 2018 | |
|--------------------|-------|-------|-------------|-------|-------------|-------|
| | PCB | PCB | PCB | PCB | PCB | PCB |
| PCB PCB | 32 | 42 | 38 PCB | 44 | 42 | 48 |
| PCB PCB / PCB (µm) | 50/50 | 40/45 | 40/45 | 40/40 | 35/40 | 35/35 |

| | | | | | | |
|----------------------------------|--|-----------|-----------|-----------|-----------|-----------|
| □ □ □ □ □ □ (mm) | 0.15 | 0.10 | 0.15 | 0.10 | 0.15 | 0.10 |
| □ □ □ PTH | 14 : 1 | 16 : 1 | 16 : 1 | 18 : 1 | 18 : 1 | 20 : 1 |
| N + C + N | 4 + C + 4 | 5 + C + 5 | 5 + C + 5 | 6 + C + 6 | 5 + C + 5 | 6 + C + 6 |
| □ □ □ □ □ □ □ □ | 5 + 2 + 5 | 6 + 2 + 6 | 5 + 2 + 5 | 6 + 2 + 6 | 5 + 2 + 5 | 6 + 2 + 6 |
| □ □ □ □ □ □ □ | □ | - | □ | - | □ | - |
| □ □ . □ □ □ □ (□ □ □ □) (μm) | 50 | 40 | 40 | 30 | 40 | 30 |
| □ □ . □ □ □ □ □ □ □ □ (μm) | 75 | 65 | 65 | 50 | 50 | 40 |
| □ □ □ □ □ □ □ □ □ □ / □ □ □ □ | □ | - | □ | - | □ | - |
| □ □ □ | FR4, Megtron, Nelco, Rogers, Heavy Copper □ | | | | | |
| □ □ □ □ □ □ □ □ □ PCB | □ | - | □ | - | □ | - |
| □ □ □ □ | □ □ HASL, ENIG, OSP, □ □ □ □, □ □ □ □, □ □ □ □ □, □ □ □ □ □ □ □ □, □ □ □ □ □ □ □ □, □ □ □ □ □ □ □ □ □ □, □ □ □ □ □ □ □ □ | | | | | |



www.o-leading.com

PCB 製造 廠, PCB 製造 廠, pcb 製造 廠









201726 201VZL430354 - Wiring, Printed - Component



ZPMV2.E490354
Wiring, Printed - Component

For enhanced search functionality, please visit UL's [ULi Family of Databases](#).
Click on a product designation for complete information.

Page Bottom

Wiring, Printed - Component

See General Information for Wiring, Printed - Components

O-LEADING SUPPLY CHAIN CO LIMITED

Fortune Building, Nanheng West Road
Room 1313
Huizhou, Guangdong 516211, CHINA

E490354

| | Cond Width | | | SS/ DS/ | Area Diam | Solder | | Temp | | Flame | RoHS | C |
|---|---------------|---------------|-----------------------|------------|--------------|--------|-------|------|-------|-------|------|---|
| | Min | Max | Min | | | Max | Class | DSR | | | | |
| Typ | max(in) | mm(in) | mic(mil) | DSO | mm(in) | C | sec | C | Class | DSR | I | |
| Multi-layer (mass laminate) printed wiring boards. | | | | | | | | | | | | |
| O-LEADING-401 | | | | | | | | | | | | |
| | 0.2 (0.004) | 0.3 (0.012) | 34 (1.34) | D6 | 12.7 (0.5) | 260 | 10 | 130 | V-0 | - | - | |
| O-LEADING-407 | | | | | | | | | | | | |
| | 0.08 (0.003) | 0.2 (0.008) | 17 (0.67) | D5 | 9.2 (0.4) | 260 | 10 | 170 | V-0 | NI | - | |
| Multi-layer printed wiring boards. | | | | | | | | | | | | |
| O-LEADING-408 | | | | | | | | | | | | |
| | 0.125 (0.005) | 0.125 (0.005) | 12 (0.47) min:1.25 | D6 | 50.8 (2.0) | 260 | 20 | 130 | V-0 | NI | * | |
| Single layer printed wiring boards. | | | | | | | | | | | | |
| O-LEADING-002 | | | | | | | | | | | | |
| | 0.76 (0.015) | 1.14 (0.045) | 34 (1.34) | S5 | 19.1 (0.8) | 260 | 10 | 105 | V-0 | NI | - | |
| O-LEADING-003 | | | | | | | | | | | | |
| | 0.38 (0.015) | 1.14 (0.045) | 34 (1.34) | S5 | 19.1 (0.8) | 260 | 10 | 130 | V-0 | ▲ | - | |
| O-LEADING-033 | | | | | | | | | | | | |
| | 0.15 (0.006) | 0.3 (0.012) | 34 (1.34) | S5 | 25.4 (1.0) | 260 | 10 | 120 | V-0 | NI | - | |
| O-LEADING-205 | | | | | | | | | | | | |
| | 0.1 (0.004) | 0.3 (0.012) | 34 (1.34) | D6 | 69.6 (2.7) | 260 | 10 | 130 | V-0 | NI | - | |
| O-LEADING-206 | | | | | | | | | | | | |
| | 0.15 (0.006) | 0.33 (0.013) | 17 (0.67) | D5 | 69.6 (2.7) | 260 | 10 | 130 | V-0 | NI | - | |

* - CTI marking is optional and may be marked on the printed wiring board.

Marking: Company name or file number and type designation. May be followed by a suffix to denote factory identification or burning test classification.
Last updated on 2017-01-27

Questions? [Print this page](#) [Terms of Use](#) [Page Top](#)

http://www.ul.com/ulcertification/UL60718RMS/ewg/zpmv2.e490354/wiring-printed-component/10



Test Report

No. CANEC1805164701

Date: 03 Apr 2018

Page 2 of 8

Test Results:

Test Part Description:

Specimen No. **SGS Sample ID** **Description**
SN1 CAN18-051647.001 Green "PCB"

Remarks:

- (1) 1 mg/kg = 1 ppm = 0.0001%
- (2) MDL = Method Detection Limit
- (3) ND = Not Detected (< MDL)
- (4) "-" = Not Regulated

RoHS Directive (EU) 2015/863 amending Annex II to Directive 2011/65/EU

Test Method: With reference to IEC 62321-4:2014+A1:2017, IEC62321-5:2013, IEC62321-7-2:2017, IEC 62321-6:2015 and IEC62321-8:2017, analyzed by ICP-OES, UV-Vis and GC-MS.

| Test Item(s) | Limit | Unit | MDL | Det |
|----------------------------|-------|-------|-----|-----|
| Cadmium (Cd) | 100 | mg/kg | 2 | ND |
| Lead (Pb) | 1,000 | mg/kg | 2 | 9 |
| Mercury (Hg) | 1,000 | mg/kg | 2 | ND |
| Hexavalent Chromium (CrVI) | 1,000 | mg/kg | 8 | ND |
| Sum of PBBs | 1,000 | mg/kg | - | ND |
| Monobromobiphenyl | - | mg/kg | 5 | ND |
| Dibromobiphenyl | - | mg/kg | 5 | ND |
| Tribromobiphenyl | - | mg/kg | 5 | ND |
| Tetrabromobiphenyl | - | mg/kg | 5 | ND |
| Pentabromobiphenyl | - | mg/kg | 5 | ND |
| Hexabromobiphenyl | - | mg/kg | 5 | ND |
| Heptabromobiphenyl | - | mg/kg | 5 | ND |
| Octabromobiphenyl | - | mg/kg | 5 | ND |
| Nonabromobiphenyl | - | mg/kg | 5 | ND |
| Decabromobiphenyl | - | mg/kg | 5 | ND |
| Sum of PBDEs | 1,000 | mg/kg | - | ND |
| Monobromodiphenyl ether | - | mg/kg | 5 | ND |
| Dibromodiphenyl ether | - | mg/kg | 5 | ND |
| Tribromodiphenyl ether | - | mg/kg | 5 | ND |
| Tetrabromodiphenyl ether | - | mg/kg | 5 | ND |
| Pentabromodiphenyl ether | - | mg/kg | 5 | ND |



SGS is pleased to announce the launch of its new online platform for the provision of test results. The platform is designed to provide a secure and efficient way for clients to access their test results. The platform is available in multiple languages and is accessible 24/7. For more information, please contact your account manager or visit [www.sgslab.com](#).

Member of the SGS Group (SGS SA)

□□ & □□

| | |
|----------|--------------------------|
| □□ □□ □□ | 16 □ □□ OEM pcb □□ □□ □□ |
| □□ □□ □□ | 7-12 □ |



□□□□ □□

1. O-Leading□ □□□ □□□□□□□□?

□□□□ □□□□ □□□□ □□ □□□□□□.

1. □ □□□□□ ISO 9001 : 2008 □□□□ □□ □□□□ □□□□□□.
2. □□ □□ □□□□□□ □□□□□□ □□□□ □□
3. State-of-art □□□□ □□ □□ □ □□. □ : □□□□ □□□□, X □ □□, AOI (□□□□ □□□□) □ ICT (□□□□ □□□□).
4. □□ □□ □□ □□□□□□ □□ □ □□ □□ □□ □□ □
5. □□□□ □□ □□ □ □□

2. O-Leading□ □□ □□□□ □□□□□□□□?

□□ 10 □ □□ □□ □□□□ (□ : □□, □□ □□) □ □□□ □ □□, □ □ □□ □ □ □□□□□□. □□ □□ □□□□ □□ □□ 31 % □□□□ □□□□. □□ □□□□ □□ □□□□□□. □□□□ O-Leading□ □□□□ □□□□□□□□□□□□. □□ □□ □□, □□□□ □□ □ □□□ □□□□ □□ □□□□ □□ □□□□. □ □□ □□□□ □□□□ □□□□ □□ □□□□ □□□□ □□□□.

3. O-Leading □□□□□□ □□ □□□□ □□ □ □□□□□?

□□□□ FR4, □ TG □ □□□ □□ □□, Rogers, Arlon, Telfon, □□□□ / □□ □□ □□, PI □

4. PCB □□□□ □□□□ □□□□□□□□?

Gerber 274-X □□□□ □□□□ □□□□ □□ □□ □□□□. □□ Cam350, CAD, Protel 99se, PADS, DXP □ Eagle□ □□ □ □□

□□□□.

5. □□ PCB□ □□□□ □□ □□□ □□□□□?

□□ □□ → □□ □□ □ → □□ □□ → □□ AOI → □□ □□ → □□ → □□ → □□ → PTH → □□ → □□ □□ □ → □□ □□ → □□ □□ → □
□ AOI → □□ □□□ → □□ □□ → □□ □□ → □□□ → E / T → □□ □□.