

O-leading PCB PCB PCB PCB.

PCB 10 PCB PCB PCB PCB PCB PCB. PCB - PCB, PCB PCB, PCB PCB, PCB PCB PCB MCPCB. PCB PCB PCB PCB PCB PCB
 PCB PCB - 24 PCB S / S, 48-96 PCB PCB 4-8 PCB. (PCB PCB PCB PCB PCB)

PCB PCB PCB .025 AVG, .020 MIN .. PCB PCB PCB PCB PCB

PCB PCB PCB, 25 PC / bag, PCB PCB PCB, PCB PCB PCB PCB

PCB PCB PCB PCB PCB PCB : [led pcb board PCB PCB PCB](#)



PCB P / N	6L PCB TG170 pcb (BGA 8mil PCB)
PCB PCB	6L
PCB	FR-4 TG170
PCB 1PCBPCB	1.60mm
PCB thk	1 / 1 / 1 / 1 / 1 / 1 / 1oz
PCB PCB PCB PCB	0.20mm
PCB PCB (PCB)	683
PCB w / s	4 / 4 PCB
PCBPCB PCB. Y / N (Tol %)	PCB
PCB PCB	ENIG Au : 0.05-0.10UM
PCB PCB PCB PCB	PCB / PCB
PCB PCB PCB	PCB X (mm) : 63.7; PCB Y (mm) : 47.1
PCB PCB	PCB X (mm) : 143.4, PCB Y (mm) : 94.2, UPS PCB : 4
PCB : PCB PCB PCB	PCB
PCB / PCB	CNC

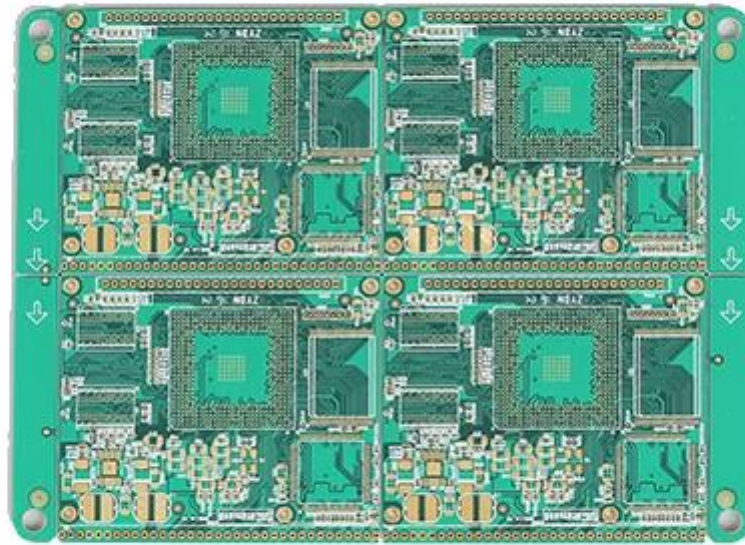
•



www.o-leading.com



www.o-leading.com



www.o-leading.com









201726 201VZL430354 - Wiring, Printed - Component



ZPMV2.E490354
Wiring, Printed - Component

For enhanced search functionality, please visit UL's [online family of databases](#).
Click on a product designation for complete information.

Page Bottom

Wiring, Printed - Component

See General Information for Wiring, Printed - Components

O-LEADING SUPPLY CHAIN CO LIMITED 4190354

Fortune Building, Nanheng West Road
Room 1313
Huizhou, Guangdong 516211, CHINA

Type	Cond Width			SS/ DS/	Area Diam	Solder		Flame	RoHS	C
	Min	Max	Min			Max	Temp			
Hub/Bayer (mass laminate) printed wiring boards.										
D-LEADING-401										
	0.2 (0.004)	0.3 (0.012)	34 (1.34)	D6	12.7 (0.5)	260	10	130	V-0	-
D-LEADING-407										
	0.08 (0.003)	0.2 (0.008)	17 (0.67)	D5	9.2 (0.4)	260	10	170	V-0	NI
Hub/Bayer printed wiring boards.										
D-LEADING-408										
	0.125 (0.005)	0.125 (0.005)	12 (0.47) 31-135	D6	50.8 (2.0)	260	20	130	V-0	NI
Single layer printed wiring boards.										
D-LEADING-002										
	0.76 (0.015)	1.14 (0.045)	34 (1.34)	S5	19.1 (0.8)	260	10	105	V-0	NI
D-LEADING-003										
	0.38 (0.015)	1.14 (0.045)	34 (1.34)	S5	19.1 (0.8)	260	10	130	V-0	▲
D-LEADING-033										
	0.15 (0.006)	0.3 (0.012)	34 (1.34)	S5	25.4 (1.0)	260	10	120	V-0	NI
D-LEADING-205										
	0.1 (0.004)	0.3 (0.012)	34 (1.34)	D6	69.6 (2.7)	260	10	130	V-0	NI
D-LEADING-206										
	0.15 (0.006)	0.33 (0.013)	17 (0.67)	D5	69.6 (2.7)	260	10	130	V-0	NI

* - CTI marking is optional and may be marked on the printed wiring board.

Marking: Company name or file number and type designation. May be followed by a suffix to denote factory identification or burning test classification.
Last updated on 2017-01-27

Questions? [Print this page](#) [Terms of Use](#) [Page Top](#)

http://www.ul.com/onlinecertifications/201VZL430354/Wiring,Printed-Component



Test Report

No. CANEC1805164701

Date: 03 Apr 2018

Page 2 of 8

Test Results:

Test Part Description:

Specimen No. **SGS Sample ID** **Description**
SN1 CAN18-051647.001 Green PCB*

Remarks:

- (1) 1 mg/kg = 1 ppm = 0.0001%
- (2) MDL = Method Detection Limit
- (3) ND = Not Detected (< MDL)
- (4) * = Not Regulated

RoHS Directive (EU) 2015/863 amending Annex II to Directive 2011/65/EU

Test Method: With reference to IEC 62321-4:2014+A1:2017, IEC 62321-5:2013, IEC 62321-7-2:2017, IEC 62321-6:2015 and IEC 62321-8:2017, analyzed by ICP-OES, UV-Vis and GC-MS.

Test Item(s)	Limit	Unit	MDL	Det
Cadmium (Cd)	100	mg/kg	2	ND
Lead (Pb)	1,000	mg/kg	2	9
Mercury (Hg)	1,000	mg/kg	2	ND
Hexavalent Chromium (CrVI)	1,000	mg/kg	8	ND
Sum of PBBs	1,000	mg/kg	-	ND
Monobromobiphenyl	-	mg/kg	5	ND
Dibromobiphenyl	-	mg/kg	5	ND
Tribromobiphenyl	-	mg/kg	5	ND
Tetrabromobiphenyl	-	mg/kg	5	ND
Pentabromobiphenyl	-	mg/kg	5	ND
Hexabromobiphenyl	-	mg/kg	5	ND
Heptabromobiphenyl	-	mg/kg	5	ND
Octabromobiphenyl	-	mg/kg	5	ND
Nonabromobiphenyl	-	mg/kg	5	ND
Decabromobiphenyl	-	mg/kg	5	ND
Sum of PBDEs	1,000	mg/kg	-	ND
Monobromodiphenyl ether	-	mg/kg	5	ND
Dibromodiphenyl ether	-	mg/kg	5	ND
Tribromodiphenyl ether	-	mg/kg	5	ND
Tetrabromodiphenyl ether	-	mg/kg	5	ND
Pentabromodiphenyl ether	-	mg/kg	5	ND



SGS is pleased to announce the launch of its new online certification platform, which provides a secure and efficient way to manage your certification needs. The platform is designed to be user-friendly and easy to navigate, allowing you to view your certification status, download certificates, and manage your account information. For more information, please visit [www.sgs.com/certification](#).

Member of the SGS Group (SGS SA)

□□ & □□

□□ □□ □□	16 □ □□ OEM pcb □□ □□ □□ (oem pcb □□.□□.□□.□□)
□□ □□ □□	7-12 □



□□□□ □□

1. O-Leading□ □□□ □□ □□□□?

□□□ □□□ □□□ □□ □□□□□.

1. □ □□□□□ ISO 9001 : 2008 □□□ □□ □□□ □□□□□.

2. □□ □□ □□□□□ □□□□□□ □□□□ □□

3. State-of-art □□□□ □□ □□ □ □□. □ : □□□ □□□, X □ □□, AOI (□□ □□ □□□) □ ICT (□□ □ □□□).

4. □□ □□ □□ □□□□□ □□ □ □□ □□ □□ □

5. □□□□ □□ □□ □ □□

2. O-Leading□ □□ □□□□ □□□ □□□□?

□□ 10 □ □□ □□ □□□ (□ : □□□, □□ □□□) □□□ □ □□, □ □ □□ □ □ □□□□□□. □□ □□ □□□□ □□ □□ 31 % □□□ □□□□. □□ □□□□ □□ □ □□□□□. □□□□ O-Leading□ □□□ □□□□□□ □□□□□□. □□ □□ □□, □□□□ □□ □ □□□ □□□ □□ □□□□ □□ □□□□. □□□□ □□□□ □□ □□□□ □□ □□□□.

□□□□ □□□□ □□ □□□□ □□□ □□ □ □ □□□ □□□□□ □□ □□□ □ □□□□.

3. O-Leading □□□□□ □□ □□□ □□ □ □□□□?

□□□□ FR4, □ TG □ □□□ □□ □□ □□, Rogers, Arlon, Telfon, □□□□ / □□ □□ □□, PI □

4. PCB □□□ □□□ □□□□ □□□□□?

Gerber 274-X □□□□ □□□□ □□□□ □□ □□ □□□□. □□ Cam350, CAD, Protel 99se, PADS, DXP □ Eagle□ □□ □ □ □□□

□.

5. □□ PCB□ □□□□ □□ □□□ □□□□□?

□□ □□ → □□ □□ □ → □□ □□ → □□ AOI → □□ □□ → □□ → □□ → □□ → PTH → □□ → □□ □□ □ → □□ □□ → □□ □□ → □□ AOI
→ □□ □□□ → □□ □□ → □□ □□ → □□□□ → E / T → □□ □□.