

# O-leading PCB PCB MCPCB.

10 10 PCB PCB. PCB - PCB, PCB, PCB, PCB MCPCB. PCB PCB PCB PCB  
24 S / S, 48-96 4-8.

(PCB PCB PCB PCB)

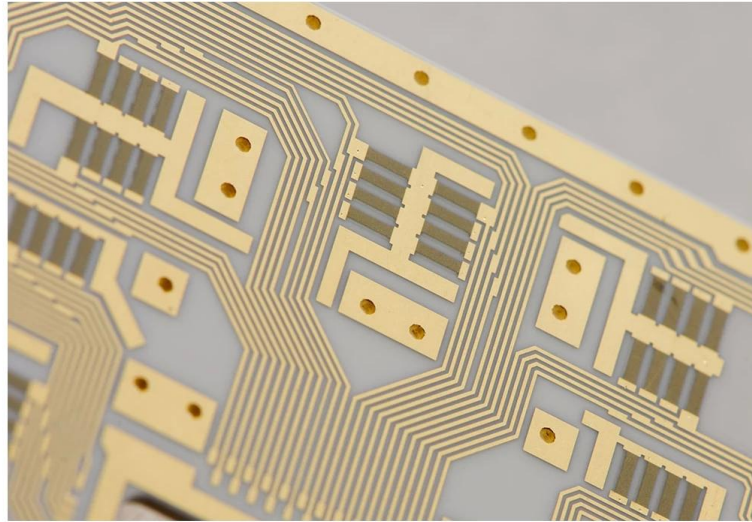
PCB PCB .025 AVG, .020 MIN .. PCB PCB PCB PCB

PCB PCB PCB, 25 PC / bag, PCB PCB PCB, PCB PCB PCB PCB

PCB PCB PCB PCB PCB PCB PCB : PCB PCB PCB PCB PCB PCB

## PCB PCB

PCB P / N	SS-66253-A
PCB PCB	2L
PCB	PCB PCB
PCB thk	0.80mm
PCB thk	1 / 1oz
PCB PCB PCB	0.2mm
PCB PCB (PCB)	37 PCB
PCB w / s	/
PCB PCB Y / N (Tol %)	PCB
PCB PCB	ENIG
PCB PCB PCB PCB	N / A / PCB
PCB PCB PCB	PCB X (mm) : 105, PCB Y (mm) : 127
PCB PCB	PCB X (mm) : 105, PCB Y (mm) : 127, UPS PCB : 1
PCB : PCB PCB PCB	PCB
PCB / PCB	CNC



[www.o-leading.com](http://www.o-leading.com)

PCB 100%

100%







201726 ZPMV2.E490354 - Wiring, Printed - Component

**UL ONLINE CERTIFICATIONS DIRECTORY**

**ZPMV2.E490354**  
Wiring, Printed - Component

For enhanced search functionality, please visit UL's [ICD Family of Databases](#).  
Click on a product designation for complete information.  
[Page Bottom](#)

**Wiring, Printed - Component**

[See General Information for Wiring, Printed - Components](#)

**O-LEADING SUPPLY CHAIN CO LIMITED** 4190354  
Fortune Building, Nanheng West Road  
Room 1313  
Huizhou, Guangdong 516211, CHINA

	Cond Width			SS/ DS/ Diam	Area	Solder		Dper		Flame	RoHS	C
	Min	Max	Edge			Min	Max	Temp	Class			
Typ	max(in)	mm(in)	mic(mil)	DS0	mm(in)	C	sec	C	Class	DSR	I	
<b>Hullayer (mass laminate) printed wiring boards.</b>												
<b>D-LEADING-401</b>												
	0.2 (0.004)	0.3 (0.012)	34 (1.34)	D6	12.7 (0.5)	260	10	130	V-0	-	-	
<b>D-LEADING-407</b>												
	0.08 (0.003)	0.2 (0.008)	17 (0.67)	D5	9.2 (0.4)	260	10	170	V-0	NI	-	
<b>Hullayer printed wiring boards.</b>												
<b>D-LEADING-408</b>												
	0.125 (0.005)	0.125 (0.005)	12 (0.47) 31-135	D6	50.8 (2.0)	260	20	130	V-0	NI	*	
<b>Single layer printed wiring boards.</b>												
<b>D-LEADING-002</b>												
	0.76 (0.015)	1.14 (0.045)	34 (1.34)	S5	19.1 (0.8)	260	10	105	V-0	NI	-	
<b>D-LEADING-003</b>												
	0.38 (0.015)	1.14 (0.045)	34 (1.34)	S5	19.1 (0.8)	260	10	130	V-0	▲	-	
<b>D-LEADING-033</b>												
	0.15 (0.006)	0.3 (0.012)	34 (1.34)	S5	25.4 (1.0)	260	10	120	V-0	NI	-	
<b>D-LEADING-205</b>												
	0.1 (0.004)	0.3 (0.012)	34 (1.34)	D6	69.6 (2.7)	260	10	130	V-0	NI	-	
<b>D-LEADING-206</b>												
	0.15 (0.006)	0.33 (0.013)	17 (0.67)	D5	69.6 (2.7)	260	10	130	V-0	NI	-	

\* - CTI marking is optional and may be marked on the printed wiring board.

Making: Company name or file number and type designation. May be followed by a suffix to denote factory identification or burning test classification.  
Last updated on 2017-01-27

Questions? [Print this page](#) [Terms of Use](#) [Page Top](#)

[http://www.ul.com/portal/ulcert/ICD/FamilyofDatabases/Item/ZPMV2.E490354/Component/Wiring,Printed-Component/10](#)



**Test Report** No. CANEC1805164701 Date: 03 Apr 2018 Page 2 of 8

Test Results:

Test Part Description:

Specimen No. **SGS Sample ID Description**  
SN1 CAN18-051647.001 Green PCB\*

Remarks:

(1) 1 mg/kg = 1 ppm = 0.0001%  
(2) MDL = Method Detection Limit  
(3) ND = Not Detected (< MDL)  
(4) \* = Not Regulated

**RoHS Directive (EU) 2015/863 amending Annex II to Directive 2011/65/EU**

Test Method: With reference to IEC 62321-4:2014+A1:2017, IEC 62321-5:2013, IEC 62321-7-2:2017, IEC 62321-6:2015 and IEC 62321-8:2017, analyzed by ICP-OES, UV-Vis and GC-MS.

Test Item(s)	Limit	Unit	MDL	Det
Cadmium (Cd)	100	mg/kg	2	ND
Lead (Pb)	1,000	mg/kg	2	9
Mercury (Hg)	1,000	mg/kg	2	ND
Hexavalent Chromium (CrVI)	1,000	mg/kg	8	ND
Sum of PBBs	1,000	mg/kg	-	ND
Monobromobiphenyl	-	mg/kg	5	ND
Dibromobiphenyl	-	mg/kg	5	ND
Tribromobiphenyl	-	mg/kg	5	ND
Tetrabromobiphenyl	-	mg/kg	5	ND
Pentabromobiphenyl	-	mg/kg	5	ND
Hexabromobiphenyl	-	mg/kg	5	ND
Heptabromobiphenyl	-	mg/kg	5	ND
Octabromobiphenyl	-	mg/kg	5	ND
Nonabromobiphenyl	-	mg/kg	5	ND
Decabromobiphenyl	-	mg/kg	5	ND
Sum of PBDEs	1,000	mg/kg	-	ND
Monobromodiphenyl ether	-	mg/kg	5	ND
Dibromodiphenyl ether	-	mg/kg	5	ND
Tribromodiphenyl ether	-	mg/kg	5	ND
Tetrabromodiphenyl ether	-	mg/kg	5	ND
Pentabromodiphenyl ether	-	mg/kg	5	ND



SGS is pleased to announce the launch of the new SGS Group logo. The logo is a symbol of the company's commitment to excellence and its position as a global leader in inspection, certification and testing services. The logo is a symbol of the company's commitment to excellence and its position as a global leader in inspection, certification and testing services.

## □□ & □□

□□ □□ □□	16 □ □□ OEM pcb □□ □□ □□
□□ □□ □□	7-12 □



## □□□□ □□

### 1. O-Leading□ □□□ □□□□ □□□□?

□□□□ □□□□ □□□□ □□ □□□□□□.

1. □ □□□□□ ISO 9001 : 2008 □□□□ □□ □□□□□□.
2. □□ □□ □□□□□□ □□□□□□ □□□□ □□
3. State-of-art □□□□ □□ □ □□. □ : □□□□ □□□□, X □ □□, AOI (□□□□ □□□□) □ ICT (□□□□ □□□□).
4. □□ □□ □□ □□□□□□ □□ □ □□ □□ □□ □□
5. □□□□ □□ □□ □ □□

### 2. O-Leading□ □□ □□□□ □□□□ □□□□?

□□ 10 □ □□ □□ □□□□ (□ : □□, □□ □□) □□□□ □ □□, □ □ □□ □ □ □□□□□□. □□ □□ □□□□ □□ □□ 31 % □□□□ □□□□. □□ □□□□ □□ □□□□□□. □□□□ O-Leading□ □□□□ □□□□□□ □□□□□□. □□ □□ □□, □□□□ □□ □ □□□ □□□□ □□ □□□□ □□ □□□□. □ □□□ □□□□ □□□□ □□ □□□□ □□ □□□□ □□□□.

□□□□ □□□□ □□ □□□□ □□□□ □□ □ □ □□ □□□□□□ □□ □□□□ □ □□□□.

### 3. O-Leading □□□□□□ □□ □□□□ □□ □ □□□□?

□□□□ FR4, □ TG □ □□□ □□ □□ □□, Rogers, Arlon, Telfon, □□□□ / □□ □□ □□, PI □

4. PCB 圖檔 輸出 圖檔 圖檔圖?

Gerber 274-X 圖檔 圖檔 圖檔 圖 圖 圖檔. 圖 Cam350, CAD, Protel 99se, PADS, DXP 圖 Eagle 圖 圖 圖 圖檔.

5. 圖 PCB 圖檔 圖 圖 圖檔圖?

圖 圖 → 圖 圖 圖 → 圖 圖 → 圖 AOI → 圖 圖 → 圖 → 圖 → 圖 → PTH → 圖 → 圖 圖 圖 → 圖 圖 → 圖 圖 → 圖  
圖 AOI → 圖 圖 → 圖 圖 → 圖 圖 → 圖 → E / T → 圖 圖.