

# O-leading PCB PCB PCB.

10 PCB PCB. PCB - PCB, PCB, PCB, PCB PCB MCPCB. PCB PCB PCB PCB PCB  
 - 24 S / S, 48-96 PCB 4-8 . (PCB PCB)

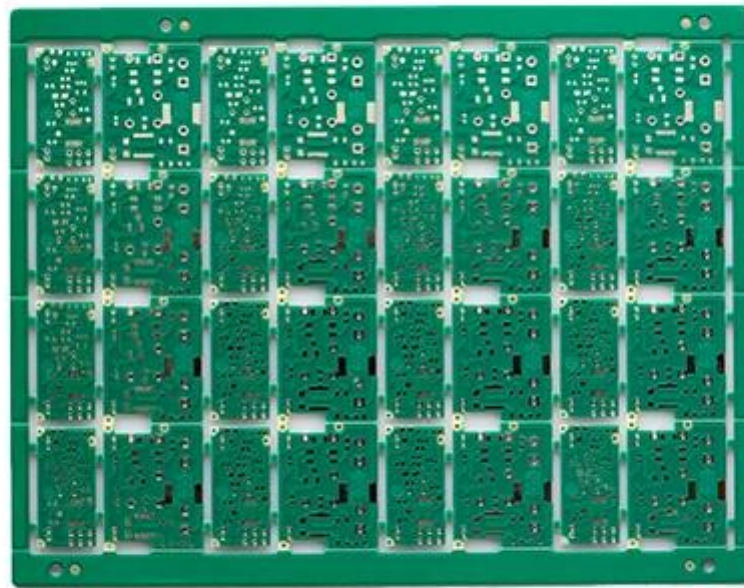
PCB .025 AVG, .020 MIN .. PCB PCB PCB

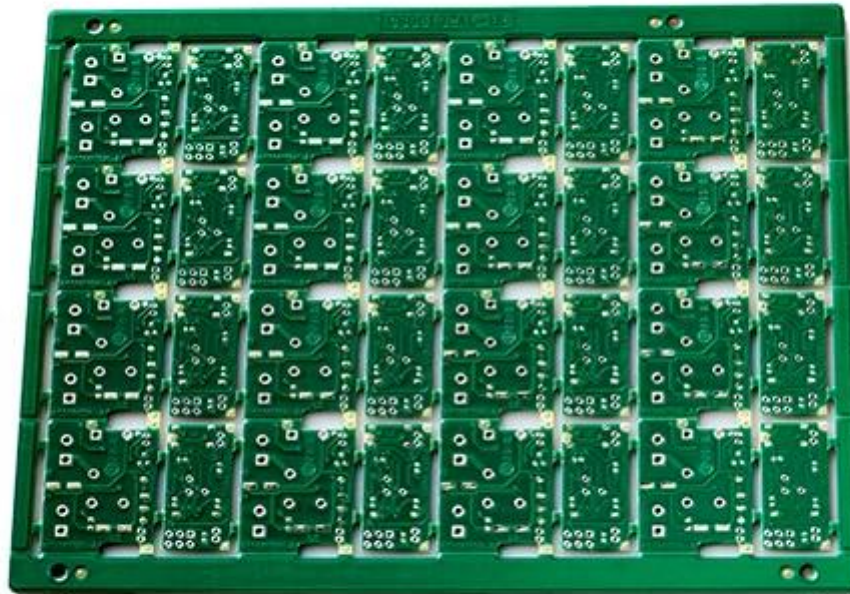
PCB PCB, 25 PC / bag, PCB PCB, PCB PCB PCB

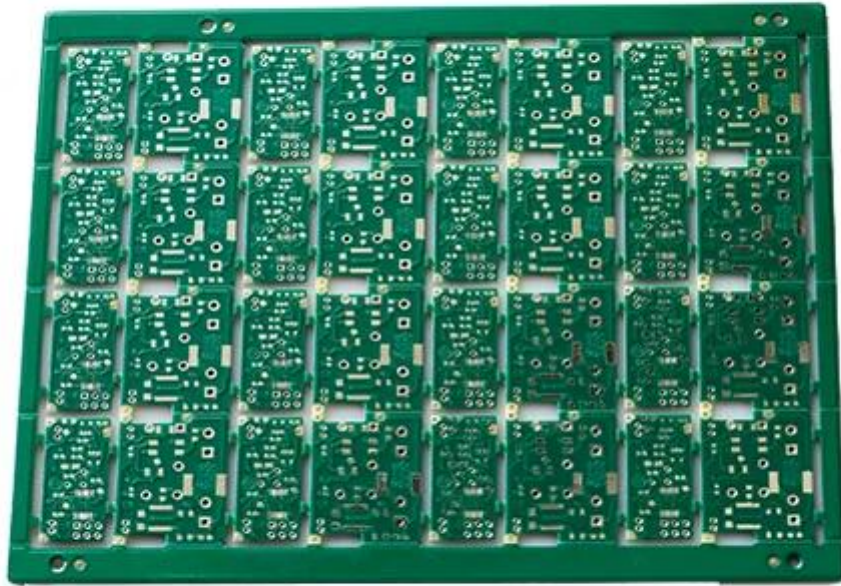
PCB PCB PCB : PCB PCB pcb wholesales PCB

## PCB PCB

PCB P / N	PCB PCB pcb 3 / 3oz
PCB PCB	2
PCB	FR-4 TG130
PCB thk	1.00mm
PCB thk	3 / 3oz
PCB PCB PCB	0.50mm
PCB PCB ( )	106
PCB w / s	10 PCB 10 PCB
PCB PCB. Y / N (Tol %)	PCB
PCB PCB	LF-HASL
PCB PCB PCB PCB	PCB / N / A
PCB PCB PCB	PCB X (mm) : 44.5; PCB Y (mm) : 34
PCB PCB	Dim X (mm) : 198, Dim Y (mm) : 156, UPS PCB PCB : 16
PCB : PCB PCB PCB	PCB
PCB / PCB	CNC







[www.o-leading.com](http://www.o-leading.com)













201726 201VZL430354 - Wiring, Printed - Component



ZPMV2.E490354  
Wiring, Printed - Component

For enhanced search functionality, please visit UL's [online family of databases](#).  
Click on a product designation for complete information.

Page Bottom

Wiring, Printed - Component

See General Information for Wiring, Printed - Components

O-LEADING SUPPLY CHAIN CO LIMITED 4190354  
Fortune Building, Nanheng West Road  
Room 1313  
Huizhou, Guangdong 516211, CHINA

	Cond Width			SS/ DS/	Area Diam	Solder		Flame	RoHS	C
	Min	Max	Max			Temp	Class			
Min	Edge	Thk	DS/	Thk	Temp	Class	DSR	I		
<b>Multi-layer (mass laminate) printed wiring boards.</b>										
<b>O-LEADING-401</b>										
0.2 (0.004)	0.3 (0.012)	34 (1.34)	D6	12.7 (0.5)	260	10	130	V-0	-	-
<b>O-LEADING-407</b>										
0.08 (0.003)	0.2 (0.008)	17 (0.67)	D5	9.2 (0.4)	260	10	170	V-0	NI	-
<b>Multi-layer printed wiring boards.</b>										
<b>O-LEADING-408</b>										
0.125 (0.005)	0.125 (0.005)	12 (0.47) 11-135	D6	50.8 (2.0)	260	20	130	V-0	NI	*
<b>Single layer printed wiring boards.</b>										
<b>O-LEADING-002</b>										
0.76 (0.015)	1.14 (0.045)	34 (1.34)	S5	19.1 (0.8)	260	10	105	V-0	NI	-
<b>O-LEADING-003</b>										
0.38 (0.015)	1.14 (0.045)	34 (1.34)	S5	19.1 (0.8)	260	10	130	V-0	▲	-
<b>O-LEADING-033</b>										
0.15 (0.006)	0.3 (0.012)	34 (1.34)	S5	25.4 (1.0)	260	10	120	V-0	NI	-
<b>O-LEADING-205</b>										
0.1 (0.004)	0.3 (0.012)	34 (1.34)	D6	69.6 (2.7)	260	10	130	V-0	NI	-
<b>O-LEADING-206</b>										
0.15 (0.006)	0.33 (0.013)	17 (0.67)	D5	69.6 (2.7)	260	10	130	V-0	NI	-

\* - CTI marking is optional and may be marked on the printed wiring board.

Marking: Company name or file number and type designation. May be followed by a suffix to denote factory identification or burning test classification.  
Last updated on 2017-01-27

Questions? [Print this page](#) [Terms of Use](#) [Page Top](#)

http://www.ul.com/onlinecertifications/201VZL430354/Wiring,Printed-Component



Test Report

No. CANEC1805164701

Date: 03 Apr 2018

Page 2 of 8

Test Results:

Test Part Description:

Specimen No. **SGS Sample ID Description**  
SN1 CAN18-051647.001 Green "PCB"

Remarks:

- (1) 1 mg/kg = 1 ppm = 0.0001%
- (2) MDL = Method Detection Limit
- (3) ND = Not Detected (< MDL)
- (4) "-" = Not Regulated

RoHS Directive (EU) 2015/863 amending Annex II to Directive 2011/65/EU

Test Method: With reference to IEC 62321-4:2014+A1:2017, IEC62321-5:2013, IEC62321-7-2:2017, IEC 62321-6:2015 and IEC62321-8:2017, analyzed by ICP-OES, UV-Vis and GC-MS.

Test Item(s)	Limit	Unit	MDL	Det
Cadmium (Cd)	100	mg/kg	2	ND
Lead (Pb)	1,000	mg/kg	2	9
Mercury (Hg)	1,000	mg/kg	2	ND
Hexavalent Chromium (CrVI)	1,000	mg/kg	8	ND
Sum of PBBs	1,000	mg/kg	-	ND
Monobromobiphenyl	-	mg/kg	5	ND
Dibromobiphenyl	-	mg/kg	5	ND
Tribromobiphenyl	-	mg/kg	5	ND
Tetrabromobiphenyl	-	mg/kg	5	ND
Pentabromobiphenyl	-	mg/kg	5	ND
Hexabromobiphenyl	-	mg/kg	5	ND
Heptabromobiphenyl	-	mg/kg	5	ND
Octabromobiphenyl	-	mg/kg	5	ND
Nonabromobiphenyl	-	mg/kg	5	ND
Decabromobiphenyl	-	mg/kg	5	ND
Sum of PBDEs	1,000	mg/kg	-	ND
Monobromodiphenyl ether	-	mg/kg	5	ND
Dibromodiphenyl ether	-	mg/kg	5	ND
Tribromodiphenyl ether	-	mg/kg	5	ND
Tetrabromodiphenyl ether	-	mg/kg	5	ND
Pentabromodiphenyl ether	-	mg/kg	5	ND



SGS is pleased to announce the launch of its new online certification platform, which provides a secure and efficient way to manage your certification data. The platform is designed to be user-friendly and easy to navigate, allowing you to view and manage your certification data from anywhere, at any time. For more information, please contact your account manager or visit our website at [www.sgs.com](#).

Member of the SGS Group (SGS SA)

## □□ & □□

□□ □□ □□	16 □ □□ OEM pcb □□ □□ □□ (pcb.□□ □□ □□ □□ □□)
□□ □□ □□	7-12 □



## □□□□ □□

1. O-Leading□ □□□ □□□□ □□□□?

□□□□ □□□□ □□□□ □□ □□□□□□.

1. □ □□□□□ ISO 9001 : 2008 □□□□ □□ □□ □□□□□□.

2. □□ □□ □□□□□□ □□□□□□ □□□□ □□

3.State-of-art □□□□ □□ □ □□. □ : □□□□ □□□□, X □ □□, AOI (□□□□ □□□□) □ ICT (□□□□ □□□□).

4. □□ □□ □□ □□□□□□ □□ □ □□ □□ □□ □

5. □□□□ □□ □□ □ □□

2. O-Leading□ □□ □□□□ □□□□ □□□□?

□□ 10 □ □□ □□ □□□□ (□ : □□, □□ □□)□ □□□ □ □□, □ □ □□ □ □ □□□□□□. □□ □□ □□□□ □□ □□ 31 %□ □□□□ □□□□. □□ □□□□ □□ □□□□□□. □□□□ □□□□ □□ □□□□ □□ □□□□ □□ □□□□ □□ □□□□ □□ □□□□. □ □□□ □□□□ □□□□ □□ □□□□ □□ □□□□ □□ □□□□ □□ □□□□.

□□□□ □□□□ □□ □□□□ □□□□ □□ □ □ □□□□ □□□□ □□ □□□□ □□ □□□□ □ □□□□.

3. O-Leading □□□□□□ □□ □□□□ □□ □□ □□□□?

□□□□ FR4, □ TG □ □□□ □□ □□ □□, Rogers, Arlon, Telfon, □□□□ / □□ □□ □□, PI □



4. PCB 圖檔 輸出 圖檔 圖檔圖?

Gerber 274-X 圖檔 圖檔 圖檔 圖 圖 圖檔. 圖 Cam350, CAD, Protel 99se, PADS, DXP 圖 Eagle 圖 圖 圖 圖檔.

5. 圖 PCB 圖檔 圖 圖 圖檔圖?

圖 圖 → 圖 圖 圖 → 圖 圖 → 圖 AOI → 圖 圖 → 圖 → 圖 → 圖 → PTH → 圖 → 圖 圖 圖 → 圖 圖 → 圖 圖 → 圖  
圖 AOI → 圖 圖 → 圖 圖 → 圖 圖 → 圖 → E / T → 圖 圖.