

O-leading PCB PCB PCBPCB.

PCB 10 PCB PCB PCB PCB PCB. PCB - PCB, PCB PCB, PCB PCB, PCB PCB PCB MCPCB. PCB PCB PCB PCB PCB PCB
 PCB PCB - 24 PCB S / S, 48-96 PCB PCB 4-8 PCB. (PCB PCB pcb PCB PCB)

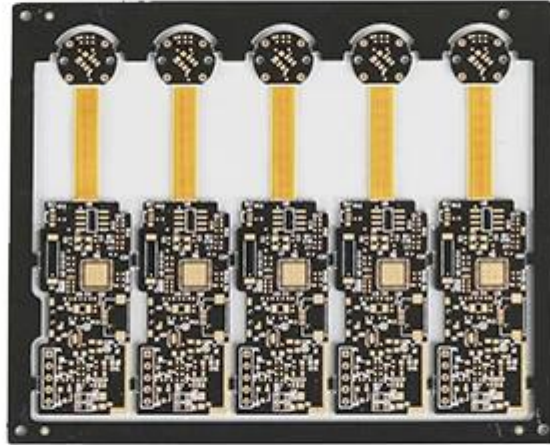
PCB PCB PCB .025 AVG, .020 MIN .. PCB PCB PCB PCB PCB

PCB PCB PCB, 25 PC / bag, PCB PCB PCB, PCB PCB PCB PCB

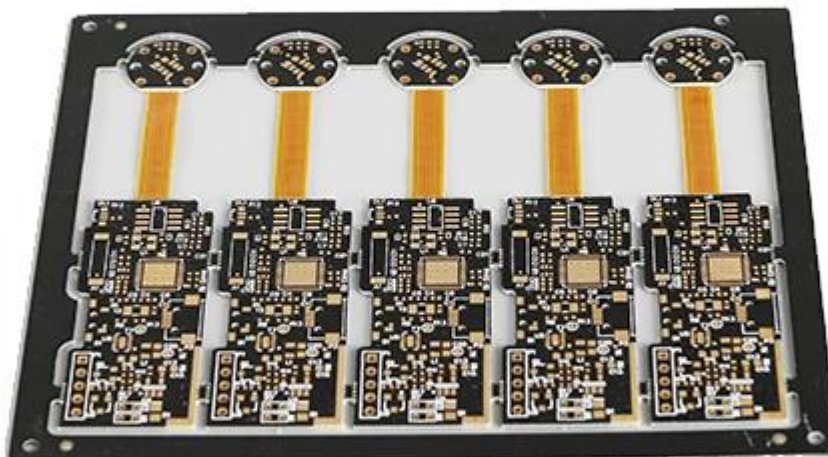
PCB PCB PCB PCB PCB PCB : pcb PCB PCB PCB PCB



PCB P / N	ENIG PCB PCB - PCB PCB
PCB PCB	4L (PCB 2L + PCB 2L)
PCB	FR-4 TG150
PCB thk	0.80mm
PCB thk	1/1/1/1 PCB
PCB PCB PCB PCB	0.30mm
PCB PCB (PCB)	251
PCB w / s	5 / 6 PCB
PCB PCB PCB. Y / N (Tol %)	PCB
PCB PCB	ENIG Au : 0.05-0.10UM
PCB PCB PCB PCB	PCB, PCB
PCB PCB PCB	PCB X (mm) : 18.6; PCB Y (mm) : 92.2
PCB PCB	PCB X (mm) : 115, PCB Y (mm) : 106.2, UPS PCB : 5
PCB : PCB PCB PCB	PCB
PCB / PCB	CNC



www.o-leading.com



www.o-leading.com









CICC INSPECTION CERTIFICATION



QUALITY MANAGEMENT SYSTEM CERTIFICATE

Certificate No.: 16118Q10347R05

We hereby certify that

O-LEADING SUPPLY CHAIN(HK) CO.,LIMITED

Credit No.: 61691591-000-07-17-2

Registration Add: ROOM 603D 6/F HANG PONT COMMERCIAL BUILDING, 31 TONKIN ST. CHEUNG SHA WAN, K.L. HK

Business Add: 1313 Floor 13 Fortune Building, Danshui Town Huiyang District, Huizhou, Guangdong, China

Has implemented and maintains a **Quality Management System** Which fulfills the requirements of the following standards
GB/T19001-2016 idt ISO9001:2015

Scope of certification
Sales of printed circuit boards

Initial Issuance period: February 27, 2018
This certificate is valid during: February 27, 2018 -- February 26, 2021
This certificate is invalid without CICC qualified label in the following period

First supervision and audit	Qualified mark
Second supervision and audit	Qualified mark

The certification registration scope shall include those product/service scopes which fail to be covered by the relevant effective administrative permission and qualification permission required by the state. The effectiveness of this certificate shall be evaluated by annual surveillance audit of CICC. The certificate shall be valid when used together with the surveillance audit conclusion. The related information of this certification can be searched at the portal of the site of company www.cicc.com.






201726 201VZL430354 - Wiring, Printed - Component

UL ONLINE CERTIFICATIONS DIRECTORY

ZPMV2.E490354
Wiring, Printed - Component

For enhanced search functionality, please visit [UL's IoT Family of Databases](#).
Click on a product designation for complete information.

[Page Bottom](#)

Wiring, Printed - Component

See General Information for Wiring, Printed - Components

O-LEADING SUPPLY CHAIN CO LIMITED 4190354
Fortune Building, Nanheng West Road
Room 1313
Huizhou, Guangdong 516211, CHINA

	Cond Width			SS/ DS/ Diam	Area	Max		Flame	RoHS	C	
	Min	Min Edge	Cond			Solder Limits	Diper				
Typ	max(in)	mm(in)	mil(mm)	DSO	mm(in)	C	sec	C	Class	DSR	I
Multi-layer (mass laminate) printed wiring boards.											
O-LEADING-401											
	0.2 (0.004)	0.3 (0.012)	34 (1.34)	D6	12.7 (0.5)	260	10	130	V-0	-	-
O-LEADING-407											
	0.08 (0.003)	0.2 (0.008)	17 (0.67)	D5	9.2 (0.4)	260	10	130	V-0	NI	-
Multi-layer printed wiring boards.											
O-LEADING-408											
	0.125 (0.005)	0.125 (0.005)	12 (0.47) 31(1.25)	D6	50.8 (2.0)	260	20	130	V-0	NI	1
Single layer printed wiring boards.											
O-LEADING-002											
	0.76 (0.03)	1.14 (0.045)	34 (1.34)	D5	19.1 (0.8)	260	10	105	V-0	NI	-
O-LEADING-003											
	0.38 (0.015)	1.14 (0.045)	34 (1.34)	D5	19.1 (0.8)	260	10	130	V-0	▲	-
O-LEADING-033											
	0.15 (0.006)	0.3 (0.012)	34 (1.34)	D5	25.4 (1.0)	260	10	120	V-0	NI	-
O-LEADING-205											
	0.1 (0.004)	0.3 (0.012)	34 (1.34)	D6	69.6 (2.7)	260	10	130	V-0	NI	-
O-LEADING-206											
	0.15 (0.006)	0.33 (0.013)	17 (0.67)	D5	69.6 (2.7)	260	10	130	V-0	NI	-

* - CTI marking is optional and may be marked on the printed wiring board.

Marking: Company name or file number and type designation. May be followed by a suffix to denote factory identification or burning test classification.
Last updated on 2017-01-27

Questions? [Print this page](#) [Terms of Use](#) [Page Top](#)



Test Report No. CANEC1805164701 Date: 03 Apr 2018 Page 2 of 8

Test Results:

Test Part Description:

Specimen No. **SGS Sample ID Description**
SN1 CAN18-051647.001 Green "PCB"

Remarks:

(1) 1 mg/kg = 1 ppm = 0.0001%
(2) MDL = Method Detection Limit
(3) ND = Not Detected (< MDL)
(4) "-" = Not Regulated

RoHS Directive (EU) 2015/863 amending Annex II to Directive 2011/65/EU

Test Method: With reference to IEC 62321-4:2014+A1:2017, IEC 62321-5:2013, IEC 62321-7-2:2017, IEC 62321-6:2015 and IEC 62321-8:2017, analyzed by ICP-OES, UV-Vis and GC-MS.

Test Item(s)	Limit	Unit	MDL	Det
Cadmium (Cd)	100	mg/kg	2	ND
Lead (Pb)	1,000	mg/kg	2	9
Mercury (Hg)	1,000	mg/kg	2	ND
Hexavalent Chromium (CrVI)	1,000	mg/kg	8	ND
Sum of PBBs	1,000	mg/kg	-	ND
Monobromobiphenyl	-	mg/kg	5	ND
Dibromobiphenyl	-	mg/kg	5	ND
Tribromobiphenyl	-	mg/kg	5	ND
Tetrabromobiphenyl	-	mg/kg	5	ND
Pentabromobiphenyl	-	mg/kg	5	ND
Hexabromobiphenyl	-	mg/kg	5	ND
Heptabromobiphenyl	-	mg/kg	5	ND
Octabromobiphenyl	-	mg/kg	5	ND
Nonabromobiphenyl	-	mg/kg	5	ND
Decabromobiphenyl	-	mg/kg	5	ND
Sum of PBDEs	1,000	mg/kg	-	ND
Monobromodiphenyl ether	-	mg/kg	5	ND
Dibromodiphenyl ether	-	mg/kg	5	ND
Tribromodiphenyl ether	-	mg/kg	5	ND
Tetrabromodiphenyl ether	-	mg/kg	5	ND
Pentabromodiphenyl ether	-	mg/kg	5	ND



SGS Testing Laboratory (China) Ltd. 150001 | 100-00-010000 | 100-00-007010 | www.sgslab.com.cn
 中国 广州 德信楼 150001 检测实验室 10000 邮编: 150001 | 100-00-010000 | 100-00-007010 | www.sgslab.com.cn
 Member of the SGS Group (SGL) SGL

□.

5. □□ PCB□ □□□□ □□ □□□ □□□□□?

□□ □□ → □□ □□ □ → □□ □□ → □□ AOI → □□ □□ → □□ → □□ → □□ → PTH → □□ → □□ □□ □ → □□ □□ → □□ □□ → □□ AOI
→ □□ □□□ → □□ □□ → □□ □□ → □□□□ → E / T → □□ □□.