

O-leading PCB PCB PCB.

10 PCB PCB. PCB - PCB, PCB, PCB, PCB PCB MCPCB. PCB PCB PCB PCB PCB
 - 24 S / S, 48-96 PCB 4-8. (PCB PCB)

PCB .025 AVG, .020 MIN .. PCB PCB PCB

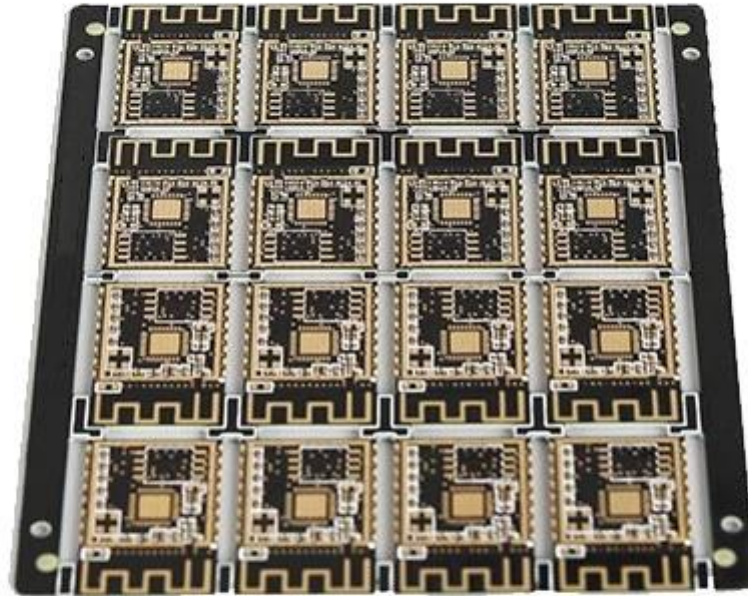
PCB PCB, 25 PC / bag, PCB PCB, PCB PCB PCB

PCB PCB PCB PCB : PCB pcb PCB

PCB

PCB P / N	PCB PCB PCB PCB PCB
PCB	4L
PCB	FR-4 TG170
PCB thk	1.6mm
PCB thk	1 / 1 / 1 / 1oz
PCB PCB PCB	0.3MM
PCB ()	98
PCB w / s	5 / 5
PCB PCB. Y / N (Tol %)	
PCB PCB	ENIG Au : 0.05-0.10UM
PCB PCB PCB	PCB / PCB
PCB PCB	PCB X (mm) : 21, PCB Y (mm) : 12
PCB PCB	PCB X (mm) : 90, PCB Y (mm) : 68, UPS : 16
PCB : PCB PCB	
PCB / PCB	CNC





www.o-leading.com



[pcb](#)







201726 201VZL430354 - Wiring, Printed - Component



ZPMV2.E490354
Wiring, Printed - Component

For enhanced search functionality, please visit UL's [online family of databases](#).
Click on a product designation for complete information.

Page Bottom

Wiring, Printed - Component

See General Information for Wiring, Printed - Components

O-LEADING SUPPLY CHAIN CO LIMITED 4190354

Fortune Building, Nanheng West Road
Room 1313
Huizhou, Guangdong 516211, CHINA

Type	Cond Width			SS/ DS/ Diam	Area	Solder		Flame	RoHS	C
	Min	Max	Min			Max	Temp			
Hub/Bayer (mass laminate) printed wiring boards.										
O-LEADING-401										
	0.2 (0.004)	0.3 (0.012)	34 (1.34)	D6	12.7 (0.5)	260	10	130	V-0	-
O-LEADING-407										
	0.08 (0.003)	0.2 (0.008)	17 (0.67)	D5	9.2 (0.4)	260	10	170	V-0	NI
Hub/Bayer printed wiring boards.										
O-LEADING-408										
	0.125 (0.005)	0.125 (0.005)	12 (0.47) min:1.35	D6	50.8 (2.0)	260	20	130	V-0	NI
Single layer printed wiring boards.										
O-LEADING-002										
	0.76 (0.015)	1.14 (0.045)	34 (1.34)	S5	19.1 (0.8)	260	10	105	V-0	NI
O-LEADING-003										
	0.38 (0.015)	1.14 (0.045)	34 (1.34)	S5	19.1 (0.8)	260	10	130	V-0	▲
O-LEADING-033										
	0.15 (0.006)	0.3 (0.012)	34 (1.34)	S5	25.4 (1.0)	260	10	120	V-0	NI
O-LEADING-205										
	0.1 (0.004)	0.3 (0.012)	34 (1.34)	D6	69.6 (2.7)	260	10	130	V-0	NI
O-LEADING-206										
	0.15 (0.006)	0.33 (0.013)	17 (0.67)	D5	69.6 (2.7)	260	10	130	V-0	NI

* - CTI marking is optional and may be marked on the printed wiring board.

Marking: Company name or file number and type designation. May be followed by a suffix to denote factory identification or burning test classification.
Last updated on 2017-01-27

Questions? [Print this page](#) [Terms of Use](#) [Page Top](#)

http://www.ul.com/ulcertification/201VZL430354/Wiring,Printed-Component



Test Report

No. CANEC1805164701

Date: 03 Apr 2018

Page 2 of 8

Test Results:

Test Part Description:

Specimen No. **SGS Sample ID** **Description**
SN1 CAN18-051647.001 Green "PCB"

Remarks:

- (1) 1 mg/kg = 1 ppm = 0.0001%
- (2) MDL = Method Detection Limit
- (3) ND = Not Detected (< MDL)
- (4) "-" = Not Regulated

RoHS Directive (EU) 2015/863 amending Annex II to Directive 2011/65/EU

Test Method: With reference to IEC 62321-4:2014+A1:2017, IEC62321-5:2013, IEC62321-7-2:2017, IEC 62321-6:2015 and IEC62321-8:2017, analyzed by ICP-OES, UV-Vis and GC-MS.

Test Item(s)	Limit	Unit	MDL	Det
Cadmium (Cd)	100	mg/kg	2	ND
Lead (Pb)	1,000	mg/kg	2	9
Mercury (Hg)	1,000	mg/kg	2	ND
Hexavalent Chromium (CrVI)	1,000	mg/kg	8	ND
Sum of PBBs	1,000	mg/kg	-	ND
Monobromobiphenyl	-	mg/kg	5	ND
Dibromobiphenyl	-	mg/kg	5	ND
Tribromobiphenyl	-	mg/kg	5	ND
Tetrabromobiphenyl	-	mg/kg	5	ND
Pentabromobiphenyl	-	mg/kg	5	ND
Hexabromobiphenyl	-	mg/kg	5	ND
Heptabromobiphenyl	-	mg/kg	5	ND
Octabromobiphenyl	-	mg/kg	5	ND
Nonabromobiphenyl	-	mg/kg	5	ND
Decabromobiphenyl	-	mg/kg	5	ND
Sum of PBDEs	1,000	mg/kg	-	ND
Monobromodiphenyl ether	-	mg/kg	5	ND
Dibromodiphenyl ether	-	mg/kg	5	ND
Tribromodiphenyl ether	-	mg/kg	5	ND
Tetrabromodiphenyl ether	-	mg/kg	5	ND
Pentabromodiphenyl ether	-	mg/kg	5	ND



SGS is pleased to announce the launch of its new RoHS testing service. This service is designed to help manufacturers and suppliers ensure compliance with the RoHS Directive (EU) 2011/65/EU and its amendments. The service includes testing for the presence of restricted substances in printed wiring boards (PWBs) and other electronic components. For more information, please contact your local SGS office or visit our website at www.sgsgroup.com.

Member of the SGS Group (SGL SA)

□□ & □□

□□ □□ □□	16 □ □□ OEM pcb □□ □□ □□
□□ □□ □□	7-12 □



□□□□ □□

1. O-Leading□ □□□ □□ □□□□□?

□□□ □□□ □□□ □□ □□ □□□□□.

1. □ □□□□□ ISO 9001 : 2008 □□□ □□ □□□ □□□□□.

2. □□ □□ □□□□□ □□□□□□ □□□□ □□

3.State-of-art □□□ □□ □ □□. □ : □□□ □□□, X □ □□, AOI (□□ □□ □□□) □ ICT (□□ □ □□□).

4. □□ □□ □□ □□□□□ □□ □ □□ □□ □□ □

5. □□□□ □□ □□ □ □□

2. O-Leading□ □□ □□□□ □□□ □□□□□?

□□ 10 □ □□ □□ □□□ (□ : □□, □□ □□)□ □□□ □ □, □ □ □□ □ □ □□□□□□. □□ □□ □□□□ □□ □□ 31 %□ □□□ □□□. □□ □□□□ □□ □ □□□□□. □□□□ □□□□ □□□□□□□□. □□ □□ □□, □□□□ □□ □ □□□ □□□ □□□ □□ □□□□ □□ □□□□. □□□□ □□□□ □□ □□□□ □□ □□□□ □□ □□□□ □□ □□□□.

□□□□ □□□□ □□ □□□□ □□□ □□ □ □ □□□ □□□□□ □□ □□□ □ □□□□.

3. O-Leading □□□□□□ □□ □□□ □□ □ □ □□□□?

□□□□ FR4, □ TG □ □□□ □□ □□, Rogers, Arlon, Telfon, □□□□ / □□ □□ □□, PI □

4. PCB □□□ □□□ □□□□ □□□□□?

Gerber 274-X □□□□ □□□□ □□□□ □□ □□ □□□□. □□ Cam350, CAD, Protel 99se, PADS, DXP □ Eagle□ □□ □ □ □□□

□.

5. □□ PCB□ □□□□ □□ □□□ □□□□□?

□□ □□ → □□ □□ □ → □□ □□ → □□ AOI → □□ □□ → □□ → □□ → □□ → PTH → □□ → □□ □□ □ → □□ □□ → □□ □□ → □□ AOI
→ □□ □□□ → □□ □□ → □□ □□ → □□□□ → E / T → □□ □□.