

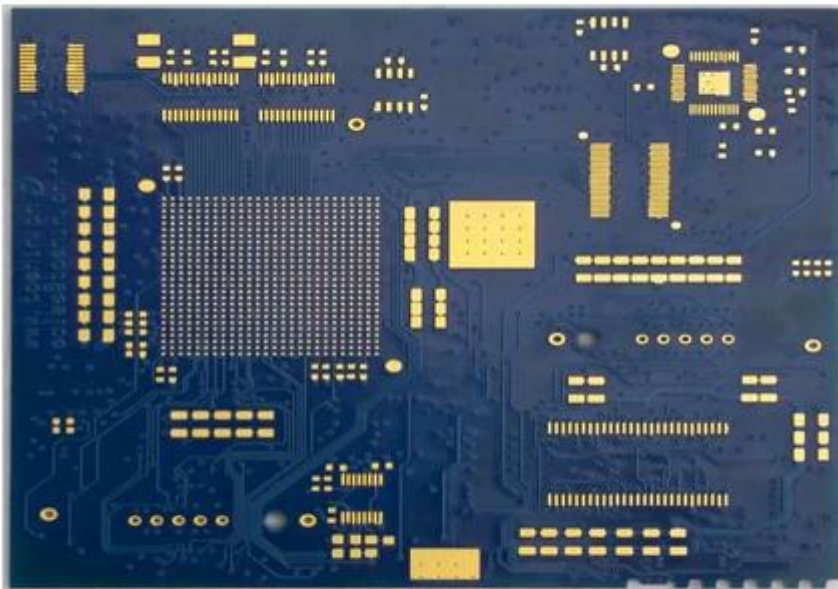
□□ □□ :
 □□□ □□ □□

□□□	□□, □□ (□□)	□□□	□ - □□
□□ □□	FR-4, □□□□	□□ □□	0.5oz ~ 5oz
Min. □□ □□	0.2mm	Min. □□ □	0.2mm
□□ □□	□□ □, OSP, □□ HASL	□□ □□	0.1-5mm
□□ □□	LED, □□□, □□□, □□□	□□□	□□□ □□ PCB
□□□	ISO9001, UL, RoHS, SGS	Q / CTN	10PCS-100PCS
□□	0.01kg ~ 5kg	MOQ	10pcs
□□ □□	□□ □□ pcb □□□□ pcca □□ □□	Min. □ □□	0.2mm
□□	□□□, □□□, □□, □□ .yellow	□□	\$ 0.1- \$ 10
□□	□□ □□ □□	□□	0.01m3-10m3

□□ & □□

□□ □□ □□	16 □ □□ OEM pcb □□ □□ □□
□□ □□ □□	7-12 □

O-LEADING
 To Be Reliable, To Be Valuable



www.o-leading.com

□□□

[MDI PCB □□ □□ □□, □□ □□ □□ □□ □□](#)

□□ □□

16 〇 〇 〇 OEM pcb 〇 〇 〇

〇	2014		2015 ~ 2016		2017 ~ 2018	
	〇	〇	〇	〇	〇	〇
〇 〇 〇	32	42	38 〇	44	42	48
〇 〇 〇 / 〇 〇 (μm)	50/50	40/45	40/45	40/40	35/40	35/35
〇 〇 〇 〇 〇 〇 (mm)	0.15	0.10	0.15	0.10	0.15	0.10
〇 〇 〇 PTH	14 : 1	16 : 1	16 : 1	18 : 1	18 : 1	20 : 1
N + C + N	4 + C + 4	5 + C + 5	5 + C + 5	6 + C + 6	5 + C + 5	6 + C + 6
〇 〇 〇 〇 〇 〇	5 + 2 + 5	6 + 2 + 6	5 + 2 + 5	6 + 2 + 6	5 + 2 + 5	6 + 2 + 6
〇 〇 〇 〇 〇	〇	-	〇	-	〇	-
Min. 〇 〇 〇 (〇 〇 〇) (μm)	50 〇	40	40	30	40	30
Min. 〇 〇 〇 〇 〇 (μm)	75	65	65	50 〇	50 〇	40
〇 〇 〇 〇 〇 〇 〇 / 〇 〇 〇	〇	-	〇	-	〇	-
〇 〇	FR4, Megtron, Nelco, Rogers, Heavy Copper 〇					
〇 〇 〇 〇 〇 〇 PCB	〇	-	〇	-	〇	-
〇 〇 〇	〇 〇 HASL, ENIG, OSP, 〇 〇 〇, 〇 〇 〇, 〇 〇 〇, 〇 〇 〇 〇, 〇 〇 〇 〇 〇, 〇 〇 〇 〇 〇, 〇 〇 〇 〇 〇, 〇 〇 〇					