

O-leading PCB PCB PCB PCB.

10 10 PCB PCB. PCB - PCB, PCB, PCB, PCB MCPCB. PCB PCB PCB PCB PCB
 PCB - 24 S / S, 48-96 PCB 4-8 PCB.

([PCB PCB PCB PCB](#))

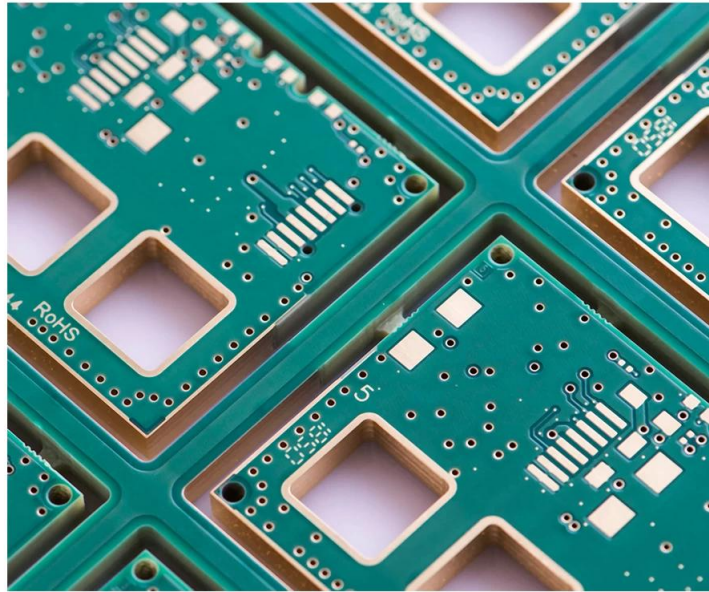
PCB .025 AVG, .020 MIN .. PCB PCB PCB

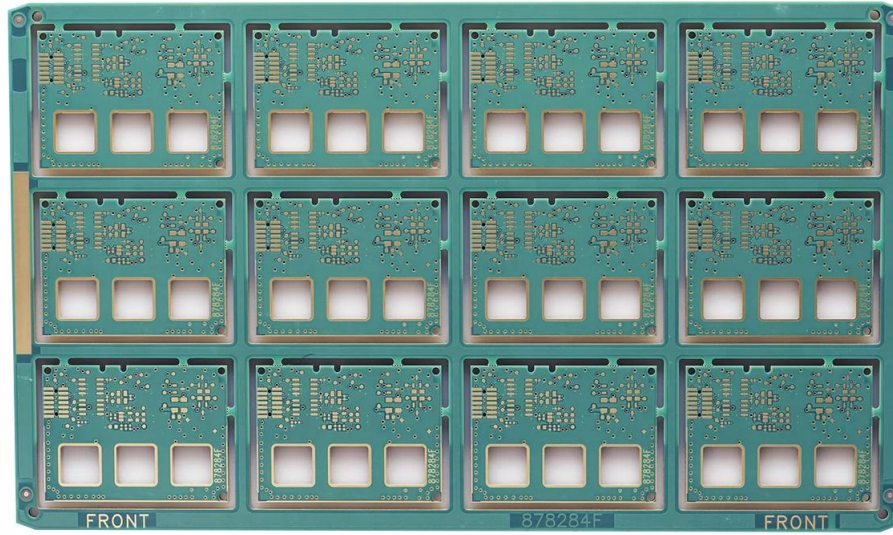
PCB PCB, 25 PCS / bag, PCB PCB, PCB PCB PCB

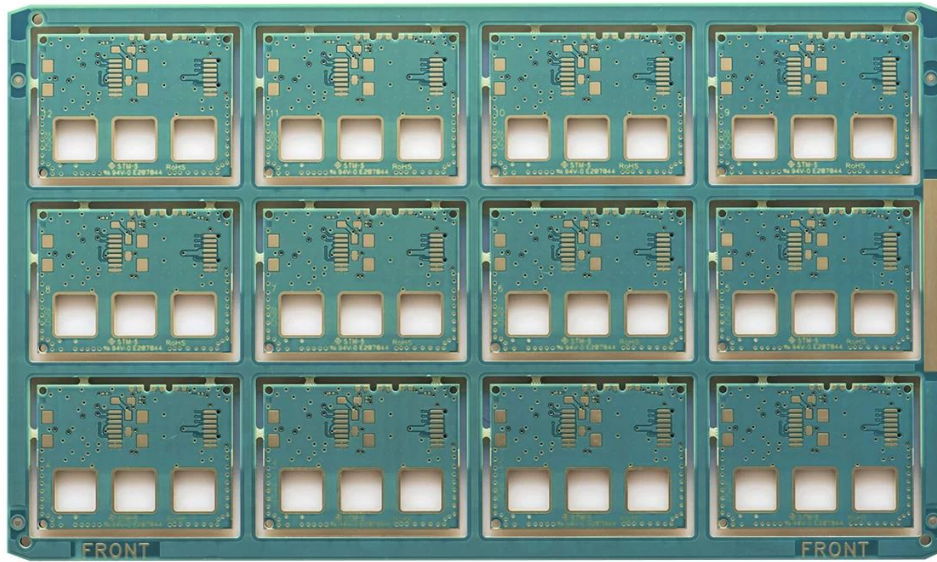
PCB PCB PCB PCB : [PCB PCB PCB PCB](#)

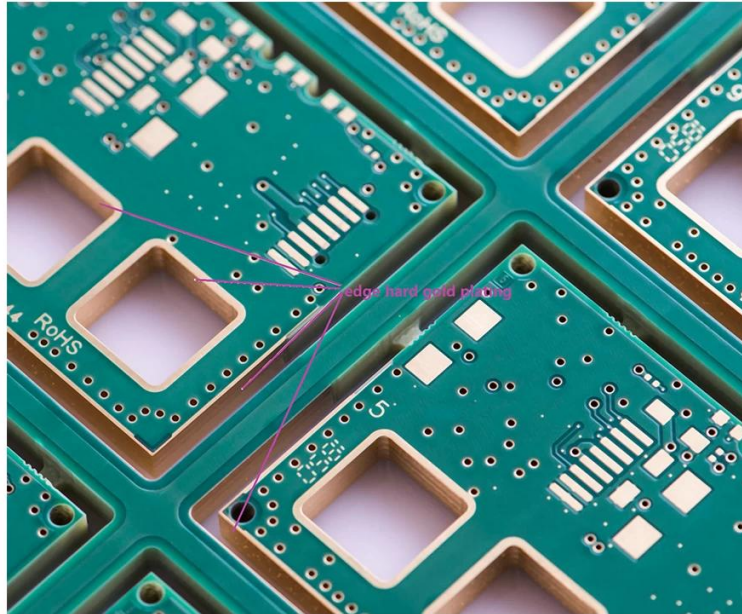


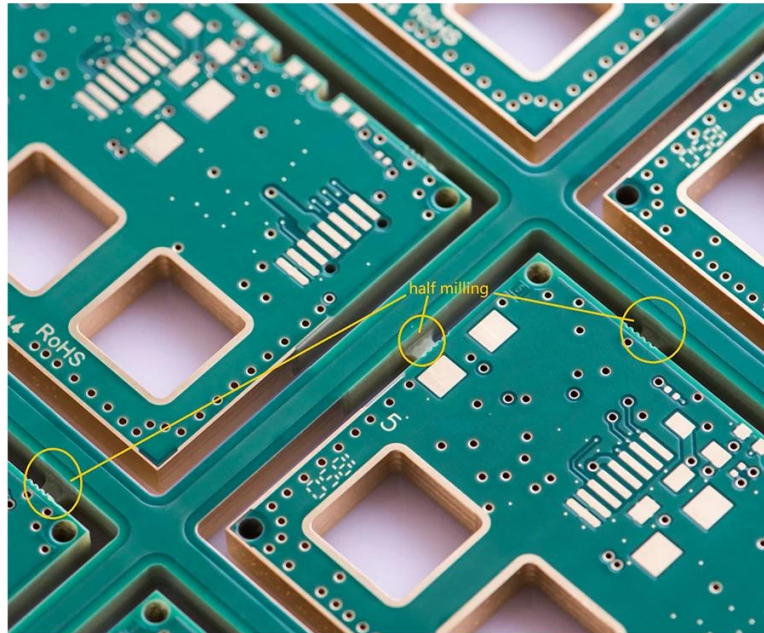
PCB P / N	878284-E
PCB PCB	6L HDI
PCB	FR-4 TG180
Board thk	3.80mm
PCB thk	1 / 1 / 1 / 1 / 1 / 1 / 1oz
PCB PCB PCB	0.1MM
PCB (PCB)	725
PCB w / PCB	8 / 8 PCB
PCB PCB. Y / N (Tol %)	PCB
PCB PCB : ENIG Au	0.075-0.125UM
PCB PCB PCB	PCB PCB / PCB
PCB PCB PCB	PCB X (mm) : 51; PCB Y (mm) : 37.7
Panelisation	PCB X (mm) : 244, PCB Y (mm) : 145, UPS PCB : 12
PCB : PCB PCB PCB	PCB
PCB / PCB	CNC











www.o-leading.com

PCB 0000 00 00 00 00

00 0







201726 201VZL430354 - Wiring, Printed - Component

UL ONLINE CERTIFICATIONS DIRECTORY

ZPMV2.E490354
Wiring, Printed - Component

For enhanced search functionality, please visit [UL's IoT Family of Databases](#).
Click on a product designation for complete information.
[Page Bottom](#)

Wiring, Printed - Component

[See General Information for Wiring, Printed - Components](#)

O-LEADING SUPPLY CHAIN CO LIMITED 4190354
Fortune Building, Nanheng West Road
Room 1313
Huizhou, Guangdong 516211, CHINA

	Cond Width			SS/ DS/ Diam	Area	Solder Limits	Dper	Temp	Flame	RoHS	C
	Min	Max	Max								
	Min	Edge	Thk	DS/	Area	Solder	Dper	Temp	Flame	UL796	T
Typc	max(in)	mm(in)	mic(mil)	DS0	mm(in)	C	sec	C	Class	DSR	I
Hull Bayer (mass laminate) printed wiring boards.											
O-LEADING-401											
	0.2 (0.004)	0.3 (0.012)	34 (1.34)	D6	12.7 (0.5)	260	10	130	V-0	-	-
O-LEADING-407											
	0.08 (0.003)	0.2 (0.008)	17 (0.67)	D5	9.2 (0.4)	260	10	170	V-0	NI	-
Hull Bayer printed wiring boards.											
O-LEADING-408											
	0.125 (0.005)	0.125 (0.005)	12 (0.47) min:1.35	D6	50.8 (2.0)	260	20	130	V-0	NI	1
Single layer printed wiring boards.											
O-LEADING-002											
	0.76 (0.015)	1.14 (0.045)	34 (1.34)	S5	19.1 (0.8)	260	10	105	V-0	NI	-
O-LEADING-003											
	0.38 (0.015)	1.14 (0.045)	34 (1.34)	S5	19.1 (0.8)	260	10	130	V-0	▲	-
O-LEADING-033											
	0.15 (0.006)	0.3 (0.012)	34 (1.34)	S5	25.4 (1.0)	260	10	120	V-0	NI	-
O-LEADING-205											
	0.1 (0.004)	0.3 (0.012)	34 (1.34)	D6	69.6 (2.7)	260	10	130	V-0	NI	-
O-LEADING-206											
	0.15 (0.006)	0.33 (0.013)	17 (0.67)	D5	69.6 (2.7)	260	10	130	V-0	NI	-

* - CTI marking is optional and may be marked on the printed wiring board.

Marking: Company name or file number and type designation. May be followed by a suffix to denote factory identification or burning test classification.
Last updated on 2017-01-27

Questions? [Print this page](#) [Terms of Use](#) [Page Top](#)

[http://www.ul.com/portal/ulcert/ulcert.nsf/\(open\)?open=ZPMV2.E490354&doc=ZPMV2.E490354-Wiring,Printed-Component-10](#)



Test Report No. CANEC1805164701 Date: 03 Apr 2018 Page 2 of 8

Test Results:

Test Part Description:

Specimen No. **SGS Sample ID** **Description**
S/N1 CAN18-051647.001 Green "PCB"

Remarks:

(1) 1 mg/kg = 1 ppm = 0.0001%
(2) MDL = Method Detection Limit
(3) ND = Not Detected (< MDL)
(4) "-" = Not Regulated

RoHS Directive (EU) 2015/863 amending Annex II to Directive 2011/65/EU

Test Method: With reference to IEC 62321-4:2014+A1:2017, IEC 62321-5:2013, IEC 62321-7-2:2017, IEC 62321-6:2015 and IEC 62321-8:2017, analyzed by ICP-OES, UV-Vis and GC-MS.

Test Item(s)	Limit	Unit	MDL	Det
Cadmium (Cd)	100	mg/kg	2	ND
Lead (Pb)	1,000	mg/kg	2	9
Mercury (Hg)	1,000	mg/kg	2	ND
Hexavalent Chromium (CrVI)	1,000	mg/kg	8	ND
Sum of PBBs	1,000	mg/kg	-	ND
Monobromobiphenyl	-	mg/kg	5	ND
Dibromobiphenyl	-	mg/kg	5	ND
Tribromobiphenyl	-	mg/kg	5	ND
Tetrabromobiphenyl	-	mg/kg	5	ND
Pentabromobiphenyl	-	mg/kg	5	ND
Hexabromobiphenyl	-	mg/kg	5	ND
Heptabromobiphenyl	-	mg/kg	5	ND
Octabromobiphenyl	-	mg/kg	5	ND
Nonabromobiphenyl	-	mg/kg	5	ND
Decabromobiphenyl	-	mg/kg	5	ND
Sum of PBDEs	1,000	mg/kg	-	ND
Monobromodiphenyl ether	-	mg/kg	5	ND
Dibromodiphenyl ether	-	mg/kg	5	ND
Tribromodiphenyl ether	-	mg/kg	5	ND
Tetrabromodiphenyl ether	-	mg/kg	5	ND
Pentabromodiphenyl ether	-	mg/kg	5	ND

SGS logo and contact information for the testing laboratory.

Member of the SGS Group (SGS SA)

□□ & □□

□□ □□ □□	16 □ □□ OEM pcb □□ □□ □□
□□ □□ □□	7-12 □



□□□□ □□

1. O-Leading□ □□□ □□ □□□□□?

□□□ □□□ □□□ □□ □□□□□.

- 1.□ □□□□□ ISO 9001 : 2008 □□□ □□ □□□ □□□□□.
2. □□ □□ □□□□□ □□□□□ □□□ □□
- 3.State-of-art □□□ □□ □ □□□. □ : □□□ □□□, X □ □□, AOI (□□ □□ □□□) □ ICT (□□ □ □□□).
4. □□ □□ □□ □□□□□ □□ □□ □□ □□ □
5. □□□□ □□ □□ □ □□

2. O-Leading□ □□ □□□□ □□ □□□□□?

□□ 10 □ □□ □□ □□□ (□ : □□, □□ □□)□ □□□ □ □□, □ □ □□ □ □ □□□□□□. □□ □□ □□□□ □□ □□ 31 %□ □□ □□□ □□□. □□ □ □□□ □□ □□□□□□. □□□ O-Leading□ □□□ □□□□□ □□□□□□□□. □□ □□ □□□, □□□ □□ □ □□□ □□ □□ □□□ □□□ □□ □□□ □□ □□□ □□□ □□□ □□□□□□ □□ □□□ □□□□ □□ □□□ □□□□ □□ □□□□□□ □□ □□□ □□□□□.

3. O-Leading □□□□□□ □□ □□□ □□ □ □ □□□□□?

□□□□ FR4, □□ TG □ □□□ □□ □□, Rogers, Arlon, Telfon, □□□□ / □□ □□ □□, PI □

4. PCB 圖檔 輸出 圖檔 圖檔圖?

Gerber 274-X 圖檔 圖檔 圖檔 圖 圖 圖檔. 圖 Cam350, CAD, Protel 99se, PADS, DXP 圖 Eagle 圖 圖 圖 圖檔.

5. 圖 PCB 圖檔 圖 圖 圖檔圖?

圖 圖 → 圖 圖 圖 → 圖 圖 → 圖 AOI → 圖 圖 → 圖 → 圖 → 圖 → PTH → 圖 → 圖 圖 圖 → 圖 圖 → 圖 圖 → 圖
圖 AOI → 圖 圖 → 圖 圖 → 圖 圖 → 圖 → E / T → 圖 圖.