

O-leading □ □ □ □ □.

□□ 10 □ □□ □□ □ □ PCB □□□□□□. □□ □□ - □□, □□ □□, □□ PCB, □□□ PCB □ MCPCB. □□□ □□ □□ □□ □□ □□ □ □ □□□ - 24 □□ S / S, 48-96 □□ □□ 4-8 □.

□□ □□□ □ □□ .025 AVG, .020 MIN .. □□ □□□□ □□ □ □□□□

□□ □□□ □□ □□, 25 PC / bag, □□□ □□□ □□, □□ □□ □□□ □□□ □□

□□ □□

□□ □□□ □ □□ .025 AVG, .020 MIN .. □□ □□□□ □□ □ □□□□

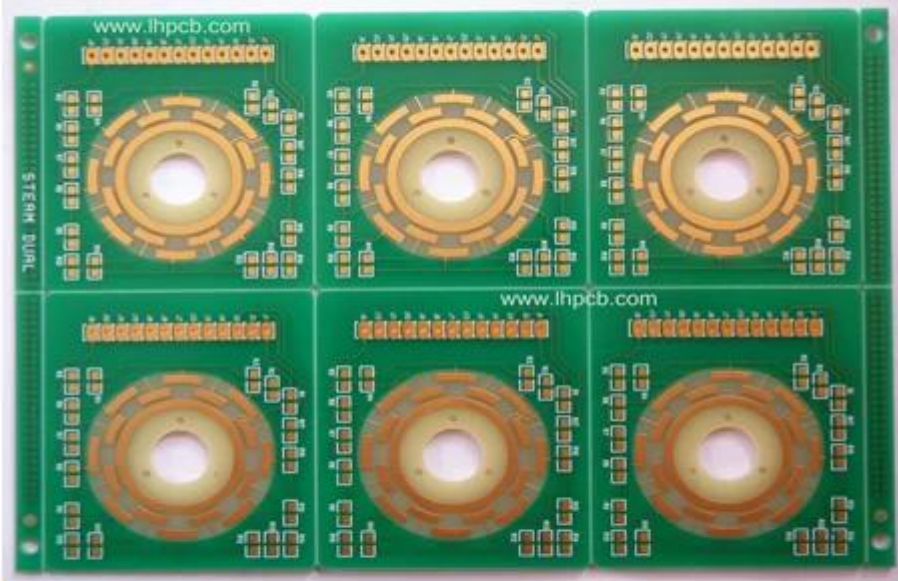
• □□ □□ □□ : ENIG, □□ □ □□ : 4um, □□□□ : Tol : +/- 7 %, □□ □□ □□□□ □□□ +/- 20hm □ □□□□ □□□□□. Back drill, 7 □ □□.

□□ □□□ □□ □□, 25 PC / bag, □□□ □□□ □□, □□ □□ □□□ □□□ □□

□□ □□

Lyr	Image	Foil	Flame
COMP		0.5oz	Foil 1/2oz
			R-5670(G) 3313 RC54%
L2		0.5oz	R-5775(G) 0.150mm H/H 37''*49''(1080*2)(RTF)
L3		0.5oz	R-5670(G) 1078 RC68%
			R-5670(G) 1035 RC70%
L4		0.5oz	R-5775(G) 0.150mm H/H 37''*49''(1080*2)(RTF)
L5		0.5oz	R-5670(G) 1078 RC68%
			R-5670(G) 1035 RC70%
L6		0.5oz	R-5775(G) 0.150mm H/H 37''*49''(1080*2)(RTF)
L7		0.5oz	R-5670(G) 1078 RC68%
			R-5670(G) 1035 RC70%
L8		0.5oz	R-5775(G) 0.140mm H/2 37''*49''(1078*2)(RTF)
L9		2oz	R-5670(G) 2116 RC54%
			R-5670(G) 2116 RC54%
			R-5670(G) 2116 RC54%
L10		2oz	R-5775(G) 0.140mm H/2 37''*49''(1078*2)(RTF)
L11		0.5oz	R-5670(G) 1035 RC70%
			R-5670(G) 1078 RC68%
L12		0.5oz	R-5775(G) 0.150mm H/H 37''*49''(1080*2)(RTF)
L13		0.5oz	R-5670(G) 1035 RC70%
			R-5670(G) 1078 RC68%
L14		0.5oz	R-5775(G) 0.150mm H/H 37''*49''(1080*2)(RTF)
L15		0.5oz	R-5670(G) 1035 RC70%
			R-5670(G) 1078 RC68%
L16		0.5oz	R-5775(G) 0.150mm H/H 37''*49''(1080*2)(RTF)
L17		0.5oz	R-5670(G) 3313 RC54%
SOLD		0.5oz	Foil 1/2oz

O-LEADING
To Be Reliable, To Be Valuable



www.o-leading.com

O-LEADING
To Be Reliable, To Be Valuable



www.o-leading.com



www.o-leading.com

[HDI pcb 00-00-00, 00 pcb 00](#)









QUALITY MANAGEMENT SYSTEM CERTIFICATE

Certificate No: 16118Q10347R05

We hereby certify that
O-LEADING SUPPLY CHAIN(HK) CO.,LIMITED
 Credit No: 61691591-000-07-17-2
 Registration Add: ROOM 603D 6/F HANG PONT COMMERCIAL BUILDING, 31 TONKIN ST. CHEUNG SHA WAN, K.L. HK
 Business Add: 1313 Floor 13 Fortune Building, Danshui Town Huiyang District, Huizhou, Guangdong, China

Has implemented and maintains a **Quality Management System**
 Which fulfills the requirements of the following standards
 GB/T19001-2016 idt ISO9001:2015

Scope of certification
 Sales of printed circuit boards

Initial Issuance period: February 27, 2018
 This certificate is valid during: February 27, 2018 -- February 26, 2021
 This certificate is invalid without CICC qualified label in the following period

First supervision and audit	Qualified mark	Second supervision and audit	Qualified mark
-----------------------------	----------------	------------------------------	----------------

The certification registration scope does not include those products/services scopes which fail to be covered by the relevant effective administrative permission and qualification permission required by the state. The effectiveness of this certificate shall be evaluated by annual surveillance audit of CICC. The certificate shall be valid when used together with the surveillance audit conclusion. The related information of this certification can be searched at the public website of website www.cicc.com.cn.

201726 201VZL430354 - Wiring, Printed - Component

UL ONLINE CERTIFICATIONS DIRECTORY

ZPMV2.E490354
Wiring, Printed - Component

For enhanced search functionality, please visit UL's [UL Product Databases](#). Click on a product designation for complete information.
[Page Bottom](#)

Wiring, Printed - Component

See General Information for Wiring, Printed - Components

O-LEADING SUPPLY CHAIN CO LIMITED 4190354
 Fortune Building, Nanheng West Road
 Room 1313
 Huizhou, Guangdong 516211, CHINA

		Cond Width			Max			Max				
	Min	Cond	SS/	Area	Solder	Dper		Flame	RoHS	C		
	Edge	Thk	DS/	Diam	Limits	Temp		Class	DSR	I		
Type	max(in)	mm(in)	mic(mil)	DSO	mm(in)	C	sec	C				
Multi-layer (mass laminate) printed wiring boards.												
O-LEADING-401												
	0.2 (0.004)	0.3 (0.012)	34 (1.34)	D6	12.7 (0.5)	260	10	130	V-0	-	-	
O-LEADING-407												
	0.08 (0.003)	0.2 (0.008)	17 (0.67)	D5	9.2 (0.4)	260	10	130	V-0	NI	-	
Multi-layer printed wiring boards.												
O-LEADING-408												
	0.125 (0.005)	0.125 (0.005)	12 (0.47) mil-135	D6	50.8 (2.0)	260	20	130	V-0	NI	1	
Single layer printed wiring boards.												
O-LEADING-002												
	0.76 (0.015)	1.14 (0.045)	34 (1.34)	S5	19.1 (0.8)	260	10	105	V-0	NI	-	
O-LEADING-003												
	0.38 (0.015)	1.14 (0.045)	34 (1.34)	S5	19.1 (0.8)	260	10	130	V-0	▲	-	
O-LEADING-033												
	0.15 (0.006)	0.3 (0.012)	34 (1.34)	S5	25.4 (1.0)	260	10	120	V-0	NI	-	
O-LEADING-205												
	0.1 (0.004)	0.3 (0.012)	34 (1.34)	D6	69.6 (2.7)	260	10	130	V-0	NI	-	
O-LEADING-206												
	0.15 (0.006)	0.33 (0.013)	17 (0.67)	D5	69.6 (2.7)	260	10	130	V-0	NI	-	

* - CTI marking is optional and may be marked on the printed wiring board.

Marking: Company name or file number and type designation. May be followed by a suffix to denote factory identification or burning test classification.
 Last updated on 2017-01-27

Questions? [Print this page](#) [Terms of Use](#) [Page Top](#)

SGS

Test Report No. CANEC1805164701 Date: 03 Apr 2018 Page 2 of 8

Test Results:
 Test Part Description:

Specimen No.	SGS Sample ID	Description
SN1	CAN18-051647.001	Green "PCB"

- Remarks:
- (1) 1 mg/kg = 1 ppm = 0.0001%
 - (2) MDL = Method Detection Limit
 - (3) ND = Not Detected (< MDL)
 - (4) "-" = Not Regulated

RoHS Directive (EU) 2015/863 amending Annex II to Directive 2011/65/EU

Test Method: With reference to IEC 62321-4:2014+A1:2017, IEC 62321-5:2013, IEC 62321-7-2:2017, IEC 62321-6:2015 and IEC 62321-8:2017, analyzed by ICP-OES, UV-Vis and GC-MS.

Test Items	Limit	Unit	MDL	Det
Cadmium (Cd)	100	mg/kg	2	ND
Lead (Pb)	1,000	mg/kg	2	9
Mercury (Hg)	1,000	mg/kg	2	ND
Hexavalent Chromium (CrVI)	1,000	mg/kg	8	ND
Sum of PBBs	1,000	mg/kg	-	ND
Monobromobiphenyl	-	mg/kg	5	ND
Dibromobiphenyl	-	mg/kg	5	ND
Tribromobiphenyl	-	mg/kg	5	ND
Tetrabromobiphenyl	-	mg/kg	5	ND
Pentabromobiphenyl	-	mg/kg	5	ND
Hexabromobiphenyl	-	mg/kg	5	ND
Heptabromobiphenyl	-	mg/kg	5	ND
Octabromobiphenyl	-	mg/kg	5	ND
Nonabromobiphenyl	-	mg/kg	5	ND
Decabromobiphenyl	-	mg/kg	5	ND
Sum of PBDEs	1,000	mg/kg	-	ND
Monobromodiphenyl ether	-	mg/kg	5	ND
Dibromodiphenyl ether	-	mg/kg	5	ND
Tribromodiphenyl ether	-	mg/kg	5	ND
Tetrabromodiphenyl ether	-	mg/kg	5	ND
Pentabromodiphenyl ether	-	mg/kg	5	ND

We warrant that the information on this report is true and correct as far as the information is concerned. We warrant that the information is true and correct as far as the information is concerned. We warrant that the information is true and correct as far as the information is concerned. We warrant that the information is true and correct as far as the information is concerned.

SGS Testing Services Ltd. 100, Canton Road, Hong Kong. Tel: +852 2300 1788. Fax: +852 2300 1789. Email: info@sgs.com.hk

□□ & □□

□□ □□ □□	16 □ □□ OEM pcb □□ □□ □□
□□ □□ □□	7-12 □

(□□ □□ □□ □□ □□)



□□□□ □□

1. O-Leading□ □□□ □□□□ □□□□?

□□□□ □□□□ □□□□ □□ □□□□□□.

1. □ □□□□□ ISO 9001 : 2008 □□□□ □□ □□□□ □□□□□□.
2. □□ □□ □□□□□□ □□□□□□ □□□□ □□
3. State-of-art □□□□ □□ □ □□□. □ : □□□□ □□□□, X □ □□, AOI (□□ □□ □□□□) □ ICT (□□ □ □□□).
4. □□ □□ □□ □□□□□□ □□ □ □□ □□ □□ □□
5. □□□□ □□ □□ □ □□

2. O-Leading□ □□ □□□□ □□□□ □□□□?

□□ 10 □ □□ □□ □□□□ (□ : □□, □□ □□) □□□□ □ □□, □ □ □□ □ □ □□□□□□. □□ □□ □□□□ □□ □□ 31 % □□□□ □□□□. □□ □□□□ □□ □□□□□□. □□□□ O-Leading□ □□□ □□□□□□ □□□□□□. □□ □□ □□, □□□□ □□ □ □□□ □□□□ □□ □□□□ □□ □□□□. □ □□ □□□ □□□□ □□□□ □□ □□□□ □□ □□□□ □□□□. □□□□ □□□□ □□ □□□□ □□□□ □□ □ □ □□□ □□□□ □□ □□□□ □ □□□□.

3. O-Leading □□□□□□ □□ □□□□ □□ □ □□□□?

□□□□ FR4, □ TG □ □□□ □□ □□ □□, Rogers, Arlon, Telfon, □□□□ / □□ □□ □□, PI □

4. PCB □□□□ □□□□ □□□□ □□□□?

Gerber 274-X 圖檔 圖檔 圖檔 圖 圖 圖檔. 圖 Cam350, CAD, Protel 99se, PADS, DXP 圖 Eagle 圖 圖 圖

5. 圖 PCB 圖 圖 圖 圖 圖 圖 圖?

圖 圖 → 圖 圖 圖 → 圖 圖 → 圖 AOI → 圖 圖 → 圖 → 圖 → 圖 → PTH → 圖 → 圖 圖 圖 → 圖 圖 → 圖 圖 → 圖
圖 AOI → 圖 圖 圖 → 圖 圖 → 圖 圖 → 圖 圖 → E / T → 圖 圖.