

# O-leading

10 PCB PCB MCPCB 24 S / S 48 96  
 4 8

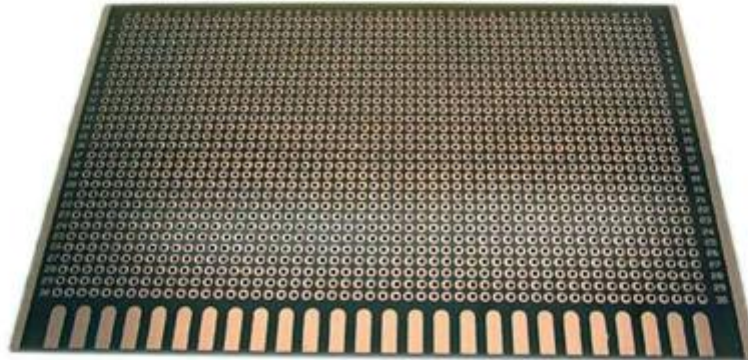
.025 AVG .020

25 PCS /

PCB

## 

PCB P / N	LE-150
	1L
THK	3.2mm
THK	1
	/
	/
w / s	/
Y / N	N
	ENIG Au 0.05um
	X mm 27; Y mm 45
	X mm 27; Y mm 135; UPS 3
	N
	CNC +



[www.o-leading.com](http://www.o-leading.com)

PCB











**QUALITY MANAGEMENT SYSTEM CERTIFICATE**

Certificate No: 16118Q10347R05

**We hereby certify that**

**O-LEADING SUPPLY CHAIN(HK) CO.,LIMITED**

Credit No: 61691591-000-07-17-2

Registration Add: ROOM 603D 6/F HANG PONT COMMERCIAL BUILDING, 31 TONKIN ST. CHEUNG SHA WAN, K.L. HK

Business Add: 1313 Floor 13 Fortune Building, Danshiu Town Huiyang District, Huizhou, Guangdong, China

Has implemented and maintains a **Quality Management System** Which fulfills the requirements of the following standards  
GB/T19001-2016 idt ISO9001:2015

**Scope of certification**  
Sales of printed circuit boards

Initial Issuance period: February 27, 2018  
This certificate is valid during: February 27, 2018 -- February 26, 2021  
This certificate is invalid without CICC qualified label in the following period

First supervision and audit	Qualified mark	Second supervision and audit	Qualified mark
-----------------------------	----------------	------------------------------	----------------

The certification registration scope shall include those production services scope which fall to be covered by the relevant effective administrative permission and qualification permission required by the state. The effectiveness of this certificate shall be evaluated by annual surveillance audit of CICC. The certificate shall be valid when used together with the surveillance audit conclusion. The related information of this certification can be searched at the public website of company www.cicc.com.cn.






201726 ZPMV2.E490354 - Wiring, Printed - Component

 **ONLINE CERTIFICATIONS DIRECTORY**

**ZPMV2.E490354**  
**Wiring, Printed - Component**

For enhanced search functionality, please visit UL's [QPL Family of Databases](#). Click on a product designation for complete information.

[Page Bottom](#)

**Wiring, Printed - Component**

See General Information for Wiring, Printed - Components

**O-LEADING SUPPLY CHAIN CO LIMITED** E490354

Fortune Building, Nanheng West Road  
Room 1313  
Huizhou, Guangdong 516211, CHINA


	Cond Width			SS/ DS/	Area Diam	Solder		Diper		Flame	RoHS	C
	Min	Min	Cond			Limits	Temp	Class	DSR			
Min	Edge	Thk	DS/	Diam	Temp	Class	DSR	DSR	DSR	DSR	DSR	DSR
Typ	max(in)	mm(in)	mic(mil)	DSO	max(in)	C	sec	C	Class	DSR	DSR	DSR
<b>Multi-layer (mass laminate) printed wiring boards.</b>												
<b>O-LEADING-401</b>												
	0.1 (0.004)	0.3 (0.012)	34 (1.34)	D6	12.7 (0.5)	260	10	130	V-0	-	-	-
<b>O-LEADING-407</b>												
	0.08 (0.003)	0.2 (0.008)	17 (0.67)	D5	9.2 (0.4)	260	10	130	V-0	NI	-	-
<b>Multi-layer printed wiring boards.</b>												
<b>O-LEADING-408</b>												
	0.125 (0.005)	0.125 (0.005)	12 (0.47)	D6	50.8 (2.0)	260	20	130	V-0	NI	-	-
<b>Single layer printed wiring boards.</b>												
<b>O-LEADING-002</b>												
	0.76 (0.015)	1.14 (0.045)	34 (1.34)	D5	19.1 (0.8)	260	10	105	V-0	NI	-	-
<b>O-LEADING-003</b>												
	0.38 (0.015)	1.14 (0.045)	34 (1.34)	D5	19.1 (0.8)	260	10	130	V-0	▲	-	-
<b>O-LEADING-033</b>												
	0.15 (0.006)	0.3 (0.012)	34 (1.34)	D5	25.4 (1.0)	260	10	120	V-0	NI	-	-
<b>O-LEADING-205</b>												
	0.1 (0.004)	0.3 (0.012)	34 (1.34)	D6	69.6 (2.7)	260	10	130	V-0	NI	-	-
<b>O-LEADING-206</b>												
	0.15 (0.006)	0.33 (0.013)	17 (0.67)	D5	69.6 (2.7)	260	10	130	V-0	NI	-	-

\* - CTI marking is optional and may be marked on the printed wiring board.

Marking: Company name or file number and type designation. May be followed by a suffix to denote factory identification or burning test classification.  
Last updated on 2017-01-27

Questions? [Print this page](#) [Terms of Use](#) [Page Top](#)

http://www.ul.com/qpl/qpl.html?test=60767&test=60767&test=ZPMV2.E490354 - Wiring, Printed - Component - 10



**Test Report** No. CAVEC1805164701 Date: 03 Apr 2018 Page 2 of 8

Test Results:

**Test Part Description:**

Specimen No.	SGS Sample ID	Description
SN1	CAN18-051647.001	Green "PCB"


Remarks:

- (1) 1 mg/kg = 1 ppm = 0.0001%
- (2) MDL = Method Detection Limit
- (3) ND = Not Detected (< MDL)
- (4) "-" = Not Regulated

**RoHS Directive (EU) 2015/863 amending Annex II to Directive 2011/65/EU**

Test Method: With reference to IEC 62321-4:2014+A1:2017, IEC 62321-5:2013, IEC 62321-7-2:2017, IEC 62321-6:2015 and IEC 62321-8:2017, analyzed by ICP-OES, UV-Vis and GC-MS.

Test Item(s)	Limit	Unit	MDL	Det
Cadmium (Cd)	100	mg/kg	2	ND
Lead (Pb)	1,000	mg/kg	2	9
Mercury (Hg)	1,000	mg/kg	2	ND
Hexavalent Chromium (CrVI)	1,000	mg/kg	8	ND
Sum of PBBs	1,000	mg/kg	-	ND
Mono-bromobiphenyl	-	mg/kg	5	ND
Dibromobiphenyl	-	mg/kg	5	ND
Tribromobiphenyl	-	mg/kg	5	ND
Tetrabromobiphenyl	-	mg/kg	5	ND
Pentabromobiphenyl	-	mg/kg	5	ND
Hexabromobiphenyl	-	mg/kg	5	ND
Heptabromobiphenyl	-	mg/kg	5	ND
Octabromobiphenyl	-	mg/kg	5	ND
Nonabromobiphenyl	-	mg/kg	5	ND
Decabromobiphenyl	-	mg/kg	5	ND
Sum of PBDEs	1,000	mg/kg	-	ND
Mono-bromodiphenyl ether	-	mg/kg	5	ND
Dibromodiphenyl ether	-	mg/kg	5	ND
Tribromodiphenyl ether	-	mg/kg	5	ND
Tetrabromodiphenyl ether	-	mg/kg	5	ND
Pentabromodiphenyl ether	-	mg/kg	5	ND

 SGS is pleased to announce that it has been awarded the ISO 9001 certification for its Quality Management System. This certification is a testament to the company's commitment to excellence in quality management and its dedication to providing high-quality services to its customers. The certification is valid from 2018 to 2021.

Member of the SGS Group (SGL SA)



