

O

10 PCB - PCB MCPCB
 - 24 S / S 48-96 4-8

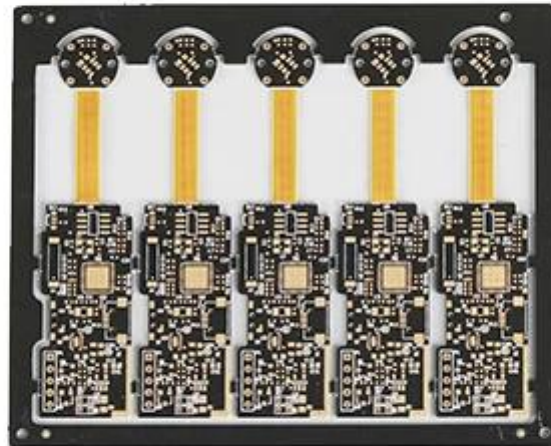
.025 AVG .020

25 /

OEM

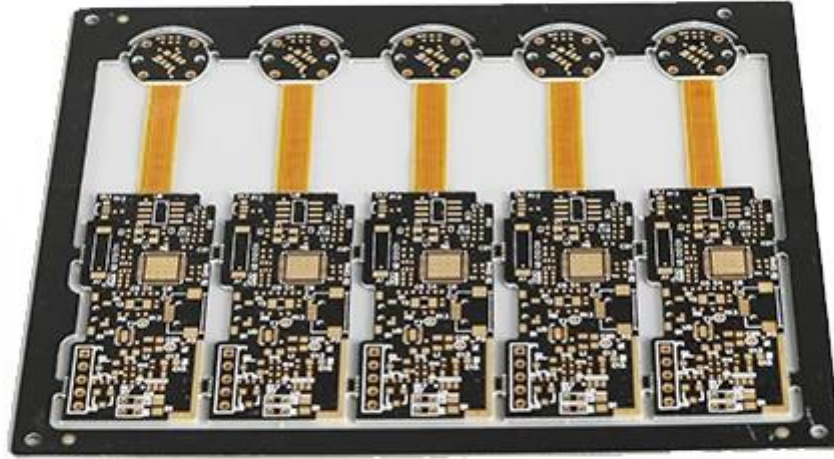
O

PCB P / N	ENIG PCB
	4L 2L + 2L
	FR-4 TG150
k	0.80mm
THK	1/1/1
	0.30mm
	251
w / s	5/6
Y / N Tol	N
	Au 0.05-0.10UM
	X mm 18.6 Y mm 92.2
	X mm 115; Y mm 106.2; UPS 5
	N
	CNC



www.o-leading.com





www.o-leading.com









QUALITY MANAGEMENT SYSTEM CERTIFICATE

Certificate No: 16118Q10347R05

We hereby certify that
O-LEADING SUPPLY CHAIN(HK) CO.,LIMITED
 Credit No: 61691591-000-07-17-2
 Registration Add: ROOM 603D 6/F HANG PONT COMMERCIAL BUILDING,31 TONKIN ST,CHEUNG SHA WAN,KL,HK
 Business Add:1313 Floor 13, Fortune Building,DanShui Town,Huiyang District, Huizhou, Guangdong, China

Has implemented and maintains a **Quality Management System** Which fulfills the requirements of the following standards
 GB/T19001-2016 idt ISO9001:2015

Scope of certification
 Sales of printed circuit boards

Initial Issuance period: February 27, 2018
 This certificate is valid during: February 27, 2018 -- February 26, 2021
 This certificate is invalid without CICC qualified label in the following period

First supervision and audit	Qualified mark	Second supervision and audit	Qualified mark
-----------------------------	----------------	------------------------------	----------------

The certification registration scope does't include those products/services scopes which fail to be covered by the relevant effective administrative permission and qualification permission required by the state. The effectiveness of this certificate shall be evaluated by annual surveillance audit of CICC. The certificate shall be valid when used together with the surveillance audit conclusion. The related information of this certification can be searched at the public website of company www.cicc.com.cn.

CICC IAF CNAS

201726 201VZL430354 - Wiring, Printed - Component



ZPMV2.E490354
 Wiring, Printed - Component

For enhanced search functionality, please visit UL's [ULi Family of Databases](#). Click on a product designation for complete information.
 Page Bottom

Wiring, Printed - Component

See General Information for Wiring, Printed - Components

O-LEADING SUPPLY CHAIN CO LIMITED E490354

Fortune Building, Nanheng West Road
 Room 1313
 Huizhou, Guangdong 516211, CHINA

Type	Cond Width			SS/ DS/	Area Diam	Max		Flame	Meets	C
	Min Edge	Min Edge	Cond			Solder Limits	Diper			
Hub/Bayer (mass laminate) printed wiring boards.										
D-LEADING-401										
	0.2 (0.004)	0.3 (0.012)	34 (1.34)	D6	12.7 (0.5)	260	10	130	V-0	-
D-LEADING-407										
	0.08 (0.003)	0.2 (0.008)	17 (0.67)	D5	9.2 (0.4)	260	10	170	V-0	NI
Hub/Bayer printed wiring boards.										
D-LEADING-408										
	0.125 (0.005)	0.125 (0.005)	12 (0.47) 31:1.35	D6	50.8 (2.0)	260	20	130	V-0	NI
Single layer printed wiring boards.										
D-LEADING-002										
	0.76 (0.015)	1.14 (0.045)	34 (1.34)	S5	19.1 (0.8)	260	10	105	V-0	NI
D-LEADING-003										
	0.38 (0.015)	1.14 (0.045)	34 (1.34)	S5	19.1 (0.8)	260	10	130	V-0	▲
D-LEADING-033										
	0.15 (0.006)	0.3 (0.012)	34 (1.34)	S5	25.4 (1.0)	260	10	120	V-0	NI
D-LEADING-205										
	0.1 (0.004)	0.3 (0.012)	34 (1.34)	D6	69.6 (2.7)	260	10	130	V-0	NI
D-LEADING-206										
	0.15 (0.006)	0.33 (0.013)	17 (0.67)	D5	69.6 (2.7)	260	10	130	V-0	NI

* - CTI marking is optional and may be marked on the printed wiring board.

Marking: Company name or file number and type designation. May be followed by a suffix to denote factory identification or burning test classification.
 Last updated on 2017-01-27

Questions? Print this page Terms of Use Page Top

http://www.ul.com/ulcertification/UL60718RMS/ulcertification/ZPMV2.E490354/ulcertification/Wiring,Printed-Component/10



Test Report

No. CANEC1805164701

Date: 03 Apr 2018

Page 2 of 8

Test Results:

Test Part Description:

Specimen No. **SGS Sample ID** **Description**
 SN1 CAN18-051647.001 Green PCB*

Remarks:

- (1) 1 mg/kg = 1 ppm = 0.0001%
- (2) MDL = Method Detection Limit
- (3) ND = Not Detected (< MDL)
- (4) * = Not Regulated

RoHS Directive (EU) 2015/863 amending Annex II to Directive 2011/65/EU

Test Method: With reference to IEC 62321-4:2014+A1:2017, IEC62321-5:2013, IEC62321-7-2:2017, IEC 62321-6:2015 and IEC62321-8:2017, analyzed by ICP-OES, UV-Vis and GC-MS.

Test Item(s)	Limit	Unit	MDL	Det
Cadmium (Cd)	100	mg/kg	2	ND
Lead (Pb)	1,000	mg/kg	2	9
Mercury (Hg)	1,000	mg/kg	2	ND
Hexavalent Chromium (CrVI)	1,000	mg/kg	8	ND
Sum of PBBs	1,000	mg/kg	-	ND
Monobromobiphenyl	-	mg/kg	5	ND
Dibromobiphenyl	-	mg/kg	5	ND
Tribromobiphenyl	-	mg/kg	5	ND
Tetrabromobiphenyl	-	mg/kg	5	ND
Pentabromobiphenyl	-	mg/kg	5	ND
Hexabromobiphenyl	-	mg/kg	5	ND
Heptabromobiphenyl	-	mg/kg	5	ND
Octabromobiphenyl	-	mg/kg	5	ND
Nonabromobiphenyl	-	mg/kg	5	ND
Decabromobiphenyl	-	mg/kg	5	ND
Sum of PBDEs	1,000	mg/kg	-	ND
Monobromodiphenyl ether	-	mg/kg	5	ND
Dibromodiphenyl ether	-	mg/kg	5	ND
Tribromodiphenyl ether	-	mg/kg	5	ND
Tetrabromodiphenyl ether	-	mg/kg	5	ND
Pentabromodiphenyl ether	-	mg/kg	5	ND



SGS is pleased to announce that it has been approved by the European Commission as a Notified Body for the certification of products covered by the CE marking. SGS is also a member of the European Conformity Assessment Association (ECAA) and is a member of the International Organization of Standardization (ISO) and the International Electrotechnical Commission (IEC). SGS is a member of the International Union of Pure and Applied Chemistry (IUPAC) and the International Union of Pure and Applied Physics (IUPAP). SGS is a member of the International Union of Pure and Applied Mathematics (IUPM) and the International Union of Pure and Applied Biology (IUPAB). SGS is a member of the International Union of Pure and Applied Geology (IUPG) and the International Union of Pure and Applied Meteorology (IUPM). SGS is a member of the International Union of Pure and Applied Chemistry (IUPAC) and the International Union of Pure and Applied Physics (IUPAP). SGS is a member of the International Union of Pure and Applied Mathematics (IUPM) and the International Union of Pure and Applied Biology (IUPAB). SGS is a member of the International Union of Pure and Applied Geology (IUPG) and the International Union of Pure and Applied Meteorology (IUPM).

Member of the SGS Group (SGS SA)

Gerber 274-X
Cam350
CAD
Protel 99se
PADS
DXP
Eagle

5. PCB

→
→
→AOI→
→PTH→
→
→AOI→
→E / T→