

O-leading

O-Leading PCB PCB PCB PCB PCB EMS HDI PCB PCB PCB PCB OEM rohs pcb

O-leading PCB PCB

OEM 1 12 hasl FR4

O-LEADING
To Be Reliable, To Be Valuable

WE ALWAYS PROVIDE YOU

BEST HIGH DENSITY INTERCONNECT PCB

O-LEADING
To Be Reliable, To Be Valuable

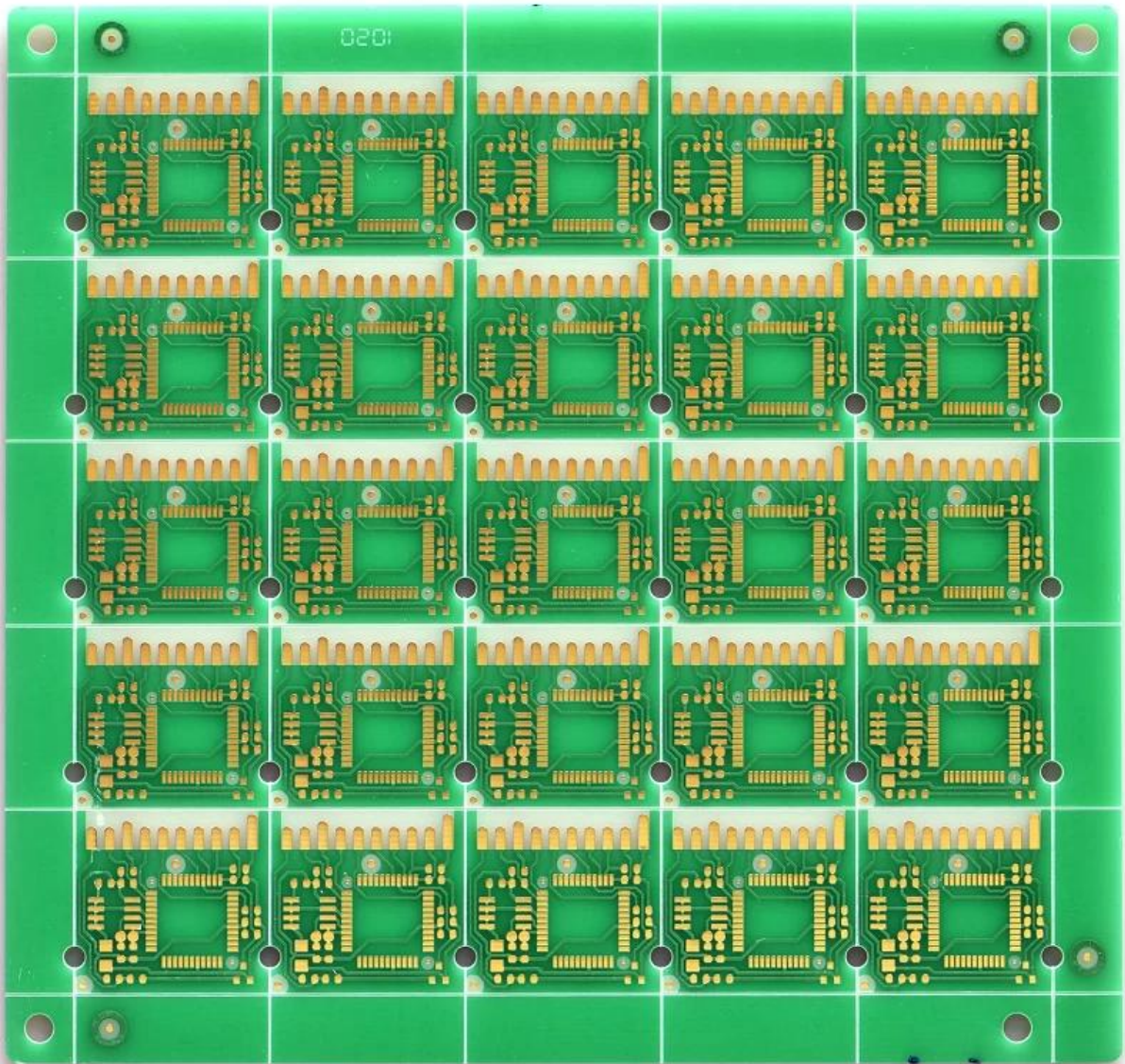
WE ALWAYS PROVIDE YOU

BEST RIGID-FLEXIBLE CIRCUIT

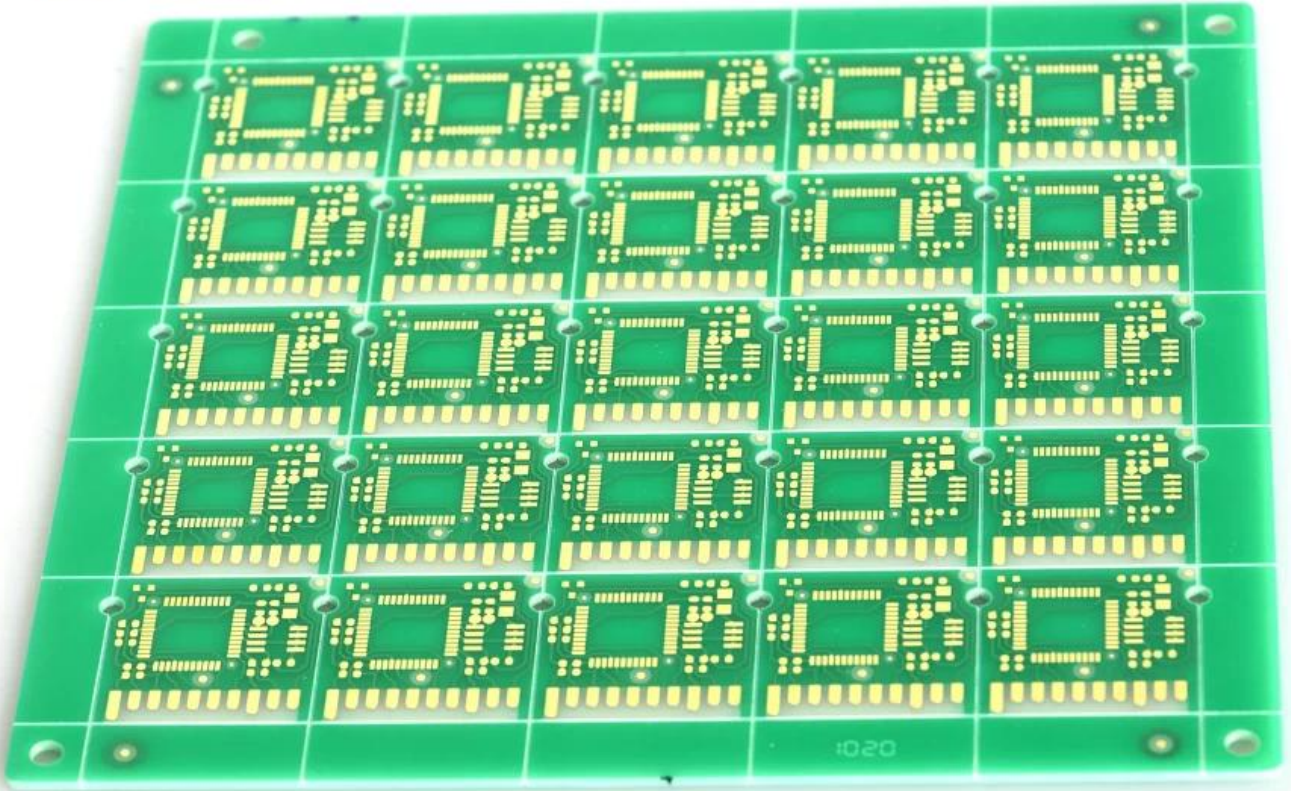
O-LEADING
To Be Reliable, To Be Valuable

QUALITY IS OUR CULTURE

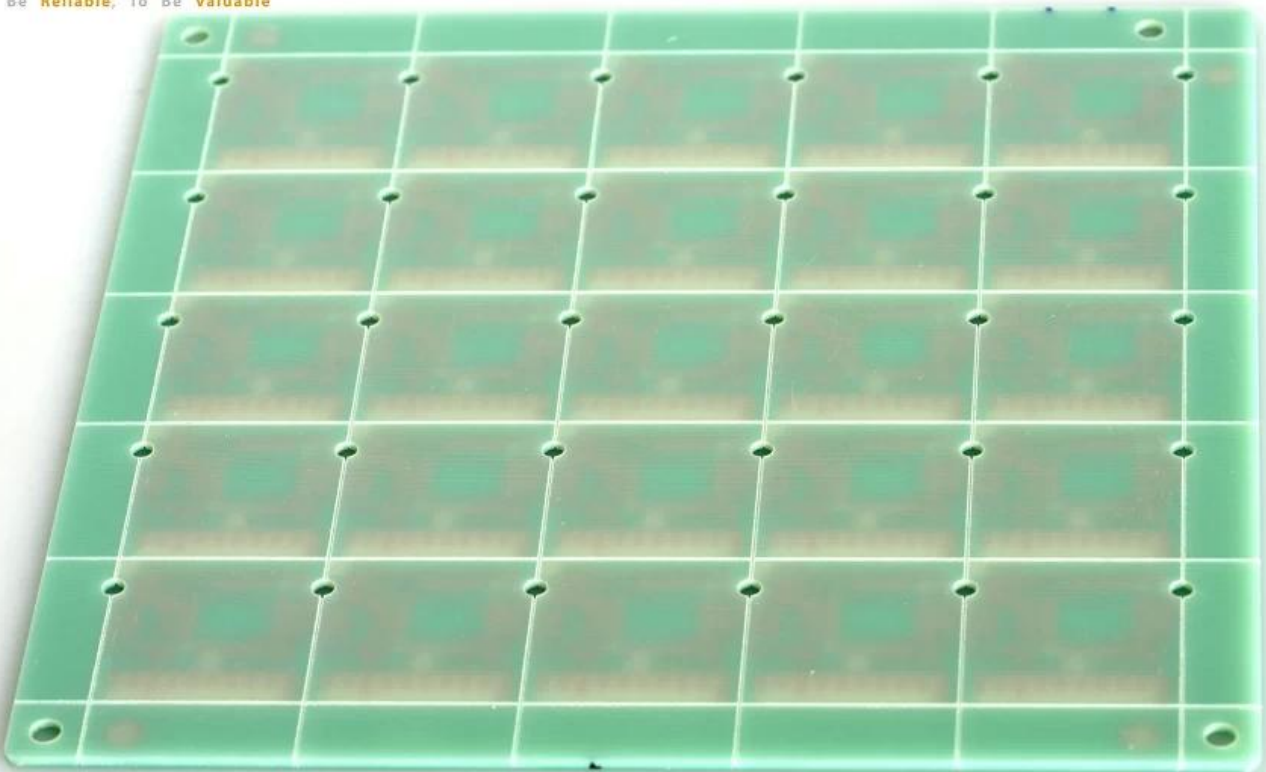


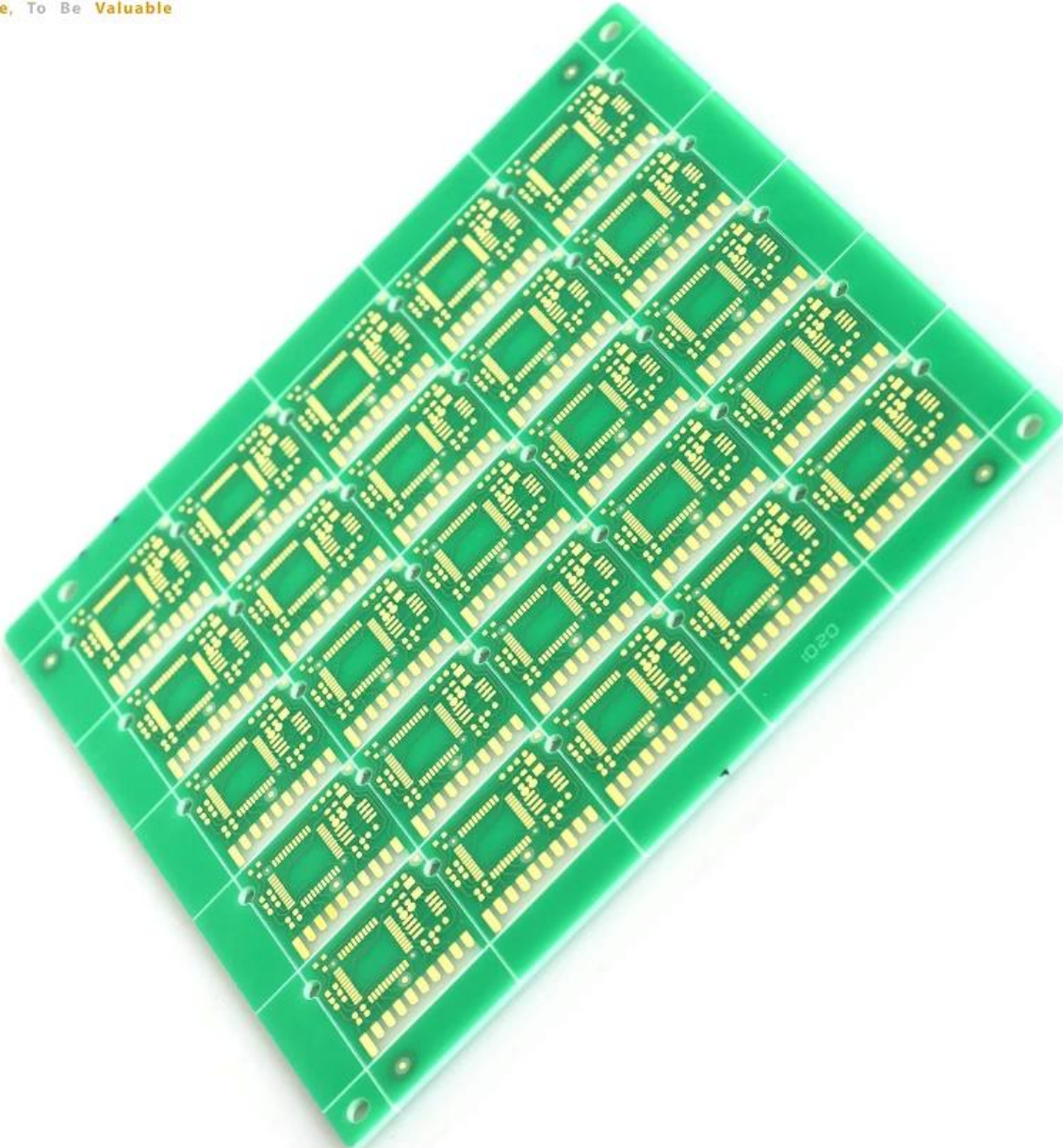


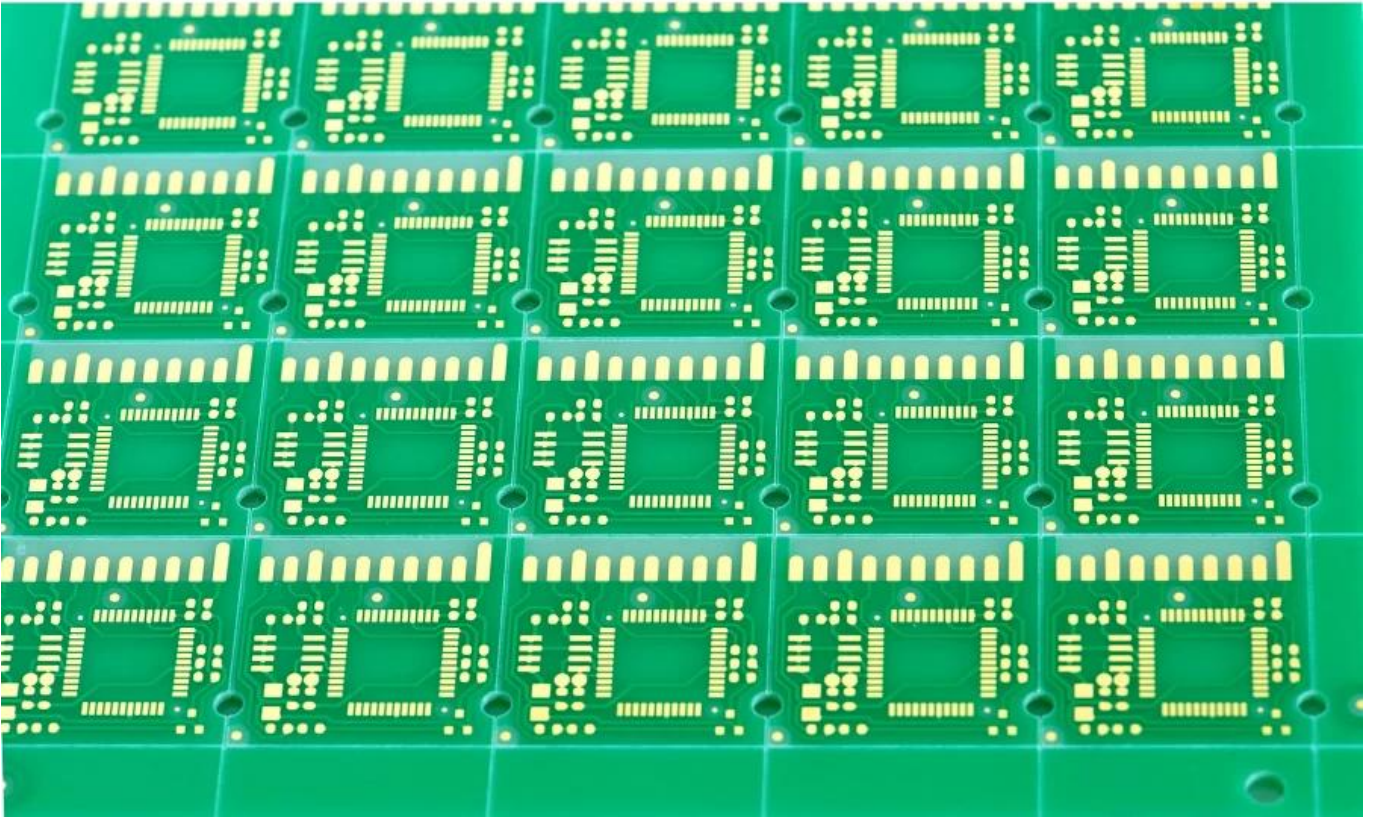
O-LEADING
To Be Reliable, To Be Valuable



O-LEADING
To Be Reliable, To Be Valuable

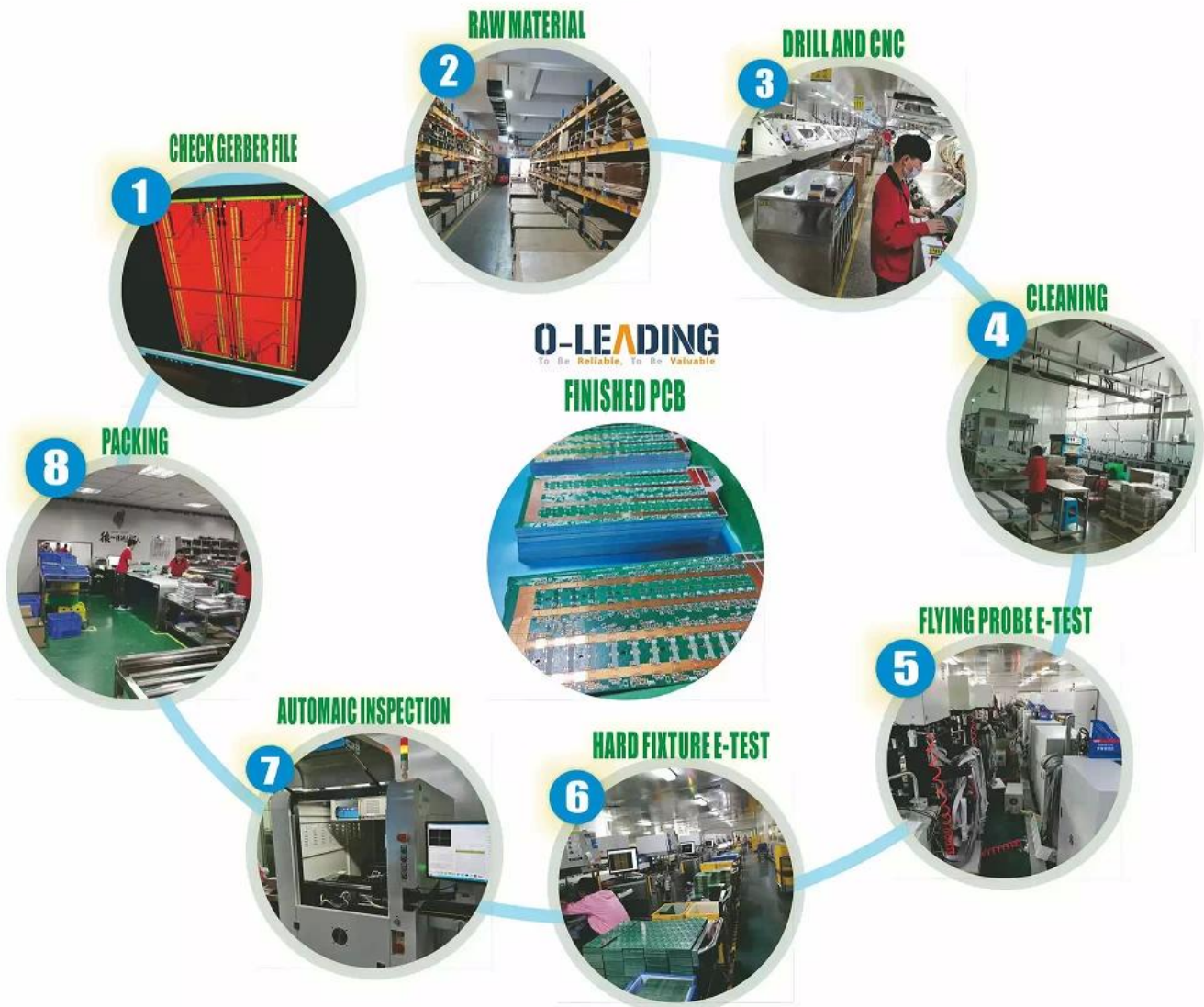






Production Process

18 years experience in one-stop PCB and PCBA, we can make your idea come true,



 CONSUMER ELECTRONICS

 AUTOMOTIVE ELECTRONICS

 INDUSTRIAL CONTROL

 INTELLECTUALIZED HOUSEHOLD CONTROL

 OTHER



30%
CONSUMER ELECTRONICS



18%
INTELLECTUALIZED HOUSEHOLD CONTROL

20%
AUTOMOTIVE ELECTRONICS



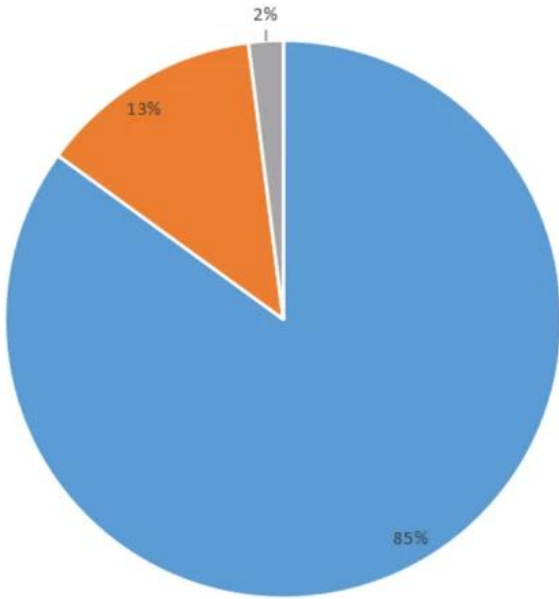
12%
OTHER



20%
INDUSTRIAL CONTROL



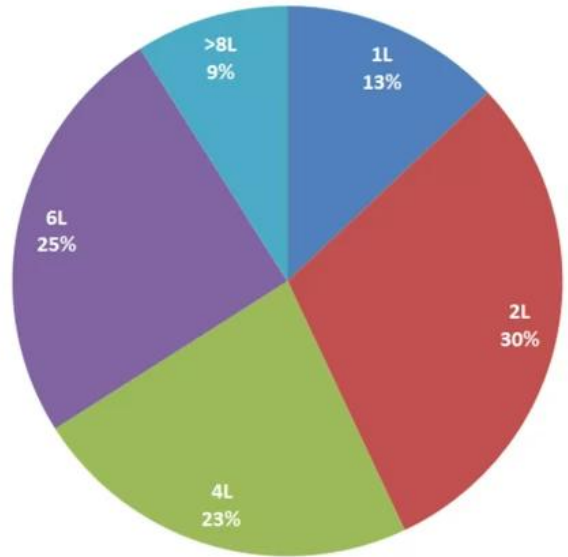
Product types



■ FR-4 PCB ■ MC PCB ■ rigid-flexible PCB

Product layers

■ 1L ■ 2L ■ 4L ■ 6L ■ >8L





Factory PCB



Automatic vacuum press machine



Drilling Machine



Pattern Plating Machine



Scrubbing Machine



Developing Machine



Routing Machine



High-speed flying probe machine



E-test Machine

Factory SMT





CICC INSPECTION CERTIFICATION



嘉泰认证

QUALITY MANAGEMENT SYSTEM CERTIFICATE

Certificate No: 18118Q10347R05

We hereby certify that

O-LEADING SUPPLY CHAIN(HK) CO.,LIMITED

Credit No: 61691591-000-07-18-7

Registration Add: FLAT/RM 1205 12/F TAI SANG BANK BUILDING 130-132 DES VOEUS ROAD CENTRAL HK

Business Add: 1213, Floor 13, Fortune Building, Danshui Town, Huiyang District, Huizhou, Guangdong, China

Has implemented and maintains a **Quality Management System** Which fulfills the requirements of the following standards
GB/T19001-2016 idt ISO9001:2015

Scope of certification
Sales of printed circuit boards

Initial issuance period: February 27, 2018
Renewal date: April 22, 2019
This certificate is valid during: April 22, 2019 – February 26, 2021
This certificate is invalid without CICC qualified label in the following period

| | | |
|-----------------------------|------------------------------|----------------|
| First supervision and audit | Second supervision and audit | Qualified mark |
|-----------------------------|------------------------------|----------------|

The certification registration number does not include those production stages which fail to be covered by the relevant effective administrative procedures and qualification procedures stipulated by the state. The effectiveness of this certificate shall be restricted to those activities which are covered by the certification. The actual information of this certification can be searched on the internet of CICC www.cicc.com.cn. For the sake of clarity see also the note.






CICC INSPECTION CERTIFICATION



嘉泰认证

质量管理体系认证证书

证书号: 18118Q10347R05

兹证明

诚领供应链(香港)有限公司

统一社会信用代码: 61691591-000-07-18-7

注册地址: 香港中環德輔道中130-132號大生銀行大廈1205室

经营地址: 广东惠州惠阳淡水南亨西路财富大厦13楼1313

建立的质量管理体系符合
GB/T19001-2016 idt ISO9001:2015 质量标准适用条款的要求

认证范围
印刷线路板的销售

初次获证日期: 2018年02月27日
换证日期: 2019年04月22日
证书有效期: 自2019年04月22日至2021年02月26日
在下列期限内, 未经CICC黏贴合格标贴, 本证书无效

| | | |
|-------|-------|-----|
| 第一次复审 | 第二次复审 | 黏贴处 |
|-------|-------|-----|

本证书认证范围不包括未取得有效的国家规定的行政许可、资质许可的产品/服务范围; 本证书通过CICC定期监督审核保持, 与年度《保持认证通知书》共同方为有效; 本证书信息可在国家认监委网站: www.cnca.gov.cn及CICC网站www.cicc.com.cn查询。








Test Report

No. SZXEC1900530401 Date: 30 Mar 2019 Page 1 of 6

O-LEADING SUPPLY CHAIN (HK) CO., LIMITED

1313.FLOOR 13, FORTUNE BUILDING, DANSHUI TOWN, HUIYANG DISTRICT, HUIZHOU, GUANGDONG, CHINA

The following sample(s) was/were submitted and identified on behalf of the clients as : OSP

SGS Job No. : RP19-005089 - SZ
Date of Sample Received : 22 Mar 2019
Testing Period : 22 Mar 2019 - 30 Mar 2019
Test Requested : Selected test(s) as requested by client.
Test Method : Please refer to next page(s).
Test Results : Please refer to next page(s).

Conclusion : Based on the performed tests on submitted sample(s), the results of Lead, Mercury, Cadmium, Hexavalent chromium, Polybrominated biphenyls (PBBs), Polybrominated diphenyl ethers (PBDEs) and Phthalates such as Bis(2-ethylhexyl) phthalate (DEHP) , Butyl benzyl phthalate (BBP), Dibutyl phthalate (DBP) , and Diisobutyl phthalate (DIBP) comply with the limits as set by RoHS Directive (EU) 2015/863 amending Annex II to Directive 2011/65/EU.

Signed for and on behalf of
SGS-CSTC Standards Technical Services Co., Ltd. Shenzhen Branch

Tina
Tina Fan
Approved Signatory



Unless otherwise agreed in writing, this document is issued by the Company subject to its General Conditions of Service printed overleaf, available on request or accessible at http://www.sgs.com/terms-and-conditions.aspx and, for electronic format documents, subject to Terms and Conditions for Electronic Documents at http://www.sgs.com/terms-and-conditions/Electronic-Document.aspx. Attention is drawn to the limitation of liability, indemnification and jurisdiction issues defined therein. Any holder of this document is advised that unless he/she expressly agrees to the Company's liability at the time of its intended use, the limits of the Company's liability are restricted to the extent of the Company's liability under the transaction documents. This document cannot be reproduced or transmitted in any form or by any means, electronic, mechanical, photocopying, recording, or by any information storage and retrieval system, without prior written approval of the Company. Any unauthorized alteration, forgery or falsification of the content or appearance of this document is unlawful and offenders may be prosecuted to the fullest extent of the law. Unless otherwise stated the results shown in this report refer only to the samples tested.

SGS (China) Co., Ltd. Shenzhen Branch (深圳分公司) 地址: 深圳市福田区车公庙工业基地505号 邮编: 518029 | 86-755-2528888 | 86-755-83106190 | www.sgs.com.cn
中国·深圳·深圳市福田区车公庙工业基地505号 邮编: 518029 | 86-755-2528888 | 86-755-83106190 | sgs.china@sgs.com

Member of the SGS Group (SGS SA)



Test Report

No. SZXEC1900530401 Date: 30 Mar 2019 Page 2 of 6

Test Results :

Test Part Description :

Specimen No. : SN1
SGS Sample ID : SZX19-005304.001
Description : Green"PCB"

Remarks :

- (1) 1 mg/kg = 1 ppm = 0.0001%
(2) MDL = Method Detection Limit
(3) ND = Not Detected (< MDL)
(4) "-" = Not Regulated

RoHS Directive (EU) 2015/863 amending Annex II to Directive 2011/65/EU

Test Method : With reference to IEC 62321-4:2013+A1:2017, IEC 62321-5:2013, IEC 62321-7-2:2017, IEC 62321-6:2015 and IEC 62321-8:2017, analyzed by ICP-OES, UV-Vis and GC-MS.

Table with 5 columns: Test Item(s), Limit, Unit, MDL, and 0/1. Lists various substances like Cadmium, Lead, Mercury, Hexavalent Chromium, and various brominated biphenyls with their respective limits and detection results.



Unless otherwise agreed in writing, this document is issued by the Company subject to its General Conditions of Service printed overleaf, available on request or accessible at http://www.sgs.com/terms-and-conditions.aspx and, for electronic format documents, subject to Terms and Conditions for Electronic Documents at http://www.sgs.com/terms-and-conditions/Electronic-Document.aspx. Attention is drawn to the limitation of liability, indemnification and jurisdiction issues defined therein. Any holder of this document is advised that unless he/she expressly agrees to the Company's liability at the time of its intended use, the limits of the Company's liability are restricted to the extent of the Company's liability under the transaction documents. This document cannot be reproduced or transmitted in any form or by any means, electronic, mechanical, photocopying, recording, or by any information storage and retrieval system, without prior written approval of the Company. Any unauthorized alteration, forgery or falsification of the content or appearance of this document is unlawful and offenders may be prosecuted to the fullest extent of the law. Unless otherwise stated the results shown in this report refer only to the samples tested.

SGS (China) Co., Ltd. Shenzhen Branch (深圳分公司) 地址: 深圳市福田区车公庙工业基地505号 邮编: 518029 | 86-755-2528888 | 86-755-83106190 | www.sgs.com.cn
中国·深圳·深圳市福田区车公庙工业基地505号 邮编: 518029 | 86-755-2528888 | 86-755-83106190 | sgs.china@sgs.com

Member of the SGS Group (SGS SA)



ZPMV2.E490354 - WIRING, PRINTED - COMPONENT

Wiring, Printed - Component

See General Information for Wiring, Printed - Component

O-LEADING SUPPLY CHAIN (HK) CO LTD
 ROOM 1205, 12/F
 TAI SANG BANK BLDG
 130-132 DES VOEUS ROAD
 CENTRAL, HONG KONG

E490354

| Type | Cond Width | | Cond Thk | SS/ DS/ DSO | Max Area Diam | Max Solder Limits | | Max Oper Temp | | Meets UL796 | C |
|--|---------------|---------------|----------------------|-------------|---------------|-------------------|-----|---------------|-------|-------------|---|
| | Min | Edge | | | | C | sec | C | Class | | |
| | mm(in) | mm(in) | mic(mil) | | mm(in) | C | sec | C | Class | DSR | I |
| Multilayer (mass laminate) printed wiring boards. | | | | | | | | | | | |
| O-LEADING-401 | 0.1 (0.004) | 0.3 (0.012) | 34 (1.34) | DS | 12.7 (0.5) | 260 | 10 | 130 | V-0 | - | - |
| O-LEADING-407 | 0.08 (0.003) | 0.2 (0.008) | 17 (0.67) | DS | 9.7 (0.4) | 260 | 10 | 130 | V-0 | All | - |
| Multilayer printed wiring boards. | | | | | | | | | | | |
| O-LEADING-408 | 0.125 (0.005) | 0.125 (0.005) | 12 (0.47) Int:136 | DS | 50.8 (2.0) | 280 | 20 | 130 | V-0 | All | * |
| Single layer printed wiring boards. | | | | | | | | | | | |
| O-LEADING-002 | 0.38 (0.015) | 1.14 (0.045) | 34 (1.34) | SS | 19.1 (0.8) | 260 | 10 | 105 | V-0 | All | - |
| O-LEADING-003 | 0.38 (0.015) | 1.14 (0.045) | 34 (1.34) | SS | 19.1 (0.8) | 260 | 10 | 130 | V-0 | ▲ | - |
| O-LEADING-033 | 0.15 (0.006) | 0.3 (0.012) | 34 (1.34) | SS | 25.4 (1.0) | 260 | 10 | 120 | V-0 | All | - |
| O-LEADING-205 | 0.1 (0.004) | 0.3 (0.012) | 34 (1.34) | DS | 69.6 (2.7) | 260 | 10 | 130 | V-0 | All | - |
| O-LEADING-206 | 0.15 (0.006) | 0.33 (0.013) | 17 (0.67) | DS | 69.6 (2.7) | 260 | 10 | 130 | V-0 | All | - |
| O-LEADING-D01 | 0.14 (0.006) | 0.15 (0.006) | 33 (1.30) | DS | 25.4 (1.0) | 260 | 10 | 130 | V-0 | All | * |
| O-LEADING-S01 | 0.25 (0.010) | 0.25 (0.010) | 17 (0.67) | SS | 25.4 (1.0) | 260 | 4 | 130 | V-0 | All | * |

WIRING, PRINTED - COMPONENT | UL Product iQ

| | | | | | | | | | | | |
|----------------------|--------------|--------------|-----------|----|------------|-----|---|-----|-----|-----|---|
| O-LEADING-S02 | 0.2 (0.008) | 0.2 (0.008) | 17 (0.67) | SS | 25.4 (1.0) | 260 | 4 | 130 | HB | ▲ | * |
| O-LEADING-S03 | 0.25 (0.010) | 0.25 (0.010) | 34 (1.34) | SS | 25.4 (1.0) | 260 | 4 | 130 | V-0 | All | * |

* - CTI marking is optional and may be marked on the printed wiring board.

Marking: Company name or file number and type designation. May be followed by a suffix to denote factory identification or burning test classification.

并不是所有出现在本数据库中的公司名称和产品都满足了UL跟踪检验服务的要求。只有带有UL标志的产品，才应该被视为经过UL认证，并满足UL跟踪检验服务的要求。注意查看产品上的标志。

UL 允许在线认证目录中所含材料的复制遵循以下条件：1.指南信息、装配、构造、设计、系统和/或认证（文件）必须在不篡改任何数据（或图纸）的情况下完整且无误导性地呈现。2.经 UL 允许从在线认证目录转载“声明必须出现在所提取材料的邻近位置。此外，转载材料必须包含以下格式的版权声明：“© 2019 UL LLC”



| | |
|---------------------|----------------------|
| PCB | |
| Layer | 1Layer-32Layer |
| Weight | 1 / 3oz-12oz |
| Thickness | 3.0mil / 3.0mil |
| Thickness | 4.0mil / 4.0mil |
| Drill | 10µ1 |
| Drill | 0.2mm 5.0mm |
| Size | 635 * 1500mm |
| Thickness | 4mil |
| Plated | +/- 3mil |
| Blind / Buried Vias | All |
| Via Fill | |
| Material | FR-4 FR-4high Tg |
| Surface | HASL OSP ENIG HAL-LF |

| | |
|------------|------------------|
| SMT | |
| PCB | FR-4 CEM-1 CEM-3 |
| PCB | 510x460mm |
| PCB | 50x50mm |
| PCB | 0.5mm 4.5mm |
| Drill | 0.5 4mm |
| Drill | 0201 |
| Drill | 0603 |
| Drill | 15mm |
| Drill | 0.3mm |
| BGA | 0.4mm |
| Drill | +/- 0.03mm |



Shipping service



| Quick Turn Lead Time | | |
|----------------------|----------|---------------------|
| Layer Count: | Lead Tim | Special Requirement |
| 1L/2L | 2-3days | 24 Hours,48 Hours |
| 4L | 3-4days | 48 Hours |
| 6L | 4-5days | 72 Hours |
| 8L | 5-6days | NA |
| 10L | 6-7days | NA |
| 12L | 7-8days | NA |
| 14L | 8-9days | NA |

| Standard Lead Time | | |
|--------------------|------------------|------------------------|
| Layer Count: | Sample Lead Time | Volume order lead time |
| 2L | 4 days | 10 days |
| 4L | 5 days | 11 days |
| 6L | 6 days | 12 days |
| 8L | 8 days | 14 days |
| 10L | 10 days | 16 days |
| 12L | 12 days | 18 days |
| 14L | 14 days | 20 days |
| 16-32L | 18 days | 24 days |



1. O

- 1.1
- 1.2
- 1.3
- 1.4
- 1.5

2. O-Leading

10 2 3 4 31 O-Leading

3. O-Leading

FR4 TG / PI

4. PCB PCBA

- 4.1 BOM
- 4.2 PCB
- 4.3 PCB PCBA
- 4.4
- 4.5

5. PCB

→ → → AOI → → → PTH → → → → → → → → → E / T →

6. HDI

VCP LDI LDI

7. O-

O- ENIG OSP LF-HASL / OSI ENIG OSP + ENIG HDI BGAPAD 0.3 mm OSP OSP + ENIG

8. FPC O-Leading SMT

O-Leading FPC 1 8 2000mm * 240mm SMT

9. PCB

- ;
- ;
- ;
- ;
- PCB;
- ;
- ;

10. PCB PWB FPC

PCB PWB Printed Wire Board Printed Circuit Board FPC

11. PCB

PCB Tg CTE PCB 250°C 50 PCB

12. O-leading PCB

O-leading PCB FPC PCB

13.

POLAR INSTRUMENTS SI6000 soft CITS 500s

