

# O

10 PCB - PCB MCPCB  
 - 24 S / S 48-96 4-8

.025 AVG .020 ..

25 /

# O

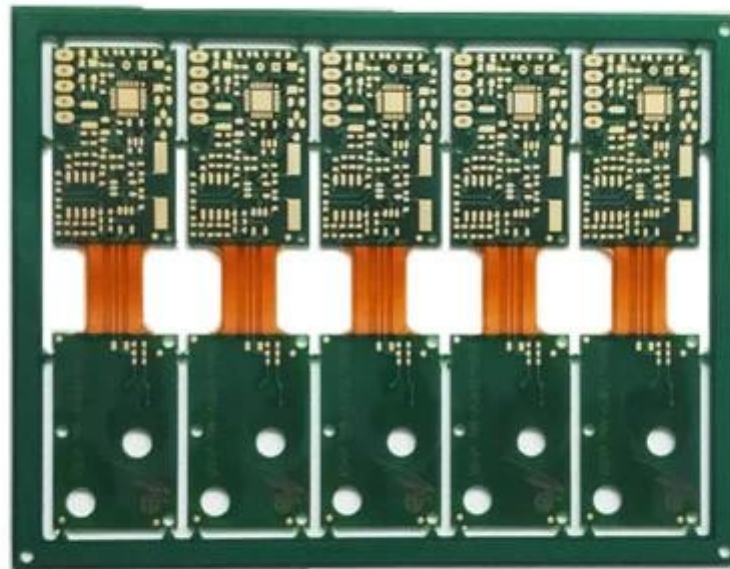
			O
	FR-4		0.5 5
	0.2mm		0.2mm
	OSP HASL		0.1 5mm
	LED		PCB
	ISO9001 UL RoHS SGS	Q / CTN	10PCS-100PCS
	0.01kg 5kg	MOQ	10
			\$ 0.1 \$ 10
	PCB PCB		0.01m 3 10m 3
			0.2mm

	16 OEM PCB
	7-12

## 16 OEM PCB

	2014		2015 2016		2017 2018	
	32	42	38	44	42	48
$\mu\text{m}$	50/50	40/45	40/45	40/40	35/40	35/35
mm	0.15	0.10	0.15	0.10	0.15	0.10
PTH	14 1	16 1	16 1	18 1	18 1	20 1
N + C + N	4 + C + 4	5 + C + 5	5 + C + 5	6 + C + 6	5 + C + 5	6 + C + 6

□□□□□□□□	5 + 2 + 5	6 + 2 + 6	5 + 2 + 5	6 + 2 + 6	5 + 2 + 5	6 + 2 + 6
□□□□□□	□□	-	□□	-	□□	-
□□□□□□□□□□μm□	50	40	40	30	40	30
□□□□□□□□□□μm□	75	65	65	50	50	40
□□□□□□ □/□□□□	□□	-	□□	-	□□	-
□□	FR4□Megtron□Nelco□Rogers□Heavy Copper□					
□□□□□□□□□□	□□	-	□□	-	□□	-
□□□□□	□□□□HASL□ENIG□OSP□□□□□□□□□□ □□□□□□□□□□□□□□□□□□□□□□□□□□□□□□□□ □□□□□□□□□□□□□□□□□□□□□□□□□□□□□□□□					



[www.o-leading.com](http://www.o-leading.com)

[HDI PCB](#) [PCB](#)

[PCB](#)









201726 201VZL430354 - Wiring, Printed - Component



ZPMV2.E490354  
Wiring, Printed - Component

For enhanced search functionality, please visit [UL's IoT Family of Databases](#).  
Click on a product designation for complete information.

[Page Bottom](#)

Wiring, Printed - Component

[See General Information for Wiring, Printed - Components](#)

O-LEADING SUPPLY CHAIN CO LIMITED

E490354

Fortune Building, Nanheng West Road  
Room 1313  
Huizhou, Guangdong 516211, CHINA

	Cond Width				D50	Min	Max	Dper	Flame	RoHS	C
	Min	Cond	SS/Thk	Area							
Typ	max(in)	mm(in)	mic(mil)	mm(in)	C	sec	C	Class	DSR	I	
<b>Multi-layer (mass laminate) printed wiring boards.</b>											
<b>D-LEADING-401</b>											
	0.2 (0.004)	0.3 (0.012)	34 (1.34)	D6	12.7 (0.5)	260	10	130	V-0	-	-
<b>D-LEADING-407</b>											
	0.08 (0.003)	0.2 (0.008)	17 (0.67)	D5	9.2 (0.4)	260	10	130	V-0	NI	-
<b>Multi-layer printed wiring boards.</b>											
<b>D-LEADING-408</b>											
	0.125 (0.005)	0.125 (0.005)	12 (0.47) min:1.35	D6	50.8 (2.0)	260	20	130	V-0	NI	*
<b>Single layer printed wiring boards.</b>											
<b>D-LEADING-002</b>											
	0.76 (0.03)	1.14 (0.045)	34 (1.34)	S5	19.1 (0.8)	260	10	105	V-0	NI	-
<b>D-LEADING-003</b>											
	0.38 (0.015)	1.14 (0.045)	34 (1.34)	S5	19.1 (0.8)	260	10	130	V-0	▲	-
<b>D-LEADING-033</b>											
	0.15 (0.006)	0.3 (0.012)	34 (1.34)	S5	25.4 (1.0)	260	10	120	V-0	NI	-
<b>D-LEADING-205</b>											
	0.1 (0.004)	0.3 (0.012)	34 (1.34)	D6	69.6 (2.7)	260	10	130	V-0	NI	-
<b>D-LEADING-206</b>											
	0.15 (0.006)	0.33 (0.013)	17 (0.67)	D5	69.6 (2.7)	260	10	130	V-0	NI	-

\* - CTI marking is optional and may be marked on the printed wiring board.

Marking: Company name or file number and type designation. May be followed by a suffix to denote factory identification or burning test classification.  
Last updated on 2017-01-27

Questions? [Print this page](#) [Terms of Use](#) [Page Top](#)

[http://www.ul.com/portal/ulcert/ulcert.nsf/\(open\)?open=ZPMV2.E490354&doc=ZPMV2.E490354-Component-10](#)



Test Report

No. CANEC1805164701

Date: 03 Apr 2018

Page 2 of 8

Test Results:

Test Part Description:

Specimen No. **SGS Sample ID Description**  
SN1 CAN18-051647.001 Green "PCB"

Remarks:

- (1) 1 mg/kg = 1 ppm = 0.0001%
- (2) MDL = Method Detection Limit
- (3) ND = Not Detected (< MDL)
- (4) "-" = Not Regulated

RoHS Directive (EU) 2015/863 amending Annex II to Directive 2011/65/EU

Test Method: With reference to IEC 62321-4:2014+A1:2017, IEC 62321-5:2013, IEC 62321-7-2:2017, IEC 62321-6:2015 and IEC 62321-8:2017, analyzed by ICP-OES, UV-Vis and GC-MS.

Test Item(s)	Limit	Unit	MDL	Det
Cadmium (Cd)	100	mg/kg	2	ND
Lead (Pb)	1,000	mg/kg	2	9
Mercury (Hg)	1,000	mg/kg	2	ND
Hexavalent Chromium (CrVI)	1,000	mg/kg	8	ND
Sum of PBBs	1,000	mg/kg	-	ND
Monobromobiphenyl	-	mg/kg	5	ND
Dibromobiphenyl	-	mg/kg	5	ND
Tribromobiphenyl	-	mg/kg	5	ND
Tetrabromobiphenyl	-	mg/kg	5	ND
Pentabromobiphenyl	-	mg/kg	5	ND
Hexabromobiphenyl	-	mg/kg	5	ND
Heptabromobiphenyl	-	mg/kg	5	ND
Octabromobiphenyl	-	mg/kg	5	ND
Nonabromobiphenyl	-	mg/kg	5	ND
Decabromobiphenyl	-	mg/kg	5	ND
Sum of PBDEs	1,000	mg/kg	-	ND
Monobromodiphenyl ether	-	mg/kg	5	ND
Dibromodiphenyl ether	-	mg/kg	5	ND
Tribromodiphenyl ether	-	mg/kg	5	ND
Tetrabromodiphenyl ether	-	mg/kg	5	ND
Pentabromodiphenyl ether	-	mg/kg	5	ND



SGS is pleased to announce the implementation of the RoHS Directive (EU) 2015/863 amending Annex II to Directive 2011/65/EU. The new directive introduces a list of restricted substances and their maximum concentrations (MCLs) for use in electrical and electronic equipment (EEE). SGS is committed to providing our clients with the highest quality of testing and certification services to ensure compliance with the RoHS Directive. For more information, please visit [http://www.sgs.com/rohs](#).

Member of the SGS Group (SGL SA)





5. PCB

→ → AOI → → PTH → → → → E / T →