

O

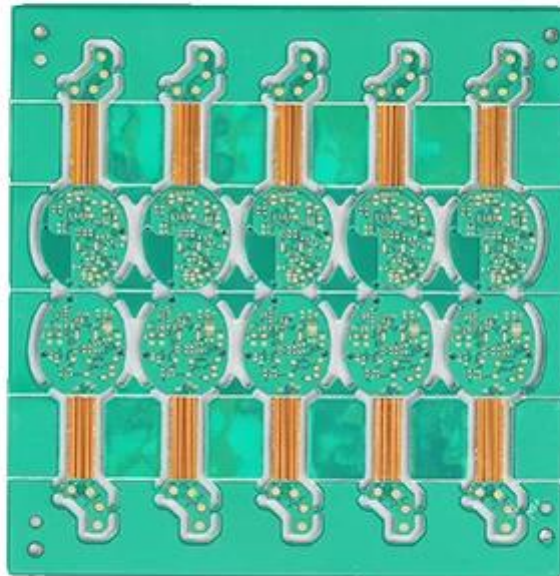
10 PCB - PCB MCPCB
 - 24 S / S 48-96 4-8

.025 AVG .020

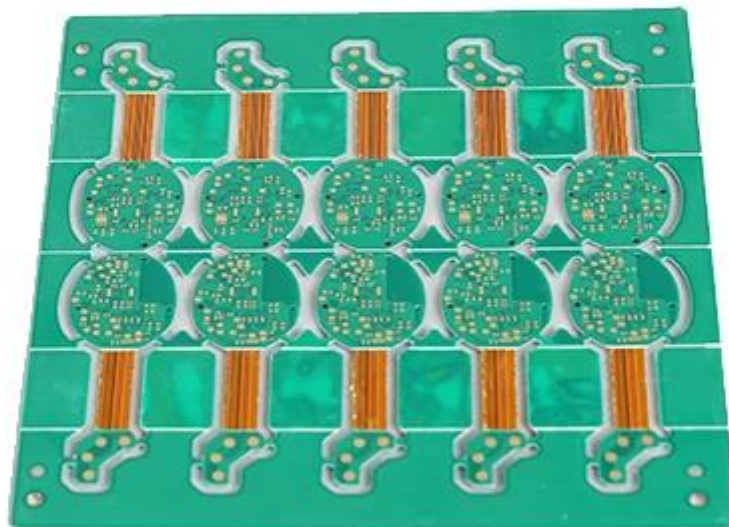
25 /

O

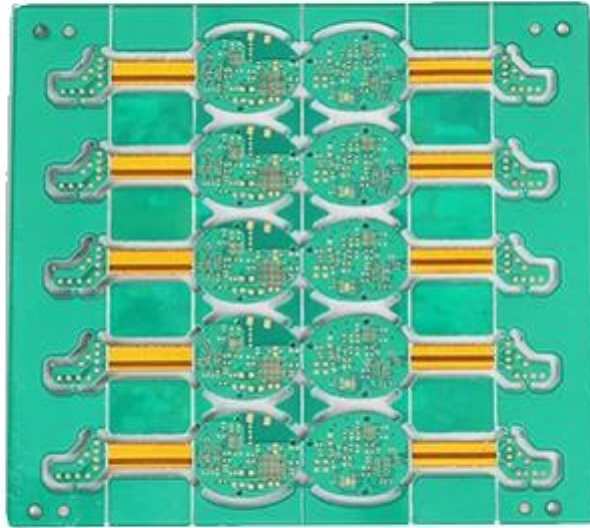
PCB P / N	x-out 6L - PCB
	6L 4L + 2L
	FR-4 TG150
THK	0.80mm
THK	1 / H / H / H / H / 1
	0.20mm
	187
w / s	4/4
Y / N Tol	Y
	Au 0.05-0.12UM
	/
	X mm 29.8 Y mm 11.2
	X mm 73.6; Y mm 74; UPS 10
	N
	CNC



www.o-leading.com



www.o-leading.com



www.o-leading.com







5. PCB

→ → AOI → → PTH → → → → E / T →