

O

O-Leading PCB PCB PCB PCB PCB EMS HDIPCB PCB PCB PCB PCB

O PCB PCB

10 PCB PCB PCB MCPCB 24 S / S 48-96 4-8

.025 AVG .020

25 PCS /

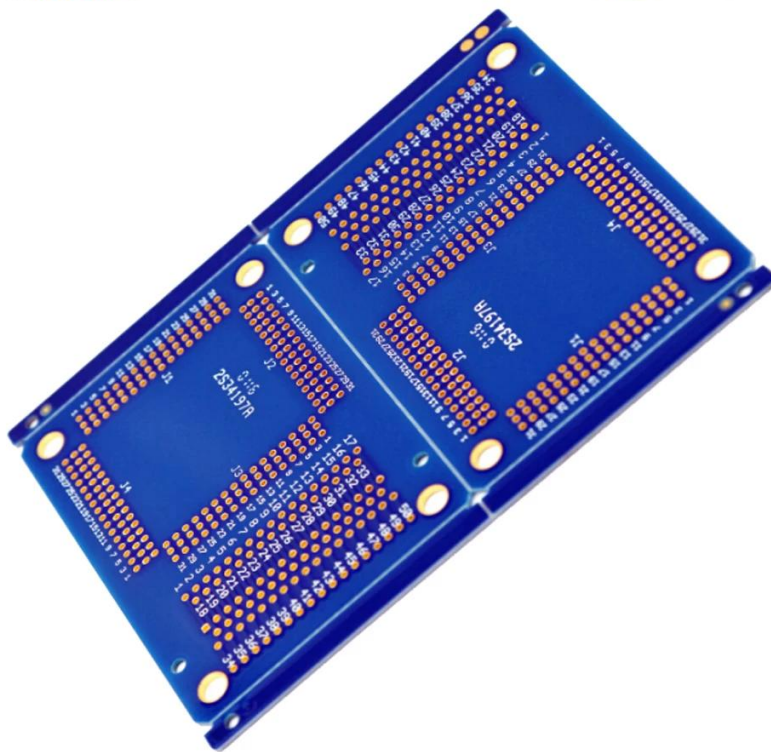
			O
	FR-4 ,		0.5oz-5oz
	0.2mm		0.1-5mm
	OSP HASL		
	led		
	ISO9001 UL RoHS SGS	Q / CTN	10PCS-100PCS
	0.01kg -5kg	MOQ	10
	PCB PCB PCB		0.2mm
			0.1 10
			0.01m3-10m3

16 OEM PCB

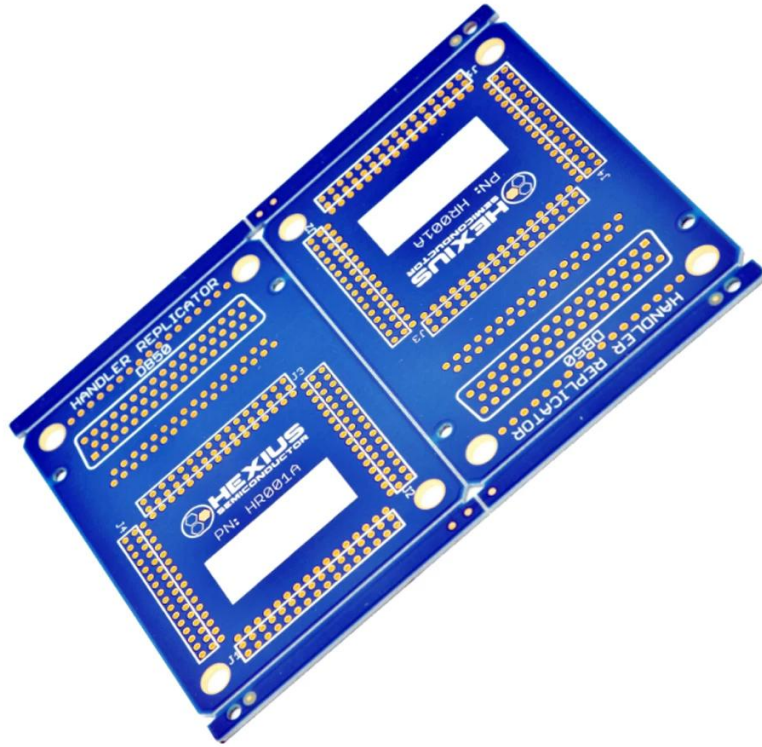
	2014		2015 2016		2017 2018	
	32	42	38	44	42	48
/ μm	50/50	40/45	40/45	40/40	35/40	35/35
	0.15	0.10	0.15	0.10	0.15	0.10

PTH	14	16	16	18	18	20
N + C + N	4 + C + 4	5 + C + 5	5 + C + 5	6 + C + 6	5 + C + 5	6 + C + 6
	5 + 2 + 5	6 + 2 + 6	5 + 2 + 5	6 + 2 + 6	5 + 2 + 5	6 + 2 + 6
		-		-		-
μm	50	40	40	30	40	30
μm	75	65	65	50	50	40
		-		-		-
	FR4 Megtron Nelco Rogers Heavy Copper					
PCB		-		-		-
	HASL ENIG OSP					

O-LEADING
To Be Reliable, To Be Valuable



www.o-leading.com



www.o-leading.com









201726 201VZL430354 - Wiring, Printed - Component



ZPMV2.E490354
Wiring, Printed - Component

For enhanced search functionality, please visit UL's [online family of databases](#).
Click on a product designation for complete information.

Page Bottom

Wiring, Printed - Component

See General Information for Wiring, Printed - Components

O-LEADING SUPPLY CHAIN CO LIMITED 4190354

Fortune Building, Nanheng West Road
Room 1313
Huizhou, Guangdong 516211, CHINA

Type	Cond Width			SS/ DS/ Diam	Area	Solder		Flame	RoHS	C
	Min	Max	Min			Max	Temp			
Hub/Bayer (mass laminate) printed wiring boards.										
D-LEADING-401										
	0.2 (0.004)	0.3 (0.012)	34 (1.34)	D6	12.7 (0.5)	260	10	130	V-0	-
D-LEADING-407										
	0.08 (0.003)	0.2 (0.008)	17 (0.67)	D5	9.2 (0.4)	260	10	170	V-0	NI
Hub/Bayer printed wiring boards.										
D-LEADING-408										
	0.125 (0.005)	0.125 (0.005)	12 (0.47) min:1.35	D6	50.8 (2.0)	260	20	130	V-0	NI
Single layer printed wiring boards.										
D-LEADING-002										
	0.76 (0.015)	1.14 (0.045)	34 (1.34)	S5	19.1 (0.8)	260	10	105	V-0	NI
D-LEADING-003										
	0.38 (0.015)	1.14 (0.045)	34 (1.34)	S5	19.1 (0.8)	260	10	130	V-0	▲
D-LEADING-033										
	0.15 (0.006)	0.3 (0.012)	34 (1.34)	S5	25.4 (1.0)	260	10	120	V-0	NI
D-LEADING-205										
	0.1 (0.004)	0.3 (0.012)	34 (1.34)	D6	69.6 (2.7)	260	10	130	V-0	NI
D-LEADING-206										
	0.15 (0.006)	0.33 (0.013)	17 (0.67)	D5	69.6 (2.7)	260	10	130	V-0	NI

* - CTI marking is optional and may be marked on the printed wiring board.

Marking: Company name or file number and type designation. May be followed by a suffix to denote factory identification or burning test classification.
Last updated on 2017-01-27

Questions? [Print this page](#) [Terms of Use](#) [Page Top](#)

http://www.ul.com/onlinecertifications/UL60718RMS/ewg/ul/Prod/ZPMV2.E490354/cond/Wiring,Printed-Component/10



Test Report

No. CANEC1805164701

Date: 03 Apr 2018

Page 2 of 8

Test Results:

Test Part Description:

Specimen No. **SGS Sample ID** **Description**
SN1 CAN18-051647.001 Green "PCB"

Remarks:

- (1) 1 mg/kg = 1 ppm = 0.0001%
- (2) MDL = Method Detection Limit
- (3) ND = Not Detected (< MDL)
- (4) "-" = Not Regulated

RoHS Directive (EU) 2015/863 amending Annex II to Directive 2011/65/EU

Test Method: With reference to IEC 62321-4:2014+A1:2017, IEC 62321-5:2013, IEC 62321-7-2:2017, IEC 62321-6:2015 and IEC 62321-8:2017, analyzed by ICP-OES, UV-Vis and GC-MS.

Test Item(s)	Limit	Unit	MDL	Det
Cadmium (Cd)	100	mg/kg	2	ND
Lead (Pb)	1,000	mg/kg	2	9
Mercury (Hg)	1,000	mg/kg	2	ND
Hexavalent Chromium (CrVI)	1,000	mg/kg	8	ND
Sum of PBBs	1,000	mg/kg	-	ND
Monobromobiphenyl	-	mg/kg	5	ND
Dibromobiphenyl	-	mg/kg	5	ND
Tribromobiphenyl	-	mg/kg	5	ND
Tetrabromobiphenyl	-	mg/kg	5	ND
Pentabromobiphenyl	-	mg/kg	5	ND
Hexabromobiphenyl	-	mg/kg	5	ND
Heptabromobiphenyl	-	mg/kg	5	ND
Octabromobiphenyl	-	mg/kg	5	ND
Nonabromobiphenyl	-	mg/kg	5	ND
Decabromobiphenyl	-	mg/kg	5	ND
Sum of PBDEs	1,000	mg/kg	-	ND
Monobromodiphenyl ether	-	mg/kg	5	ND
Dibromodiphenyl ether	-	mg/kg	5	ND
Tribromodiphenyl ether	-	mg/kg	5	ND
Tetrabromodiphenyl ether	-	mg/kg	5	ND
Pentabromodiphenyl ether	-	mg/kg	5	ND



SGS is pleased to announce the launch of its new online reporting system for RoHS testing. This system is designed to provide a more efficient and user-friendly way for clients to access their test results. The system is available in both English and Chinese. For more information, please contact your local SGS office or visit our website at www.sgslab.com.
 中國檢驗認證集團有限公司
 地址：廣東省廣州市東莞道100號 電話：86-20-82100000 136-02327072 136-02327073
 中國 廣州 德信樓東莞道100號 電話：86-20-82100000 136-02327072 136-02327073
 Member of the SGS Group (SGS SA)

10
2 3 4 31
O-Leading
Win-Win

3. O-Leading

FR4 TG / PI

4. PCB

274-X Cam350 CAD Protel 99se PADS DXP Eagle

5. PCB

AOI PTH AOI E / T