

# O

10 PCB - PCB PCB MCPCB  
 - 24 S / S 48-96 4-8

.025 AVG .020 ..

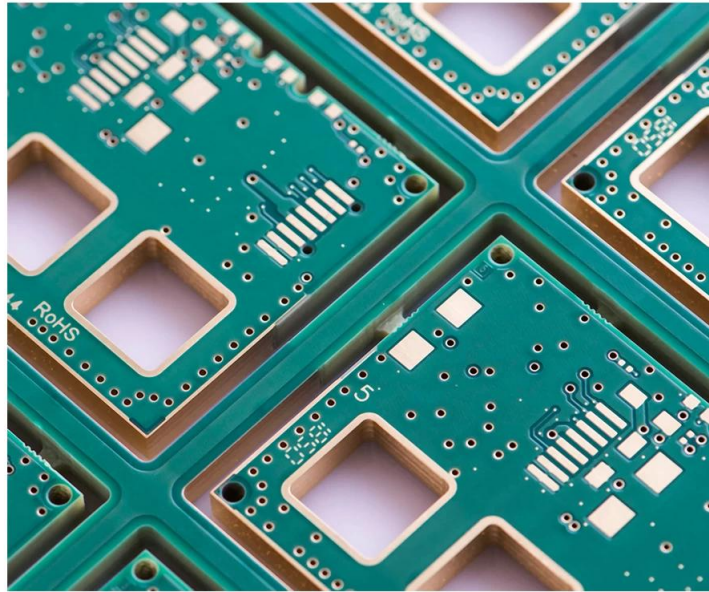
25 /

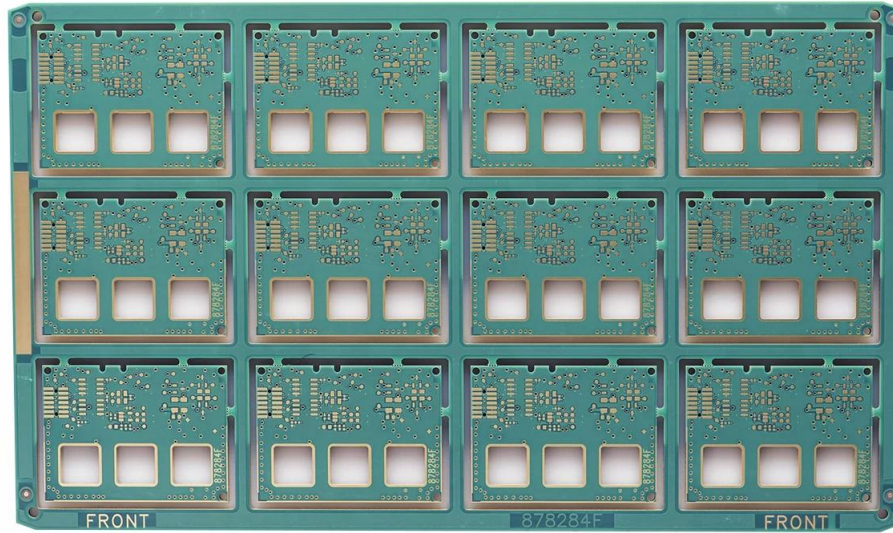
PCB

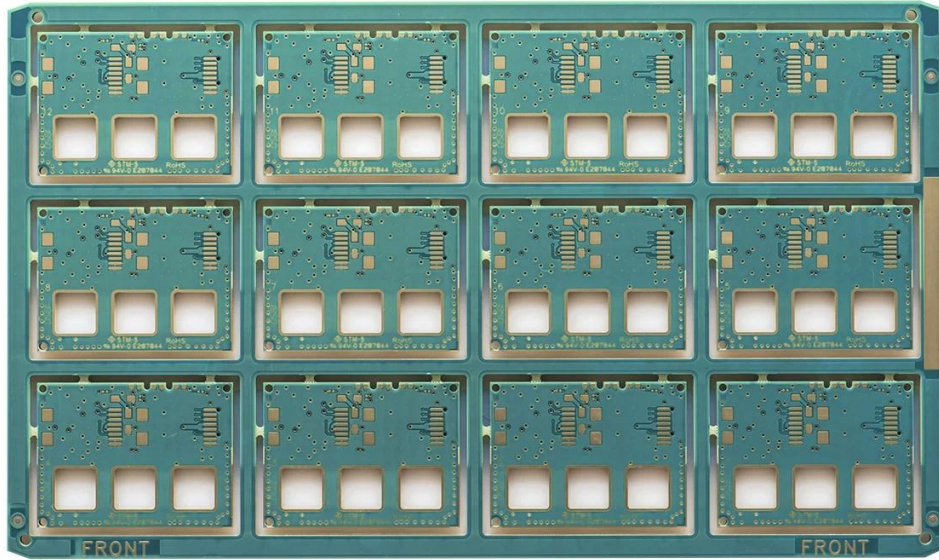
# O

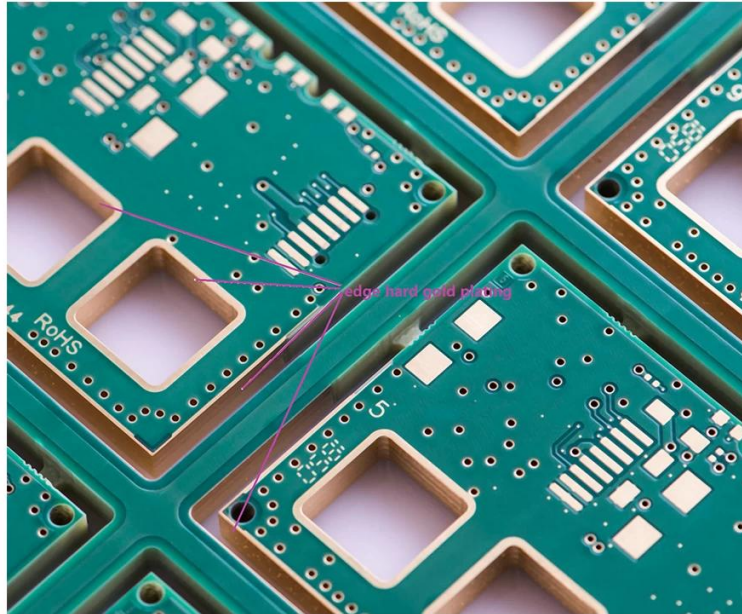
PCB P / N	878284-E
	6L HDI
	FR-4 TG180
THK	3.80mm
THK	1/1/1/1 / 1oz
	0.1MM
	725
w /	8/8
Y / N Tol	N
Au	0.075-0.125UM
	Xmm 51; Ymm 37.7
	Xmm 244; Ymm 145; UPS 12
	N
	CNC

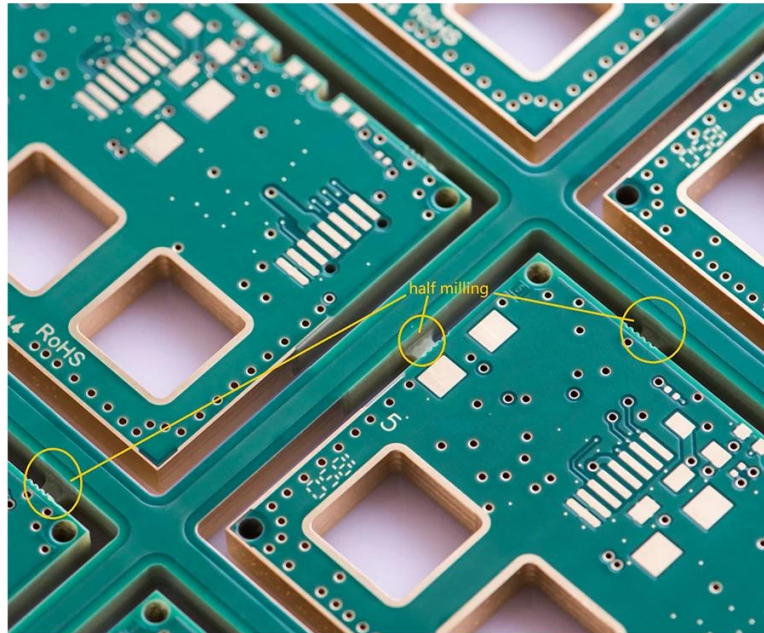
•











[www.o-leading.com](http://www.o-leading.com)

PCB









**QUALITY MANAGEMENT SYSTEM CERTIFICATE**  
 Certificate No: 16118Q10347R05

**We hereby certify that**  
**O-LEADING SUPPLY CHAIN(HK) CO.,LIMITED**  
 Credit No: 61691591-000-07-17-2  
 Registration Add: ROOM 603D 6/F HANG PONT COMMERCIAL BUILDING,31 TONKIN ST,CHEUNG SHA WAN,KL, HK  
 Business Add: 1313 Floor 13 Fortune Building, Danstui Town Huiyang District, Huizhou, Guangdong, China

Has implemented and maintains a **Quality Management System**  
 Which fulfills the requirements of the following standards  
 GB/T19001-2016 idt ISO9001:2015

**Scope of certification**  
 Sales of printed circuit boards

Initial Issuance period: February 27, 2018  
 This certificate is valid during: February 27, 2018 -- February 26, 2021  
 This certificate is invalid without CICC qualified label in the following period

First supervision and audit	Qualified mark	Second supervision and audit	Qualified mark
-----------------------------	----------------	------------------------------	----------------

The certification registration scope shall include those production services scope which fall to be covered by the relevant effective administrative permission and qualification permission required by the state. The effectiveness of this certificate shall be evaluated by annual surveillance audit of CICC. The certificate shall be valid when used together with the surveillance audit conclusion. The related information of this certification can be searched at the public website of company www.cicc.com.cn.

201726 201VZL430354 - Wiring, Printed - Component

**UL ONLINE CERTIFICATIONS DIRECTORY**

**ZPMV2.E490354**  
**Wiring, Printed - Component**

For enhanced search functionality, please visit [UL.com/Products/Database](http://ul.com/Products/Database). Click on a product designation for complete information.

[Page Bottom](#)

**Wiring, Printed - Component**

[See General Information for Wiring, Printed - Components](#)

**O-LEADING SUPPLY CHAIN CO LIMITED**

Fortune Building, Nanheng West Road  
 Room 1313  
 Huizhou, Guangdong 516211, CHINA

E490354

Type	Cond Width			SS/ DS/ Diam	Area	Solder		Diper		Flame	RoHS	C
	Min	Max	Edge			Min	Max	Temp	Class			
Hub/Bayer (mass laminate) printed wiring boards.												
<b>O-LEADING-401</b>	0.2 (0.004)	0.3 (0.012)	34 (1.34)	D6	12.7 (0.5)	260	10	130	V-0	-	-	-
<b>O-LEADING-407</b>	0.08 (0.003)	0.2 (0.008)	17 (0.67)	D5	9.2 (0.4)	260	10	170	V-0	NI	-	-
Hub/Bayer printed wiring boards.												
<b>O-LEADING-408</b>	0.125 (0.005)	0.125 (0.005)	12 (0.47) 31(1.25)	D6	50.8 (2.0)	260	20	130	V-0	NI	-	-
Single layer printed wiring boards.												
<b>O-LEADING-002</b>	0.76 (0.015)	1.14 (0.045)	34 (1.34)	S5	19.1 (0.8)	260	10	105	V-0	NI	-	-
<b>O-LEADING-003</b>	0.38 (0.015)	1.14 (0.045)	34 (1.34)	S5	19.1 (0.8)	260	10	130	V-0	▲	-	-
<b>O-LEADING-033</b>	0.15 (0.006)	0.3 (0.012)	34 (1.34)	S5	25.4 (1.0)	260	10	120	V-0	NI	-	-
<b>O-LEADING-205</b>	0.1 (0.004)	0.3 (0.012)	34 (1.34)	D6	69.6 (2.7)	260	10	130	V-0	NI	-	-
<b>O-LEADING-206</b>	0.15 (0.006)	0.33 (0.013)	17 (0.67)	D5	69.6 (2.7)	260	10	130	V-0	NI	-	-

\* - CTI marking is optional and may be marked on the printed wiring board.

Marking: Company name or file number and type designation. May be followed by a suffix to denote factory identification or burning test classification.  
 Last updated on 2017-01-27

Questions? [Print this page](#) [Terms of Use](#) [Page Top](#)

<http://www.ul.com/Products/Database/Products/201VZL430354> - Wiring, Printed - Component



**Test Report**

No. CANEC1805164701

Date: 03 Apr 2018

Page 2 of 8

Test Results:

**Test Part Description:**

**Specimen No.** SH1  
**SGS Sample ID** CAN18-051647.001  
**Description** Green "PCB"

**Remarks:**

- (1) 1 mg/kg = 1 ppm = 0.0001%
- (2) MDL = Method Detection Limit
- (3) ND = Not Detected (< MDL)
- (4) "-" = Not Regulated

**RoHS Directive (EU) 2015/863 amending Annex II to Directive 2011/65/EU**

Test Method: With reference to IEC 62321-4:2014+A1:2017, IEC62321-5:2013, IEC62321-7-2:2017, IEC 62321-6:2015 and IEC62321-8:2017, analyzed by ICP-OES, UV-Vis and GC-MS.

Test Item(s)	Limit	Unit	MDL	Det
Cadmium (Cd)	100	mg/kg	2	ND
Lead (Pb)	1,000	mg/kg	2	9
Mercury (Hg)	1,000	mg/kg	2	ND
Hexavalent Chromium (CrVI)	1,000	mg/kg	8	ND
Sum of PBBs	1,000	mg/kg	-	ND
Monobromobiphenyl	-	mg/kg	5	ND
Dibromobiphenyl	-	mg/kg	5	ND
Tribromobiphenyl	-	mg/kg	5	ND
Tetrabromobiphenyl	-	mg/kg	5	ND
Pentabromobiphenyl	-	mg/kg	5	ND
Hexabromobiphenyl	-	mg/kg	5	ND
Heptabromobiphenyl	-	mg/kg	5	ND
Octabromobiphenyl	-	mg/kg	5	ND
Nonabromobiphenyl	-	mg/kg	5	ND
Decabromobiphenyl	-	mg/kg	5	ND
Sum of PBDEs	1,000	mg/kg	-	ND
Monobromodiphenyl ether	-	mg/kg	5	ND
Dibromodiphenyl ether	-	mg/kg	5	ND
Tribromodiphenyl ether	-	mg/kg	5	ND
Tetrabromodiphenyl ether	-	mg/kg	5	ND
Pentabromodiphenyl ether	-	mg/kg	5	ND



SGS is pleased to announce the launch of its new online platform for the collection of test results. The platform is designed to provide a secure and efficient way for clients to access their test results. The platform is available in multiple languages and is accessible 24/7. For more information, please contact your account manager or visit [www.sgslab.com](http://www.sgslab.com).

Member of the SGS Group (SGS SA)



#### 4. PCB

Gerber 274-X Cam350 CAD Protel 99se PADS DXP Eagle

#### PCB

→ → AOI → → PTH → → → → AOI → → E / T →