

# O

10 PCB - PCB MCPB  
 - 24 S / S 48-96 4-8 PCB

.025 AVG .020

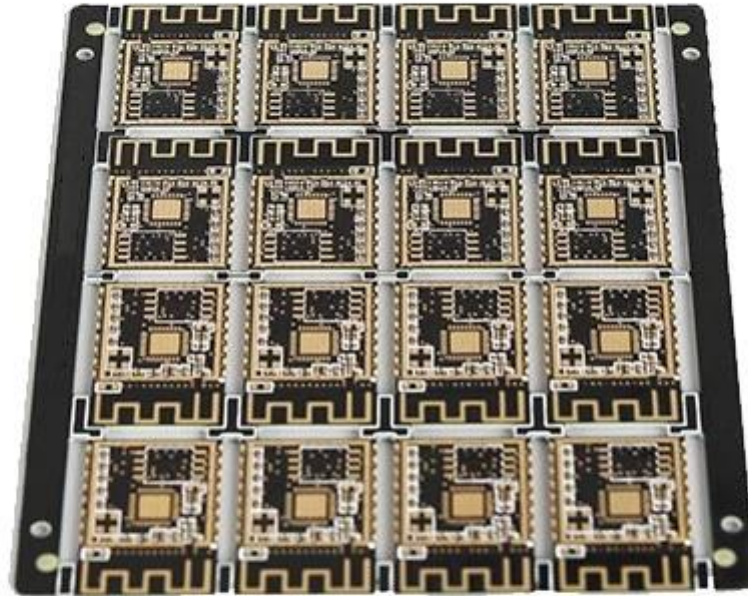
25

PCB

# O

PCB P / N	PCB
	4L
	FR-4 TG170
THK	1.6mm
THK	1/1/1 / 1oz
	0.3MM
	98
w / s	5/5
Y / N Tol	N
	Au 0.05-0.10UM
	/e
	X mm 21; Y mm 12
	X mm 90; Y mm 68; UPS 16
	N
	CNC





[www.o-leading.com](http://www.o-leading.com)

□□□□□□

□□□□PCB□□□□









**QUALITY MANAGEMENT SYSTEM CERTIFICATE**

Certificate No: 16118Q10347R05

**We hereby certify that**

**O-LEADING SUPPLY CHAIN(HK) CO.,LIMITED**

Credit No: 61691591-000-07-17-2

Registration Add: ROOM 603D 6/F HANG PONG COMMERCIAL BUILDING, 31 TONKIN ST. CHEUNG SHA WAN, KL, HK

Business Add: 1313 Floor 13 Fortune Building, Danstui Town Huiyang District, Huizhou, Guangdong, China

Has implemented and maintains a **Quality Management System** Which fulfills the requirements of the following standards  
GB/T19001-2016 idt ISO9001:2015

**Scope of certification**  
Sales of printed circuit boards

Initial Issuance period: February 27, 2018  
This certificate is valid during: February 27, 2018 -- February 26, 2021  
This certificate is invalid without CICC qualified label in the following period

First supervision and audit	Qualified mark	Second supervision and audit	Qualified mark
-----------------------------	----------------	------------------------------	----------------

The certification registration scope does not include those production services which fail to be covered by the relevant effective administrative provisions and qualification provisions required by the state. The effectiveness of this certificate shall be evaluated by annual surveillance audit of CICC. The certificate shall be valid when used together with the surveillance audit conclusion. The related information of this certification can be searched at the public website of [www.cicc.com.cn](http://www.cicc.com.cn).






201726      ZPMV2.E490354 - Wiring, Printed - Component

**UL ONLINE CERTIFICATIONS DIRECTORY**

**ZPMV2.E490354**  
Wiring, Printed - Component

For enhanced search functionality, please visit [UL.com](http://ul.com) Family of Databases. Click on a product designation for complete information.

Page Bottom

**Wiring, Printed - Component**

See General Information for Wiring, Printed - Components

**O-LEADING SUPPLY CHAIN CO LIMITED**      4190354  
Fortune Building, Nanheng West Road  
Room 1313  
Huizhou, Guangdong 516211, CHINA

Cond Width		SS/ DS/ Diam		Area	Solder Limits	Diper	Temp	Flame	RoHS	C
Min	Edge	Thk	DS/ Diam	mm <sup>2</sup> (in <sup>2</sup> )	mm(in)	C	sec	C	Class	DSR
<b>Multi-layer (mass laminate) printed wiring boards.</b>										
<b>O-LEADING-401</b>										
0.2 (0.004)	0.3 (0.012)	34 (1.34)	D6	12.7 (0.5)	260	10	130	V-0	-	-
<b>O-LEADING-407</b>										
0.08 (0.003)	0.2 (0.008)	17 (0.67)	D5	9.2 (0.4)	260	10	170	V-0	NI	-
<b>Multi-layer printed wiring boards.</b>										
<b>O-LEADING-408</b>										
0.125 (0.005)	0.125 (0.005)	12 (0.47) to 1.35	D6	50.8 (2.0)	260	20	130	V-0	NI	*
<b>Single layer printed wiring boards.</b>										
<b>O-LEADING-002</b>										
0.76 (0.03)	1.14 (0.045)	34 (1.34)	S5	19.1 (0.8)	260	10	105	V-0	NI	-
<b>O-LEADING-003</b>										
0.38 (0.015)	1.14 (0.045)	34 (1.34)	S5	19.1 (0.8)	260	10	130	V-0	▲	-
<b>O-LEADING-033</b>										
0.15 (0.006)	0.3 (0.012)	34 (1.34)	S5	25.4 (1.0)	260	10	120	V-0	NI	-
<b>O-LEADING-205</b>										
0.1 (0.004)	0.3 (0.012)	34 (1.34)	D6	69.6 (2.7)	260	10	130	V-0	NI	-
<b>O-LEADING-206</b>										
0.15 (0.006)	0.33 (0.013)	17 (0.67)	D5	69.6 (2.7)	260	10	130	V-0	NI	-

\* - CTI marking is optional and may be marked on the printed wiring board.

Marking: Company name or file number and type designation. May be followed by a suffix to denote factory identification or burning test classification. Last updated on 2017-01-27

Questions?      Print this page      Terms of Use      Page Top

<http://www.ul.com/ulcertification/60347R05/51816Q01163R05>      ZPMV2.E490354      Wiring, Printed - Component      10

**SGS**

**Test Report**      No. CANEC1805164701      Date: 03 Apr 2018      Page 2 of 8

Test Results:

Test Part Description:

Specimen No.	SGS Sample ID	Description
SN1	CAN18-051647.001	Green "PCB"

Remarks:

(1) 1 mg/kg = 1 ppm = 0.0001%

(2) MDL = Method Detection Limit

(3) ND = Not Detected (< MDL)

(4) "-" = Not Regulated

**RoHS Directive (EU) 2015/863 amending Annex II to Directive 2011/65/EU**

Test Method: With reference to IEC 62321-4:2014+A1:2017, IEC 62321-5:2013, IEC 62321-7-2:2017, IEC 62321-6:2015 and IEC 62321-8:2017, analyzed by ICP-OES, UV-Vis and GC-MS.

Test Item(s)	Limit	Unit	MCL	Det
Cadmium (Cd)	100	mg/kg	2	ND
Lead (Pb)	1,000	mg/kg	2	9
Mercury (Hg)	1,000	mg/kg	2	ND
Hexavalent Chromium (CrVI)	1,000	mg/kg	8	ND
Sum of PBBs	1,000	mg/kg	-	ND
Monobromobiphenyl	-	mg/kg	5	ND
Dibromobiphenyl	-	mg/kg	5	ND
Tribromobiphenyl	-	mg/kg	5	ND
Tetrabromobiphenyl	-	mg/kg	5	ND
Pentabromobiphenyl	-	mg/kg	5	ND
Hexabromobiphenyl	-	mg/kg	5	ND
Heptabromobiphenyl	-	mg/kg	5	ND
Octabromobiphenyl	-	mg/kg	5	ND
Nonabromobiphenyl	-	mg/kg	5	ND
Decabromobiphenyl	-	mg/kg	5	ND
Sum of PBDEs	1,000	mg/kg	-	ND
Monobromodiphenyl ether	-	mg/kg	5	ND
Dibromodiphenyl ether	-	mg/kg	5	ND
Tribromodiphenyl ether	-	mg/kg	5	ND
Tetrabromodiphenyl ether	-	mg/kg	5	ND
Pentabromodiphenyl ether	-	mg/kg	5	ND

Member of the SGS Group (SGS SA)



5. PCB

→ → AOI → → PTH → → → → E / T →