

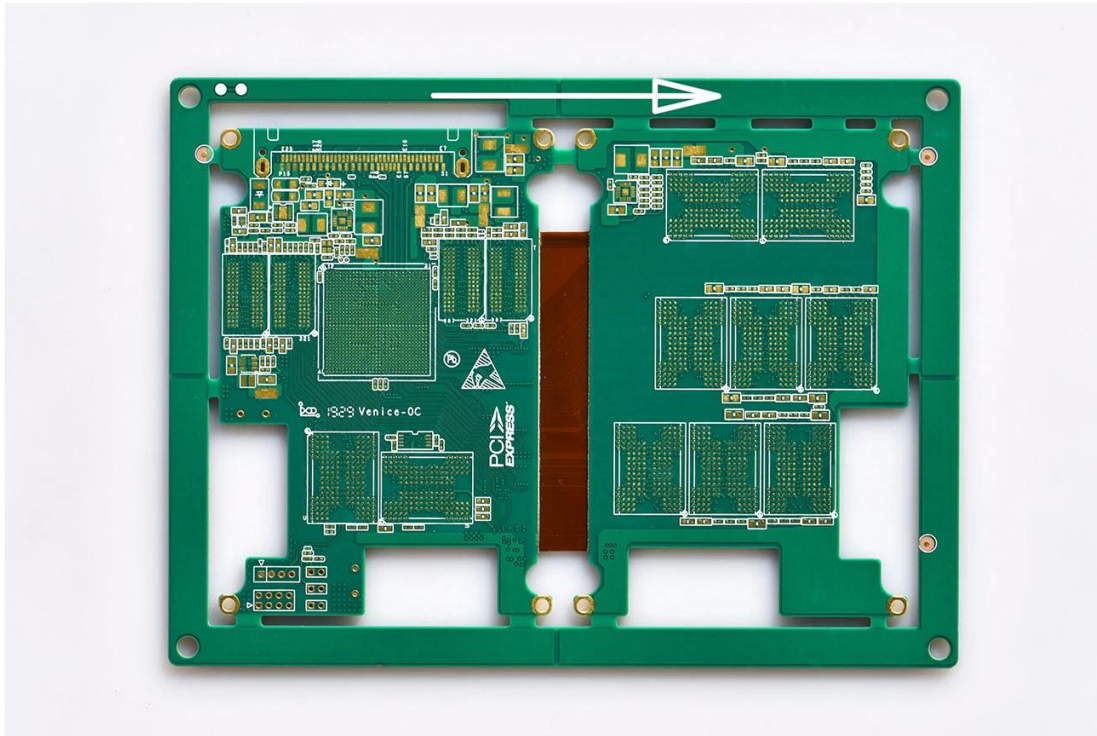
O

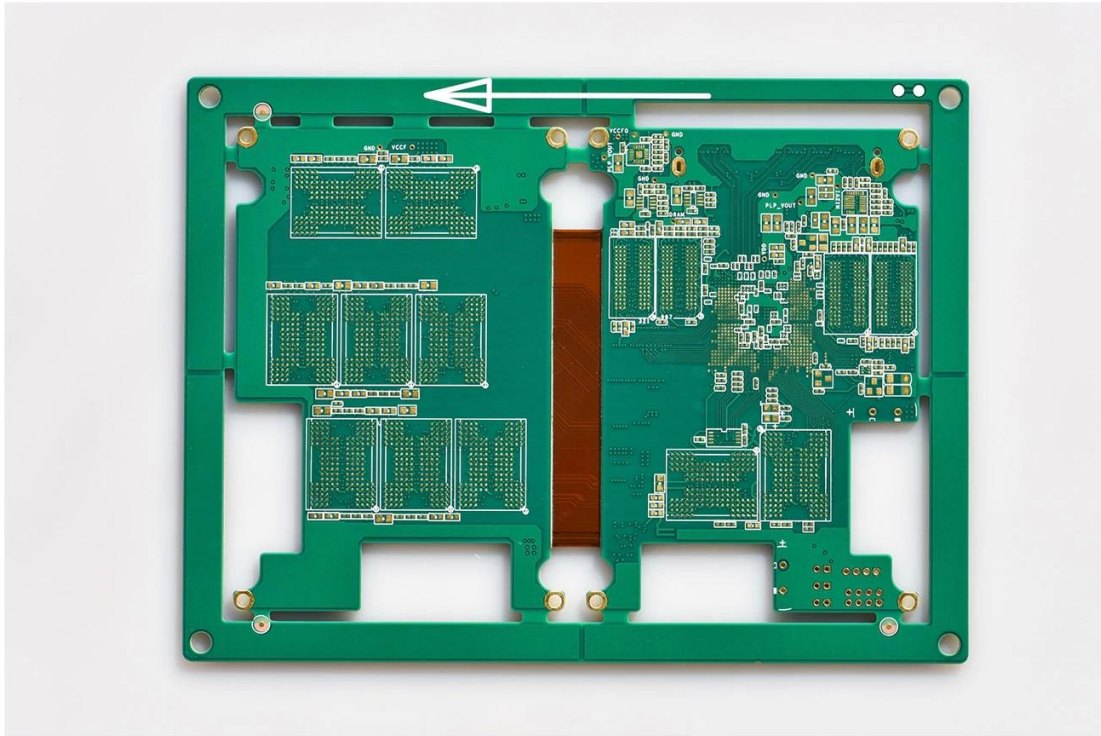
10 PCB - PCB MCPCB S/ S 24 4-8 48-96 **PCB**

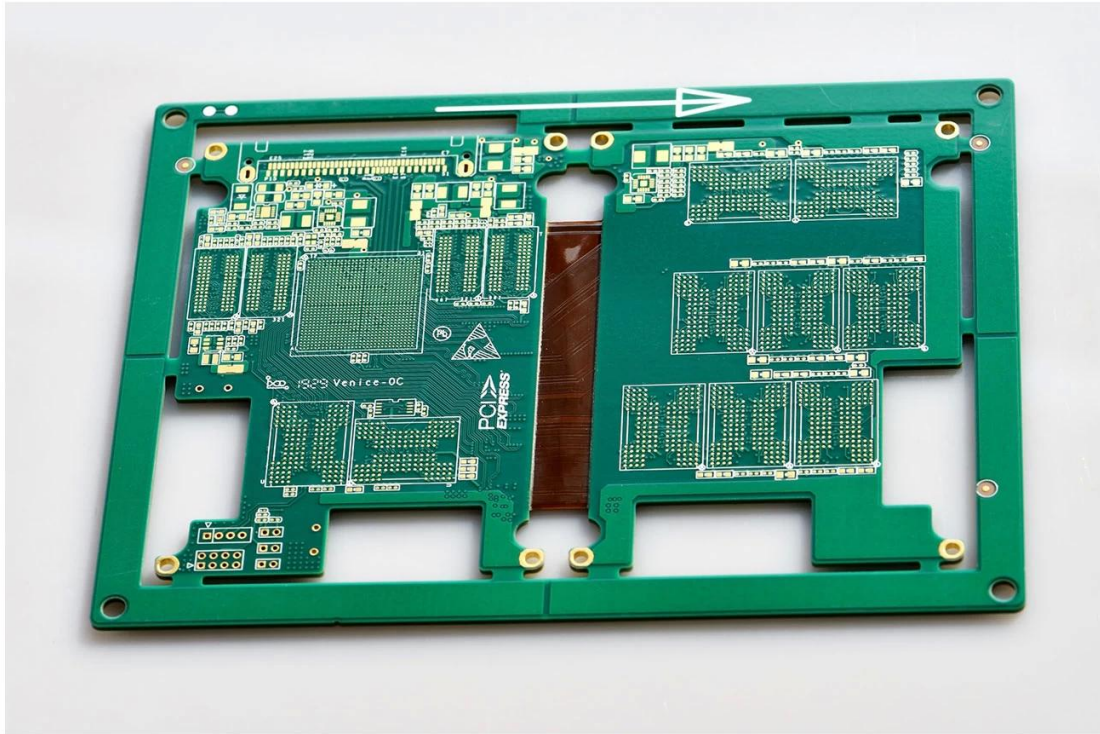
.025 AVG .020 25 PCS / **PCB**

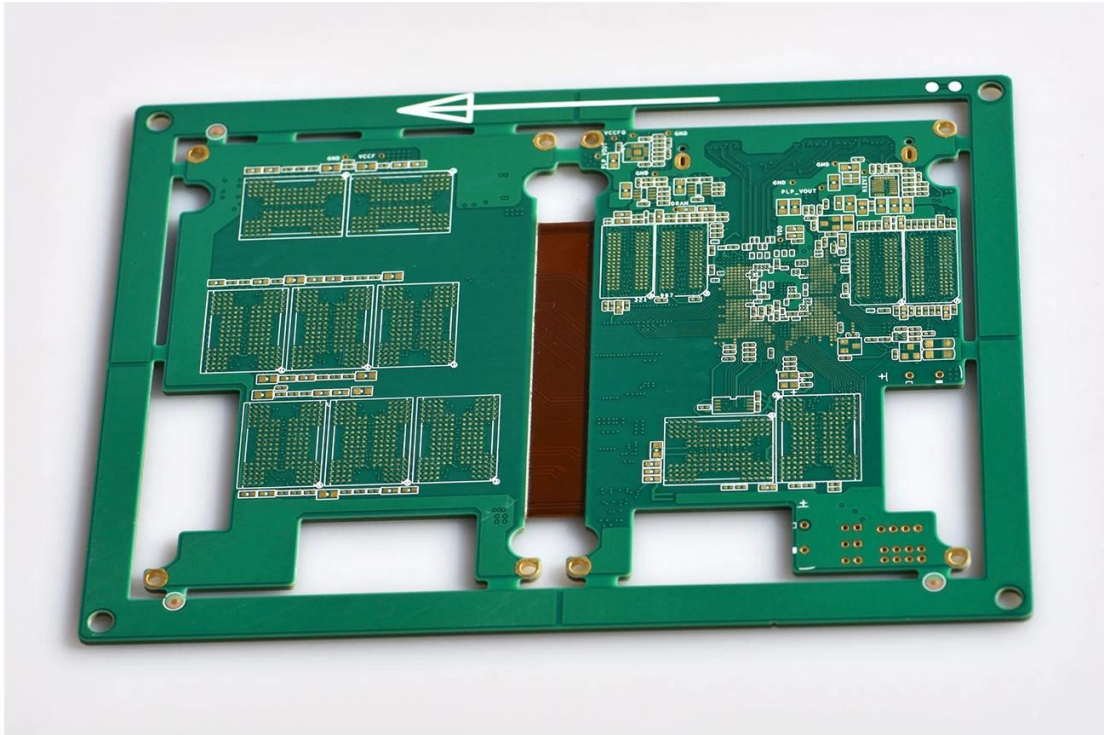
O

PCB P / N	EET-PCI_5823A
	8L L1 L2 L3 L6 L7 L8 L4 L5
	FR-4 TG170
thk	1.2mm
thk	1 / H / H / H / H / H / 1oz
	0.1MM POFV
	536
w / s	3 / 3mil
Y / N	Y / N Tol Y50Ω 90Ω 100Ω
	ENIG Au 0.05-0.127um
	/
	X mm 142.00; Y mm 106.00
	Dim X mm 165.00; Dim Y mm 126.00; No Of UPS 1
	N
	CNC









www.o-leading.com

AXI Testing supplier China









201726 201VZL430354 - Wiring, Printed - Component

UL ONLINE CERTIFICATIONS DIRECTORY

ZPMV2.E490354
Wiring, Printed - Component

For enhanced search functionality, please visit ul.com/Products/Databases.
Click on a product designation for complete information.
[Page Bottom](#)

Wiring, Printed - Component

[See General Information for Wiring, Printed - Components](#)

O-LEADING SUPPLY CHAIN CO LIMITED

Fortune Building, Nanheng West Road
Room 1313
Huizhou, Guangdong 516211, CHINA

E490354

	Cond Width			SS/ DS/	Area Diam	Solder Limits	Dper Temp	Flame Class	RoHS DSR	C
	Min Edge	Min Cond	Max Thk							
Hull/Bayer (mass laminate) printed wiring boards.										
O-LEADING-401	0.2 (0.004)	0.3 (0.012)	34 (1.34)	D6	12.7 (0.5)	260	10	130	V-0	-
O-LEADING-407	0.08 (0.003)	0.2 (0.008)	17 (0.67)	D5	9.2 (0.4)	260	10	170	V-0	NI
Hull/Bayer printed wiring boards.										
O-LEADING-408	0.125 (0.005)	0.125 (0.005)	12 (0.47) min:1.35	D6	50.8 (2.0)	260	20	130	V-0	NI
Single layer printed wiring boards.										
O-LEADING-002	0.76 (0.015)	1.14 (0.045)	34 (1.34)	S5	19.1 (0.8)	260	10	105	V-0	NI
O-LEADING-003	0.38 (0.015)	1.14 (0.045)	34 (1.34)	S5	19.1 (0.8)	260	10	130	V-0	▲
O-LEADING-033	0.15 (0.006)	0.3 (0.012)	34 (1.34)	S5	25.4 (1.0)	260	10	120	V-0	NI
O-LEADING-205	0.1 (0.004)	0.3 (0.012)	34 (1.34)	D6	69.6 (2.7)	260	10	130	V-0	NI
O-LEADING-206	0.15 (0.006)	0.33 (0.013)	17 (0.67)	D5	69.6 (2.7)	260	10	130	V-0	NI

* - CTI marking is optional and may be marked on the printed wiring board.

Marking: Company name or file number and type designation. May be followed by a suffix to denote factory identification or burning test classification.
Last updated on 2017-01-27

Questions? [Print this page](#) [Terms of Use](#) [Page Top](#)



Test Report

No. CANEC1805164701

Date: 03 Apr 2018

Page 2 of 8

Test Results:

Test Part Description:

Specimen No. **SGS Sample ID** **Description**
SNI1 CAN18-051647.001 Green "PCB"

Remarks:

- (1) 1 mg/kg = 1 ppm = 0.0001%
- (2) MDL = Method Detection Limit
- (3) ND = Not Detected (< MDL)
- (4) "-" = Not Regulated

RoHS Directive (EU) 2015/863 amending Annex II to Directive 2011/65/EU

Test Method: With reference to IEC 62321-4:2014+A1:2017, IEC62321-5:2013, IEC62321-7-2:2017, IEC 62321-6:2015 and IEC62321-8:2017, analyzed by ICP-OES, UV-Vis and GC-MS.

Test Item(s)	Limit	Unit	MDL	Det
Cadmium (Cd)	100	mg/kg	2	ND
Lead (Pb)	1,000	mg/kg	2	9
Mercury (Hg)	1,000	mg/kg	2	ND
Hexavalent Chromium (CrVI)	1,000	mg/kg	8	ND
Sum of PBBs	1,000	mg/kg	-	ND
Mono-bromobiphenyl	-	mg/kg	5	ND
Oli-bromobiphenyl	-	mg/kg	5	ND
Tri-bromobiphenyl	-	mg/kg	5	ND
Tetra-bromobiphenyl	-	mg/kg	5	ND
Penta-bromobiphenyl	-	mg/kg	5	ND
Hexa-bromobiphenyl	-	mg/kg	5	ND
Hepta-bromobiphenyl	-	mg/kg	5	ND
Octa-bromobiphenyl	-	mg/kg	5	ND
Nona-bromobiphenyl	-	mg/kg	5	ND
Deca-bromobiphenyl	-	mg/kg	5	ND
Sum of PBDEs	1,000	mg/kg	-	ND
Mono-bromodiphenyl ether	-	mg/kg	5	ND
Di-bromodiphenyl ether	-	mg/kg	5	ND
Tri-bromodiphenyl ether	-	mg/kg	5	ND
Tetra-bromodiphenyl ether	-	mg/kg	5	ND
Penta-bromodiphenyl ether	-	mg/kg	5	ND



SGS is pleased to announce the launch of its new online platform for the collection of test results. The platform is designed to provide a secure and efficient way for clients to upload their test results and for SGS to manage and analyze the data. The platform is available in multiple languages and can be accessed from any device. For more information, please contact your local SGS office or visit www.sgs.com.

00000000	160000OEM PCB00000
000000	7-1200



- O...
 1.The...ISO 9001 2008...
 2....
 3....X...AOI...ICT...
 4....
 5....
- O...
 10...2...3...4...31...
 O-Leading...
 Win-Win...
- O-Leading...
 FR4 TG...PI
- PCB...
 274-X...Cam350 CAD Protel 99se PADS DXP Eagle

5. PCB

→ → AOI → → PTH → → → E / T →