

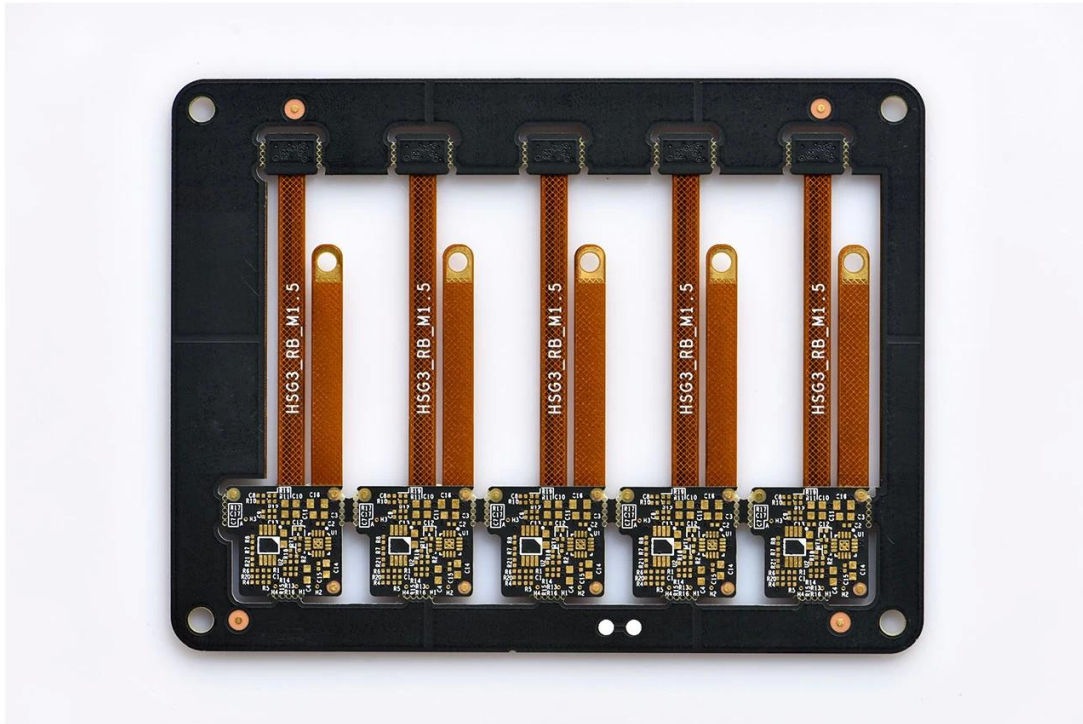
O

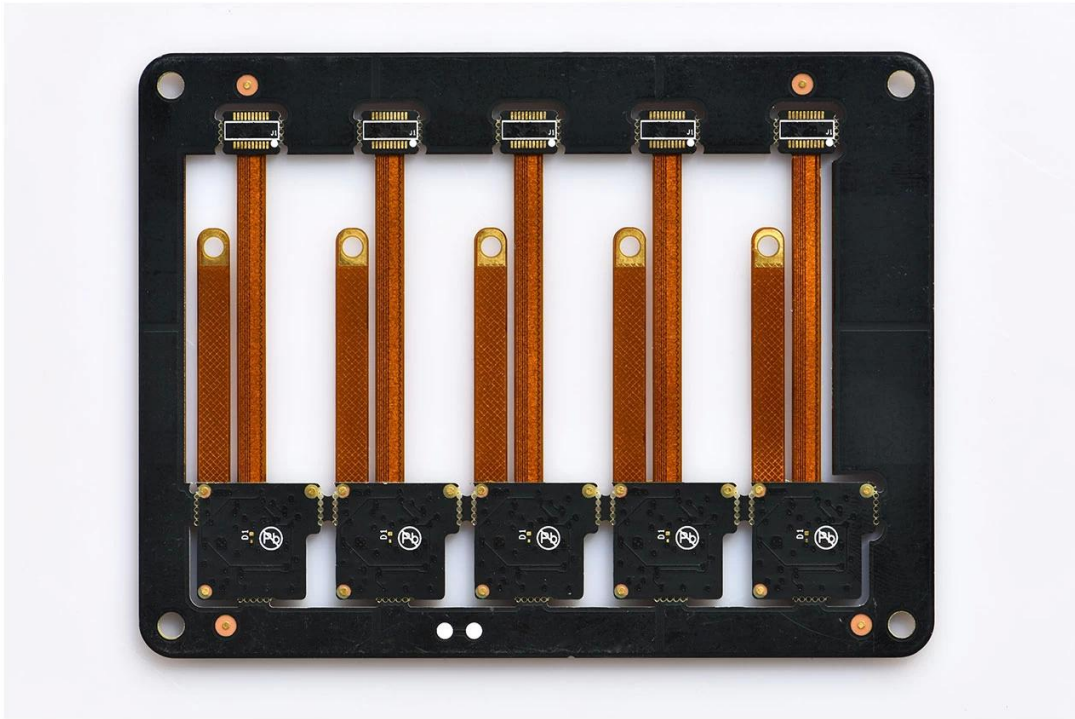
10 PCB - PCB MCPCB S/ S 24 4-8 48-96 **PCB**

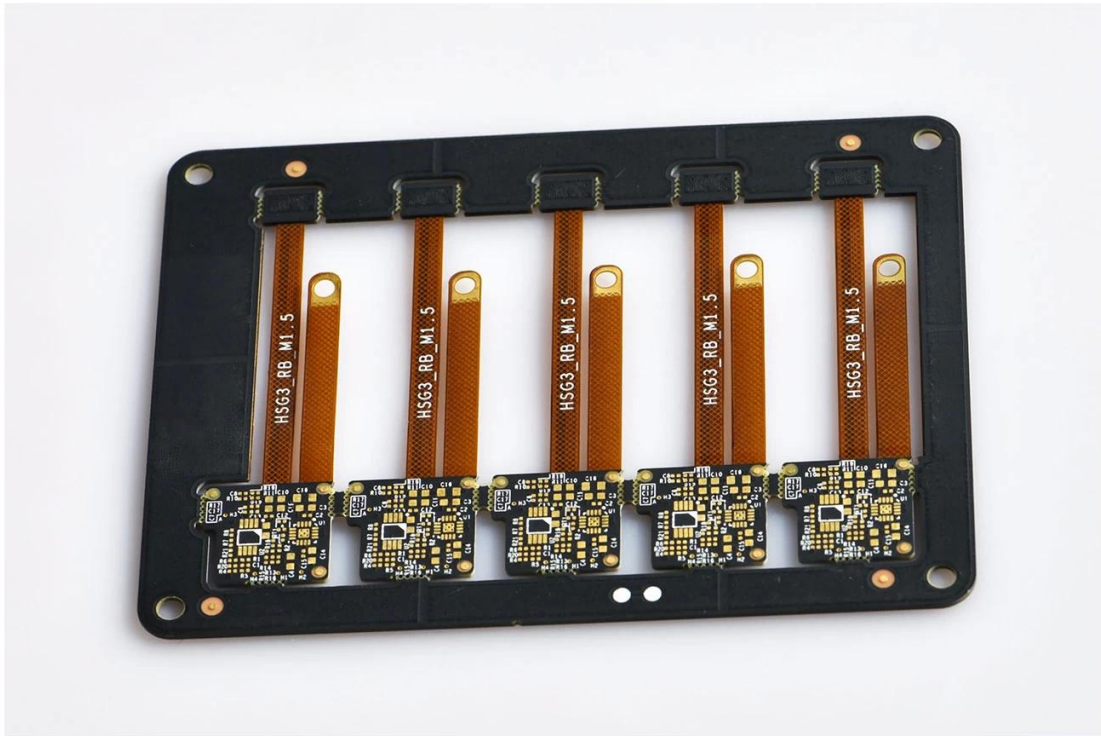
.025 AVG .020
 25 PCS /
PCB

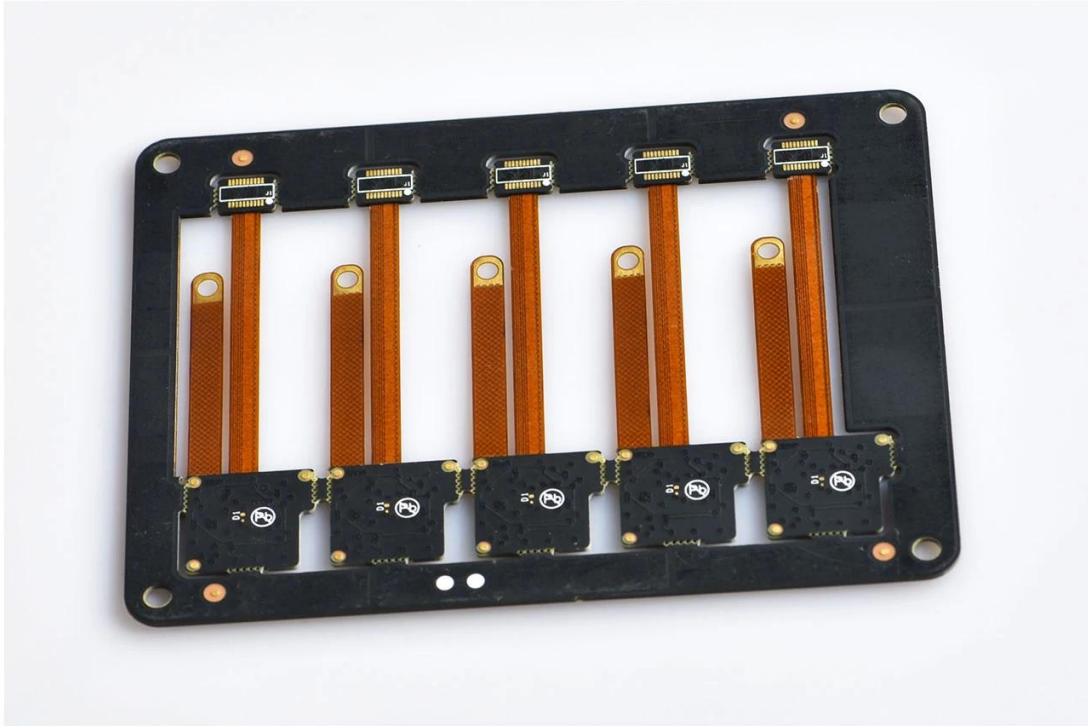
PCB

PCB P / N	HSG3_RB_M1.5
	4L L1 L4 L2 L3
	FR-4 TG170
thk	0.80mm
thk	1 / H / H / 1oz
	0.2MM
	97
w / s	4 / 4mil
Y / N	N
	ENIG Au 0.05-0.10um
	X mm 16.50; Y mm 77.00
	Dim X mm 119.30; Dim Y mm 93.00; No Of UPS 5
	N
	CNC









www.o-leading.com

PCB





5. PCB

→ → AOI → → PTH → → → E / T →