

# O-leading

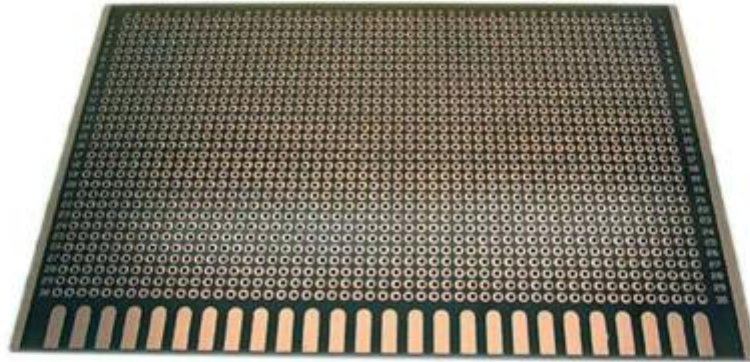
10 PCB PCB MCPCB  
 S/ S24 4 8 48 96

.025 AVG .020 ..

25/

## 

PCB P / N	LE-150
	1L
	3.2
THK	1
	/
	/
w / s	/
S / N Tol	N
	ENIG Au 0.05um
	X mm 27; Y mm 45
	X mm 27; Y mm 135; UPS 3
	N
	CNC +



[www.o-leading.com](http://www.o-leading.com)

PCB







# PCB

PCB	16PCB
	7-12



# PCB

### PCB

1. O-Leading

1. ISO 9001 2008
- 2.
3. XAOI ICT
- 4.
- 5.

2. O-Leading

10 2 3 4 31 O-Leading

3. O-Leading

FR4 PCB TG / PI

4. PCB

274-X Cam350 CAD Protel 99se PADS DXP Eagle

5. PCB

→ → AOI → → PTH → → → → AOI → → E / T →