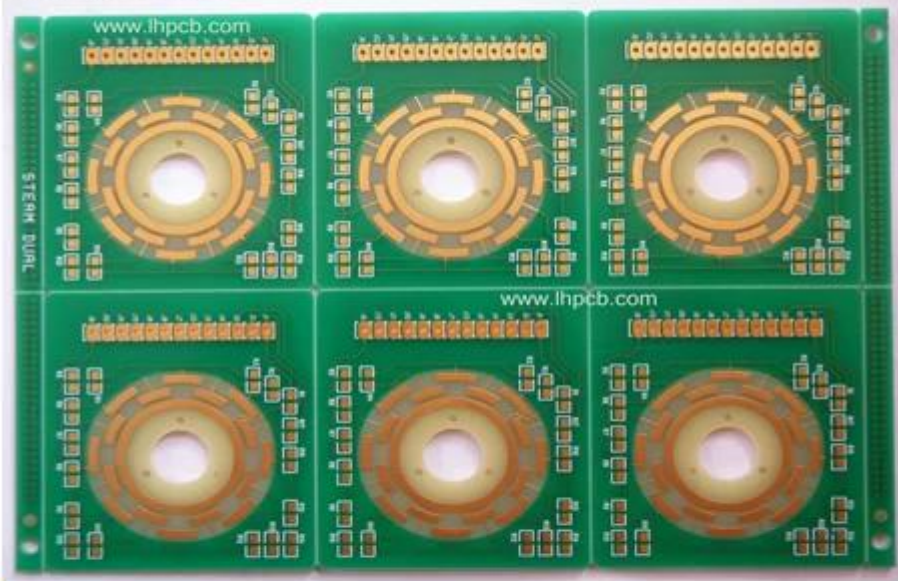




Lyr	Image	Foil	Flame
COMP		0.5oz	Foil 1/2oz
			R-5670(G) 3313 RC54%
L2		0.5oz	
L3		0.5oz	R-5775(G) 0.150mm H/H 37"*49"(1080*2)(RTF)
			R-5670(G) 1078 RC68%
			R-5670(G) 1035 RC70%
L4		0.5oz	
L5		0.5oz	R-5775(G) 0.150mm H/H 37"*49"(1080*2)(RTF)
			R-5670(G) 1078 RC68%
			R-5670(G) 1035 RC70%
L6		0.5oz	
L7		0.5oz	R-5775(G) 0.150mm H/H 37"*49"(1080*2)(RTF)
			R-5670(G) 1078 RC68%
			R-5670(G) 1035 RC70%
L8		0.5oz	
L9		2oz	R-5775(G) 0.140mm H/2 37"*49"(1078*2)(RTF)
			R-5670(G) 2116 RC54%
			R-5670(G) 2116 RC54%
			R-5670(G) 2116 RC54%
L10		2oz	
L11		0.5oz	R-5775(G) 0.140mm H/2 37"*49"(1078*2)(RTF)
			R-5670(G) 1035 RC70%
			R-5670(G) 1078 RC68%
L12		0.5oz	
L13		0.5oz	R-5775(G) 0.150mm H/H 37"*49"(1080*2)(RTF)
			R-5670(G) 1035 RC70%
			R-5670(G) 1078 RC68%
L14		0.5oz	
L15		0.5oz	R-5775(G) 0.150mm H/H 37"*49"(1080*2)(RTF)
			R-5670(G) 1035 RC70%
			R-5670(G) 1078 RC68%
L16		0.5oz	
L17		0.5oz	R-5775(G) 0.150mm H/H 37"*49"(1080*2)(RTF)
			R-5670(G) 3313 RC54%
SOLD		0.5oz	Foil 1/2oz

**O-LEADING**  
To Be Reliable, To Be Valuable



[www.o-leading.com](http://www.o-leading.com)

**O-LEADING**  
To Be Reliable, To Be Valuable



[www.o-leading.com](http://www.o-leading.com)





[www.o-leading.com](http://www.o-leading.com)

[HDI PCB](#)

[PCB](#)















Gerber 274-X Cam350 CAD Protel 99se PADS DXP Eagle

### 5. PCB

→ AOI → PTH → AOI → E / T