

O-PCB

10 PCB - PCB MCPCB. WE 48~96 48 4~8

.025 .020

25/

PCB

PCB

PCB	PCBA	o
PCB	PCBA	FR-4
OSP		0.5oz-5oz.
LED		0.1-5mm
PCB		0.2mm
ISO9001 UL RoHS SGS		0.2mm
		0.2mm
		0.1~10
0.01m3~10m3	mo	10
0.01kg -5kg	Q / CTN	10pcs-100

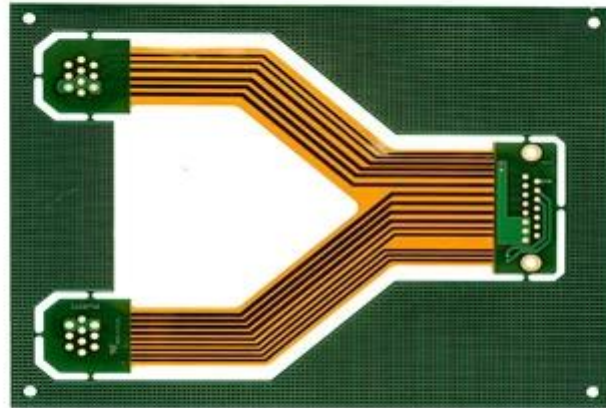
PCB

16 OEM PCB
7-12days.

PCB

16 OEM PCB

PCB	2014.		2015 2016		2017 2018	
	PCB	PCB	PCB	PCB	PCB	PCB
PCB	32.	42.	38.	44	42.	48
PCB/PCB μm	50/50	40/45	40/45	40/40	35/40	35/35
PCB mm	0.15.	0.10	0.15.	0.10	0.15.	0.10
PTH	14 1	16 1	16 1	18 1	18 1	20 1
N + C + N.	4 + C + 4	5 + C + 5	5 + C + 5	6 + C + 6	5 + C + 5	6 + C + 6
PCB	5 + 2 + 5	6 + 2 + 6	5 + 2 + 5	6 + 2 + 6	5 + 2 + 5	6 + 2 + 6
PCB		-		-		-
PCB μm	50.	40.	40.	30.	40.	30.



www.o-leading.com

[HDI PCB](#) [LED PCB](#)

[PCB](#)







QUALITY MANAGEMENT SYSTEM CERTIFICATE

Certificate No.: 16118Q10347R05

We hereby certify that
O-LEADING SUPPLY CHAIN(HK) CO.,LIMITED
 Credit No.: 61691591-000-07-17-2
 Registration Add: ROOM 603D 6/F HANG PONT COMMERCIAL BUILDING,31 TONKIN ST,CHEUNG SHA WAN,KL, HK
 Business Add: 1313 Floor 13 Fortune Building, Danstui Town Huiyang District, Huizhou, Guangdong, China

Has implemented and maintains a **Quality Management System**
 Which fulfills the requirements of the following standards
 GB/T19001-2016 idt ISO9001:2015

Scope of certification
 Sales of printed circuit boards

Initial Issuance period: February 27, 2018
 This certificate is valid during: February 27, 2018 -- February 26, 2021
 This certificate is invalid without CICC qualified label in the following period

First supervision and audit	Qualified mark	Second supervision and audit	Qualified mark
-----------------------------	----------------	------------------------------	----------------

The certification registration scope does not include those products/services scopes which fail to be covered by the relevant effective administrative permission and qualification permission required by the state. The effectiveness of this certificate shall be evaluated by annual surveillance audit of CICC. The certificate shall be valid when used together with the surveillance audit conclusion. The related information of this certification can be searched at the public website of company www.cicc.com.cn.

201726 201VZL430354 - Wiring, Printed - Component

UL ONLINE CERTIFICATIONS DIRECTORY

ZPMV2.E490354
Wiring, Printed - Component

For enhanced search functionality, please visit [UL's Global Databases](#).
 Click on a product designation for complete information.
[Page Bottom](#)

Wiring, Printed - Component

See General Information for Wiring, Printed - Components E490354

O-LEADING SUPPLY CHAIN CO LIMITED
 Fortune Building, Nanheng West Road
 Room 1313
 Huizhou, Guangdong 516211, CHINA

	Cond Width			SS/ DS/	Area DS/ Diam	Solder		Diper		Flame	RoHS	C
	Min	Max	Max			Min	Max	Min	Max			
Min	Edge	Thk	DS/	Thk	DS/	Temp	Class	DSR	I			
Typc	max(in)	mm(in)	mic(mil)	DSO	max(in)	C	sec	C	Class	DSR	I	
Multi-layer (mass laminate) printed wiring boards.												
O-LEADING-401												
	0.2 (0.004)	0.3 (0.012)	34 (1.34)	D6	12.7 (0.5)	260	10	130	V-0	-	-	
O-LEADING-407												
	0.08 (0.003)	0.2 (0.008)	17 (0.67)	D5	9.2 (0.4)	260	10	130	V-0	NI	-	
Multi-layer printed wiring boards.												
O-LEADING-408												
	0.125 (0.005)	0.125 (0.005)	12 (0.47) 31(1.25)	D6	50.8 (2.0)	260	20	130	V-0	NI	*	
Single layer printed wiring boards.												
O-LEADING-002												
	0.76 (0.015)	1.14 (0.045)	34 (1.34)	S5	19.1 (0.8)	260	10	105	V-0	NI	-	
O-LEADING-003												
	0.38 (0.015)	1.14 (0.045)	34 (1.34)	S5	19.1 (0.8)	260	10	130	V-0	▲	-	
O-LEADING-033												
	0.15 (0.006)	0.3 (0.012)	34 (1.34)	S5	25.4 (1.0)	260	10	120	V-0	NI	-	
O-LEADING-205												
	0.1 (0.004)	0.3 (0.012)	34 (1.34)	D6	69.6 (2.7)	260	10	130	V-0	NI	-	
O-LEADING-206												
	0.15 (0.006)	0.33 (0.013)	17 (0.67)	D5	69.6 (2.7)	260	10	130	V-0	NI	-	

* - CTI marking is optional and may be marked on the printed wiring board.

Marking: Company name or file number and type designation. May be followed by a suffix to denote factory identification or burning test classification.
 Last updated on 2017-01-27

Questions? [Print this page](#) [Terms of Use](#) [Page Top](#)

[http://www.ul.com/portal/en/sectors/PCB/PDF/201VZL430354.pdf?from=ZPMV2.E490354&category=Wiring,Printed-Component&id=10](#)



Test Report No. CANEC1805164701 Date: 03 Apr 2018 Page 2 of 8

Test Results:

Test Part Description:

Specimen No. **SGS Sample ID** **Description**
 SN1 CAN18-051647.001 Green "PCB"

Remarks:

- (1) 1 mg/kg = 1 ppm = 0.0001%
- (2) MDL = Method Detection Limit
- (3) ND = Not Detected (< MDL)
- (4) "-" = Not Regulated

RoHS Directive (EU) 2015/863 amending Annex II to Directive 2011/65/EU

Test Method: With reference to IEC 62321-4:2014+A1:2017, IEC 62321-5:2013, IEC 62321-7-2:2017, IEC 62321-6:2015 and IEC 62321-8:2017, analyzed by ICP-OES, UV-Vis and GC-MS.

Test Item(s)	Limit	Unit	MDL	Det
Cadmium (Cd)	100	mg/kg	2	ND
Lead (Pb)	1,000	mg/kg	2	9
Mercury (Hg)	1,000	mg/kg	2	ND
Hexavalent Chromium (CrVI)	1,000	mg/kg	8	ND
Sum of PBBs	1,000	mg/kg	-	ND
Monobromobiphenyl	-	mg/kg	5	ND
Dibromobiphenyl	-	mg/kg	5	ND
Tribromobiphenyl	-	mg/kg	5	ND
Tetrabromobiphenyl	-	mg/kg	5	ND
Pentabromobiphenyl	-	mg/kg	5	ND
Hexabromobiphenyl	-	mg/kg	5	ND
Heptabromobiphenyl	-	mg/kg	5	ND
Octabromobiphenyl	-	mg/kg	5	ND
Nonabromobiphenyl	-	mg/kg	5	ND
Decabromobiphenyl	-	mg/kg	5	ND
Sum of PBDEs	1,000	mg/kg	-	ND
Monobromodiphenyl ether	-	mg/kg	5	ND
Dibromodiphenyl ether	-	mg/kg	5	ND
Tribromodiphenyl ether	-	mg/kg	5	ND
Tetrabromodiphenyl ether	-	mg/kg	5	ND
Pentabromodiphenyl ether	-	mg/kg	5	ND



SGS reserves all rights of printing, this document is issued by the Company subject to its General Conditions of Service printed on the reverse side of this document or available on the internet page www.sgs.com. For conditions of Service please refer to the website www.sgs.com.
 SGS and its subsidiaries are not responsible for the accuracy of the information provided in this document. The user of this document is advised to check the accuracy of the information provided in this document. The user of this document is advised to check the accuracy of the information provided in this document. The user of this document is advised to check the accuracy of the information provided in this document.
 中国 广州 德信 检测 认证 有限公司 地址: 10000 10000 10000 10000 10000 10000 10000 10000 10000 10000
 中国 广州 德信 检测 认证 有限公司 地址: 10000 10000 10000 10000 10000 10000 10000 10000 10000 10000

□□□□□

□□□□	16□□□□OEM PCB□□□□□□
□□□□	7-12days.

□□□□□□□□□□□□□□□□□□

Shipping service



□□□□□

1. □□□□□□□□□□□□□□□□
□□□□□□□□□□□□□□□□

1.The □□□□□□□□ ISO 9001 □2008 □□□□□□□□□□□□□□□□
□□□□□□□□□□□□□□□□□□□□□□

3. □□□□□□□□□□□□□□□□□□□□□□□□□□□□□□□□
X□□□□□□□□□□□□□□□□□□□□□□□□□□□□□□□□
4. □□□□□□□□□□□□□□□□□□□□□□□□□□□□□□□□
5. □□□□□□□□□□□□□□□□

2. □□□□□□□□□□□□□□□□□□□□□□□□□□□□□□□□

□□10 □□□□□□□□□□□□□□□□□□□□□□□□□□□□□□□□
□□
□□
□□

3. □□□□□□□□□□□□□□□□□□□□□□□□□□□□□□□□

□□□□FR4 □□TG □□□□□□□□□□□□□□□□□□□□□□□□□□□□□□□□
/□□

4. PCB □□□□□□□□□□□□□□□□

Gerber 274-X CAM350 CAD Protel 99Se DXP Eagle

5. PCB

→ AOI → PTH → E / T