

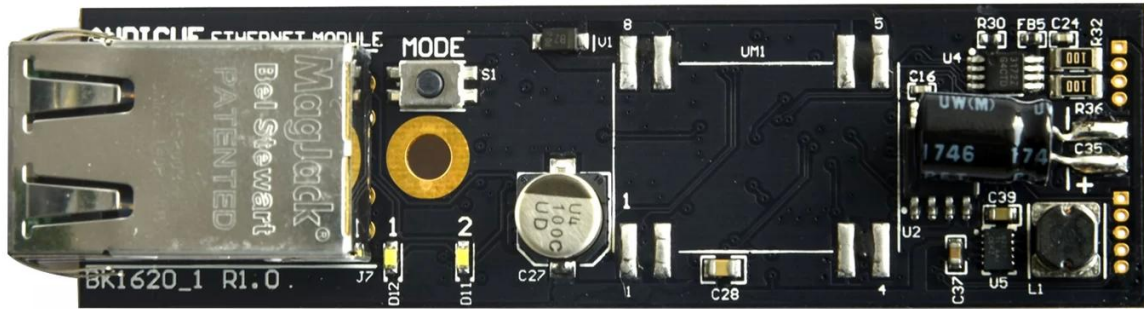
○

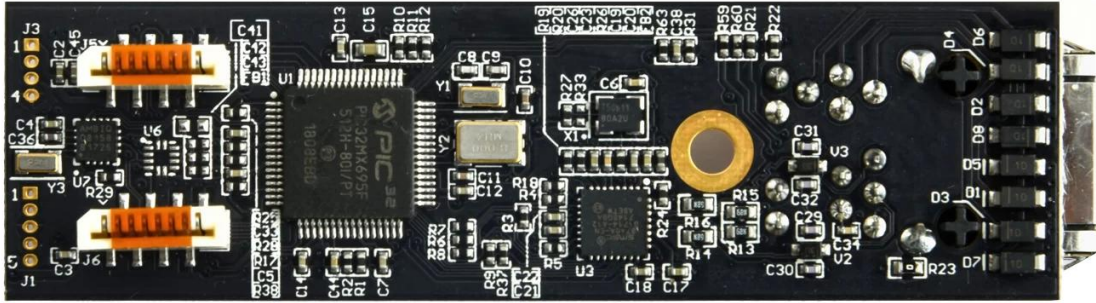
10 PCB - PCB PCB MCPCB
 - 24 S / S 48-96 4-8

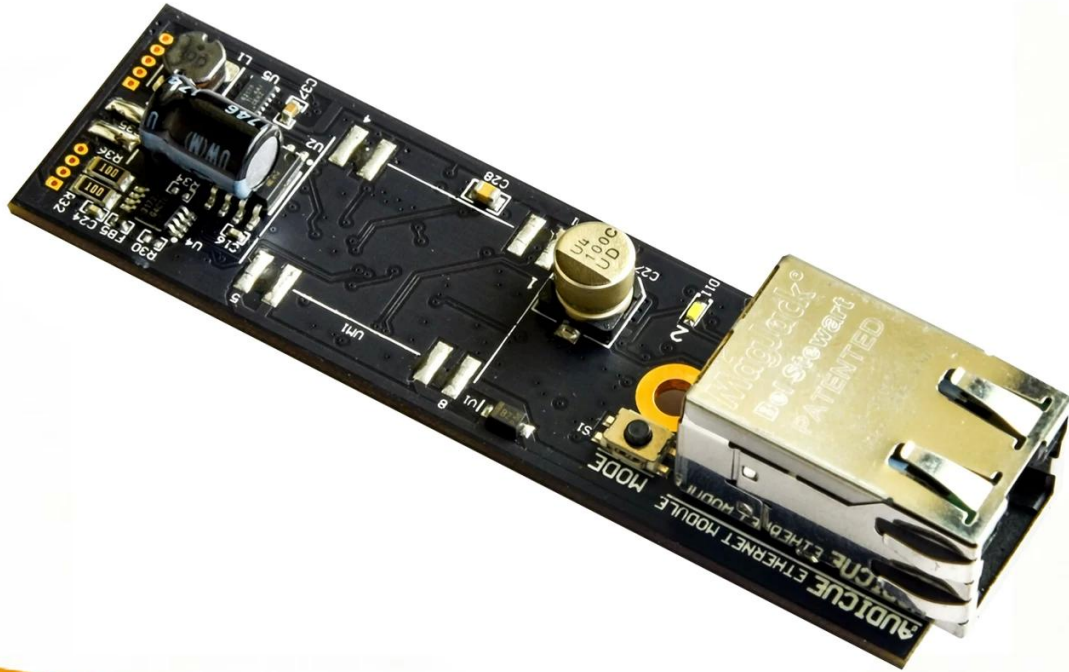
.025 AVG .020

25 /

PCB P / N	T002_EthModule
	4L
	FR-4 TG135
THK	1.6mm
THK	1/1/1 / 1oz
	0.3MM
	218
w /	5/5
Y / N Tol	Y / 100 +/- 10Ω
	0.05-0.10UM
	Xmm 80; Ymm 22.6
	Xmm 90; Ymm 121; UPS 5
	N
	CNC + V







www.o-leading.com









201726 201VZL430354 - Wiring, Printed - Component



ZPMV2.E490354
Wiring, Printed - Component

For enhanced search functionality, please visit UL's [ULi Family of Databases](#).
Click on a product designation for complete information.

Page Bottom

Wiring, Printed - Component

See General Information for Wiring, Printed - Components

O-LEADING SUPPLY CHAIN CO LIMITED

Fortune Building, Nanheng West Road
Room 1313
Huizhou, Guangdong 516211, CHINA

E490354

	Cond Width			SS/ DS/	Area Diam	Solder		Temp		Flame	RoHS	C
	Min	Max	Min			Max	Class	DSR				
Typ	mm(in)	mm(in)	mic(mil)	DSO	mm(in)	C	sec	C	Class	DSR	I	
Hull/Bayer (mass laminate) printed wiring boards.												
O-LEADING-401												
	0.2 (0.004)	0.3 (0.012)	34 (1.34)	D6	12.7 (0.5)	260	10	130	V-0	-	-	
O-LEADING-407												
	0.08 (0.003)	0.2 (0.008)	17 (0.67)	D5	9.2 (0.4)	260	10	170	V-0	NI	-	
Hull/Bayer printed wiring boards.												
O-LEADING-408												
	0.125 (0.005)	0.125 (0.005)	12 (0.47) min:1.25	D6	50.8 (2.0)	260	20	130	V-0	NI	*	
Single layer printed wiring boards.												
O-LEADING-002												
	0.76 (0.015)	1.14 (0.045)	34 (1.34)	S5	19.1 (0.8)	260	10	105	V-0	NI	-	
O-LEADING-003												
	0.38 (0.015)	1.14 (0.045)	34 (1.34)	S5	19.1 (0.8)	260	10	130	V-0	▲	-	
O-LEADING-033												
	0.15 (0.006)	0.3 (0.012)	34 (1.34)	S5	25.4 (1.0)	260	10	120	V-0	NI	-	
O-LEADING-205												
	0.1 (0.004)	0.3 (0.012)	34 (1.34)	D6	69.6 (2.7)	260	10	130	V-0	NI	-	
O-LEADING-206												
	0.15 (0.006)	0.33 (0.013)	17 (0.67)	D5	69.6 (2.7)	260	10	130	V-0	NI	-	

* - CTI marking is optional and may be marked on the printed wiring board.

Marking: Company name or file number and type designation. May be followed by a suffix to denote factory identification or burning test classification.
Last updated on 2017-01-27

Questions? [Print this page](#) [Terms of Use](#) [Page Top](#)

http://www.ul.com/ulcertification/201VZL430354/Wiring,Printed-Component



Test Report

No. CANEC1805164701

Date: 03 Apr 2018

Page 2 of 8

Test Results:

Test Part Description:

Specimen No. **SGS Sample ID** **Description**
SN1 CAN18-051647.001 Green "PCB"

Remarks:

- (1) 1 mg/kg = 1 ppm = 0.0001%
- (2) MDL = Method Detection Limit
- (3) ND = Not Detected (< MDL)
- (4) "-" = Not Regulated

RoHS Directive (EU) 2015/863 amending Annex II to Directive 2011/65/EU

Test Method: With reference to IEC 62321-4:2014+A1:2017, IEC62321-5:2013, IEC62321-7-2:2017, IEC 62321-6:2015 and IEC62321-8:2017, analyzed by ICP-OES, UV-Vis and GC-MS.

Test Item(s)	Limit	Unit	MDL	Det
Cadmium (Cd)	100	mg/kg	2	ND
Lead (Pb)	1,000	mg/kg	2	9
Mercury (Hg)	1,000	mg/kg	2	ND
Hexavalent Chromium (CrVI)	1,000	mg/kg	8	ND
Sum of PBBs	1,000	mg/kg	-	ND
Monobromobiphenyl	-	mg/kg	5	ND
Dibromobiphenyl	-	mg/kg	5	ND
Tribromobiphenyl	-	mg/kg	5	ND
Tetrabromobiphenyl	-	mg/kg	5	ND
Pentabromobiphenyl	-	mg/kg	5	ND
Hexabromobiphenyl	-	mg/kg	5	ND
Heptabromobiphenyl	-	mg/kg	5	ND
Octabromobiphenyl	-	mg/kg	5	ND
Nonabromobiphenyl	-	mg/kg	5	ND
Decabromobiphenyl	-	mg/kg	5	ND
Sum of PBDEs	1,000	mg/kg	-	ND
Monobromodiphenyl ether	-	mg/kg	5	ND
Dibromodiphenyl ether	-	mg/kg	5	ND
Tribromodiphenyl ether	-	mg/kg	5	ND
Tetrabromodiphenyl ether	-	mg/kg	5	ND
Pentabromodiphenyl ether	-	mg/kg	5	ND



SGS is pleased to announce the launch of its new online platform for the provision of test results. The platform is designed to provide a secure and efficient way for clients to access their test results. The platform is available in English, French, German, Italian, Japanese, Korean, Spanish, and Chinese. For more information, please contact your local SGS office or visit [www.sgslab.com](#).

Member of the SGS Group (SGS SA)

4. PCB

Gerber 274-X Cam350 CAD Protel 99se PADS DXP Eagle

PCB

→ → AOI → → PTH → → → → AOI → → E / T →