



8 "████████████████████
████████KMT-0080U-3CAW

8 "████████████████████ ████████	
████	████0°90°████████
████	████Rp6°
████	████±6KV████±8KV
□	DC12V / 2A□20W████
████	36mm
████	252□L□* 136□W□* 26□T□mm
████	8□□IPS HD████
□	1.7□
████████	3████████
□	□

██████

████████

8" Facial Recognition and Temperature Measurement Kiosk



IP 65 waterproof
& dustproof



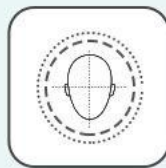
Infrared temperature
measurement



Alarming
system



Linux
Operating system



Accurate face
recognition



Large-capacity
face database

Contactless Infrared temperature detection



Temperature tolerance: $\pm 0.3^{\circ}\text{C}$

Temperature measurement range: $16^{\circ}\text{C} - 40^{\circ}\text{C}$

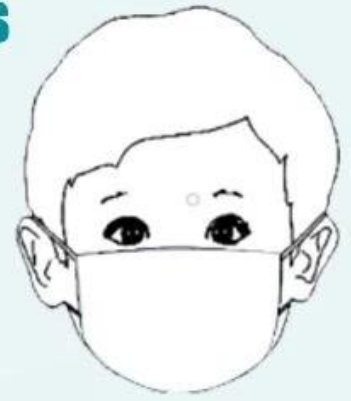
Detection distance: $\leq 30\text{cm}$

Rapid face Recognition: less than 1s

8-inch IPS full-view high-definition display, no image smearing, no delay.

Automatic gain, automatic white balance, make the true color of the image naturally restore.

Built-in black level sensor for video surveillance, low-light recognition is more accurate.



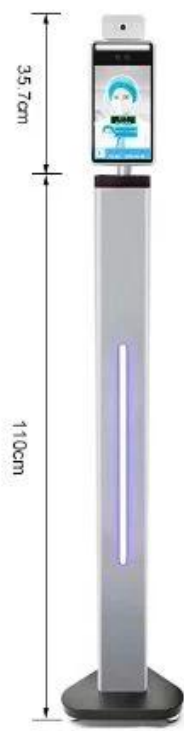
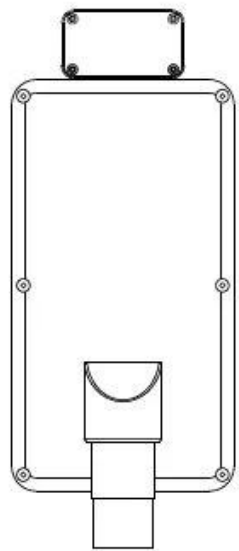
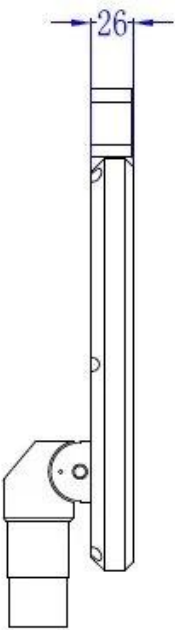
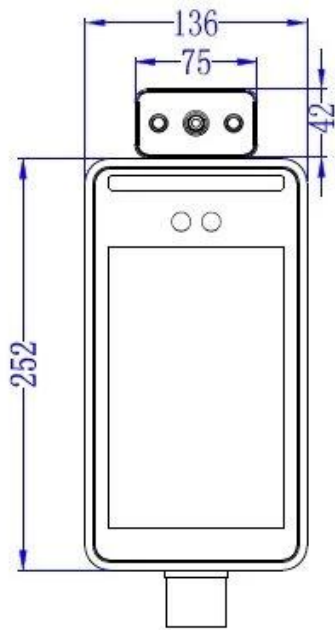
1s

**large storage capacity to meet places
with large traffic.**

24,000 face database

Support 24000+ face comparison data and 160,000 recognition records.





Alarm system for temperature measurement and entry management



Normal temperature: pass

abnormal temperature: can't pass



- Stranger
- Temperature measurement
- No entry



Flexible installation

Desktop



turnstile



wall mounted



Tripod

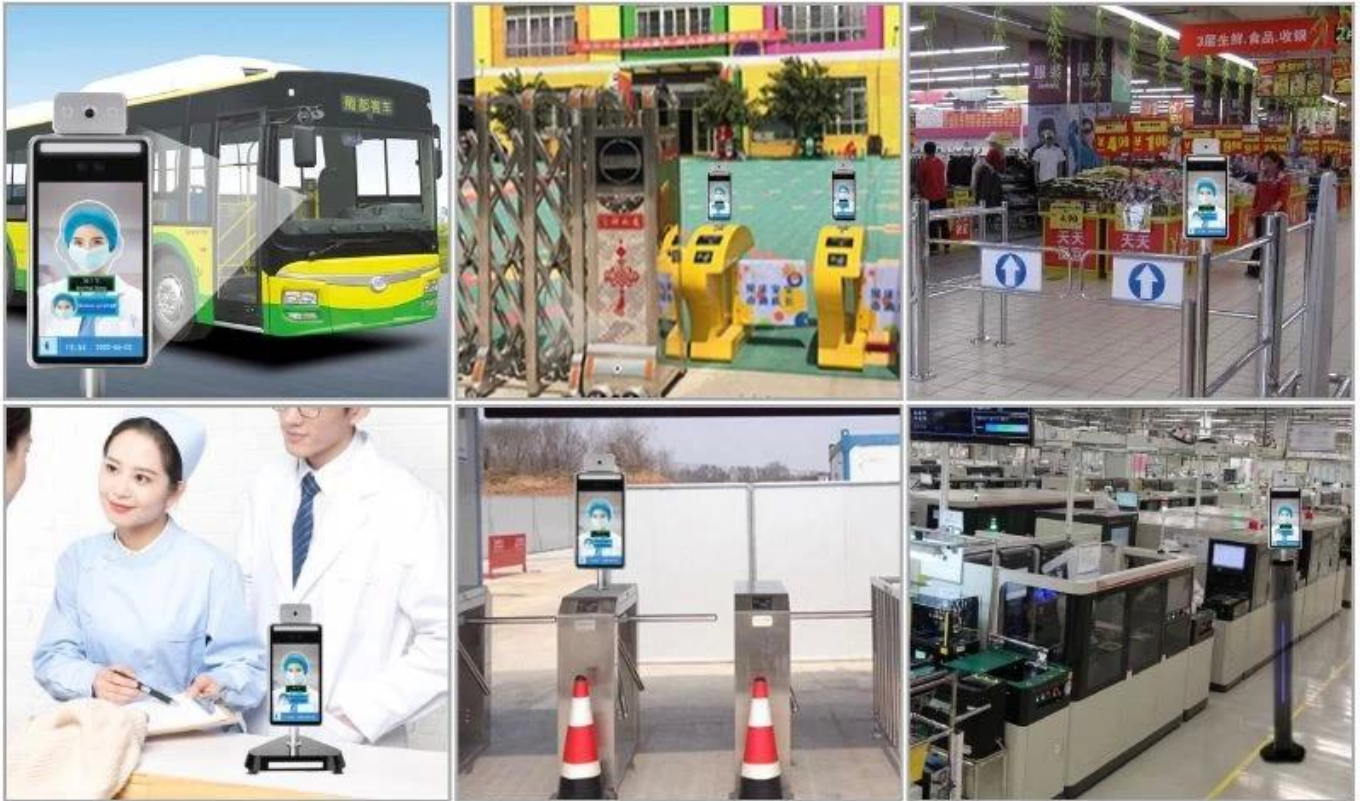


Pillar



Application

Bus, supermarket, school, government, hospital, factory



customized multiple interfaces



□□□□

















Model	KMT-0080U-3CAW
Hardware	
Processor	Dual Core Processor+ 1G memory + 16G flash
Operating system	Linux Operating system
Storage	Support TF card storage
Viewing angle	Vertical viewing angle: 30°; Horizontal viewing angle: 30°
Sensor	1/2.8" Progressive Scan CMOS(IMX307)
Lens	6mm
Communication	Support 4G \ WIFI \ bluetooth ; can be customized
Speaker	voice playback content can be customized
Temperature measurement performance	Please find the notes on last page
Measurement range	16℃ - 40℃ (Indoor without wind)
Temperature measurement	European original lens
Sensors type	Medical grade European imported sensors
Measurement accuracy	± 0.3℃
Temperature resolution	0.1℃
Temperature detection distance	≤ 30cm
Measurement response time	300ms
Performance	
Recognition	1.2~2.2 meters, angle adjustable
Recognition distance	0.3~1.5 meters, depends on lens
Recognition time	<0.5s
Storage capacity	160,000 capture records
Face capacity	24000pcs
Screen brightness	≥400 cd/m2
Interface	
Switching output	1 way switch output, other GPIO port can be customized
Network interface	1 RJ45 10M / 100M adaptive Ethernet port, Gigabit Ethernet port can be customized
Wiegand interface	1 Wiegand interface input/output
Communication interface	1 RS485 interface
USB interface	1 USB interface
Camera	
Camera	Dual cameras, visible and near infrared, support live detection
Effective pixels	2MP, 1920*1080
Min Illumination	Color 0.01Lux @F1.2(ICR);B/W 0.001Lux @F1.2 (ICR)
SNR	≥50db(AGC OFF)
WDR	120db, ISP algorithm face partial exposure
Function	
Web side configuration	support
remote upgrade	support
LAN/ WAN	support
Regular	
Working humidity	0~90% relative humidity, no condensation
Salt spray	level Rp6 or above
Antistatic	contact ±6KV, air ±8KV
Power	DC12V/2A , 20W(MAX)
Column aperture	36mm
Equipment size	252(L) * 136 (W) * 26 (T) mm
Screen size	8 inches IPS HD screen
Weight	1.7 kg

