

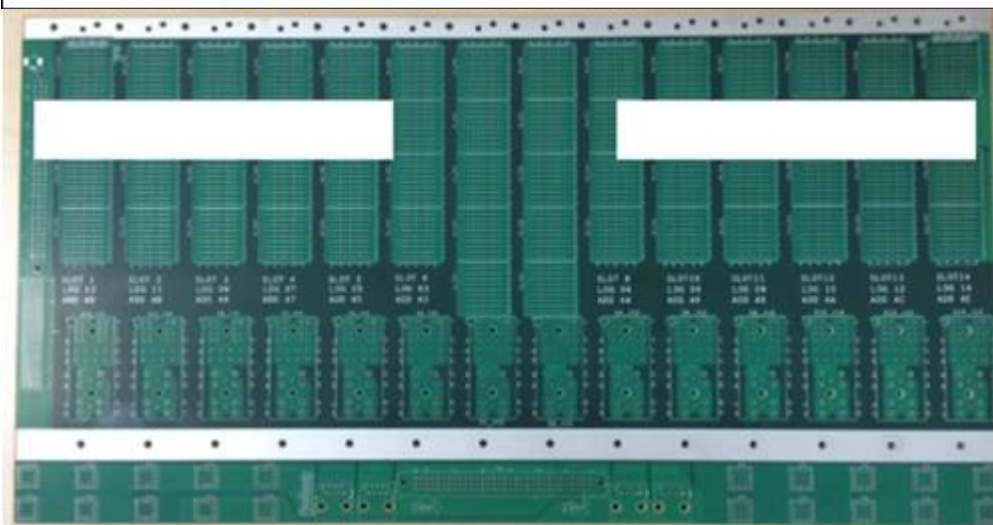
XXXXXXXXXXXX

XXXXXXXXXXXX.025 AVG 0.020 MIN ..XXXXXXXXXXXX

XXXXXXXXXXXX2500PCS /XXXXXXXXXXXX

XXX

PNL_CU_	Lyr	Image	Foil	Name	Custom Info
51.56%	COMP		0.5oz	Foil 1,2oz	
69.55%	L3		2oz	Tachyon-1000 3513 RC63.5% 20.3*19.5(10G)	182.89+-38.1um
28.42%	L3		1oz	Tachyon-1000 1000 RC72% 20.3*19.5(10G)	
70.36%	L4		2oz	Tachyon-1000 0.150mm 1.2 40.8*48.8(RTF)(1*2116)(10G)	213.36+-38.1um
23.16%	L5		1oz	Tachyon-1000 2116 RC62% 20.3*19.5(10G)	
74.43%	L6		2oz	Tachyon-1000 3513 RC63.5% 20.3*19.5(10G)	213.36+-38.1um
25.58%	L7		1oz	Tachyon-1000 0.150mm 1.2 40.8*48.8(RTF)(1*2116)(10G)	
70.36%	L8		2oz	Tachyon-1000 2116 RC62% 20.3*19.5(10G)	213.36+-38.1um
19.06%	L8		1oz	Tachyon-1000 3513 RC63.5% 20.3*19.5(10G)	
70.36%	L10		2oz	Tachyon-1000 0.150mm 1.2 40.8*48.8(RTF)(1*2116)(10G)	213.36+-38.1um
22.50%	L11		1oz	Tachyon-1000 2116 RC62% 20.3*19.5(10G)	
71.18%	L12		2oz	Tachyon-1000 3513 RC63.5% 20.3*19.5(10G)	213.36+-38.1um
25.75%	L13		1oz	Tachyon-1000 0.150mm 1.2 40.8*48.8(RTF)(1*2116)(10G)	
73.64%	L14		2oz	Tachyon-1000 2116 RC62% 20.3*19.5(10G)	213.36+-38.1um
27.59%	L15		1oz	Tachyon-1000 3513 RC63.5% 20.3*19.5(10G)	
73.66%	L16		2oz	Tachyon-1000 0.150mm 1.2 40.8*48.8(RTF)(1*2116)(10G)	213.36+-38.1um
20.46%	L17		1oz	Tachyon-1000 2116 RC62% 20.3*19.5(10G)	
73.61%	L18		2oz	Tachyon-1000 3513 RC63.5% 20.3*19.5(10G)	213.36+-38.1um
31.1%	L19		1oz	Tachyon-1000 0.150mm 1.2 40.8*48.8(RTF)(1*2116)(10G)	
70.35%	L20		2oz	Tachyon-1000 2116 RC62% 20.3*19.5(10G)	213.36+-38.1um
32.45%	L21		1oz	Tachyon-1000 3513 RC63.5% 20.3*19.5(10G)	
71.59%	L22		2oz	Tachyon-1000 0.150mm 1.2 40.8*48.8(RTF)(1*2116)(10G)	213.36+-38.1um
29.66%	L23		1oz	Tachyon-1000 2116 RC62% 20.3*19.5(10G)	
67.09%	L24		2oz	Tachyon-1000 3513 RC63.5% 20.3*19.5(10G)	213.36+-38.1um
22.36%	L25		1oz	Tachyon-1000 0.150mm 1.2 40.8*48.8(RTF)(1*2116)(10G)	
58.08%	SCULD		0.5oz	Foil 1,2oz	182.89+-38.1um



XXXXXXXXXXXXpcb in china