

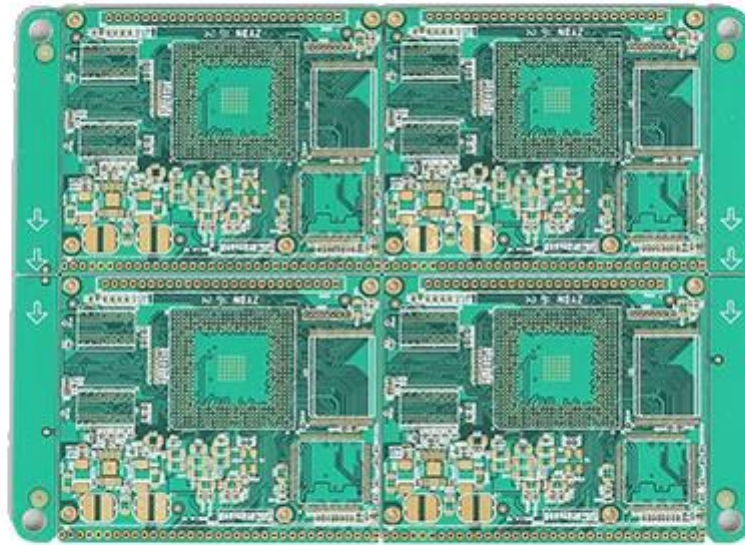




[www.o-leading.com](http://www.o-leading.com)



[www.o-leading.com](http://www.o-leading.com)



[www.o-leading.com](http://www.o-leading.com)





---

Factory PCB

---



Automatic vacuum press machine



Drilling Machine



Pattern Plating Machine



Scrubbing Machine



Developing Machine



Routing Machine



High-speed flying probe machine



E-test Machine

---

Factory SMT

---







Test Report

No. SZXEC1900530401 Date: 30 Mar 2019 Page 1 of 6

O-LEADING SUPPLY CHAIN (HK) CO., LIMITED

1313.FLOOR 13, FORTUNE BUILDING, DANSHUI TOWN, HUIYANG DISTRICT, HUIZHOU, GUANGDONG, CHINA

The following sample(s) was/were submitted and identified on behalf of the clients as : OSP

SGS Job No. : RP19-005089 - SZ
Date of Sample Received : 22 Mar 2019
Testing Period : 22 Mar 2019 - 30 Mar 2019
Test Requested : Selected test(s) as requested by client.
Test Method : Please refer to next page(s).
Test Results : Please refer to next page(s).

Conclusion : Based on the performed tests on submitted sample(s), the results of Lead, Mercury, Cadmium, Hexavalent chromium, Polybrominated biphenyls (PBBs), Polybrominated diphenyl ethers (PBDEs) and Phthalates such as Bis(2-ethylhexyl) phthalate (DEHP) , Butyl benzyl phthalate (BBP), Dibutyl phthalate (DBP) , and Diisobutyl phthalate (DIBP) comply with the limits as set by RoHS Directive (EU) 2015/863 amending Annex II to Directive 2011/65/EU.

Signed for and on behalf of
SGS-CSTC Standards Technical Services Co., Ltd. Shenzhen Branch

Tina
Tina Fan
Approved Signatory



Unless otherwise agreed in writing, this document is issued by the Company subject to its General Conditions of Service printed overleaf, available on request or accessible at http://www.sgs.com/terms-and-conditions.aspx and, for electronic format documents, subject to Terms and Conditions for Electronic Documents at http://www.sgs.com/terms-and-conditions/Electronic-Document.aspx. Attention is drawn to the limitation of liability, indemnification and jurisdiction issues defined therein. Any holder of this document is advised that unless he/she expressly agrees to the Company's liability at the time of its intended use, the limits of the Company's liability are restricted to the extent of the Company's liability under the transaction documents. This document cannot be reproduced or transmitted in any form or by any means, electronic, mechanical, photocopying, recording, or by any information storage and retrieval system, without prior written approval of the Company. Any unauthorized alteration, forgery or falsification of the content or appearance of this document is unlawful and offenders may be prosecuted to the fullest extent of the law. Unless otherwise stated the results shown in this report refer only to the samples tested.

Member of the SGS Group (SGS SA)



Test Report

No. SZXEC1900530401 Date: 30 Mar 2019 Page 2 of 6

Test Results :

Test Part Description :

Table with 3 columns: Specimen No., SGS Sample ID, Description. Row 1: SN1, SZX19-005304.001, Green"PCB"

Remarks :

- (1) 1 mg/kg = 1 ppm = 0.0001%
(2) MDL = Method Detection Limit
(3) ND = Not Detected (< MDL)
(4) "-" = Not Regulated

RoHS Directive (EU) 2015/863 amending Annex II to Directive 2011/65/EU

Test Method : With reference to IEC 62321-4:2013+A1:2017, IEC 62321-5:2013, IEC 62321-7-2:2017, IEC 62321-6:2015 and IEC 62321-8:2017, analyzed by ICP-OES, UV-Vis and GC-MS.

Table with 5 columns: Test Item(s), Limit, Unit, MDL, 0/1. Lists various heavy metals and brominated compounds with their respective limits and detection results.



Unless otherwise agreed in writing, this document is issued by the Company subject to its General Conditions of Service printed overleaf, available on request or accessible at http://www.sgs.com/terms-and-conditions.aspx and, for electronic format documents, subject to Terms and Conditions for Electronic Documents at http://www.sgs.com/terms-and-conditions/Electronic-Document.aspx. Attention is drawn to the limitation of liability, indemnification and jurisdiction issues defined therein. Any holder of this document is advised that unless he/she expressly agrees to the Company's liability at the time of its intended use, the limits of the Company's liability are restricted to the extent of the Company's liability under the transaction documents. This document cannot be reproduced or transmitted in any form or by any means, electronic, mechanical, photocopying, recording, or by any information storage and retrieval system, without prior written approval of the Company. Any unauthorized alteration, forgery or falsification of the content or appearance of this document is unlawful and offenders may be prosecuted to the fullest extent of the law. Unless otherwise stated the results shown in this report refer only to the samples tested.

Member of the SGS Group (SGS SA)



## ZPMV2.E490354 - WIRING, PRINTED - COMPONENT

## Wiring, Printed - Component

See General Information for Wiring, Printed - Component

**O-LEADING SUPPLY CHAIN (HK) CO LTD**

E490354

ROOM 1205, 12/F  
TAI SANG BANK BLDG  
130-132 DES VOEUS ROAD  
CENTRAL, HONG KONG

| Type   | Cond Width    |                |                      | SS/<br>DS/<br>DSO | Max            | Max             |       | Meets<br>UL796 | C<br>T |           |
|--|---------------|----------------|----------------------|-------------------|----------------|-----------------|-------|----------------|--------|-----------|
|  | Min           | Cond           | Area                 |                   | Solder         | Oper            | Flame |                |        |           |
|  | mm(in)        | Edge<br>mm(in) | Thk<br>mic(mil)      |                   | Diam<br>mm(in) | Limits<br>C sec |       |                |        | Temp<br>C |
| <b>Multilayer (mass laminate) printed wiring boards.</b> |               |                |                      |                   |                |                 |       |                |        |           |
| <b>O-LEADING-401</b>                                     | 0.1 (0.004)   | 0.3 (0.012)    | 34 (1.34)            | DS                | 12.7 (0.5)     | 260             | 10    | 130            | V-0    | -         |
| <b>O-LEADING-407</b>                                     | 0.08 (0.003)  | 0.2 (0.008)    | 17 (0.67)            | DS                | 9.7 (0.4)      | 260             | 10    | 130            | V-0    | All       |
| <b>Multilayer printed wiring boards.</b>                 |               |                |                      |                   |                |                 |       |                |        |           |
| <b>O-LEADING-408</b>                                     | 0.125 (0.005) | 0.125 (0.005)  | 12 (0.47)<br>Int:136 | DS                | 50.8 (2.0)     | 280             | 20    | 130            | V-0    | All *     |
| <b>Single layer printed wiring boards.</b>               |               |                |                      |                   |                |                 |       |                |        |           |
| <b>O-LEADING-002</b>                                     | 0.38 (0.015)  | 1.14 (0.045)   | 34 (1.34)            | SS                | 19.1 (0.8)     | 260             | 10    | 105            | V-0    | All -     |
| <b>O-LEADING-003</b>                                     | 0.38 (0.015)  | 1.14 (0.045)   | 34 (1.34)            | SS                | 19.1 (0.8)     | 260             | 10    | 130            | V-0    | ▲ -       |
| <b>O-LEADING-033</b>                                     | 0.15 (0.006)  | 0.3 (0.012)    | 34 (1.34)            | SS                | 25.4 (1.0)     | 260             | 10    | 120            | V-0    | All -     |
| <b>O-LEADING-205</b>                                     | 0.1 (0.004)   | 0.3 (0.012)    | 34 (1.34)            | DS                | 69.6 (2.7)     | 260             | 10    | 130            | V-0    | All -     |
| <b>O-LEADING-206</b>                                     | 0.15 (0.006)  | 0.33 (0.013)   | 17 (0.67)            | DS                | 69.6 (2.7)     | 260             | 10    | 130            | V-0    | All -     |
| <b>O-LEADING-D01</b>                                     | 0.14 (0.006)  | 0.15 (0.006)   | 33 (1.30)            | DS                | 25.4 (1.0)     | 260             | 10    | 130            | V-0    | All *     |
| <b>O-LEADING-S01</b>                                     | 0.25 (0.010)  | 0.25 (0.010)   | 17 (0.67)            | SS                | 25.4 (1.0)     | 260             | 4     | 130            | V-0    | All *     |

## WIRING, PRINTED - COMPONENT | UL Product iQ

|                      |              |              |           |    |            |     |   |     |     |       |
|----------------------|--------------|--------------|-----------|----|------------|-----|---|-----|-----|-------|
| <b>O-LEADING-S02</b> | 0.2 (0.008)  | 0.2 (0.008)  | 17 (0.67) | SS | 25.4 (1.0) | 260 | 4 | 130 | HB  | ▲ *   |
| <b>O-LEADING-S03</b> | 0.25 (0.010) | 0.25 (0.010) | 34 (1.34) | SS | 25.4 (1.0) | 260 | 4 | 130 | V-0 | All * |

\* - CTI marking is optional and may be marked on the printed wiring board.

Marking: Company name or file number and type designation. May be followed by a suffix to denote factory identification or burning test classification.

并不是所有出现在本数据库中的公司名称和产品都满足了UL跟踪检验服务的要求。只有带有UL标志的产品，才应该被视为经过UL认证，并满足UL跟踪检验服务的要求。注意查看产品上的标志。

UL允许在线认证目录中所含材料的复制遵循以下条件：1.指南信息、装配、构造、设计、系统和/或认证（文件）必须在不篡改任何数据（或图纸）的情况下完整且无误导性地呈现。2.经UL允许从在线认证目录转载“声明必须出现在所提取材料的邻近位置。此外，转载材料必须包含以下格式的版权声明：“© 2019 UL LLC”





# Shipping service



| Quick Turn Lead Time |          |                     |
|----------------------|----------|---------------------|
| Layer Count:         | Lead Tim | Special Requirement |
| 1L/2L                | 2-3days  | 24 Hours,48 Hours   |
| 4L                   | 3-4days  | 48 Hours            |
| 6L                   | 4-5days  | 72 Hours            |
| 8L                   | 5-6days  | NA                  |
| 10L                  | 6-7days  | NA                  |
| 12L                  | 7-8days  | NA                  |
| 14L                  | 8-9days  | NA                  |

| Standard Lead Time |                  |                        |
|--------------------|------------------|------------------------|
| Layer Count:       | Sample Lead Time | Volume order lead time |
| 2L                 | 4 days           | 10 days                |
| 4L                 | 5 days           | 11 days                |
| 6L                 | 6 days           | 12 days                |
| 8L                 | 8 days           | 14 days                |
| 10L                | 10 days          | 16 days                |
| 12L                | 12 days          | 18 days                |
| 14L                | 14 days          | 20 days                |
| 16-32L             | 18 days          | 24 days                |



**PCB**

1Layer-32Layer  
 1 / 3oz-12oz  
 3.0mil / 3.0mil  
 4.0mil / 4.0mil  
 10 $\mu$ m  
 0.2mm-5.0mm  
 635 \* 1500mm  
 4mil  
 Plated Hole Tolerance  $\pm$  3mil  
 Blind / Buried Vias All  
 Via Fill  
 FR-4 FR-4high Tg  
 HASL OSP ENIG HAL-LF

**SMT**

PCB FR-4 CEM-1 CEM-3  
PCB 510x460mm  
PCB 50x50mm  
PCB 0.5mm-4.5mm  
0.5-4mm  
0201  
0603  
15mm  
0.3mm  
BGA 0.4mm  
+/- 0.03mm