

## Welcome to O-leading

We are professional PCB manufacturer with more than ten years experiences . Products range-single, double side ,multi-layer PCB ,flexible PCB and MCPCB.We can provide fast prototype service - S/S in 24hrs , 4-8layers in 48-96 working hrs production time.

COPPER PLATE HOLES MINIMUM .025 AVG, .020 MIN.. HOLES MAY NOT BE PLUGGED

Pack with colorless transparent bubble film ,25 PCS/ bag, put desiccant in flank, put humidity indicator card on top side

PLEASE CLICK THESE FOR MORE INFORMATION

[Thick copper pcb Manufacturer](#)

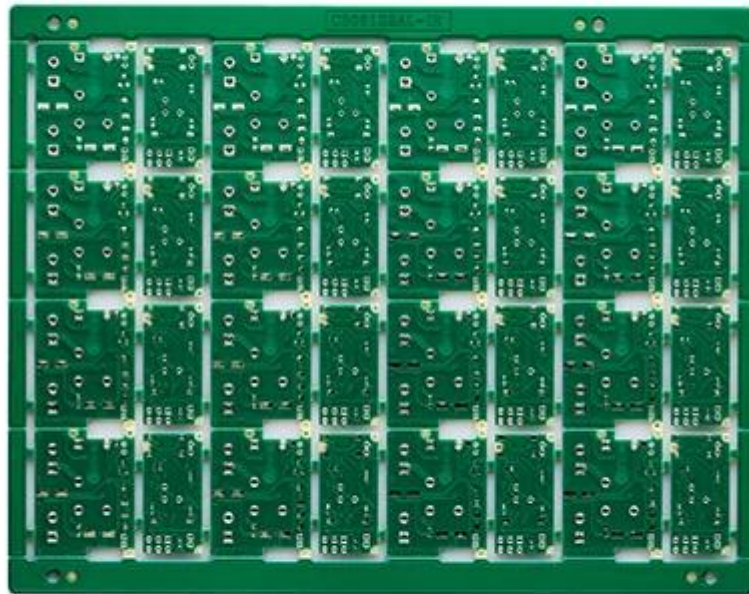
[Thick copper pcb wholesales china](#)

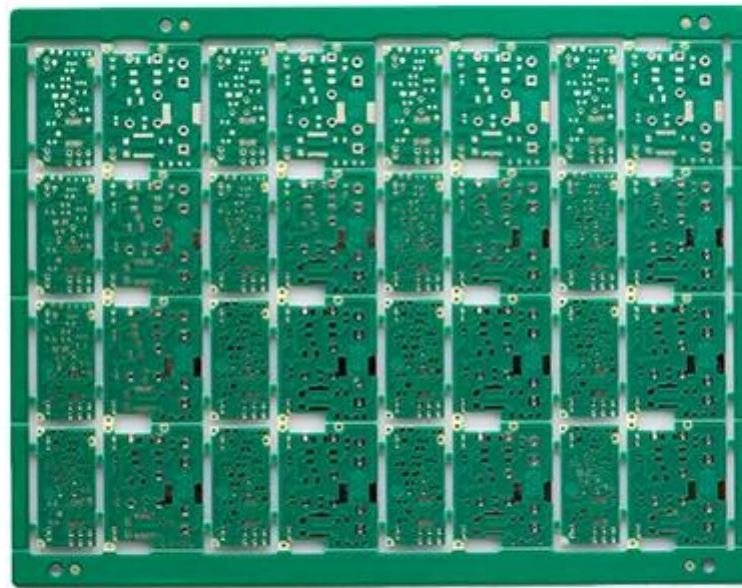
[High quality pcb manufacturer](#)

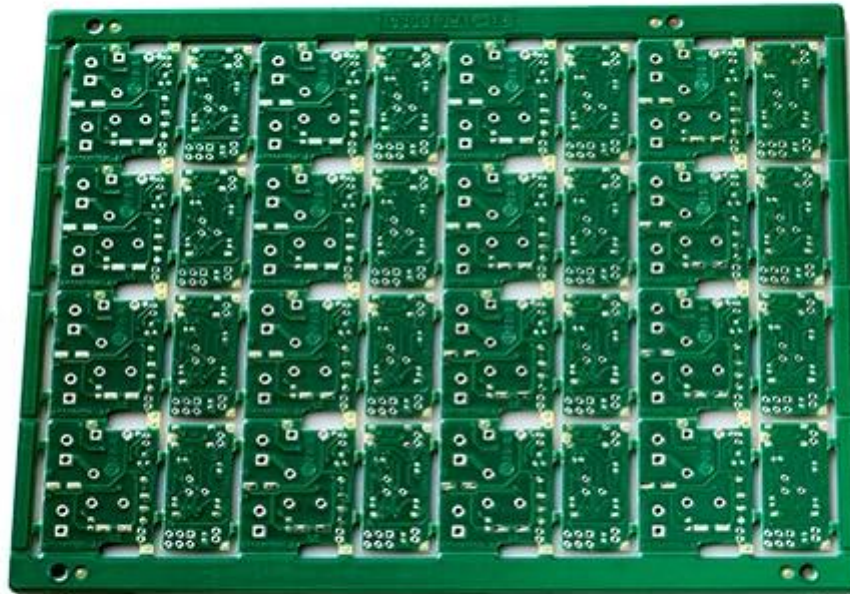
## Product Description

PCB P/N	heavy copper pcb with 3/3oz
Layer Count	2L
Material	FR-4 TG130
Board thk	1.00mm
copper thk	3/3oz
Smallest hole size	0.50mm
No. of holes (pcs)	106
line w/s	10/10mil
Impedance control. Y / N (Tol %)	N
Surface Finishing	LF-HASL
Solder Mask Silkscreen	Green/ N/A
Single board size	Dim X (mm): 44.5; Dim Y (mm): 34
Panelisation	Dim X (mm):198;Dim Y (mm):156;No Of UPS:16
Special:peelable mask	N
Routing/Punching	CNC

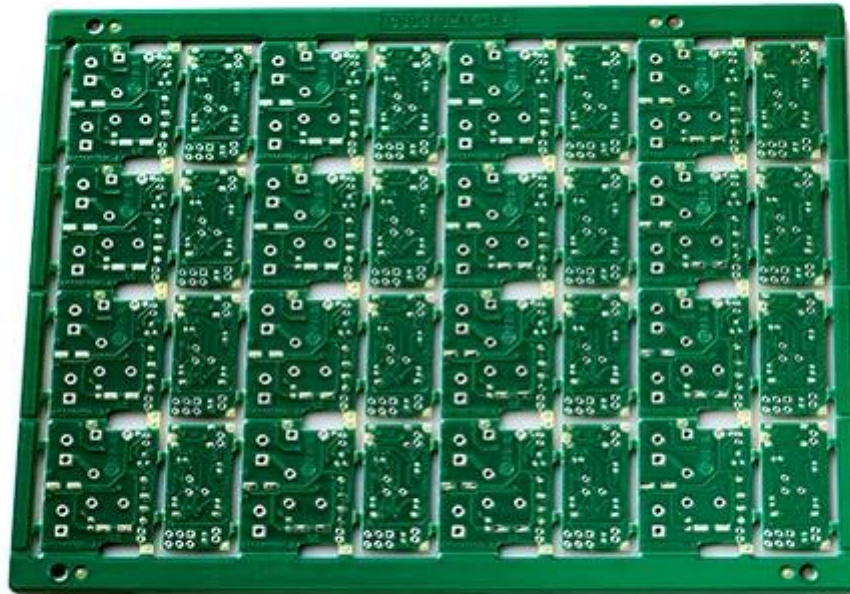
•





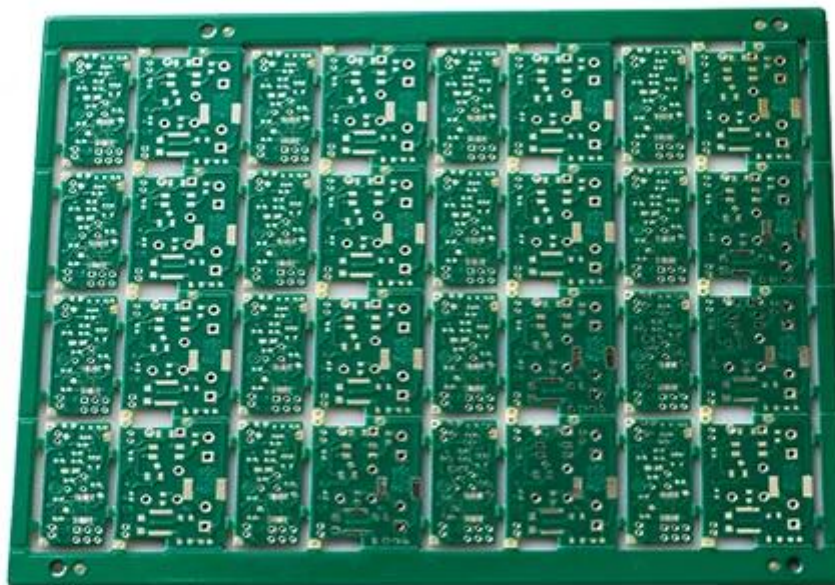


**O-LEADING**  
To Be Reliable, To Be Valuable



[www.o-leading.com](http://www.o-leading.com)

**O-LEADING**  
To Be Reliable, To Be Valuable



[www.o-leading.com](http://www.o-leading.com)

## Our Team





Certifications



### QUALITY MANAGEMENT SYSTEM CERTIFICATE

Certificate No: 16118Q10347R05

**We hereby certify that**  
**O-LEADING SUPPLY CHAIN(HK) CO.,LIMITED**  
 Credit No: 61691591-000-07-17-2  
 Registration Add: ROOM 603D 6/F HANG PONT COMMERCIAL BUILDING,31 TONKIN ST,CHEUNG SHA WAN,KL, HK  
 Business Add: 1313 Floor 13 Fortune Building, Danstui Town Huiyang District, Huizhou, Guangdong, China

Has implemented and maintains a **Quality Management System**  
 Which fulfills the requirements of the following standards  
 GB/T19001-2016 idt ISO9001:2015

**Scope of certification**  
 Sales of printed circuit boards

Initial Issuance period: February 27, 2018  
 This certificate is valid during: February 27, 2018 -- February 26, 2021  
 This certificate is invalid without CICC qualified label in the following period

First supervision and audit	Qualified mark	Second supervision and audit	Qualified mark
-----------------------------	----------------	------------------------------	----------------

The certification registration scope does't include those products/services scopes which fail to be covered by the relevant effective administrative permission and qualification permission required by the state. The effectiveness of this certificate shall be evaluated by annual surveillance audit of CICC. The certificate shall be valid when used together with the surveillance audit conclusion. The related information of this certification can be searched at the public website of company www.cicc.com.cn.

201726 201VZL430354 - Wiring, Printed - Component

**UL ONLINE CERTIFICATIONS DIRECTORY**

**ZPMV2.E490354**  
**Wiring, Printed - Component**

For enhanced search functionality, please visit [UL's Global Databases](#).  
 Click on a product designation for complete information.  
[Page Bottom](#)

**Wiring, Printed - Component**

See General Information for Wiring, Printed - Components

**O-LEADING SUPPLY CHAIN CO LIMITED** 4190354  
 Fortune Building, Nanheng West Road  
 Room 1313  
 Huizhou, Guangdong 516211, CHINA

	Cond Width			SS/ DS/ Diam	Area	Solder		Dper		Flame	RoHS	C
	Min	Max	Min			Max	Min	Max				
Typ	max(in)	mm(in)	mic(mil)	DS0	mm(in)	C	sec	C	Class	DSR	I	
<b>Multi-layer (mass laminate) printed wiring boards.</b>												
<b>O-LEADING-401</b>												
	0.2 (0.004)	0.3 (0.012)	34 (1.34)	D6	12.7 (0.5)	260	10	130	V-0	-	-	
<b>O-LEADING-407</b>												
	0.08 (0.003)	0.2 (0.008)	17 (0.67)	D5	9.2 (0.4)	260	10	130	V-0	NI	-	
<b>Multi-layer printed wiring boards.</b>												
<b>O-LEADING-408</b>												
	0.125 (0.005)	0.125 (0.005)	12 (0.47) 31(1.25)	D6	50.8 (2.0)	260	20	130	V-0	NI	*	
<b>Single layer printed wiring boards.</b>												
<b>O-LEADING-002</b>												
	0.76 (0.015)	1.14 (0.045)	34 (1.34)	S5	19.1 (0.8)	260	10	105	V-0	NI	-	
<b>O-LEADING-003</b>												
	0.38 (0.015)	1.14 (0.045)	34 (1.34)	S5	19.1 (0.8)	260	10	130	V-0	▲	-	
<b>O-LEADING-033</b>												
	0.15 (0.006)	0.3 (0.012)	34 (1.34)	S5	25.4 (1.0)	260	10	120	V-0	NI	-	
<b>O-LEADING-205</b>												
	0.1 (0.004)	0.3 (0.012)	34 (1.34)	D6	69.6 (2.7)	260	10	130	V-0	NI	-	
<b>O-LEADING-206</b>												
	0.15 (0.006)	0.33 (0.013)	17 (0.67)	D5	69.6 (2.7)	260	10	130	V-0	NI	-	

\* - CTI marking is optional and may be marked on the printed wiring board.

Marking: Company name or file number and type designation. May be followed by a suffix to denote factory identification or burning test classification.  
 Last updated on 2017-01-27

Questions? [Print this page](#) [Terms of Use](#) [Page Top](#)

**SGS**

**Test Report** No. CAVEC1805164701 Date: 03 Apr 2018 Page 2 of 8

Test Results:

Test Part Description:

Specimen No.	SGS Sample ID	Description
SN1	CAN18-051647.001	Green "PCB"

Remarks:

- (1) 1 mg/kg = 1 ppm = 0.0001%
- (2) MDL = Method Detection Limit
- (3) ND = Not Detected (< MDL)
- (4) "-" = Not Regulated

**RoHS Directive (EU) 2015/863 amending Annex II to Directive 2011/65/EU**

Test Method: With reference to IEC 62321-4:2014+A1:2017, IEC 62321-5:2013, IEC 62321-7-2:2017, IEC 62321-6:2015 and IEC 62321-8:2017, analyzed by ICP-OES, UV-Vis and GC-MS.

Test Item(s)	Limit	Unit	MDL	Det
Cadmium (Cd)	100	mg/kg	2	ND
Lead (Pb)	1,000	mg/kg	2	9
Mercury (Hg)	1,000	mg/kg	2	ND
Hexavalent Chromium (CrVI)	1,000	mg/kg	8	ND
Sum of PBBs	1,000	mg/kg	-	ND
Monobromobiphenyl	-	mg/kg	5	ND
Dibromobiphenyl	-	mg/kg	5	ND
Tribromobiphenyl	-	mg/kg	5	ND
Tetrabromobiphenyl	-	mg/kg	5	ND
Pentabromobiphenyl	-	mg/kg	5	ND
Hexabromobiphenyl	-	mg/kg	5	ND
Heptabromobiphenyl	-	mg/kg	5	ND
Octabromobiphenyl	-	mg/kg	5	ND
Nonabromobiphenyl	-	mg/kg	5	ND
Decabromobiphenyl	-	mg/kg	5	ND
Sum of PBDEs	1,000	mg/kg	-	ND
Monobromodiphenyl ether	-	mg/kg	5	ND
Dibromodiphenyl ether	-	mg/kg	5	ND
Tribromodiphenyl ether	-	mg/kg	5	ND
Tetrabromodiphenyl ether	-	mg/kg	5	ND
Pentabromodiphenyl ether	-	mg/kg	5	ND

We warrant that the information provided in this document is correct to the best of our knowledge and belief. The information is provided for your reference only. It is not intended to be used as a basis for any legal action. The information is provided on an "as is" basis. We do not warrant the accuracy, completeness, or reliability of the information. We do not warrant that the information is up-to-date or that it will be updated. We do not warrant that the information is free from errors or omissions. We do not warrant that the information is suitable for any particular purpose. We do not warrant that the information is not subject to change without notice. We do not warrant that the information is not subject to deletion or modification. We do not warrant that the information is not subject to any other limitations. We do not warrant that the information is not subject to any other conditions. We do not warrant that the information is not subject to any other restrictions. We do not warrant that the information is not subject to any other terms. We do not warrant that the information is not subject to any other conditions. We do not warrant that the information is not subject to any other restrictions. We do not warrant that the information is not subject to any other terms.

中国合格评定国家认可委员会 (CNAS) 注册号: C110001 地址: 广州市天河区黄埔大道西668号 邮编: 510666 电话: 020-85491000 网站: www.cnas.com.cn



## Packaging & Delivery

Packaging Details	16 years professional OEM pcb board manufacturer
Delivery Detail	7-12days



## FAQ

### 1. How do O-Leading ensure quality?

Our high quality standard is achieved with the following.

- 1.The process is strictly controlled under ISO 9001:2008 standards.
- 2.Extensive use of software in managing the production process
- 3.State-of-art testing equipments and tools. E.g. Flying Probe, X-ray Inspection, AOI (Automated Optical Inspector) and ICT (in-circuit testing).
- 4.Dedicated quality assurance team with failure case analysis process
- 5.Continuous staff training and education

### 2. How do O-Leading keep your price competitive?

Over the last decade, prices of many raw materials (e.g. copper, chemicals) had doubled, tripled or quadrupled; Chinese currency RMB had appreciated 31% over US dollar; And our labor cost also increased significantly. However, O-Leading have kept our pricing steady. This owns entirely to our innovations in reducing cost, avoiding wastes and improving efficiency. Our prices are very competitive in the industry at the same quality level.

We believe in a win-win partnership with our customers. Our partnership will be mutually beneficial

if we can provide you an edge on cost and quality.

3. What kinds of boards can O-Leading process?

Common FR4, high-TG and halogen-free boards, Rogers, Arlon, Telfon, aluminum/copper-based boards, PI, etc.

4. What data are needed for PCB production?

It is best to provide data in Gerber 274-X format. In addition, Cam350, CAD, Protel 99se, PADS, DXP and Eagle can also be processed.

5. What's the typical process flow for multi-layer PCB?

Material cutting → Inner dry film → inner etching → Inner AOI → Multi-bond → Layer stack up Pressing → Drilling → PTH → Panel Plating → Outer Dry Film → Pattern Plating → Outer etching → Outer AOI → Solder Mask → Component Mark → Surface finish → Routing → E/T → Visual Inspection.