

Welcome to O-leading

We are professional PCB manufacturer with more than ten years experiences . Products range-single, double side ,multi-layer PCB ,flexible PCB and MCPCB.We can provide fast prototype service - S/S in 24hrs , 4-8layers in 48-96 working hrs production time.

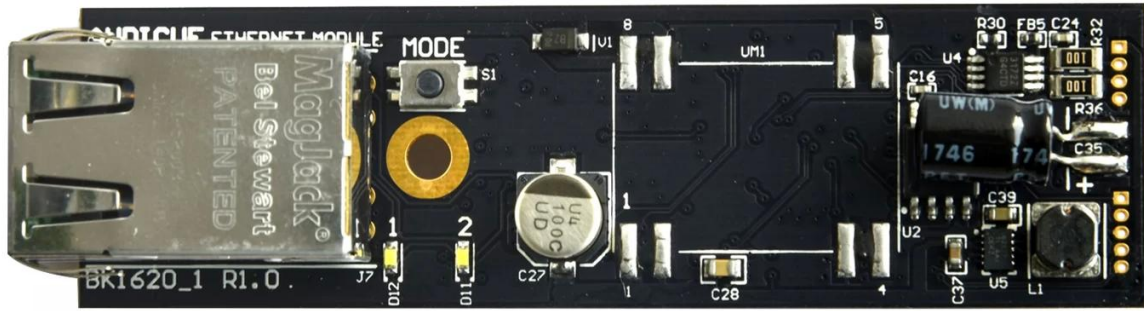
COPPER PLATE HOLES MINIMUM .025 AVG, .020 MIN.. HOLES MAY NOT BE PLUGGED

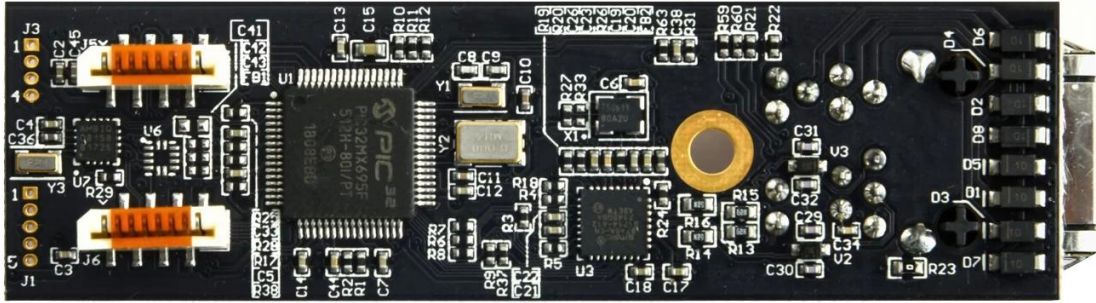
Pack with colorless transparent bubble film ,25 PCS/ bag, put desiccant in flank, put humidity indicator card on top side

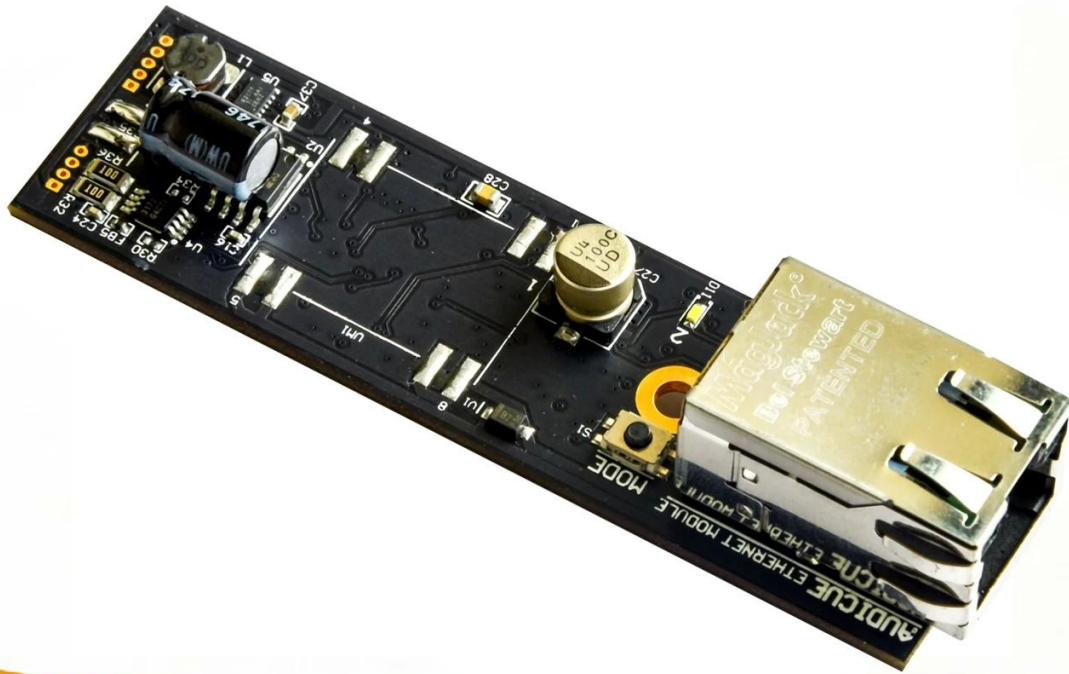
PLEASE CLICK THESE FOR MORE INFORMATION [Halogen Free PCB manufacturer china](#)

Product Description

| | |
|--|--|
| PCB P/N | T002_EthModule |
| Layer Count | 4L |
| Material | FR-4 TG135 |
| Board thk | 1.6mm |
| copper thk | 1/1/1/1oz |
| Smallest hole size | 0.3MM |
| No. of holes (pcs) | 218 |
| line w/s | 5/5mil |
| Impedance control. Y / N (Tol %) | Y / 100+/-10%Ω |
| Surface Finishing:Plated hard Gold, Au | 0.05-0.10UM |
| Solder Mask Silkscreen | Blue / White |
| Single board size | Dim X (mm):80;Dim Y (mm):22.6 |
| Panelisation | Dim X (mm):90;Dim Y (mm):121;No Of UPS:5 |
| Special:peelable mask | N |
| Routing/Punching | CNC+V-CUT |







www.o-leading.com

[RoHs Compliant manufacturer china](#)

Our Team





Certifications



201726 201VZL430354 - Wiring, Printed - Component



ZPMV2.E490354
Wiring, Printed - Component

For enhanced search functionality, please visit UL's [online family of databases](#).
Click on a product designation for complete information.

Page Bottom

Wiring, Printed - Component

See General Information for Wiring, Printed - Components

O-LEADING SUPPLY CHAIN CO LIMITED

Fortune Building, Nanheng West Road
Room 1313
Huizhou, Guangdong 516211, CHINA

E490354

| | Cond Width | | | SS/ DS/ | Area Diam | Solder | | Temp | Flame | RoHS | C |
|---|---------------|---------------|-----------------------|------------|--------------|--------|-----|------|-------|------|---|
| | Min | Max | Max | | | Di | Di | | | | |
| Typ | mm(in) | mm(in) | mm(mil) | DSO | mm(in) | C | sec | C | Class | DSR | I |
| Multi-layer (mass laminate) printed wiring boards. | | | | | | | | | | | |
| O-LEADING-401 | | | | | | | | | | | |
| | 0.2 (0.004) | 0.3 (0.012) | 34 (1.34) | D6 | 12.7 (0.5) | 260 | 10 | 230 | V-0 | - | - |
| O-LEADING-407 | | | | | | | | | | | |
| | 0.08 (0.003) | 0.2 (0.008) | 17 (0.67) | D5 | 9.2 (0.4) | 260 | 10 | 170 | V-0 | NI | - |
| Multi-layer printed wiring boards. | | | | | | | | | | | |
| O-LEADING-408 | | | | | | | | | | | |
| | 0.125 (0.005) | 0.125 (0.005) | 12 (0.47) min:1.25 | D6 | 50.8 (2.0) | 260 | 20 | 230 | V-0 | NI | * |
| Single layer printed wiring boards. | | | | | | | | | | | |
| O-LEADING-002 | | | | | | | | | | | |
| | 0.76 (0.03) | 1.14 (0.045) | 34 (1.34) | S5 | 19.1 (0.8) | 260 | 10 | 105 | V-0 | NI | - |
| O-LEADING-003 | | | | | | | | | | | |
| | 0.38 (0.015) | 1.14 (0.045) | 34 (1.34) | S5 | 19.1 (0.8) | 260 | 10 | 230 | V-0 | ▲ | - |
| O-LEADING-033 | | | | | | | | | | | |
| | 0.15 (0.006) | 0.3 (0.012) | 34 (1.34) | S5 | 25.4 (1.0) | 260 | 10 | 120 | V-0 | NI | - |
| O-LEADING-205 | | | | | | | | | | | |
| | 0.1 (0.004) | 0.3 (0.012) | 34 (1.34) | D6 | 69.6 (2.7) | 260 | 10 | 230 | V-0 | NI | - |
| O-LEADING-206 | | | | | | | | | | | |
| | 0.15 (0.006) | 0.33 (0.013) | 17 (0.67) | D5 | 69.6 (2.7) | 260 | 10 | 130 | V-0 | NI | - |

* - CTI marking is optional and may be marked on the printed wiring board.

Marking: Company name or file number and type designation. May be followed by a suffix to denote factory identification or burning test classification.
Last updated on 2017-01-27

Questions? [Print this page](#) [Terms of Use](#) [Page Top](#)

http://www.ul.com/onlinecertifications/UL60718RMS/ewg/zpmv2.e490354/Wiring,Printed-Component/10



Test Report

No. CANEC1805164701

Date: 03 Apr 2018

Page 2 of 8

Test Results:

Test Part Description:

Specimen No. **SGS Sample ID** **Description**
SNI CAN18-051647.001 Green PCB*

Remarks:

- (1) 1 mg/kg = 1 ppm = 0.0001%
- (2) MDL = Method Detection Limit
- (3) ND = Not Detected (< MDL)
- (4) "-" = Not Regulated

RoHS Directive (EU) 2015/863 amending Annex II to Directive 2011/65/EU

Test Method: With reference to IEC 62321-4:2014+A1:2017, IEC 62321-5:2013, IEC 62321-7-2:2017, IEC 62321-6:2015 and IEC 62321-8:2017, analyzed by ICP-OES, UV-Vis and GC-MS.

| Test Item(s) | Limit | Unit | MDL | Det |
|----------------------------|-------|-------|-----|-----|
| Cadmium (Cd) | 100 | mg/kg | 2 | ND |
| Lead (Pb) | 1,000 | mg/kg | 2 | 9 |
| Mercury (Hg) | 1,000 | mg/kg | 2 | ND |
| Hexavalent Chromium (CrVI) | 1,000 | mg/kg | 8 | ND |
| Sum of PBBs | 1,000 | mg/kg | - | ND |
| Monobromobiphenyl | - | mg/kg | 5 | ND |
| Dibromobiphenyl | - | mg/kg | 5 | ND |
| Tribromobiphenyl | - | mg/kg | 5 | ND |
| Tetrabromobiphenyl | - | mg/kg | 5 | ND |
| Pentabromobiphenyl | - | mg/kg | 5 | ND |
| Hexabromobiphenyl | - | mg/kg | 5 | ND |
| Heptabromobiphenyl | - | mg/kg | 5 | ND |
| Octabromobiphenyl | - | mg/kg | 5 | ND |
| Nonabromobiphenyl | - | mg/kg | 5 | ND |
| Decabromobiphenyl | - | mg/kg | 5 | ND |
| Sum of PBDEs | 1,000 | mg/kg | - | ND |
| Monobromodiphenyl ether | - | mg/kg | 5 | ND |
| Dibromodiphenyl ether | - | mg/kg | 5 | ND |
| Tribromodiphenyl ether | - | mg/kg | 5 | ND |
| Tetrabromodiphenyl ether | - | mg/kg | 5 | ND |
| Pentabromodiphenyl ether | - | mg/kg | 5 | ND |



SGS is pleased to announce the launch of its new online certification platform, which provides a secure and efficient way for clients to manage their certification needs. The platform offers a range of services, including the issuance of certificates, the management of certificates, and the provision of technical support. For more information, please visit [www.sgs.com](#).

Member of the SGS Group (SGS SA)

Packaging & Delivery

| | |
|-------------------|--|
| Packaging Details | 16 years professional OEM pcb board manufacturer |
| Delivery Detail | 7-12days |



FAQ

1. How do O-Leading ensure quality? [Engine Power Module manufacturer china](#)

Our high quality standard is achieved with the following.

- 1.The process is strictly controlled under ISO 9001:2008 standards.
- 2.Extensive use of software in managing the production process
- 3.State-of-art testing equipments and tools. E.g. Flying Probe, X-ray Inspection, AOI (Automated Optical Inspector) and ICT (in-circuit testing).
- 4.Dedicated quality assurance team with failure case analysis process
- 5.Continuous staff training and education

2. How do O-Leading keep your price competitive?

Over the last decade, prices of many raw materials (e.g. copper, chemicals) had doubled, tripled or quadrupled; Chinese currency RMB had appreciated 31% over US dollar; And our labor cost also increased significantly. However, O-Leading have kept our pricing steady. This owns entirely to our innovations in reducing cost, avoiding wastes and improving efficiency. Our prices are very competitive in the industry at the same quality level.

We believe in a win-win partnership with our customers. Our partnership will be mutually beneficial if we can provide you an edge on cost and quality.

3. What kinds of boards can O-Leading process?

Common FR4, high-TG and halogen-free boards, Rogers, Arlon, Telfon, aluminum/copper-based boards, PI, etc.

4. What data are needed for PCB production?

It is best to provide data in Gerber 274-X format. In addition, Cam350, CAD, Protel 99se, PADS, DXP and Eagle can also be processed.

5. What's the typical process flow for multi-layer PCB?

Material cutting → Inner dry film → inner etching → Inner AOI → Multi-bond → Layer stack up Pressing → Drilling → PTH → Panel Plating → Outer Dry Film → Pattern Plating → Outer etching → Outer AOI → Solder Mask → Component Mark → Surface finish → Routing → E/T → Visual Inspection.