

Welcome to O-leading

We are professional PCB manufacturer with more than ten years experiences . Products range-single, double side ,multi-layer PCB ,flexible PCB and MCPCB.We can provide fast prototype service - S/S in 24hrs , 4-8layers in 48-96 working hrs production time. ([Multilayer PCB Printed Company](#))

COPPER PLATE HOLES MINIMUM .025 AVG, .020 MIN.. HOLES MAY NOT BE PLUGGED

Pack with colorless transparent bubble film ,25 PCS/ bag, put desiccant in flank, put humidity indicator card on top side

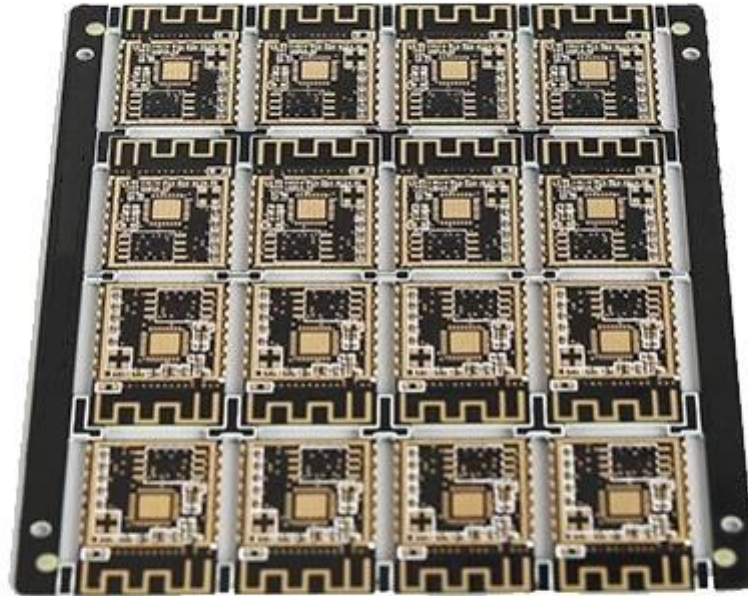
PLEASE CLICK THESE FOR MORE INFORMATION: [pcb manufacturer in china](#)

Product Description

PCB P/N	Black solder mask pcb with half plated hole
Layer Count	4L
Material	FR-4 TG170
Board thk	1.6mm
copper thk	1/1/1/1oz
Smallest hole size	0.3MM
No. of holes (pcs)	98
line w/s	5/5mil
Impedance control. Y / N (Tol %)	N
Surface Finishing	ENIG Au:0.05-0.10UM
Solder Mask Silkscreen	Black / White
Single board size	Dim X (mm):21;Dim Y (mm):12
Panelisation	Dim X (mm):90;Dim Y (mm):68;No Of UPS:16
Special:peelable mask	N
Routing/Punching	CNC

•





www.o-leading.com

Our Team

[High quality pcb wholesalers](#)





Certifications



QUALITY MANAGEMENT SYSTEM CERTIFICATE

Certificate No.: 16118Q10347R05

We hereby certify that
O-LEADING SUPPLY CHAIN(HK) CO.,LIMITED
 Credit No.: 61691591-000-07-17-2
 Registration Add: ROOM 603D 6/F HANG PONT COMMERCIAL BUILDING,31 TONKIN ST,CHEUNG SHA WAN,KL, HK
 Business Add: 1313 Floor 13 Fortune Building, Danstui Town Huiyang District, Huizhou, Guangdong, China

Has implemented and maintains a **Quality Management System**
 Which fulfills the requirements of the following standards
 GB/T19001-2016 idt ISO9001:2015

Scope of certification
 Sales of printed circuit boards

Initial Issuance period: February 27, 2018
 This certificate is valid during: February 27, 2018 -- February 26, 2021
 This certificate is invalid without CICC qualified label in the following period

First supervision and audit	Qualified mark	Second supervision and audit	Qualified mark
-----------------------------	----------------	------------------------------	----------------

The certification registration scope does't include those products/services scopes which fail to be covered by the relevant effective administrative permission and qualification permission required by the state. The effectiveness of this certificate shall be evaluated by annual surveillance audit of CICC. The certificate shall be valid when used together with the surveillance audit conclusion. The related information of this certification can be searched at the public website of company www.cicc.com.cn.

201726 201VZL430354 - Wiring, Printed - Component

UL ONLINE CERTIFICATIONS DIRECTORY

ZPMV2.E490354
Wiring, Printed - Component

For enhanced search functionality, please visit [UL's QCI Family of Databases](#).
 Click on a product designation for complete information.
[Page Bottom](#)

Wiring, Printed - Component

See General Information for Wiring, Printed - Components

O-LEADING SUPPLY CHAIN CO LIMITED 4190354
 Fortune Building, Nanheng West Road
 Room 1313
 Huizhou, Guangdong 516211, CHINA

Cond Width				Min		Max					
Min	Edge	Cond	SS/ Thk	Area DS/ Diam	Solder Limits	Dper	Temp	Flame	RoHS	C	
Typ	max(in)	mm(in)	mic(mil)	DSO	mm(in)	C	sec	C	Class	DSR	I
Multi-layer (mass laminate) printed wiring boards.											
O-LEADING-401											
	0.2 (0.004)	0.3 (0.012)	34 (1.34)	D6	12.7 (0.5)	260	10	130	V-0	-	-
O-LEADING-407											
	0.08 (0.003)	0.2 (0.008)	17 (0.67)	D5	9.2 (0.4)	260	10	170	V-0	NI	-
Multi-layer printed wiring boards.											
O-LEADING-408											
	0.125 (0.005)	0.125 (0.005)	12 (0.47) 31-135	D6	50.8 (2.0)	260	20	130	V-0	NI	1
Single layer printed wiring boards.											
O-LEADING-002											
	0.76 (0.015)	1.14 (0.045)	34 (1.34)	S5	19.1 (0.8)	260	10	105	V-0	NI	-
O-LEADING-003											
	0.38 (0.015)	1.14 (0.045)	34 (1.34)	S5	19.1 (0.8)	260	10	130	V-0	▲	-
O-LEADING-033											
	0.15 (0.006)	0.3 (0.012)	34 (1.34)	S5	25.4 (1.0)	260	10	120	V-0	NI	-
O-LEADING-205											
	0.1 (0.004)	0.3 (0.012)	34 (1.34)	D6	69.6 (2.7)	260	10	130	V-0	NI	-
O-LEADING-206											
	0.15 (0.006)	0.33 (0.013)	17 (0.67)	D5	69.6 (2.7)	260	10	130	V-0	NI	-

* - CTI marking is optional and may be marked on the printed wiring board.

Marking: Company name or file number and type designation. May be followed by a suffix to denote factory identification or burning test classification.
 Last updated on 2017-01-27

Questions? [Print this page](#) [Terms of Use](#) [Page Top](#)

SGS

Test Report No. CAVEC1805164701 Date: 03 Apr 2018 Page 2 of 8

Test Results:

Test Part Description:

Specimen No.	SGS Sample ID	Description
SN1	CAN18-051647.001	Green "PCB"

Remarks:

- (1) 1 mg/kg = 1 ppm = 0.0001%
- (2) MDL = Method Detection Limit
- (3) ND = Not Detected (< MDL)
- (4) "-" = Not Regulated

RoHS Directive (EU) 2015/863 amending Annex II to Directive 2011/65/EU

Test Method: With reference to IEC 62321-4:2014+A1:2017, IEC 62321-5:2013, IEC 62321-7-2:2017, IEC 62321-6:2015 and IEC 62321-8:2017, analyzed by ICP-OES, UV-Vis and GC-MS.

Test Item(s)	Limit	Unit	MDL	Det
Cadmium (Cd)	100	mg/kg	2	ND
Lead (Pb)	1,000	mg/kg	2	9
Mercury (Hg)	1,000	mg/kg	2	ND
Hexavalent Chromium (CrVI)	1,000	mg/kg	8	ND
Sum of PBBs	1,000	mg/kg	-	ND
Monobromobiphenyl	-	mg/kg	5	ND
Dibromobiphenyl	-	mg/kg	5	ND
Tribromobiphenyl	-	mg/kg	5	ND
Tetrabromobiphenyl	-	mg/kg	5	ND
Pentabromobiphenyl	-	mg/kg	5	ND
Hexabromobiphenyl	-	mg/kg	5	ND
Heptabromobiphenyl	-	mg/kg	5	ND
Octabromobiphenyl	-	mg/kg	5	ND
Nonabromobiphenyl	-	mg/kg	5	ND
Decabromobiphenyl	-	mg/kg	5	ND
Sum of PBDEs	1,000	mg/kg	-	ND
Monobromodiphenyl ether	-	mg/kg	5	ND
Dibromodiphenyl ether	-	mg/kg	5	ND
Tribromodiphenyl ether	-	mg/kg	5	ND
Tetrabromodiphenyl ether	-	mg/kg	5	ND
Pentabromodiphenyl ether	-	mg/kg	5	ND

We warrant that the information provided in this document is correct to the best of our knowledge and belief. Conditions of Service apply to this report. For more information, please refer to the Terms and Conditions of Service available on the SGS website. SGS is not responsible for the accuracy of the information provided in this document. The information provided in this document is for reference only and does not constitute a warranty. The information provided in this document is subject to change without notice. The information provided in this document is not intended to be used as a substitute for professional advice. The information provided in this document is not intended to be used as a substitute for professional advice. The information provided in this document is not intended to be used as a substitute for professional advice.

SGS (China) Limited, 100000, Beijing, China. Tel: +86 10 8546 6666. Fax: +86 10 8546 6667. Email: china@sgs.com.cn. Website: www.sgs.com.cn

Packaging & Delivery

Packaging Details	16 years professional OEM pcb board manufacturer
Delivery Detail	7-12days



FAQ

1. How do O-Leading ensure quality?

Our high quality standard is achieved with the following.

- 1.The process is strictly controlled under ISO 9001:2008 standards.
- 2.Extensive use of software in managing the production process
- 3.State-of-art testing equipments and tools. E.g. Flying Probe, X-ray Inspection, AOI (Automated Optical Inspector) and ICT (in-circuit testing).
- 4.Dedicated quality assurance team with failure case analysis process
- 5.Continuous staff training and education

2. How do O-Leading keep your price competitive?

Over the last decade, prices of many raw materials (e.g. copper, chemicals) had doubled, tripled or quadrupled; Chinese currency RMB had appreciated 31% over US dollar; And our labor cost also increased significantly. However, O-Leading have kept our pricing steady. This owns entirely to our innovations in reducing cost, avoiding wastes and improving efficiency. Our prices are very competitive in the industry at the same quality level.

We believe in a win-win partnership with our customers. Our partnership will be mutually beneficial if we can provide you an edge on cost and quality.

3. What kinds of boards can O-Leading process?

Common FR4, high-TG and halogen-free boards, Rogers, Arlon, Telfon, aluminum/copper-based boards, PI, etc.

4. What data are needed for PCB production?

It is best to provide data in Gerber 274-X format. In addition, Cam350, CAD, Protel 99se, PADS, DXP and Eagle can also be processed.

5. What's the typical process flow for multi-layer PCB?

Material cutting → Inner dry film → inner etching → Inner AOI → Multi-bond → Layer stack up Pressing → Drilling → PTH → Panel Plating → Outer Dry Film → Pattern Plating → Outer etching → Outer AOI → Solder Mask → Component Mark → Surface finish → Routing → E/T → Visual Inspection.