

COPPER PLATE HOLES MINIMUM .025 AVG, .020 MIN.. HOLES MAY NOT BE PLUGGED

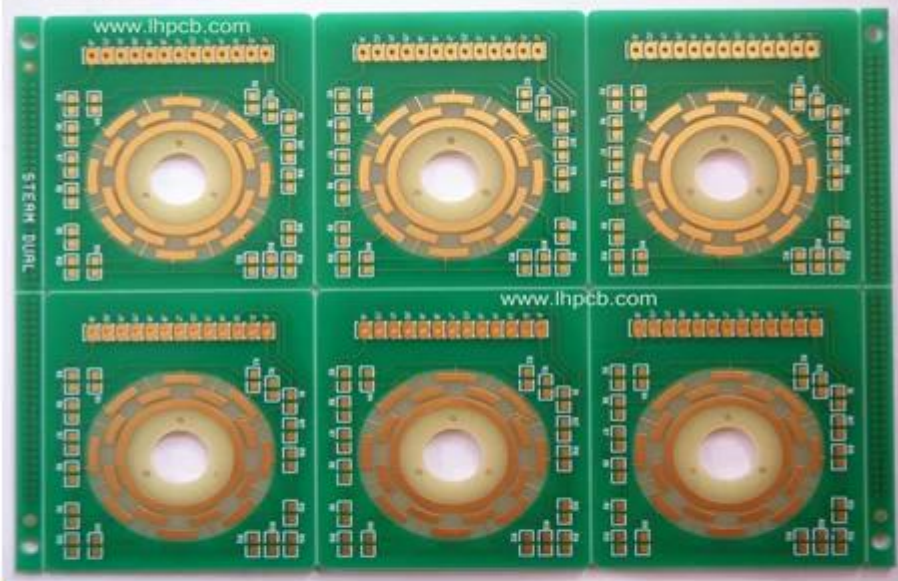
•Special requirement:ENIG, Hard gold thickness: 4UM, Impedance: Tol: +/-7%, the deviation of the impedance in the same layer must not exceed +/- 2Ohm, Back drill, Rotated 7 degree.

Pack with colorless transparent bubble film ,25 PCS/ bag, put desiccant in flank, put humidity indicator card on top side

Layer structure

| Lyr | Image | Foil | Ilame |
|------|-------|-------|--|
| COMP | | 0.5oz | Foil 1/2oz |
| | | | R-5670(G) 3313 RC54% |
| L2 | | 0.5oz | |
| L3 | | 0.5oz | R-5775(G) 0.150mm H/H 37"*49"(1080*2)(RTF) |
| | | | R-5670(G) 1078 RC68% |
| | | | R-5670(G) 1035 RC70% |
| L4 | | 0.5oz | |
| L5 | | 0.5oz | R-5775(G) 0.150mm H/H 37"*49"(1080*2)(RTF) |
| | | | R-5670(G) 1078 RC68% |
| | | | R-5670(G) 1035 RC70% |
| L6 | | 0.5oz | |
| L7 | | 0.5oz | R-5775(G) 0.150mm H/H 37"*49"(1080*2)(RTF) |
| | | | R-5670(G) 1078 RC68% |
| | | | R-5670(G) 1035 RC70% |
| L8 | | 0.5oz | |
| L9 | | 2oz | R-5775(G) 0.140mm H/2 37"*49"(1078*2)(RTF) |
| | | | R-5670(G) 2116 RC54% |
| | | | R-5670(G) 2116 RC54% |
| | | | R-5670(G) 2116 RC54% |
| L10 | | 2oz | |
| L11 | | 0.5oz | R-5775(G) 0.140mm H/2 37"*49"(1078*2)(RTF) |
| | | | R-5670(G) 1035 RC70% |
| | | | R-5670(G) 1078 RC68% |
| L12 | | 0.5oz | |
| L13 | | 0.5oz | R-5775(G) 0.150mm H/H 37"*49"(1080*2)(RTF) |
| | | | R-5670(G) 1035 RC70% |
| | | | R-5670(G) 1078 RC68% |
| L14 | | 0.5oz | |
| L15 | | 0.5oz | R-5775(G) 0.150mm H/H 37"*49"(1080*2)(RTF) |
| | | | R-5670(G) 1035 RC70% |
| | | | R-5670(G) 1078 RC68% |
| L16 | | 0.5oz | |
| L17 | | 0.5oz | R-5775(G) 0.150mm H/H 37"*49"(1080*2)(RTF) |
| | | | R-5670(G) 3313 RC54% |
| SOLD | | 0.5oz | Foil 1/2oz |

O-LEADING
To Be Reliable, To Be Valuable



www.o-leading.com

O-LEADING
To Be Reliable, To Be Valuable



www.o-leading.com

O-LEADING
To Be Reliable, To Be Valuable



www.o-leading.com

[HDI pcb Printed circuit board, china pcb manufacture](#)