

## Welcome to O-leading

We are professional PCB manufacturer with more than ten years experiences . Products range-single, double side ,multi-layer PCB ,flexible PCB and MCPCB.We can provide fast prototype service - S/S in 24hrs , 4-8layers in 48-96 working hrs production time.

[HDI PCB manufacturer china](#)

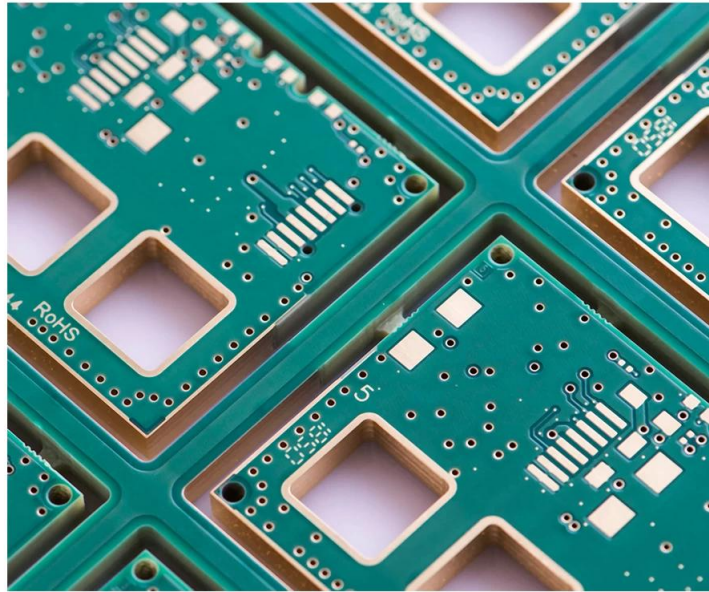
COPPER PLATE HOLES MINIMUM .025 AVG, .020 MIN.. HOLES MAY NOT BE PLUGGED

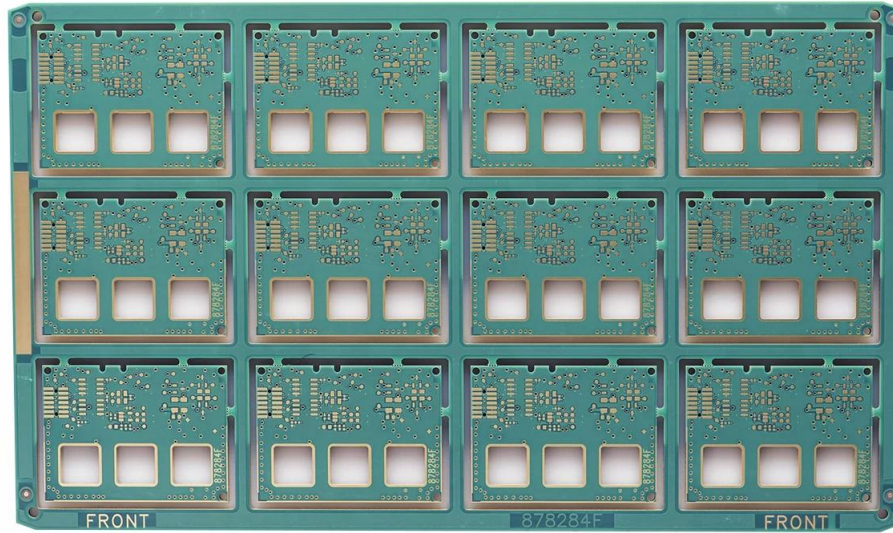
Pack with colorless transparent bubble film ,25 PCS/ bag, put desiccant in flank, put humidity indicator card on top side

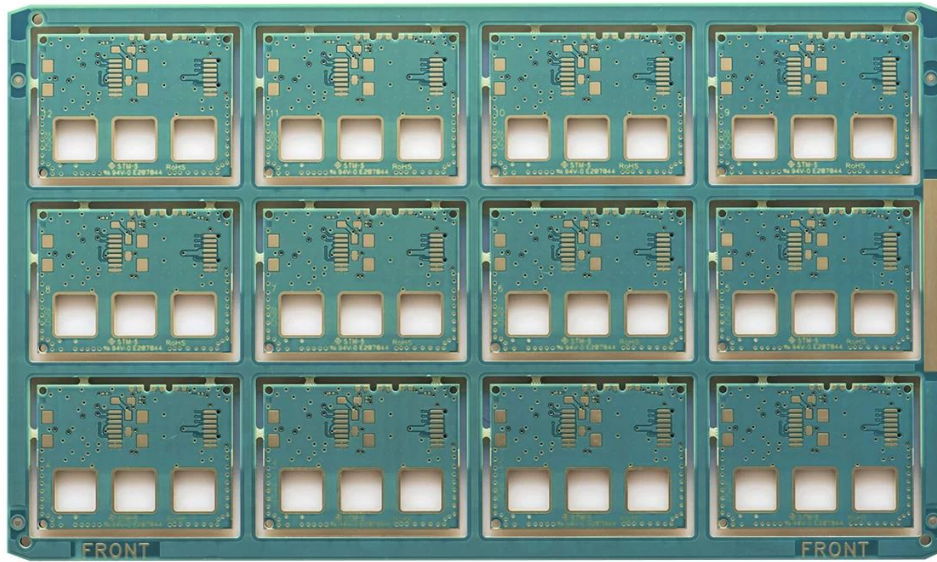
PLEASE CLICK THESE FOR MORE INFORMATION

## Product Description

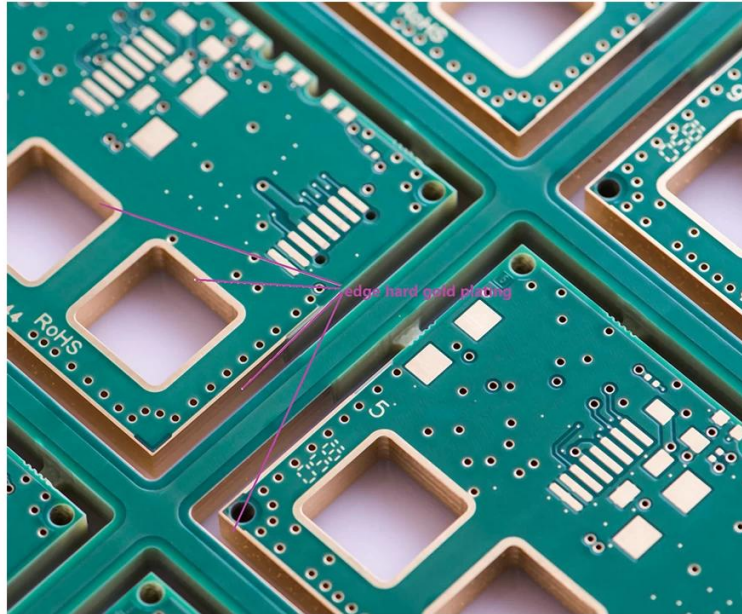
PCB P/N	878284-E
Layer Count	6L HDI
Material	FR-4 TG180
Board thk	3.80mm
copper thk	1/1/1/1/1/1oz
Smallest hole size	0.1MM
No. of holes (pcs)	725
line w/s	8/8mil
Impedance control. Y / N (Tol %)	N
Surface Finishing:ENIG Au	0.075-0.125UM
Solder Mask Silkscreen	Matte Green / White
Single board size	Dim X (mm):51;Dim Y (mm):37.7
Panelisation	Dim X (mm):244;Dim Y (mm):145;No Of UPS:12
Special:peelable mask	N
Routing/Punching	CNC

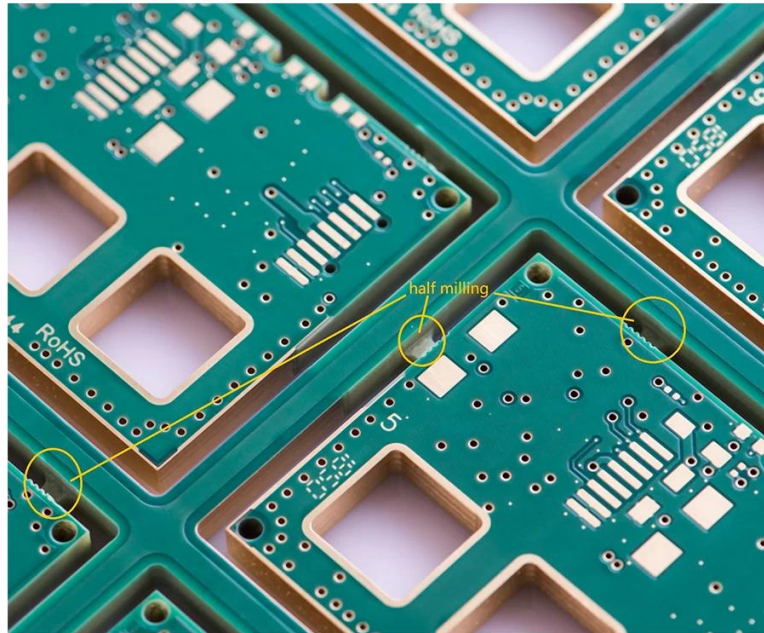












[www.o-leading.com](http://www.o-leading.com)

[Panel Plating Gold wholesales](#)

**Our Team**







Certifications





CICC INSPECTION CERTIFICATION



**QUALITY MANAGEMENT SYSTEM CERTIFICATE**

Certificate No.: 16118Q10347R05

**We hereby certify that**  
**O-LEADING SUPPLY CHAIN(HK) CO.,LIMITED**

Credit No.: 61691591-000-07-17-2

Registration Add: ROOM 603D 6/F HANG PONT COMMERCIAL BUILDING, 31 TONKIN ST. CHEUNG SHA WAN, K.L. HK  
Business Add: 1313 Floor 13 Fortune Building, Danshui Town, Huiyang District, Huizhou, Guangdong, China

Has implemented and maintains a **Quality Management System**  
Which fulfils the requirements of the following standards  
GB/T19001-2016 idt ISO9001:2015

**Scope of certification**

Sales of printed circuit boards

Initial Issuance period: February 27, 2018

This certificate is valid during: February 27, 2018 -- February 26, 2021

This certificate is invalid without CICC qualified label in the following period

First supervision and audit	Qualified mark	Second supervision and audit	Qualified mark
-----------------------------	----------------	------------------------------	----------------

The certification registration scope does not include those products/services scopes which fail to be covered by the relevant effective administrative provisions and qualification provisions required by the state. The effectiveness of this certificate shall be evaluated by annual surveillance audit of CICC. The certificate shall be valid when used together with the surveillance audit conclusion. The related information of this certification can be searched at the public website of company www.cicc.com.cn.



201726

ZPMV2.E490354 - Wiring, Printed - Component



**ZPMV2.E490354**  
**Wiring, Printed - Component**

For enhanced search functionality, please visit UL's [UL Product Databases](#).  
Click on a product designation for complete information.  
[Page Bottom](#)

**Wiring, Printed - Component**

[See General Information for Wiring, Printed - Components](#)

**O-LEADING SUPPLY CHAIN CO LIMITED**

Fortune Building, Nanheng West Road  
Room 1313  
Huizhou, Guangdong 516211, CHINA

E490354

	Cond Width			SS/ DS/ Diam	Area	Solder		Temp		Flame	RoHS	C
	Min	Max	Edge			Min	Max	Class	DSR			
Typ	max(in)	mm(in)	mil(mm)	DSO	mm <sup>2</sup> (in <sup>2</sup> )	C	sec	C	Class	Class	DSR	I
<b>Hull-layer (mass laminate) printed wiring boards.</b>												
<b>O-LEADING-401</b>												
	0.2 (0.004)	0.3 (0.012)	34 (1.34)	D6	12.7 (0.5)	260	10	130	V-0	-	-	-
<b>O-LEADING-407</b>												
	0.08 (0.003)	0.2 (0.008)	17 (0.67)	D5	9.2 (0.4)	260	10	170	V-0	NI	-	-
<b>Hull-layer printed wiring boards.</b>												
<b>O-LEADING-408</b>												
	0.125 (0.005)	0.125 (0.005)	12 (0.47) 31(1.25)	D6	50.8 (2.0)	260	20	130	V-0	NI	-	-
<b>Single layer printed wiring boards.</b>												
<b>O-LEADING-002</b>												
	0.76 (0.015)	1.14 (0.045)	34 (1.34)	S5	19.1 (0.8)	260	10	105	V-0	NI	-	-
<b>O-LEADING-003</b>												
	0.38 (0.015)	1.14 (0.045)	34 (1.34)	S5	19.1 (0.8)	260	10	130	V-0	▲	-	-
<b>O-LEADING-033</b>												
	0.15 (0.006)	0.3 (0.012)	34 (1.34)	S5	25.4 (1.0)	260	10	120	V-0	NI	-	-
<b>O-LEADING-205</b>												
	0.2 (0.004)	0.3 (0.012)	34 (1.34)	D6	69.6 (2.7)	260	10	130	V-0	NI	-	-
<b>O-LEADING-206</b>												
	0.15 (0.006)	0.33 (0.013)	17 (0.67)	D5	69.6 (2.7)	260	10	130	V-0	NI	-	-

\* - CTI marking is optional and may be marked on the printed wiring board.

Marking: Company name or file number and type designation. May be followed by a suffix to denote factory identification or burning test classification.  
Last updated on 2017-01-27

Questions? [Print this page](#) [Terms of Use](#) [Page Top](#)

http://www.ul.com/ulcertification/UL60718RMS/ulcertification/ZPMV2.E490354/Wiring,Printed-Component/17



**Test Report**

No. CAVEC1805164701

Date: 03 Apr 2018

Page 2 of 8

Test Results:

Test Part Description:

**Specimen No.**    **SGS Sample ID**    **Description**  
SN1            CAN18-051647.001    Green "PCB"

Remarks:

- (1) 1 mg/kg = 1 ppm = 0.0001%
- (2) MDL = Method Detection Limit
- (3) ND = Not Detected (< MDL)
- (4) "-" = Not Regulated

**RoHS Directive (EU) 2015/863 amending Annex II to Directive 2011/65/EU**

Test Method: With reference to IEC 62321-4:2014+A1:2017, IEC62321-5:2013, IEC62321-7-2:2017, IEC 62321-6:2015 and IEC62321-8:2017, analyzed by ICP-OES, UV-Vis and GC-MS.

Test Item(s)	Limit	Unit	MDL	Det
Cadmium (Cd)	100	mg/kg	2	ND
Lead (Pb)	1,000	mg/kg	2	9
Mercury (Hg)	1,000	mg/kg	2	ND
Hexavalent Chromium (CrVI)	1,000	mg/kg	8	ND
Sum of PBBs	1,000	mg/kg	-	ND
Monobromobiphenyl	-	mg/kg	5	ND
Dibromobiphenyl	-	mg/kg	5	ND
Tribromobiphenyl	-	mg/kg	5	ND
Tetrabromobiphenyl	-	mg/kg	5	ND
Pentabromobiphenyl	-	mg/kg	5	ND
Hexabromobiphenyl	-	mg/kg	5	ND
Heptabromobiphenyl	-	mg/kg	5	ND
Octabromobiphenyl	-	mg/kg	5	ND
Nonabromobiphenyl	-	mg/kg	5	ND
Decabromobiphenyl	-	mg/kg	5	ND
Sum of PBDEs	1,000	mg/kg	-	ND
Monobromodiphenyl ether	-	mg/kg	5	ND
Dibromodiphenyl ether	-	mg/kg	5	ND
Tribromodiphenyl ether	-	mg/kg	5	ND
Tetrabromodiphenyl ether	-	mg/kg	5	ND
Pentabromodiphenyl ether	-	mg/kg	5	ND



SGS is pleased to announce that it has been awarded the ISO 9001:2015 certification by the Bureau Veritas Certification Group. The certification covers the entire range of SGS services in China. SGS is a leader in the field of testing, inspection and certification services. SGS is a member of the International Organization of Standardization (ISO) and the International Electrotechnical Commission (IEC). SGS is also a member of the International Union of Pure and Applied Chemistry (IUPAC) and the International Union of Pure and Applied Physics (IUPAP). SGS is a member of the International Union of Pure and Applied Mathematics (IUPM) and the International Union of Pure and Applied Biology (IUPAB). SGS is a member of the International Union of Pure and Applied Geology (IUPG) and the International Union of Pure and Applied Meteorology (IUPM).

Member of the SGS Group (SGLS)

## Packaging & Delivery

Packaging Details	16 years professional OEM pcb board manufacturer
Delivery Detail	7-12days



## FAQ

1. How do O-Leading ensure quality? [ENIPIG HDI manufacturer china](#)

Our high quality standard is achieved with the following.

- 1.The process is strictly controlled under ISO 9001:2008 standards.
- 2.Extensive use of software in managing the production process
- 3.State-of-art testing equipments and tools. E.g. Flying Probe, X-ray Inspection, AOI (Automated Optical Inspector) and ICT (in-circuit testing).
- 4.Dedicated quality assurance team with failure case analysis process
- 5.Continuous staff training and education

2. How do O-Leading keep your price competitive?

Over the last decade, prices of many raw materials (e.g. copper, chemicals) had doubled, tripled or quadrupled; Chinese currency RMB had appreciated 31% over US dollar; And our labor cost also increased significantly. However, O-Leading have kept our pricing steady. This owns entirely to our innovations in reducing cost, avoiding wastes and improving efficiency. Our prices are very competitive in the industry at the same quality level.

We believe in a win-win partnership with our customers. Our partnership will be mutually beneficial if we can provide you an edge on cost and quality.

3. What kinds of boards can O-Leading process?

Common FR4, high-TG and halogen-free boards, Rogers, Arlon, Telfon, aluminum/copper-based boards, PI, etc.

4. What data are needed for PCB production?

It is best to provide data in Gerber 274-X format. In addition, Cam350, CAD, Protel 99se, PADS, DXP and Eagle can also be processed.

5. What's the typical process flow for multi-layer PCB?

Material cutting → Inner dry film → inner etching → Inner AOI → Multi-bond → Layer stack up  
Pressing → Drilling → PTH → Panel Plating → Outer Dry Film → Pattern Plating → Outer etching →  
Outer AOI → Solder Mask → Component Mark → Surface finish → Routing → E/T → Visual Inspection.