

Welcome to O-leading

O-Leading strives to be your one stop solution partner in EMS supply chain, including PCB design , PCB fabrication and PCB assembly (PCBA).We provide some of the most advanced PCB technology, including HDI PCBs,multilayer PCBs, Rigid-Flexible PCBs.We can support from quick turn prototype to medium & mass Production. [Double sided pcb manufacturer china](#)

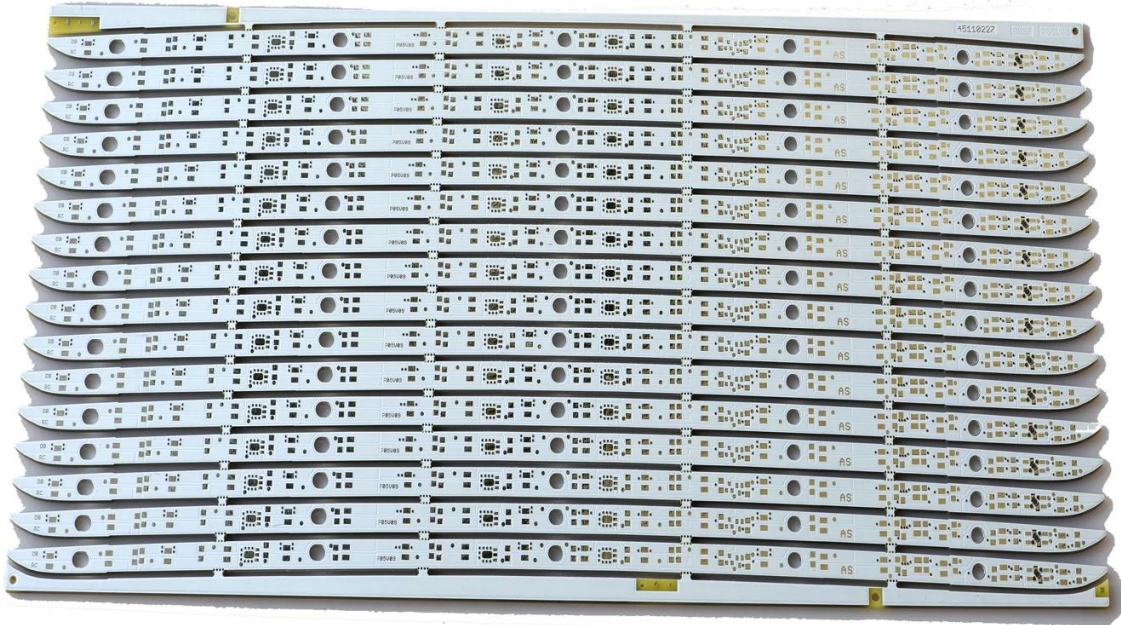
In general, our global customers are very impressed with our services:rapid response, competitive price and quality commitment.Providing more valuable technical service and overall solution is the way O-leading forward.

Looking to the future, O-leading will concentrate on the innovation and development of electronics manufacturing technology as always, and make persistent efforts on PCB & PCBA one-stop service to provide first-class services and create more value for our customers.[Golden Fingers PCB manufacturer china](#)

Product Description

| | |
|----------------------------------|--|
| PCB P/N | OBE235T |
| Layer Count | 2L |
| Material | FR-4 TG130 |
| Board thk | 1.6mm |
| copper thk | 1/1oz |
| Smallest hole size | 0.4mm |
| No. of holes (pcs) | 85 |
| line w/s | 10/12mil |
| Impedance control. Y / N (Tol %) | N |
| Surface Finishing | HASL-LF |
| Solder Mask Silkscreen | White / N/A |
| Single board size | Dim X (mm):437; Dim Y (mm):8.5 |
| Panelisation | Dim X (mm):437; Dim Y (mm):178; No Of UPS:16 |
| Special | N |
| Routing/Punching | CNC |

□



www.o-leading.com

Multilayer pcb Printed company

Our Team



Factory PCB



Automatic vacuum press machine



Drilling Machine



Pattern Plating Machine



Scrubbing Machine



Developing Machine



Routing Machine



High-speed flying probe machine



E-test Machine

Factory SMT



Certifications

CICC INSPECTION CERTIFICATION



嘉泰认证

QUALITY MANAGEMENT SYSTEM CERTIFICATE

Certificate No: 18118Q10347R05

We hereby certify that
O-LEADING SUPPLY CHAIN(HK) CO.,LIMITED
 Credit No: 61691591-000-07-18-7
 Registration Add: FLAT/RM 1205 12/F TAI SANG BANK BUILDING 130-132 DES VOEUS ROAD CENTRAL HK
 Business Add: 1213, Floor 13, Fortune Building, Danshui Town, Huiyang District, Huizhou, Guangdong, China

Has implemented and maintains a **Quality Management System** Which fulfills the requirements of the following standards
 GB/T19001-2016 idt ISO9001:2015

Scope of certification
 Sales of printed circuit boards

Initial issuance period: February 27, 2018
 Renewal date: April 22, 2019
 This certificate is valid during: April 22, 2019 – February 26, 2021
 This certificate is invalid without CICC qualified label in the following period

| | | |
|-----------------------------|------------------------------|----------------|
| First supervision and audit | Second supervision and audit | Qualified mark |
|-----------------------------|------------------------------|----------------|

The certification registration number does not include those production stages which fail to be covered by the relevant effective administrative procedures and qualification procedures mentioned in the scope. The effectiveness of this certificate shall be restricted to actual surveillance scope of CICC. The certificate shall be valid when used together with the qualified label issued by CICC.

The initial issuance of this certification can be searched on the portal of CICC www.cicc.com.cn by the code of inquiry www.cicc.com.cn.






CICC INSPECTION CERTIFICATION



嘉泰认证

质量管理体系认证证书

证书号: 18118Q10347R05

兹证明
诚领供应链(香港)有限公司
 统一社会信用代码: 61691591-000-07-18-7
 注册地址: 香港中環德輔道中130-132號大生銀行大廈1205室
 经营地址: 广东惠州惠阳淡水南亨西路财富大厦13楼1313

建立的质量管理体系符合
 GB/T19001-2016 idt ISO9001:2015 质量标准适用条款的要求

认证范围
 印刷线路板的销售

初次获证日期: 2018年02月27日
 换证日期: 2019年04月22日
 证书有效期: 自2019年04月22日至2021年02月26日
 在下列期限内, 未经CICC黏贴合格标贴, 本证书无效

| | | |
|-------|-------|-----|
| 第一次监督 | 第二次监督 | 黏贴处 |
|-------|-------|-----|

本证书认证范围不包括未取得有效的国家规定的行政许可、资质许可的产品/服务范围; 本证书通过CICC定期监督审核保持, 与年度《保持认证通知书》共同方为有效; 本证书信息可在国家认监委网站: www.cnca.gov.cn 及CICC网站 www.cicc.com.cn 查询。








Test Report

No. SZXEC1900530401 Date: 30 Mar 2019 Page 1 of 6

O-LEADING SUPPLY CHAIN (HK) CO., LIMITED

1313.FLOOR 13, FORTUNE BUILDING, DANSHUI TOWN, HUIYANG DISTRICT, HUIZHOU, GUANGDONG, CHINA

The following sample(s) was/were submitted and identified on behalf of the clients as : OSP

SGS Job No. : RP19-005089 - SZ
Date of Sample Received : 22 Mar 2019
Testing Period : 22 Mar 2019 - 30 Mar 2019
Test Requested : Selected test(s) as requested by client.
Test Method : Please refer to next page(s).
Test Results : Please refer to next page(s).

Conclusion : Based on the performed tests on submitted sample(s), the results of Lead, Mercury, Cadmium, Hexavalent chromium, Polybrominated biphenyls (PBBs), Polybrominated diphenyl ethers (PBDEs) and Phthalates such as Bis(2-ethylhexyl) phthalate (DEHP) , Butyl benzyl phthalate (BBP), Dibutyl phthalate (DBP) , and Diisobutyl phthalate (DIBP) comply with the limits as set by RoHS Directive (EU) 2015/863 amending Annex II to Directive 2011/65/EU.

Signed for and on behalf of
SGS-CSTC Standards Technical Services Co., Ltd. Shenzhen Branch

Tina
Tina Fan
Approved Signatory



Unless otherwise agreed in writing, this document is issued by the Company subject to its General Conditions of Service printed overleaf, available on request or accessible at http://www.sgs.com/terms-and-conditions.aspx and, for electronic format documents, subject to Terms and Conditions for Electronic Documents at http://www.sgs.com/terms-and-conditions/Electronic-Document.aspx. Attention is drawn to the limitation of liability, indemnification and jurisdiction issues defined therein. Any holder of this document is advised that unless he/she expressly agrees to the Company's liability at the time of its intended use, the limits of the Company's liability are restricted to the extent of the Company's liability under the applicable law. This document does not constitute an offer of any financial product or service of the Company. Any disclaimer, limitation, survey or indemnification to the contrary appearing in this document is unlawful and offenders may be prosecuted to the fullest extent of the law. Unless otherwise stated the results shown in this report refer only to the samples tested.

Member of the SGS Group (SGS SA)



Test Report

No. SZXEC1900530401 Date: 30 Mar 2019 Page 2 of 6

Test Results :

Test Part Description :

Table with 3 columns: Specimen No., SGS Sample ID, Description. Row 1: SN1, SZX19-005304.001, Green"PCB"

Remarks :

- (1) 1 mg/kg = 1 ppm = 0.0001%
(2) MDL = Method Detection Limit
(3) ND = Not Detected (< MDL)
(4) "-" = Not Regulated

RoHS Directive (EU) 2015/863 amending Annex II to Directive 2011/65/EU

Test Method : With reference to IEC 62321-4:2013+A1:2017, IEC 62321-5:2013, IEC 62321-7-2:2017, IEC 62321-6:2015 and IEC 62321-8:2017, analyzed by ICP-OES, UV-Vis and GC-MS.

Table with 5 columns: Test Item(s), Limit, Unit, MDL, 0/1. Lists various substances like Cadmium, Lead, Mercury, Hexavalent Chromium, Sum of PBBs, etc. with their respective limits and detection results.



Unless otherwise agreed in writing, this document is issued by the Company subject to its General Conditions of Service printed overleaf, available on request or accessible at http://www.sgs.com/terms-and-conditions.aspx and, for electronic format documents, subject to Terms and Conditions for Electronic Documents at http://www.sgs.com/terms-and-conditions/Electronic-Document.aspx. Attention is drawn to the limitation of liability, indemnification and jurisdiction issues defined therein. Any holder of this document is advised that unless he/she expressly agrees to the Company's liability at the time of its intended use, the limits of the Company's liability are restricted to the extent of the Company's liability under the applicable law. This document does not constitute an offer of any financial product or service of the Company. Any disclaimer, limitation, survey or indemnification to the contrary appearing in this document is unlawful and offenders may be prosecuted to the fullest extent of the law. Unless otherwise stated the results shown in this report refer only to the samples tested.

Member of the SGS Group (SGS SA)



ZPMV2.E490354 - WIRING, PRINTED - COMPONENT

Wiring, Printed - Component

See General Information for Wiring, Printed - Component

O-LEADING SUPPLY CHAIN (HK) CO LTD
 ROOM 1205, 12/F
 TAI SANG BANK BLDG
 130-132 DES VOEUS ROAD
 CENTRAL, HONG KONG

E490354

| Type | Cond Width | | Cond Thk | SS/ DS/ DSO | Max | Max | | Meets | C | | | |
|--|---------------|---------------|----------------------|-------------|------------|--------|------|-------|-------|-------|-----|---|
| | Min | Edge | | | Area | Solder | Oper | | | Flame | | |
| | mm(in) | mm(in) | mic(mil) | | mm(in) | C | sec | C | Class | UL796 | DSR | I |
| Multilayer (mass laminate) printed wiring boards. | | | | | | | | | | | | |
| O-LEADING-401 | 0.1 (0.004) | 0.3 (0.012) | 34 (1.34) | DS | 12.7 (0.5) | 260 | 10 | 130 | V-0 | - | - | |
| O-LEADING-407 | 0.08 (0.003) | 0.2 (0.008) | 17 (0.67) | DS | 9.7 (0.4) | 260 | 10 | 130 | V-0 | All | - | |
| Multilayer printed wiring boards. | | | | | | | | | | | | |
| O-LEADING-408 | 0.125 (0.005) | 0.125 (0.005) | 12 (0.47) Int:136 | DS | 50.8 (2.0) | 280 | 20 | 130 | V-0 | All | * | |
| Single layer printed wiring boards. | | | | | | | | | | | | |
| O-LEADING-002 | 0.38 (0.015) | 1.14 (0.045) | 34 (1.34) | SS | 19.1 (0.8) | 260 | 10 | 105 | V-0 | All | - | |
| O-LEADING-003 | 0.38 (0.015) | 1.14 (0.045) | 34 (1.34) | SS | 19.1 (0.8) | 260 | 10 | 130 | V-0 | ▲ | - | |
| O-LEADING-033 | 0.15 (0.006) | 0.3 (0.012) | 34 (1.34) | SS | 25.4 (1.0) | 260 | 10 | 120 | V-0 | All | - | |
| O-LEADING-205 | 0.1 (0.004) | 0.3 (0.012) | 34 (1.34) | DS | 69.6 (2.7) | 260 | 10 | 130 | V-0 | All | - | |
| O-LEADING-206 | 0.15 (0.006) | 0.33 (0.013) | 17 (0.67) | DS | 69.6 (2.7) | 260 | 10 | 130 | V-0 | All | - | |
| O-LEADING-D01 | 0.14 (0.006) | 0.15 (0.006) | 33 (1.30) | DS | 25.4 (1.0) | 260 | 10 | 130 | V-0 | All | * | |
| O-LEADING-S01 | 0.25 (0.010) | 0.25 (0.010) | 17 (0.67) | SS | 25.4 (1.0) | 260 | 4 | 130 | V-0 | All | * | |

WIRING, PRINTED - COMPONENT | UL Product iQ

| | | | | | | | | | | | | |
|----------------------|--------------|--------------|-----------|----|------------|-----|---|-----|-----|-----|---|--|
| O-LEADING-S02 | 0.2 (0.008) | 0.2 (0.008) | 17 (0.67) | SS | 25.4 (1.0) | 260 | 4 | 130 | HB | ▲ | * | |
| O-LEADING-S03 | 0.25 (0.010) | 0.25 (0.010) | 34 (1.34) | SS | 25.4 (1.0) | 260 | 4 | 130 | V-0 | All | * | |

* - CTI marking is optional and may be marked on the printed wiring board.

Marking: Company name or file number and type designation. May be followed by a suffix to denote factory identification or burning test classification.

并不是所有出现在本数据库中的公司名称和产品都满足了UL跟踪检验服务的要求。只有带有UL标志的产品，才应该被视为经过UL认证，并满足UL跟踪检验服务的要求。注意查看产品上的标志。

UL 允许在线认证目录中所含材料的复制遵循以下条件：1.指南信息、装配、构造、设计、系统和/或认证（文件）必须在不篡改任何数据（或图纸）的情况下完整且无误导性地呈现。2.经UL允许从在线认证目录转载“声明必须出现在所提取材料的邻近位置。此外，转载材料必须包含以下格式的版权声明：“© 2019 UL LLC”

Packaging & Delivery

Shipping service



| Quick Turn Lead Time | | |
|----------------------|----------|---------------------|
| Layer Count: | Lead Tim | Special Requirement |
| 1L/2L | 2-3days | 24 Hours,48 Hours |
| 4L | 3-4days | 48 Hours |
| 6L | 4-5days | 72 Hours |
| 8L | 5-6days | NA |
| 10L | 6-7days | NA |
| 12L | 7-8days | NA |
| 14L | 8-9days | NA |

| Standard Lead Time | | |
|--------------------|------------------|------------------------|
| Layer Count: | Sample Lead Time | Volume order lead time |
| 2L | 4 days | 10 days |
| 4L | 5 days | 11 days |
| 6L | 6 days | 12 days |
| 8L | 8 days | 14 days |
| 10L | 10 days | 16 days |
| 12L | 12 days | 18 days |
| 14L | 14 days | 20 days |
| 16-32L | 18 days | 24 days |

Process Capability

PCB Production Capabilities

Layer Count: 1Layer-32Layer

Finished copper thickness 1/3oz-12oz

Min Line width/spacing internal 3.0mil/3.0mil

Min Line width/spacing external: 4.0mil/4.0mil

Max Aspect Ratio: 10:1

Board thickness 0.2mm-5.0mm

Max Panel size(inches): 635*1500mm

Minimum Drilled Hole Size: 4mil

Plated Hole Tolerance: +/-3mil

Blind/Buried Vias (All Types): YES

Via Fill(Conductive,Non-Conductive): YES

Base Material: FR-4,FR-4high Tg,Halogen free material,Rogers,Aluminium base,Polyimide,

Heavy Copper

Surface finishes: HASL,OSP,ENIG,HAL-LF,Immersion silver,Immersion Tin,Gold fingers,Carbon ink

SMT Production Capabilities

PCB Material: FR-4,CEM-1,CEM-3,Aluminum-based board
Max PCB size: 510x460mm
Min PCB size□50x50mm
PCB Thickness□0.5mm-4.5mm
Board thickness□0.5-4mm
Min Components size: 0201
Standard chip size component: 0603 and larger
Component max height□15mm
Min lead pitch: 0.3mm
Min BGA ball pitch:0.4mm
Placement precision: +/-0.03mm