

# Bienvenue chez O-Leading

O-Leading s'efforce d'être votre partenaire de solution unique dans la chaîne d'approvisionnement EMS, y compris la conception de PCB, la fabrication de PCB et l'assemblage de PCB (PCBA). Nous fournissons certaines des technologies de PCB les plus avancées, y compris les PCB HDI, les PCB multicouches, les PCB rigides et flexibles. Nous pouvons prendre en charge du prototype à virage rapide à la production moyenne et en masse. ([fabricant de carte PCB de porcelaine](#))

En général, nos clients mondiaux sont très impressionnés par nos services: une réponse rapide, un prix compétitif et un engagement de qualité.

En regardant vers l'avenir, O-Leading se concentrera sur l'innovation et le développement de la technologie de fabrication électronique comme toujours, et déploiera des efforts persistants sur le service unique PCB & PCBA pour fournir des services de première classe et créer plus de valeur pour nos clients.

VEUILLEZ CLIQUER ICI POUR PLUS D'INFORMATIONS: [carte PCB de banque de puissance imprimée](#)

## Description du produit

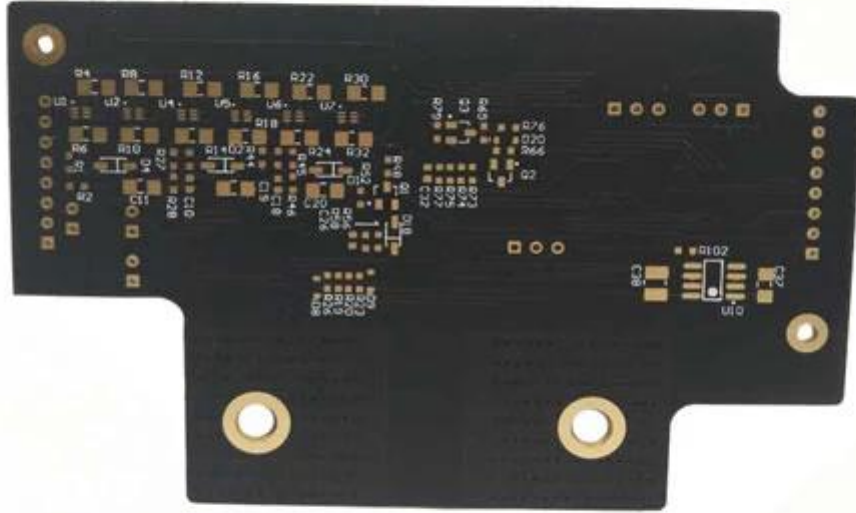
Lieu d'origine	Guang dong, Chine (continentale)	Marque	O-leader
Matériel de base	FR-4, aluminium	Épaisseur de cuivre	0,5 oz-5 oz
Min. Taille du trou	0,2 mm	Min. Largeur de ligne	0,2 mm
Finition de surface	immersion or, OSP, sans plomb HASL	Épaisseur du panneau	0,1 à 5 mm
applicable à	ed, téléphone portable, climatiseurs, machines à laver	personnage	PCB de contrôle industriel
certificats	ISO9001, UL, RoHS, SGS	Q / CTN	10PCS-100PCS
poids	0,01 kg -5 kg	MOQ	10 pièces
Numéro de modèle	fabricant de pcba d'assemblage de carte de banque de puissance	Min. Interligne	0,2 mm
Couleur	bleu, rouge, vert, noir,jaune	prix	0.1 \$ à 10 \$
type de desigh	exigence du client	Taille	0,01 m3 à 10 m3

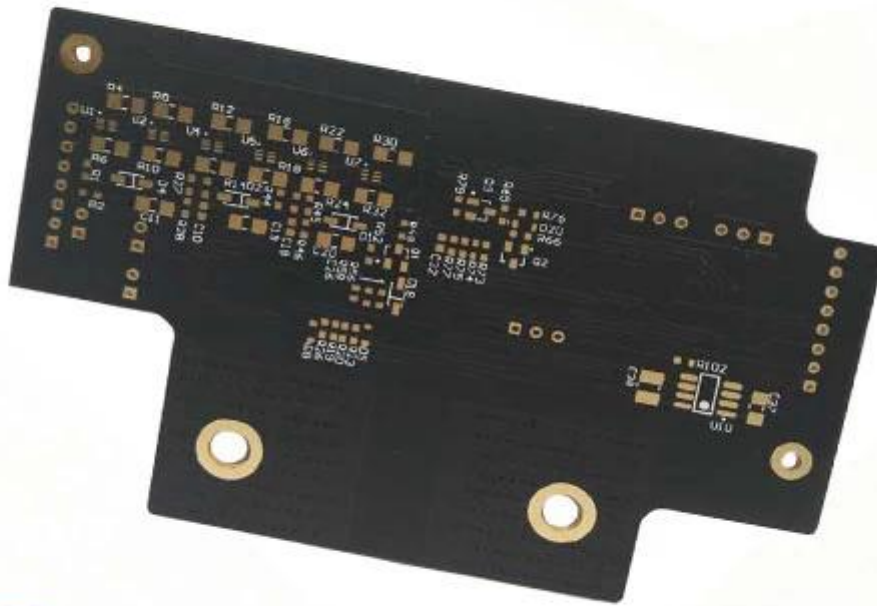
La capacité de production

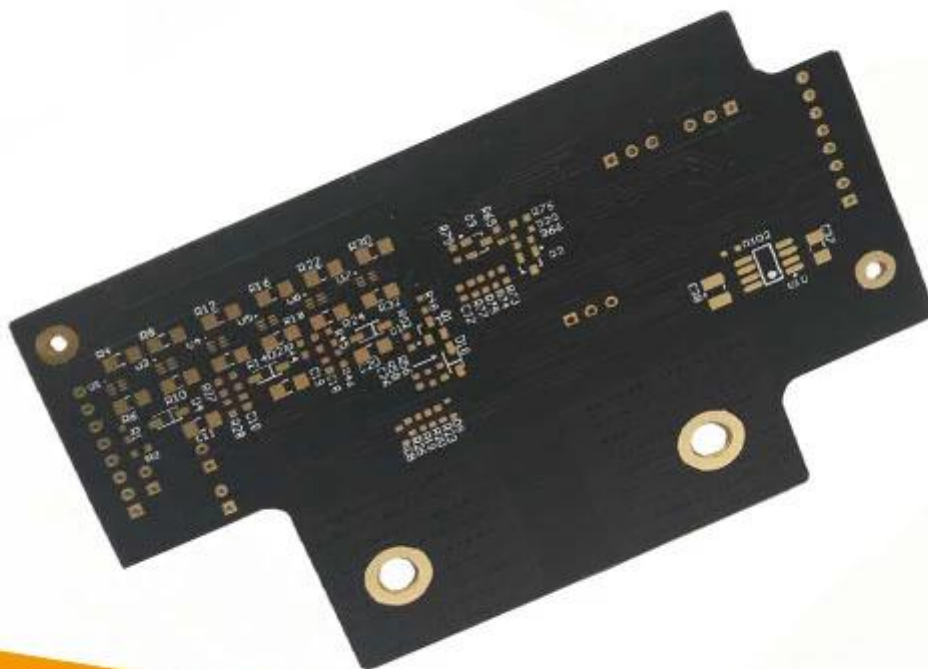
### 16 ans de fabrication professionnelle de circuits imprimés OEM

article	2014		2015 ~ 2016		2017 ~ 2018	
	Le volume	Échantillon	Le volume	Échantillon	Le volume	Échantillon
Nombre de couches	32	42	38	44	42	48
Ligne min / espace (µm)	50/50	40/45	40/45	40/40	35/40	35/35
Trou de forage minimum diamètre (mm)	0,15	0,10	0,15	0,10	0,15	0,10
Ratio d'aspect de PTH	14: 1	16: 1	16: 1	18: 1	18: 1	20: 1
N + C + N	4 + C + 4	5 + C + 5	5 + C + 5	6 + C + 6	5 + C + 5	6 + C + 6
Interconnexion de n'importe quelle couche	5 + 2 + 5	6 + 2 + 6	5 + 2 + 5	6 + 2 + 6	5 + 2 + 5	6 + 2 + 6
Remplissage de plaque via	OUI	-	OUI	-	OUI	-
Min. épaisseur du noyau (à l'exclusion du cuivre) (µm)	50	40	40	30	40	30
Min. Diamètre de perçage laser (µm)	75	65	65	50	50	40
Via sur enterré trou / empilé via	OUI	-	OUI	-	OUI	-
Matériel	FR4, Megtron, Nelco, Rogers, Heavy Copper, etc.					

PCB de condensateur intégré	OUI	-	OUI	-	OUI	-
Processus de surface	HASL sans plomb, ENIG, OSP, Argent d'immersion, Étain d'immersion, Or flash, plaqué or, plaqué or dur sélectif, Masque de soudure pelable, encre carbone					







[www.o-leading.com](http://www.o-leading.com)

[Carte de circuit imprimé HDI pcb](#)

Notre équipe



Factory PCB



Automatic vacuum press machine



Drilling Machine



Pattern Plating Machine



Scrubbing Machine



Developing Machine



Routing Machine



High-speed flying probe machine



E-test Machine

Factory SMT



# Certifications

CICC INSPECTION CERTIFICATION



**嘉泰认证**

**QUALITY MANAGEMENT SYSTEM CERTIFICATE**

Certificate No: 18118Q10347R05

**We hereby certify that**  
**O-LEADING SUPPLY CHAIN(HK) CO.,LIMITED**  
 Credit No: 61691591-000-07-18-7  
 Registration Add: FLAT/RM 1205 12/F TAI SANG BANK BUILDING 130-132 DES VODEUS ROAD CENTRAL HK  
 Business Add: 1213, Floor 13, Fortune Building, Danshui Town, Huiyang District, Huizhou, Guangdong, China

Has implemented and maintains a **Quality Management System** Which fulfills the requirements of the following standards  
 GB/T19001-2016 idt ISO9001:2015

**Scope of certification**  
 Sales of printed circuit boards

Initial issuance period: February 27, 2018  
 Renewal date: April 22, 2019  
 This certificate is valid during: April 22, 2019 – February 26, 2021  
 This certificate is invalid without CICC qualified label in the following period

First supervision and audit	Second supervision and audit	Qualified mark
-----------------------------	------------------------------	----------------

The certification registration number does not include those production stages which fail to be covered by the relevant effective administrative procedures and qualification procedures mentioned in the scope. The effectiveness of this certificate shall be restricted to actual certification scope of CICC. The certificate shall be valid when used together with the qualified mark issued.

The initial issuance of this certification can be searched on the portal of CICC [www.cicc.com.cn](http://www.cicc.com.cn) by the code of inquiry [www.cicc.com.cn](http://www.cicc.com.cn).






CICC INSPECTION CERTIFICATION



**嘉泰认证**

**质量管理体系认证证书**

证书号: 18118Q10347R05

**兹证明**  
**诚领供应链(香港)有限公司**  
 统一社会信用代码: 61691591-000-07-18-7  
 注册地址: 香港中環德輔道中130-132號大生銀行大廈1205室  
 经营地址: 广东惠州惠阳淡水南亨西路财富大厦13楼1313

**建立的质量管理体系符合**  
 GB/T19001-2016 idt ISO9001:2015 质量标准适用条款的要求

**认证范围**  
 印刷线路板的销售

初次获证日期: 2018年02月27日  
 换证日期: 2019年04月22日  
 证书有效期: 自2019年04月22日至2021年02月26日  
 在下列期限内, 未经CICC黏贴合格标贴, 本证书无效

第一次初审	第二次复审	黏贴处
-------	-------	-----

本证书认证范围不包括未取得有效的国家规定的行政许可、资质许可的产品/服务范围; 本证书通过CICC定期监督审核保持, 与年度《保持认证通知书》共同方为有效; 本证书信息可在国家认监委网站: [www.cca.gov.cn](http://www.cca.gov.cn) 及CICC网站 [www.cicc.com.cn](http://www.cicc.com.cn) 查询。










Test Report

No. SZXEC1900530401 Date: 30 Mar 2019 Page 1 of 6

O-LEADING SUPPLY CHAIN (HK) CO., LIMITED

1313.FLOOR 13, FORTUNE BUILDING, DANSHUI TOWN, HUIYANG DISTRICT, HUIZHOU, GUANGDONG, CHINA

The following sample(s) was/were submitted and identified on behalf of the clients as : OSP

SGS Job No. : RP19-005089 - SZ
Date of Sample Received : 22 Mar 2019
Testing Period : 22 Mar 2019 - 30 Mar 2019
Test Requested : Selected test(s) as requested by client.
Test Method : Please refer to next page(s).
Test Results : Please refer to next page(s).

Conclusion : Based on the performed tests on submitted sample(s), the results of Lead, Mercury, Cadmium, Hexavalent chromium, Polybrominated biphenyls (PBBs), Polybrominated diphenyl ethers (PBDEs) and Phthalates such as Bis(2-ethylhexyl) phthalate (DEHP), Butyl benzyl phthalate (BBP), Dibutyl phthalate (DBP), and Diisobutyl phthalate (DIBP) comply with the limits as set by RoHS Directive (EU) 2015/863 amending Annex II to Directive 2011/65/EU.

Signed for and on behalf of
SGS-CSTC Standards Technical Services Co., Ltd. Shenzhen Branch

Tina
Tina Fan
Approved Signatory



Unless otherwise agreed in writing, this document is issued by the Company subject to its General Conditions of Service printed overleaf, available on request or accessible at http://www.sgs.com/terms-and-conditions.aspx and, for electronic format documents, subject to Terms and Conditions for Electronic Documents at http://www.sgs.com/terms-and-conditions/ElectronicDocuments.aspx. Attention is drawn to the limitation of liability, indemnification and jurisdiction issues defined therein. Any holder of this document is advised that unless he/she expressly agrees to the Company's liability at the time of its intended use, the limits of the Company's liability are restricted to the extent of the Company's liability under the applicable law. This document does not constitute an offer of any financial product or service of the Company. Any disclaimer, limitation, waiver or indemnification to the contrary of the appearance of this document is unlawful and offenders may be prosecuted to the fullest extent of the law. Unless otherwise stated the results shown in this report refer only to the samples tested.

SGS (China) Co., Ltd. Shenzhen Branch (hereinafter referred to as "SGS") is a member of the SGS Group. The address of the head office of the SGS Group is: Switzerland, CH-1211 Geneva 19. Telephone: +41 (0)22 717 7161. Fax: +41 (0)22 717 7162. www.sgs.com.cn
中国·深圳·龙岗区长途汽车站430号二楼工业品检测5554楼 邮编: 518129 电话: +86-755-25208888 传真: +86-755-83106190 电子邮箱: sgs.china@sgs.com

Member of the SGS Group (SGS SA)



Test Report

No. SZXEC1900530401 Date: 30 Mar 2019 Page 2 of 6

Test Results :

Test Part Description :

Table with 3 columns: Specimen No., SGS Sample ID, Description. Row 1: SN1, SZX19-005304.001, Green"PCB"

Remarks :

- (1) 1 mg/kg = 1 ppm = 0.0001%
(2) MDL = Method Detection Limit
(3) ND = Not Detected (< MDL)
(4) "-" = Not Regulated

RoHS Directive (EU) 2015/863 amending Annex II to Directive 2011/65/EU

Test Method : With reference to IEC 62321-4:2013+A1:2017, IEC 62321-5:2013, IEC 62321-7-2:2017, IEC 62321-6:2015 and IEC 62321-8:2017, analyzed by ICP-OES, UV-Vis and GC-MS.

Table with 5 columns: Test Item(s), Limit, Unit, MDL, 0/1. Lists various substances like Cadmium, Lead, Mercury, Hexavalent Chromium, Sum of PBBs, etc. with their respective limits and detection results.



Unless otherwise agreed in writing, this document is issued by the Company subject to its General Conditions of Service printed overleaf, available on request or accessible at http://www.sgs.com/terms-and-conditions.aspx and, for electronic format documents, subject to Terms and Conditions for Electronic Documents at http://www.sgs.com/terms-and-conditions/ElectronicDocuments.aspx. Attention is drawn to the limitation of liability, indemnification and jurisdiction issues defined therein. Any holder of this document is advised that unless he/she expressly agrees to the Company's liability at the time of its intended use, the limits of the Company's liability are restricted to the extent of the Company's liability under the applicable law. This document does not constitute an offer of any financial product or service of the Company. Any disclaimer, limitation, waiver or indemnification to the contrary of the appearance of this document is unlawful and offenders may be prosecuted to the fullest extent of the law. Unless otherwise stated the results shown in this report refer only to the samples tested.

SGS (China) Co., Ltd. Shenzhen Branch (hereinafter referred to as "SGS") is a member of the SGS Group. The address of the head office of the SGS Group is: Switzerland, CH-1211 Geneva 19. Telephone: +41 (0)22 717 7161. Fax: +41 (0)22 717 7162. www.sgs.com.cn
中国·深圳·龙岗区长途汽车站430号二楼工业品检测5554楼 邮编: 518129 电话: +86-755-25208888 传真: +86-755-83106190 电子邮箱: sgs.china@sgs.com

Member of the SGS Group (SGS SA)



# ZPMV2.E490354 - WIRING, PRINTED - COMPONENT

## Wiring, Printed - Component

See General Information for Wiring, Printed - Component

**O-LEADING SUPPLY CHAIN (HK) CO LTD**  
 ROOM 1205, 12/F  
 TAI SANG BANK BLDG  
 130-132 DES VOEUS ROAD  
 CENTRAL, HONG KONG

E490354

Type	Cond Width		Cond Thk	SS/ DS/ DSO	Max Area Diam	Max Solder Limits		Max Oper Temp		Meets UL796	C
	Min	Edge				C	sec	C	Class		
	mm(in)	mm(in)	mic(mil)		mm(in)	C	sec	C	Class	DSR	I
<b>Multilayer (mass laminate) printed wiring boards.</b>											
<b>O-LEADING-401</b>	0.1 (0.004)	0.3 (0.012)	34 (1.34)	DS	12.7 (0.5)	260	10	130	V-0	-	-
<b>O-LEADING-407</b>	0.08 (0.003)	0.2 (0.008)	17 (0.67)	DS	9.7 (0.4)	260	10	130	V-0	All	-
<b>Multilayer printed wiring boards.</b>											
<b>O-LEADING-408</b>	0.125 (0.005)	0.125 (0.005)	12 (0.47) Int:136	DS	50.8 (2.0)	280	20	130	V-0	All	*
<b>Single layer printed wiring boards.</b>											
<b>O-LEADING-002</b>	0.38 (0.015)	1.14 (0.045)	34 (1.34)	SS	19.1 (0.8)	260	10	105	V-0	All	-
<b>O-LEADING-003</b>	0.38 (0.015)	1.14 (0.045)	34 (1.34)	SS	19.1 (0.8)	260	10	130	V-0	▲	-
<b>O-LEADING-033</b>	0.15 (0.006)	0.3 (0.012)	34 (1.34)	SS	25.4 (1.0)	260	10	120	V-0	All	-
<b>O-LEADING-205</b>	0.1 (0.004)	0.3 (0.012)	34 (1.34)	DS	69.6 (2.7)	260	10	130	V-0	All	-
<b>O-LEADING-206</b>	0.15 (0.006)	0.33 (0.013)	17 (0.67)	DS	69.6 (2.7)	260	10	130	V-0	All	-
<b>O-LEADING-D01</b>	0.14 (0.006)	0.15 (0.006)	33 (1.30)	DS	25.4 (1.0)	260	10	130	V-0	All	*
<b>O-LEADING-S01</b>	0.25 (0.010)	0.25 (0.010)	17 (0.67)	SS	25.4 (1.0)	260	4	130	V-0	All	*

WIRING, PRINTED - COMPONENT | UL Product iQ

<b>O-LEADING-S02</b>	0.2 (0.008)	0.2 (0.008)	17 (0.67)	SS	25.4 (1.0)	260	4	130	HB	▲	*
<b>O-LEADING-S03</b>	0.25 (0.010)	0.25 (0.010)	34 (1.34)	SS	25.4 (1.0)	260	4	130	V-0	All	*

\* - CTI marking is optional and may be marked on the printed wiring board.

Marking: Company name or file number and type designation. May be followed by a suffix to denote factory identification or burning test classification.

并不是所有出现在本数据库中的公司名称和产品都满足了UL跟踪检验服务的要求。只有带有UL标志的产品，才应该被视为经过UL认证，并满足UL跟踪检验服务的要求。注意查看产品上的标志。

UL 允许在线认证目录中所含材料的复制遵循以下条件：1.指南信息、装配、构造、设计、系统和/或认证（文件）必须在不篡改任何数据（或图纸）的情况下完整且无误导性地呈现。2.经UL允许从在线认证目录转载“声明必须出现在所提取材料的邻近位置。此外，转载材料必须包含以下格式的版权声明：“© 2019 UL LLC”

## Shipping service



Quick Turn Lead Time		
Layer Count:	Lead Tim	Special Requirement
1L/2L	2-3days	24 Hours,48 Hours
4L	3-4days	48 Hours
6L	4-5days	72 Hours
8L	5-6days	NA
10L	6-7days	NA
12L	7-8days	NA
14L	8-9days	NA

Standard Lead Time		
Layer Count:	Sample Lead Time	Volume order lead time
2L	4 days	10 days
4L	5 days	11 days
6L	6 days	12 days
8L	8 days	14 days
10L	10 days	16 days
12L	12 days	18 days
14L	14 days	20 days
16-32L	18 days	24 days

## Capacité du processus

### Capacités de production de PCB

Nombre de couches: 1 couche-32 couches

Épaisseur de cuivre fini: 1 / 3oz-12oz

Largeur / espacement des lignes min. Interne: 3.0mil / 3.0mil

Largeur / espacement des lignes min externes: 4.0mil / 4.0mil

Rapport d'aspect max: 10: 1

Épaisseur du panneau: 0,2 mm à 5,0 mm

Taille maximale du panneau (pouces): 635 \* 1500 mm

Taille minimale du trou percé: 4mil

Tolérance de trou Plated: +/- 3mil

Blind / Buried Vias (types All): OUI

Via remplissage (conducteur, non conducteur): OUI

Matériau de base: FR-4, FR-4High Tg.Halogen free material, Rogers, Aluminium base,Polyimide,

Cuivre lourd

Finitions de surface: HASL, OSP, ENIG, HAL-LF, Immersion silver,Étain d'immersion, doigts d'or, encre de carbone

## **Capacités de production SMT**

Matériau PCB: FR-4, CEM-1, CEM-3, carte à base d'aluminium

Taille maximale du PCB: 510x460mm

Taille minimale du PCB: 50x50mm

Épaisseur du PCB: 0,5 mm à 4,5 mm

Épaisseur du panneau: 0,5-4 mm

Taille minimale des composants: 0201

Composant de taille de puce standard: 0603 et plus

Hauteur maximale des composants: 15 mm

Pas de plomb mini: 0,3 mm

Pas de balle BGA minimum: 0,4 mm

Précision de placement: +/- 0,03 mm