

Bienvenido a O-lider

O-líder se esfuerza por ser su socio de solución de stop en la cadena de suministro de EMS, incluido el diseño de PCB, la fabricación de PCB y el ensamblaje de PCB (PCBA). Ofrecemos algunas de las tocadoras PCB más avanzadas, incluidas PCBs HDI, PCB de múltiples capas, PCBs rígidos y flexibles . Podemos respaldar desde un prototipo de giro rápido hasta la producción media y masiva.

En general, nuestros clientes globales están muy impresionados con nuestros servicios: respuesta rápida, precio competitivo y compromiso de calidad. Probar el servicio técnico más valioso y la solución general es la forma en que conduce hacia adelante.

Mirando hacia el futuro, la O-líder se concentrará en la innovación y el desarrollo de la tecnología de fabricación de electrónica como siempre, y realizará esfuerzos persistentes en el servicio One-STOP de PCB y PCBA para proporcionar servicios de primera clase y crear más valor para nuestros clientes. [PCB de doble cara en China](#)

Somos fabricantes profesionales de PCB con más de diez años de experiencia. Productos Range-Single, doble lado, PCB de múltiples capas, PCB flexible y MCPCB. Podemos proporcionar un servicio de prototipo rápido en 24 horas, 4-8 laptales en 48-96 horas de producción de HRS.

Los orificios de la placa de cobre Mínimo .025 AVG, .020 min .. Los agujeros pueden no estar conectados

Paquete con una película de burbujas transparente incolora, 25 piezas / bolsa, coloque desecante en flanco, coloque la tarjeta indicadora de humedad en el lado superior

Descripción del producto

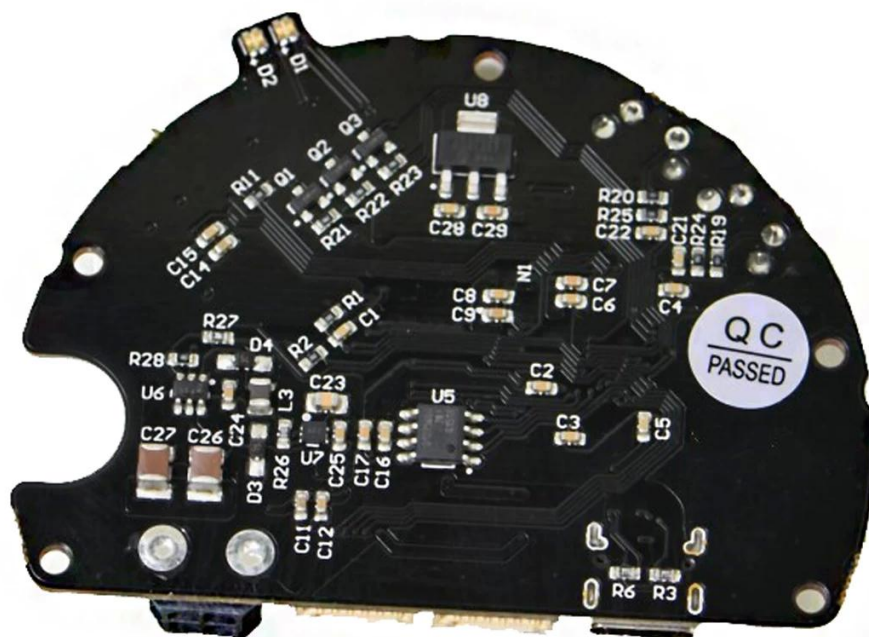
Detalles Rápidos

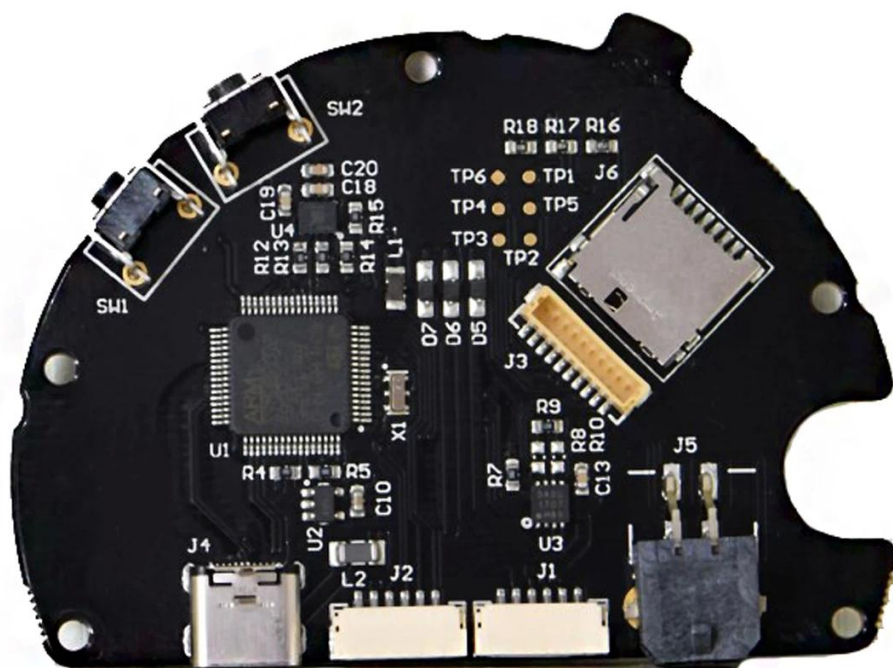
Lugar de origen	Guangdong China (continental)	Nombre de la marca	O-lider
Material de base	FR-4,, Aluminio	Espesor de cobre	0.5oz-5oz
Min. Tamaño del agujero	0.2mm	Min. Grosor de línea	0.2mm
Acabado de superficies	Inmersión de oro, OSP, liderazgo libre.	Espesor del tablero	0.1-5mm
aplicable a	LED, Teléfono Móvil, Aire Acondicionado, Lavadoras	personaje	PCB de control industrial
certificados	ISO9001, UL, RoHS, SGS	Q / CTN:	10pcs-100pcs
peso	0.01kg -5kg	MOQ:	10pcs
color	azul, rojo, verde, negro.	Min. Espaciado entre líneas	0.2mm
Número de modelo	Fabricante de PCB de PWB Bank Power Bank	precio	\$ 0.1- \$ 10
tipo de despido	requisito del cliente	Talla	0.01m3-10m3

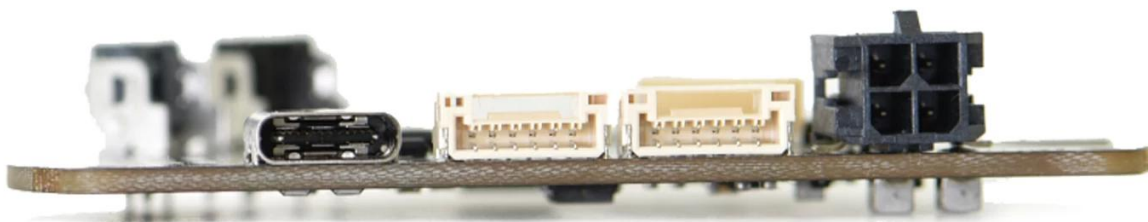
Capacidad de producción

16 años profesional OEM PCB Tablero Fabricación

Artículo	2014		2015 ~ 2016		2017 ~ 2018	
	Volumen	Muestra	Volumen	Muestra	Volumen	Muestra
Recuento de capas	32	42	38	44	42	48
Min Line / Space (µm)	50/50	40/45	40/45	40/40	35/40	35/35
Agujero de taladro min diámetro (mm)	0.15	0.10	0.15	0.10	0.15	0.10
Relación de aspecto de pth	14: 1	16: 1	16: 1	18: 1	18: 1	20: 1
N + c + n	4 + C + 4	5 + C + 5	5 + C + 5	6 + C + 6	5 + C + 5	6 + C + 6
Cualquier interconexión de capa	5 + 2 + 5	6 + 2 + 6	5 + 2 + 5	6 + 2 + 6	5 + 2 + 5	6 + 2 + 6
Llenado de placa a través de	SÍ	-	SÍ	-	SÍ	-
Min. Espesor del núcleo (excluir el cobre) (µm)	50	40	40	30	40	30
Min. Diámetro del taladro láser (µm)	75	sesenta y cinco	sesenta y cinco	50	50	40
A través de enterrado Agujero / apilado a través de	SÍ	-	SÍ	-	SÍ	-
Material	FR4, Megtron, Nelco, Rogers, cobre pesado, etc.					
Capacitador incrustado PCB	SÍ	-	SÍ	-	SÍ	-
Proceso de superficie	Hasl, enig, OSP, plata, plata, estaño de inmersión, sin plomo. Flash Gold, Gold Finger Plating, Chapado de oro duro selectivo, Máscara de soldadura peelable, tinta de carbono					







www.o-leading.com

Placa de circuito impreso Supplier

Nuestro equipo



Factory PCB



Automatic vacuum press machine



Drilling Machine



Pattern Plating Machine



Scrubbing Machine



Developing Machine



Routing Machine



High-speed flying probe machine



E-test Machine

Factory SMT



Certificaciones

CICC INSPECTION CERTIFICATION



嘉泰认证

QUALITY MANAGEMENT SYSTEM CERTIFICATE

Certificate No: 18118Q10347R05

We hereby certify that
O-LEADING SUPPLY CHAIN(HK) CO.,LIMITED
 Credit No: 61691591-000-07-18-7
 Registration Add: FLAT/RM 1205 12/F TAI SANG BANK BUILDING 130-132 DES VODEUS ROAD CENTRAL HK
 Business Add: 1213, Floor 13, Fortune Building, Danshui Town, Huiyang District, Huizhou, Guangdong, China

Has implemented and maintains a **Quality Management System** Which fulfills the requirements of the following standards
 GB/T19001-2016 idt ISO9001:2015

Scope of certification
 Sales of printed circuit boards

Initial issuance period: February 27, 2018
 Renewal date: April 22, 2019
 This certificate is valid during: April 22, 2019 – February 26, 2021
 This certificate is invalid without CICC qualified label in the following period

First supervision and audit	Second supervision and audit	Qualified mark
-----------------------------	------------------------------	----------------

The certification registration number does not include those production stages which fail to be covered by the relevant effective administrative procedures and qualification procedures stipulated by the state. The effectiveness of this certificate shall be restricted to those activities which are covered by the certification. The actual information of this certification can be searched on the internet of CICC www.cicc.com.cn by the site of internet www.cicc.com.cn.






CICC INSPECTION CERTIFICATION



嘉泰认证

质量管理体系认证证书

证书号: 18118Q10347R05

兹证明
诚领供应链(香港)有限公司
 统一社会信用代码: 61691591-000-07-18-7
 注册地址: 香港中環德輔道中130-132號大生銀行大廈1205室
 经营地址: 广东惠州惠阳淡水南亨西路财富大厦13楼1313

建立的质量管理体系符合
 GB/T19001-2016 idt ISO9001:2015 质量标准适用条款的要求

认证范围
 印刷线路板的销售

初次获证日期: 2018年02月27日
 换证日期: 2019年04月22日
 证书有效期: 自2019年04月22日至2021年02月26日
 在下列期限内, 未经CICC黏贴合格标贴, 本证书无效

第一次监督	第二次监督	黏贴处
-------	-------	-----

本证书认证范围不包括未取得有效的国家规定的行政许可、资质许可的产品/服务范围; 本证书通过CICC定期监督审核保持, 与年度《保持认证通知书》共同方为有效; 本证书信息可在国家认监委网站: www.cca.gov.cn及CICC网站www.cicc.com.cn查询。








Test Report

No. SZXEC1900530401 Date: 30 Mar 2019 Page 1 of 6

O-LEADING SUPPLY CHAIN (HK) CO., LIMITED

1313.FLOOR 13, FORTUNE BUILDING, DANSHUI TOWN, HUIYANG DISTRICT, HUIZHOU, GUANGDONG, CHINA

The following sample(s) was/were submitted and identified on behalf of the clients as : OSP

SGS Job No. : RP19-005089 - SZ
Date of Sample Received : 22 Mar 2019
Testing Period : 22 Mar 2019 - 30 Mar 2019
Test Requested : Selected test(s) as requested by client.
Test Method : Please refer to next page(s).
Test Results : Please refer to next page(s).

Conclusion : Based on the performed tests on submitted sample(s), the results of Lead, Mercury, Cadmium, Hexavalent chromium, Polybrominated biphenyls (PBBs), Polybrominated diphenyl ethers (PBDEs) and Phthalates such as Bis(2-ethylhexyl) phthalate (DEHP) , Butyl benzyl phthalate (BBP), Dibutyl phthalate (DBP) , and Diisobutyl phthalate (DIBP) comply with the limits as set by RoHS Directive (EU) 2015/863 amending Annex II to Directive 2011/65/EU.

Signed for and on behalf of
SGS-CSTC Standards Technical Services Co., Ltd. Shenzhen Branch

Tina
Tina Fan
Approved Signatory



Unless otherwise agreed in writing, this document is issued by the Company subject to its General Conditions of Service printed overleaf, available on request or accessible at http://www.sgs.com/terms-and-conditions.aspx and, for electronic format documents, subject to Terms and Conditions for Electronic Documents at http://www.sgs.com/terms-and-conditions/Electronic-Document.aspx. Attention is drawn to the limitation of liability, indemnification and jurisdiction issues defined therein. Any holder of this document is advised that unless he/she expressly agrees to the Company's liability at the time of its intended use, the limits of the Company's liability are restricted to the extent of the Company's liability under the applicable law. This document does not constitute an offer of any financial product or service. The Company's liability is limited to the extent of the Company's liability under the applicable law. The appearance of this document is unlawful and offenders may be prosecuted to the fullest extent of the law. Unless otherwise stated the results shown in this report refer only to the samples tested.

Member of the SGS Group (SGS SA)



Test Report

No. SZXEC1900530401 Date: 30 Mar 2019 Page 2 of 6

Test Results :

Test Part Description :

Table with 3 columns: Specimen No., SGS Sample ID, Description. Row 1: SN1, SZX19-005304.001, Green"PCB"

Remarks :

- (1) 1 mg/kg = 1 ppm = 0.0001%
(2) MDL = Method Detection Limit
(3) ND = Not Detected (< MDL)
(4) "-" = Not Regulated

RoHS Directive (EU) 2015/863 amending Annex II to Directive 2011/65/EU

Test Method : With reference to IEC 62321-4:2013+A1:2017, IEC 62321-5:2013, IEC 62321-7-2:2017, IEC 62321-6:2015 and IEC 62321-8:2017, analyzed by ICP-OES, UV-Vis and GC-MS.

Table with 5 columns: Test Item(s), Limit, Unit, MDL, 0/1. Lists various substances like Cadmium, Lead, Mercury, Hexavalent Chromium, Sum of PBBs, etc. with their respective limits and detection results.



Unless otherwise agreed in writing, this document is issued by the Company subject to its General Conditions of Service printed overleaf, available on request or accessible at http://www.sgs.com/terms-and-conditions.aspx and, for electronic format documents, subject to Terms and Conditions for Electronic Documents at http://www.sgs.com/terms-and-conditions/Electronic-Document.aspx. Attention is drawn to the limitation of liability, indemnification and jurisdiction issues defined therein. Any holder of this document is advised that unless he/she expressly agrees to the Company's liability at the time of its intended use, the limits of the Company's liability are restricted to the extent of the Company's liability under the applicable law. This document does not constitute an offer of any financial product or service. The Company's liability is limited to the extent of the Company's liability under the applicable law. The appearance of this document is unlawful and offenders may be prosecuted to the fullest extent of the law. Unless otherwise stated the results shown in this report refer only to the samples tested.

Member of the SGS Group (SGS SA)



ZPMV2.E490354 - WIRING, PRINTED - COMPONENT

Wiring, Printed - Component

See General Information for Wiring, Printed - Component

O-LEADING SUPPLY CHAIN (HK) CO LTD
 ROOM 1205, 12/F
 TAI SANG BANK BLDG
 130-132 DES VOEUS ROAD
 CENTRAL, HONG KONG

E490354

Type	Cond Width		Cond Thk	SS/ DS/ DSO	Max	Max		Meets	C		
	Min	Edge			Area	Solder	Oper			Flame	
	mm(in)	mm(in)	mic(mil)		Diam	Limits	Temp	Class	UL796	T	
Multilayer (mass laminate) printed wiring boards.											
O-LEADING-401	0.1 (0.004)	0.3 (0.012)	34 (1.34)	DS	12.7 (0.5)	260	10	130	V-0	-	
O-LEADING-407	0.08 (0.003)	0.2 (0.008)	17 (0.67)	DS	9.7 (0.4)	260	10	130	V-0	All	
Multilayer printed wiring boards.											
O-LEADING-408	0.125 (0.005)	0.125 (0.005)	12 (0.47) Int:136	DS	50.8 (2.0)	280	20	130	V-0	All	*
Single layer printed wiring boards.											
O-LEADING-002	0.38 (0.015)	1.14 (0.045)	34 (1.34)	SS	19.1 (0.8)	260	10	105	V-0	All	-
O-LEADING-003	0.38 (0.015)	1.14 (0.045)	34 (1.34)	SS	19.1 (0.8)	260	10	130	V-0	▲	-
O-LEADING-033	0.15 (0.006)	0.3 (0.012)	34 (1.34)	SS	25.4 (1.0)	260	10	120	V-0	All	-
O-LEADING-205	0.1 (0.004)	0.3 (0.012)	34 (1.34)	DS	69.6 (2.7)	260	10	130	V-0	All	-
O-LEADING-206	0.15 (0.006)	0.33 (0.013)	17 (0.67)	DS	69.6 (2.7)	260	10	130	V-0	All	-
O-LEADING-D01	0.14 (0.006)	0.15 (0.006)	33 (1.30)	DS	25.4 (1.0)	260	10	130	V-0	All	*
O-LEADING-S01	0.25 (0.010)	0.25 (0.010)	17 (0.67)	SS	25.4 (1.0)	260	4	130	V-0	All	*

WIRING, PRINTED - COMPONENT | UL Product iQ

O-LEADING-S02	0.2 (0.008)	0.2 (0.008)	17 (0.67)	SS	25.4 (1.0)	260	4	130	HB	▲	*
O-LEADING-S03	0.25 (0.010)	0.25 (0.010)	34 (1.34)	SS	25.4 (1.0)	260	4	130	V-0	All	*

* - CTI marking is optional and may be marked on the printed wiring board.

Marking: Company name or file number and type designation. May be followed by a suffix to denote factory identification or burning test classification.

并不是所有出现在本数据库中的公司名称和产品都满足了UL跟踪检验服务的要求。只有带有UL标志的产品，才应该被视为经过UL认证，并满足UL跟踪检验服务的要求。注意查看产品上的标志。

UL 允许在线认证目录中所含材料的复制遵循以下条件：1.指南信息、装配、构造、设计、系统和/或认证（文件）必须在不篡改任何数据（或图纸）的情况下完整且无误导性地呈现。2.经 UL 允许从在线认证目录转载“声明必须出现在所提取材料的邻近位置。此外，转载材料必须包含以下格式的版权声明：“© 2019 UL LLC”

Shipping service



Quick Turn Lead Time		
Layer Count:	Lead Tim	Special Requirement
1L/2L	2-3days	24 Hours,48 Hours
4L	3-4days	48 Hours
6L	4-5days	72 Hours
8L	5-6days	NA
10L	6-7days	NA
12L	7-8days	NA
14L	8-9days	NA

Standard Lead Time		
Layer Count:	Sample Lead Time	Volume order lead time
2L	4 days	10 days
4L	5 days	11 days
6L	6 days	12 days
8L	8 days	14 days
10L	10 days	16 days
12L	12 days	18 days
14L	14 days	20 days
16-32L	18 days	24 days

Capacidad de procesamiento

Capacidades de producción de PCB

Cuenta de capa: 1layer-32layer

Espesor terminado de cobre: 1 / 3oz-12oz

Ancho de línea MIN / espaciado interno: 3.0mil / 3.0mil

Ancho de línea Min / espaciado externo: 4.0mil / 4.0mil

Relación máxima de aspecto: 10: 1

Espesor del tablero: 0.2mm-5.0mm

Tamaño máximo del panel (pulgadas): 635 * 1500mm

Tamaño mínimo de agujero perforado: 4mil

Tolerancia al agujero de patiada: +/- 3mil

BIIND / VIES enterrados (tipos All): Sí

A través del relleno (conductor, no conductor): si

Material base: FR-4, FR-4 TG. Material libre de halógeno, Rogers, Base de aluminio,Poliimida,

Cobre pesado

Acabados de superficie: Hasl, OSP, ENIG, HAL-LF, LMMersion Silver,Immersion let, dedos de oro, tinta de carbono

Capacidades de producción SMT

Material PCB: FR-4, CEM-1, CEM-3, tabla a base de aluminio

Tamaño máximo PCB: 510x460mm

Min PCB Tamaño: 50x50mm

Espesor PCB: 0.5mm-4.5mm

Espesor del tablero: 0.5-4mm

Min componentes Tamaño: 0201

Componente de tamaño estándar de chip: 0603 y más grande

Componente MAX Altura: 15mm

Pitch de plomo mínimo: 0.3mm

Min BGA Ball Pitch: 0.4mm

Precisión de colocación: +/- 0.03mm