

# Vítejte v O-vedoucím

O-vedoucí se snaží být vaším jedním stopovým řešením partnerem v dodavatelském řetězci EMS, včetně designu desky PCB, výroby desek PCB a sestavy PCB (PCBA). Zajišťujeme některé z nejmodernějších technologií PCB, včetně HDI PCB, vícevrstvých PCB, pevných plošných spojů . MŮŽE PODPORU Z RYCHLOSTNÍHO PROSTŘEDÍ PROTOTYPE DO STŘEDNÍHO PRODUKCE.

Obecně platí, že naše globální zákazníci jsou velmi ohromeni našimi službami: rychlá reakce, konkurenceschopná cena a kvalitní angažovanost.

Při pohledu do budoucnosti se o-vedou bude soustředit na inovace a vývoj technologie výroby elektroniky jako vždy, a učinit přetrvávající úsilí na službu PCB & PCBA jednorázová služba poskytovat prvotřídní služby a vytvořit více hodnot pro naše zákazníky. [PCB sestava výrobce Čína](#)

## Popis výrobku

### Rychlé detaily

PCB P / N	CD539.
Počet vrstev	2.L.
Materiál	FR-4 TG130
Deska thk.	0,8 mm.
měděný thk.	2 / 2Z.
Nejmenší velikost díry	0,5 mm
Počet otvorů (PC)	477.
linka w / s	12 / 12mil.
Kontrola impedance. Y / n (tol%)	N.
Povrchový povrchG	Hasl-lf.
Pájecí maska Silkscreen.	Bílá / n / a
Velikost jedné desky	DIM X (mm): 301; DIM Y (mm): 75.8
Panelisation	Dim X (mm): 320; DIM Y (mm): 240; Ne UPS: 3
Speciální: Odlupovatelná maska	N.
Směrování / děrování	CNC.

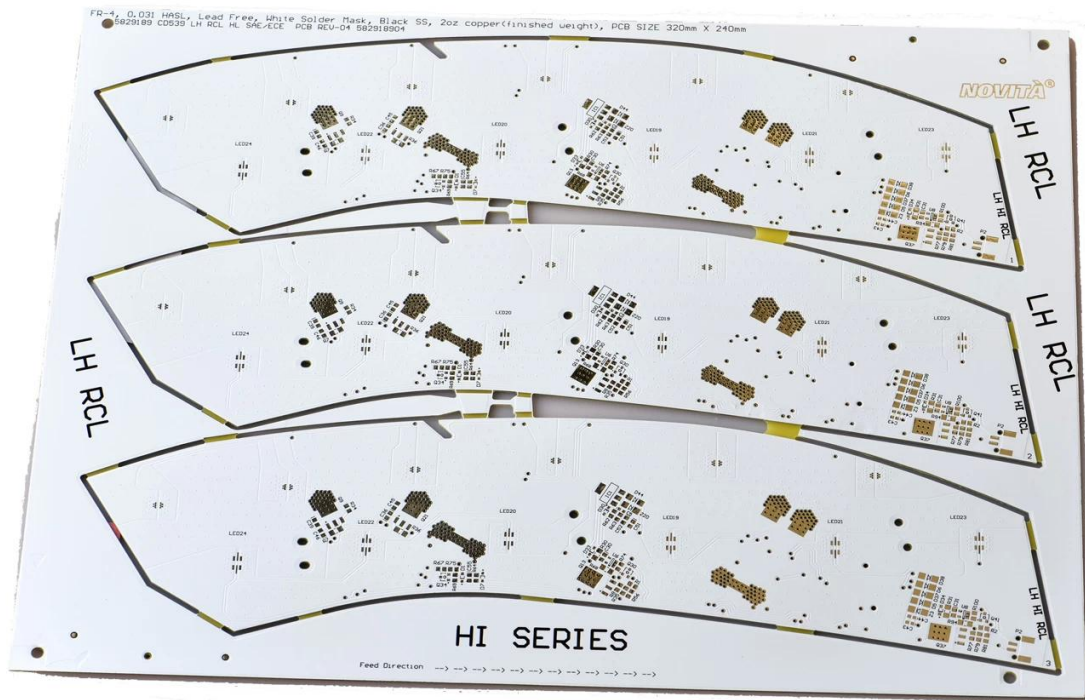
### Výrobní schopnost

16 let Profesionální OEM PCB Deska Výroba ([PCB rozložení výrobce Čína](#))

položka	2014.		2015 ~ 2016.		2017 ~ 2018.	
	Objem	Vzorek	Objem	Vzorek	Objem	Vzorek
Počet vrstev	32.	42.	38.	44.	42.	48.
Minimální linka / prostor (µm)	50/50.	40/45.	40/45.	40/40.	35/40.	35/35.
MIN DRILL DIGHT HOOR (mm)	0.15.	0.10.	0.15.	0.10.	0.15.	0.10.
Poměr stran PTH	14: 1.	16: 1.	16: 1.	18: 1.	18: 1.	20: 1.

N + c + n	4 + C + 4	5 + C + 5	5 + C + 5	6 + C + 6	5 + C + 5	6 + C + 6
Všechny propojení vrstev	5 + 2 + 5	6 + 2 + 6	5 + 2 + 5	6 + 2 + 6	5 + 2 + 5	6 + 2 + 6
Plnění desky přes.	ANO	-	ANO	-	ANO	-
Min. Tloušťka jádra (vyloučení mědi) (µm)	50.	40.	40.	30.	40.	30.
Min. Průměr laserového vrtáku (µm)	75.	65.	65.	50.	50.	40.
Přes na pohřbené díře / skládaný přes	ANO	-	ANO	-	ANO	-
Materiál	FR4, Megtron, Nelco, Rogers, těžká měď, atd.					
Vložený kondenzátor PCB.	ANO	-	ANO	-	ANO	-
Povrchový proces	Bez olovnatého hasl, Enig, OSP, ponořovací stříbro, ponorný cín, flash zlato, zlatý prst pokovování, selektivní tvrdé zlato pokovování, odlupovací pájecí maska, uhlíkový inkoust					

**O-LEADING**  
To Be Reliable, To Be Valuable



[www.o-leading.com](http://www.o-leading.com)

**Mobilní telefon Dodavatel PCB Čína**

# Náš tým



---

Factory PCB

---



Automatic vacuum press machine



Drilling Machine



Pattern Plating Machine



Scrubbing Machine



Developing Machine



Routing Machine



High-speed flying probe machine



E-test Machine

---

Factory SMT

---



# Certifikace

CICC INSPECTION CERTIFICATION



**嘉泰认证**

**QUALITY MANAGEMENT SYSTEM CERTIFICATE**

Certificate No: 18118Q10347R05

**We hereby certify that**

**O-LEADING SUPPLY CHAIN(HK) CO.,LIMITED**  
 Credit No: 61691591-000-07-18-7  
 Registration Add: FLAT/RM 1205 12/F TAI SANG BANK BUILDING 130-132 DES  
 VDEUS ROAD CENTRAL HK  
 Business Add: 1313, Floor 13, Fortune Building, Danshui Town, Huiyang  
 District, Huizhou, Guangdong, China

Has implemented and maintains a **Quality Management System**  
 Which fulfils the requirements of the following standards  
**GB/T19001-2016 idt ISO9001:2015**

**Scope of certification**  
 Sales of printed circuit boards

Initial issuance period: February 27, 2018  
 Renewal date: April 22, 2019  
 This certificate is valid during: April 22, 2019 ~ February 26, 2021  
 This certificate is invalid without CICC qualified label in the following period

First supervision and audit	Second supervision and audit	Qualified mark
-----------------------------	------------------------------	----------------

The certification registration number shown in this certificate does not include those product/service ranges which shall be examined by the relevant effective administrative authorities and qualification permission required by the state. The effectiveness of this certificate shall be subjected to annual surveillance audits of CICC. The certificate shall be valid when used together with the surveillance audit certificate.  
 The initial information of this certificate can be searched on the internet of CICC. See also the link on the left side of homepage www.cicc.com.cn






CICC INSPECTION CERTIFICATION



**嘉泰认证**

**质量管理体系认证证书**

证书号: 18118Q10347R05

**兹证明**

**诚领供应链(香港)有限公司**  
 统一社会信用代码: 61691591-000-07-18-7  
 注册地址: 香港中環德輔道中 130-132 號大生銀行大廈 1205 室  
 经营地址: 广东惠州惠阳淡水南亨西路财富大厦 13 楼 1313

**建立的质量管理体系符合**  
**GB/T19001-2016 idt ISO9001:2015 质量标准适用条款的要求**

**认证范围**  
 印刷线路板的销售

初次发证日期: 2018年02月27日  
 换证日期: 2019年04月22日  
 证书有效期: 自2019年04月22日至2021年02月26日  
 在下列期限内, 未经 CICC 黏贴合格标贴, 本证书无效

第一次监审	第二次监审	贴标处
-------	-------	-----

本证书认证范围不包括未获得有效的国家规定的行政许可、资质许可的产品/服务范围。本证书通过CICC定期监督审核保持, 与年度《保持认证通知书》共同方为有效。本证书信息可在国家认监委网站: www.cma.gov.cn及CICC网站www.cicc.com.cn查询。








Test Report

No. SZXEC1900530401 Date: 30 Mar 2019 Page 1 of 6

O-LEADING SUPPLY CHAIN (HK) CO., LIMITED

1313.FLOOR 13, FORTUNE BUILDING, DANSHUI TOWN, HUIYANG DISTRICT, HUIZHOU, GUANGDONG, CHINA

The following sample(s) was/were submitted and identified on behalf of the clients as : OSP

SGS Job No. : RP19-006089 - SZ
Date of Sample Received : 22 Mar 2019
Testing Period : 22 Mar 2019 - 30 Mar 2019
Test Requested : Selected test(s) as requested by client.
Test Method : Please refer to next page(s).
Test Results : Please refer to next page(s).

Conclusion : Based on the performed tests on submitted sample(s), the results of Lead, Mercury, Cadmium, Hexavalent chromium, Polybrominated biphenyls (PBBs), Polybrominated diphenyl ethers (PBDEs) and Phthalates such as Bis(2-ethylhexyl) phthalate (DEHP), Butyl benzyl phthalate (BBP), Dibutyl phthalate (DBP), and Diisobutyl phthalate (DIBP) comply with the limits as set by RoHS Directive (EU) 2015/863 amending Annex II to Directive 2011/65/EU.

Signed for and on behalf of
SGS-CSTC Standards Technical Services Co., Ltd. Shenzhen Branch

Tina
Tina Fan
Approved Signatory



Unless otherwise agreed in writing, this document is issued by the Company subject to its General Conditions of Service printed overleaf, available on request or accessible at http://www.sgs.com/terms-and-conditions.aspx and, for electronic format documents, subject to Terms and Conditions for Electronic Documents at http://www.sgs.com/terms-and-conditions/ETED.aspx. Attention is drawn to the limitation of liability, indemnification and jurisdiction issues defined therein. Any holder of this document is advised that unless he/she expressly agrees to the Company's liability at the time of its intended use, the limits of the Company's liability are restricted to the extent of the Company's liability under the applicable law. This document does not constitute a contract. It is a transaction form exercising all their rights and obligations under the transaction documents. This document cannot be reproduced or used in any way without prior written approval of the Company. Any unauthorized alteration, forgery or falsification of the content or appearance of this document is unlawful and offenders may be prosecuted to the fullest extent of the law. Unless otherwise stated the results shown in this report refer only to the samples tested.

Member of the SGS Group (SGS SA)



Test Report

No. SZXEC1900530401 Date: 30 Mar 2019 Page 2 of 6

Test Results :

Test Part Description :

Table with 3 columns: Specimen No., SGS Sample ID, Description. Row 1: SN1, SZX19-005304.001, Green"PCB"

Remarks :

- (1) 1 mg/kg = 1 ppm = 0.0001%
(2) MDL = Method Detection Limit
(3) ND = Not Detected (< MDL)
(4) "-" = Not Regulated

RoHS Directive (EU) 2015/863 amending Annex II to Directive 2011/65/EU

Test Method : With reference to IEC 62321-4:2013+A1:2017, IEC 62321-5:2013, IEC 62321-7-2:2017, IEC 62321-6:2015 and IEC 62321-8:2017, analyzed by ICP-OES, UV-Vis and GC-MS.

Table with 5 columns: Test Item(s), Limit, Unit, MDL, 0/1. Lists various heavy metals and polybrominated biphenyls with their respective limits and detection results.



Unless otherwise agreed in writing, this document is issued by the Company subject to its General Conditions of Service printed overleaf, available on request or accessible at http://www.sgs.com/terms-and-conditions.aspx and, for electronic format documents, subject to Terms and Conditions for Electronic Documents at http://www.sgs.com/terms-and-conditions/ETED.aspx. Attention is drawn to the limitation of liability, indemnification and jurisdiction issues defined therein. Any holder of this document is advised that unless he/she expressly agrees to the Company's liability at the time of its intended use, the limits of the Company's liability are restricted to the extent of the Company's liability under the applicable law. This document does not constitute a contract. It is a transaction form exercising all their rights and obligations under the transaction documents. This document cannot be reproduced or used in any way without prior written approval of the Company. Any unauthorized alteration, forgery or falsification of the content or appearance of this document is unlawful and offenders may be prosecuted to the fullest extent of the law. Unless otherwise stated the results shown in this report refer only to the samples tested.

Member of the SGS Group (SGS SA)



## ZPMV2.E490354 - WIRING, PRINTED - COMPONENT

## Wiring, Printed - Component

See General Information for Wiring, Printed - Component

**O-LEADING SUPPLY CHAIN (HK) CO LTD**

E490354

ROOM 1205, 12/F  
TAI SANG BANK BLDG  
130-132 DES VOEUS ROAD  
CENTRAL, HONG KONG

Type	Cond Width			SS/ DS/ DSO	Max	Max			Meets UL796	C T	
	Min	Cond	Area		Solder	Flame	Class				
	Min	Edge			Thk			Oper			
mm(in)	mm(in)	mic(mil)	Diam	Limits	Temp	DSR	I				
<b>Multilayer (mass laminate) printed wiring boards.</b>											
<b>O-LEADING-401</b>	0.1 (0.004)	0.3 (0.012)	34 (1.34)	DS	12.7 (0.5)	260	10	130	V-0	-	-
<b>O-LEADING-407</b>	0.08 (0.003)	0.2 (0.008)	17 (0.67)	DS	9.7 (0.4)	260	10	130	V-0	All	-
<b>Multilayer printed wiring boards.</b>											
<b>O-LEADING-408</b>	0.125 (0.005)	0.125 (0.005)	12 (0.47) Int:136	DS	50.8 (2.0)	280	20	130	V-0	All	*
<b>Single layer printed wiring boards.</b>											
<b>O-LEADING-002</b>	0.38 (0.015)	1.14 (0.045)	34 (1.34)	SS	19.1 (0.8)	260	10	105	V-0	All	-
<b>O-LEADING-003</b>	0.38 (0.015)	1.14 (0.045)	34 (1.34)	SS	19.1 (0.8)	260	10	130	V-0	▲	-
<b>O-LEADING-033</b>	0.15 (0.006)	0.3 (0.012)	34 (1.34)	SS	25.4 (1.0)	260	10	120	V-0	All	-
<b>O-LEADING-205</b>	0.1 (0.004)	0.3 (0.012)	34 (1.34)	DS	69.6 (2.7)	260	10	130	V-0	All	-
<b>O-LEADING-206</b>	0.15 (0.006)	0.33 (0.013)	17 (0.67)	DS	69.6 (2.7)	260	10	130	V-0	All	-
<b>O-LEADING-D01</b>	0.14 (0.006)	0.15 (0.006)	33 (1.30)	DS	25.4 (1.0)	260	10	130	V-0	All	*
<b>O-LEADING-S01</b>	0.25 (0.010)	0.25 (0.010)	17 (0.67)	SS	25.4 (1.0)	260	4	130	V-0	All	*

## WIRING, PRINTED - COMPONENT | UL Product iQ

<b>O-LEADING-S02</b>	0.2 (0.008)	0.2 (0.008)	17 (0.67)	SS	25.4 (1.0)	260	4	130	HB	▲	*
<b>O-LEADING-S03</b>	0.25 (0.010)	0.25 (0.010)	34 (1.34)	SS	25.4 (1.0)	260	4	130	V-0	All	*

\* - CTI marking is optional and may be marked on the printed wiring board.

Marking: Company name or file number and type designation. May be followed by a suffix to denote factory identification or burning test classification.

并不是所有出现在本数据库中的公司名称和产品都满足了UL跟踪检验服务的要求。只有带有UL标志的产品，才应该被视为经过UL认证，并满足UL跟踪检验服务的要求。注意查看产品上的标志。

UL 允许在线认证目录中所含材料的复制遵循以下条件：1.指南信息、装配、构造、设计、系统和/或认证（文件）必须在不篡改任何数据（或图纸）的情况下完整且无误导性地呈现。2.经UL允许从在线认证目录转载“声明必须出现在所摘录材料的邻近位置。此外，转载材料必须包含以下格式的版权声明：“© 2019 UL LLC”

# Balení a doručení

## Shipping service





Quick Turn Lead Time		
Layer Count:	Lead Tim	Special Requirement
1L/2L	2-3days	24 Hours,48 Hours
4L	3-4days	48 Hours
6L	4-5days	72 Hours
8L	5-6days	NA
10L	6-7days	NA
12L	7-8days	NA
14L	8-9days	NA

Standard Lead Time		
Layer Count:	Sample Lead Time	Volume order lead time
2L	4 days	10 days
4L	5 days	11 days
6L	6 days	12 days
8L	8 days	14 days
10L	10 days	16 days
12L	12 days	18 days
14L	14 days	20 days
16-32L	18 days	24 days

## Procesní schopnost

### Výrobní schopnosti PCB.

Počet vrstev: 1ALER-32LAYER

Dokončená tloušťka mědi: 1 / 3OZ-12OZ

Min Line Šířka / Rozteč interní: 3,0 mil / 3,0mil

MIN LINE Šířka / rozteč Vnější: 4.0mil / 4,0mil

Maximální poměr stran: 10: 1

Tloušťka desky: 0,2 mm-5,0 mm

Maximální velikost panelu (palce): 635 \* 1500 mm

Minimální velikost vrtaného otvoru: 4mil

Tolerance pářeného otvoru: +/- 3mil

Biind / Pohřbeno VIAS (typy All): Ano

Prostřednictvím výplně (vodivé, nevodivé): Ano

Základní materiál: FR-4, fr-4high tg.halogenový materiál volný materiál, rogers, hliníková

základna,Polyimid,

Těžká měď

Povrchová úprava: HASL, OSP, ENIG, HAL-LF, LMMMERISION SILVER,Immerze cín, zlaté prsty, uhlíkový inkoust

## **SMT Výrobní schopnosti**

PCB Materiál: FR-4, CEM-1, CEM-3, hliníková deska

MAX PCB Velikost: 510x460mm

MIN PCB Velikost: 50x50mm

Tloušťka PCB: 0,5 mm-4,5 mm

Tloušťka desky: 0,5-4mm

MIN komponenty Velikost: 0201

Standardní velikost čipové velikosti: 0603 a větší

Složka Maximální výška: 15 mm

Min olovo hřiště: 0,3 mm

Min BGA míč rozteč: 0,4 mm

Přesnost umístění: +/- 0,03 mm