

PCB 025

PCB 025. This is a 4-layer PCB with FR-4 TG150 material. The thickness is 0.80mm. The board size is 115mm x 106.2mm. The number of units is 5. The material is ENIG Au: 0.05-0.10UM. The panelization is CNC.

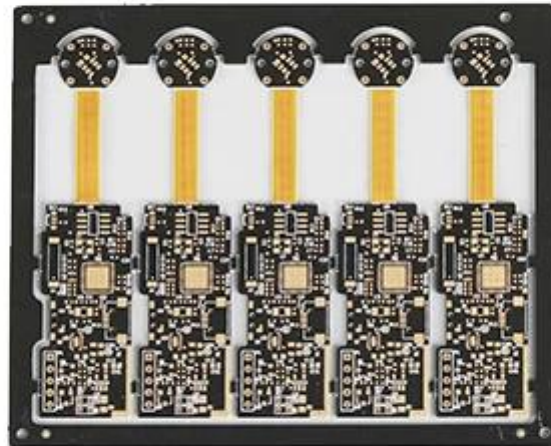
PCB 025. This is a 4-layer PCB with FR-4 TG150 material. The thickness is 0.80mm.

PCB 025. This is a 4-layer PCB with FR-4 TG150 material. The thickness is 0.80mm.

PCB 025. This is a 4-layer PCB with FR-4 TG150 material. The thickness is 0.80mm.

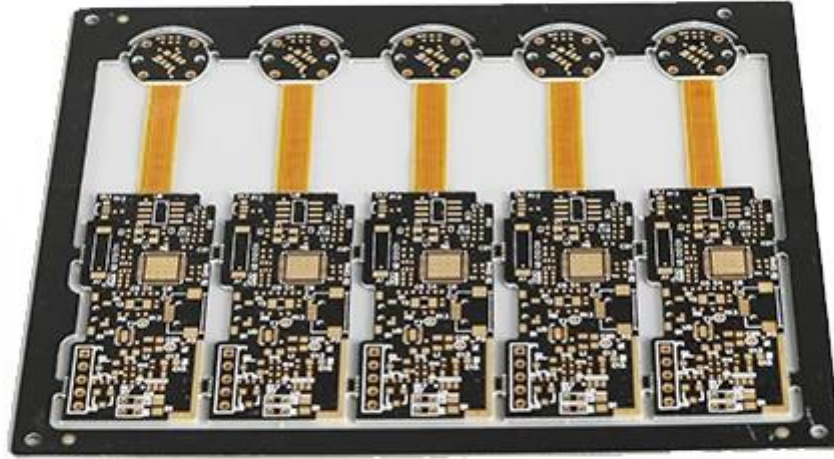
PCB 025

PCB P / N	PCB 025 ENIG
PCB 025	4L (2L 2 + 0.80mm)
PCB 025	FR-4 TG150
PCB 025	0.80mm
PCB 025	1/1/1/1
PCB 025	0.30mm
PCB 025 (PCB 025)	251
PCB 025	5 / 6mil
PCB 025 Y / N (PCB 025)	N
PCB 025	ENIG Au: 0.05-0.10UM
PCB 025	PCB 025 / PCB 025
PCB 025	92.2 : (PCB) PCB 025 18.6 : (PCB) PCB 025
Panelisation	Dim X (mm): 115 Dim Y (mm): 106.2 No of UPS: 5
PCB 025 : PCB 025	N
PCB 025 / PCB 025	CNC



www.o-leading.com





www.o-leading.com









207726 207VZL430354 - Wiring, Printed - Component



ONLINE CERTIFICATIONS DIRECTORY

ZPMV2.E490354
Wiring, Printed - Component

For enhanced search functionality, please visit [UL's full family of databases](#).
Click on a product designation for complete information.

Page Bottom

Wiring, Printed - Component

See General Information for Wiring, Printed - Components

O-LEADING SUPPLY CHAIN CO LIMITED

E490354

Fortune Building, Nanheng West Road
Room 1313
Huizhou, Guangdong 516211, CHINA

	Cond Width			SS/ DS/	Area Diam	Max		Flame	Notes	C
	Min Edge	Min Edge	Cond			Solder Limits	Diper			
Type	max(in)	mm(in)	mic(mil)	DSO	mm(in)	C	sec	Class	DSR	I
Multi-layer (mass laminate) printed wiring boards.										
O-LEADING-401										
	0.2 (0.004)	0.3 (0.012)	34 (1.34)	DS	12.7 (0.5)	260	10	130	V-0	-
O-LEADING-407										
	0.08 (0.003)	0.2 (0.008)	17 (0.67)	DS	9.2 (0.4)	260	10	130	V-0	NI
Multi-layer printed wiring boards.										
O-LEADING-408										
	0.125 (0.005)	0.125 (0.005)	12 (0.47) mil:1.35	DS	50.8 (2.0)	260	20	130	V-0	NI
Single layer printed wiring boards.										
O-LEADING-002										
	0.76 (0.03)	1.14 (0.045)	34 (1.34)	SS	19.1 (0.8)	260	10	105	V-0	NI
O-LEADING-003										
	0.38 (0.015)	1.14 (0.045)	34 (1.34)	SS	19.1 (0.8)	260	10	130	V-0	▲
O-LEADING-033										
	0.15 (0.006)	0.3 (0.012)	34 (1.34)	SS	25.4 (1.0)	260	10	120	V-0	NI
O-LEADING-205										
	0.1 (0.004)	0.3 (0.012)	34 (1.34)	DS	69.6 (2.7)	260	10	130	V-0	NI
O-LEADING-206										
	0.15 (0.006)	0.33 (0.013)	17 (0.67)	DS	69.6 (2.7)	260	10	130	V-0	NI

* - CTI marking is optional and may be marked on the printed wiring board.

Marking: Company name or file number and type designation. May be followed by a suffix to denote factory identification or burning test classification.
Last updated on 2017-01-27

Questions? [Print this page](#) [Terms of Use](#) [Page Top](#)

[http://www.ul.com/ulcertif/onlinecertif/207VZL430354.html?Prod=ZPMV2.E490354&comid=Wiring,Printed-Component&cat=10](#)



Test Report

No. CANEC1805164701

Date: 03 Apr 2018

Page 2 of 8

Test Results:

Test Part Description:

Specimen No. **SGS Sample ID** **Description**
SN1 CAN18-051647.001 Green "PCB"

Remarks:

- (1) 1 mg/kg = 1 ppm = 0.0001%
- (2) MDL = Method Detection Limit
- (3) ND = Not Detected (< MDL)
- (4) "r" = Not Regulated

RoHS Directive (EU) 2015/863 amending Annex II to Directive 2011/65/EU

Test Method: With reference to IEC 62321-4:2014+A1:2017, IEC 62321-5:2013, IEC 62321-7-2:2017, IEC 62321-6:2015 and IEC 62321-8:2017, analyzed by ICP-OES, UV-Vis and GC-MS.

Test Item(s)	Limit	Unit	MDL	Det
Cadmium (Cd)	100	mg/kg	2	ND
Lead (Pb)	1,000	mg/kg	2	9
Mercury (Hg)	1,000	mg/kg	2	ND
Hexavalent Chromium (CrVI)	1,000	mg/kg	8	ND
Sum of PBBs	1,000	mg/kg	-	ND
Mono-bromobiphenyl	-	mg/kg	5	ND
Dibromobiphenyl	-	mg/kg	5	ND
Tribromobiphenyl	-	mg/kg	5	ND
Tetrabromobiphenyl	-	mg/kg	5	ND
Pentabromobiphenyl	-	mg/kg	5	ND
Hexabromobiphenyl	-	mg/kg	5	ND
Heptabromobiphenyl	-	mg/kg	5	ND
Octabromobiphenyl	-	mg/kg	5	ND
Nonabromobiphenyl	-	mg/kg	5	ND
Decabromobiphenyl	-	mg/kg	5	ND
Sum of PBDEs	1,000	mg/kg	-	ND
Mono-bromodiphenyl ether	-	mg/kg	5	ND
Dibromodiphenyl ether	-	mg/kg	5	ND
Tribromodiphenyl ether	-	mg/kg	5	ND
Tetrabromodiphenyl ether	-	mg/kg	5	ND
Pentabromodiphenyl ether	-	mg/kg	5	ND



SGS is pleased to announce the launch of its new RoHS testing services. The services are designed to help manufacturers and their customers ensure compliance with the RoHS Directive (EU) 2011/65/EU and its amendments. The services include: RoHS testing of printed wiring boards (PWBs) and other electronic components. The services are available in the following countries: China, India, Japan, Korea, Mexico, Singapore, Taiwan, Thailand, Vietnam. For more information, please contact your local SGS office or visit our website: [www.sgsgroup.com](#).
中国 广州 德信检测技术有限公司 检测部 邮编: 510663 100-02-010000 100-02-010112 100-02-010113 100-02-010114
Member of the SGS Group (SGL SA)

Shipping service

Shipping service	16 days
Shipping service	7-12days



Quality Control

1. Quality Control O-Leading

.Quality Control O-Leading is a process that ensures the quality of the product. It involves the use of various tools and techniques to identify and eliminate defects. The process is based on the ISO 9001: 2008 standard.
2. Quality Control O-Leading

.Quality Control O-Leading is a process that ensures the quality of the product. It involves the use of various tools and techniques to identify and eliminate defects. The process is based on the ISO 9001: 2008 standard.

.Quality Control O-Leading is a process that ensures the quality of the product. It involves the use of various tools and techniques to identify and eliminate defects. The process is based on the ISO 9001: 2008 standard.

.Quality Control O-Leading is a process that ensures the quality of the product. It involves the use of various tools and techniques to identify and eliminate defects. The process is based on the ISO 9001: 2008 standard.

.Quality Control O-Leading is a process that ensures the quality of the product. It involves the use of various tools and techniques to identify and eliminate defects. The process is based on the ISO 9001: 2008 standard.

3. what are the different types of PCB materials?

FR4 is the most common PCB material. Other materials include TG, Arlon, Teflon, PI, etc.

4. What are the different types of PCB layout software?

Gerber 274-X, Cam350, CAD, Protel 99se, PADS, DXP, Eagle.

5. What are the different types of PCB manufacturing processes?

PCB manufacturing processes include: AOI, PTH, E/T, etc.