

PCB P/N

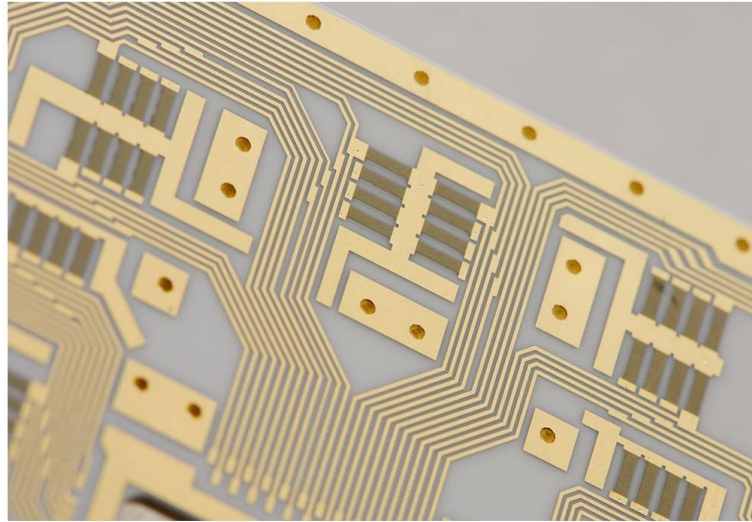
PCB P/N .SS-66253-A
 2L
 0.80mm
 1 / 1OZ
 0.2mm
 37
 /
 Y / N (N)
 ENIG
 N / A /
 Dim X (mm): 105 Dim Y (mm): 127
 Panelisation Dim X (mm): 105 Dim Y (mm): 127 No of UPS: 1
 N
 CNC

025. 020

25

PCB P/N

PCB P / N	SS-66253-A
	2L
thk	0.80mm
	1 / 1OZ
	0.2mm
	37
/	/
Y / N ()	N
	ENIG
	N / A /
	Dim X (mm): 105 Dim Y (mm): 127
Panelisation	Dim X (mm): 105 Dim Y (mm): 127 No of UPS: 1
:	N
/	CNC



www.o-leading.com









QUALITY MANAGEMENT SYSTEM CERTIFICATE

Certificate No: 16118Q10347R05

We hereby certify that

O-LEADING SUPPLY CHAIN(HK) CO.,LIMITED
 Credit No: 61691591-000-07-17-2
 Registration Add: ROOM 603D 6/F HANG PONT COMMERCIAL BUILDING,31 TONKIN ST CHEUNG SHA WAN, KL, HK
 Business Add: 1313 Floor 13 Fortune Building, Danstai Town Huiyang District, Huizhou, Guangdong, China

Has implemented and maintains a **Quality Management System**
 Which fulfills the requirements of the following standards
GB/T19001-2016 idt ISO9001:2015

Scope of certification
 Sales of printed circuit boards

Initial Issuance period: February 27, 2018
 This certificate is valid during: February 27, 2018 -- February 26, 2021
 This certificate is invalid without CICC qualified label in the following period

First supervision and audit	Qualified mark	Second supervision and audit	Qualified mark
-----------------------------	----------------	------------------------------	----------------

The certification registration scope shall include the production services scope which fall to be covered by the relevant effective administrative permission and qualification permission required by the state. The effectiveness of this certificate shall be evaluated by annual surveillance audit of CICC. The certificate shall be valid when used together with the surveillance audit conclusion. The related information of this certification can be searched at the public website of website www.cicc.com.cn.

201726 201VZL430354 - Wiring, Printed - Component

UL ONLINE CERTIFICATIONS DIRECTORY

ZPMV2.E490354
Wiring, Printed - Component

For enhanced search functionality, please visit UL's [online family of databases](#). Click on a product designation for complete information.

[Page Bottom](#)

Wiring, Printed - Component

[See General Information for Wiring, Printed - Components](#)

O-LEADING SUPPLY CHAIN CO LIMITED E490354
 Fortune Building, Nanheng West Road
 Room 1313
 Huizhou, Guangdong 516211, CHINA

Type	Cond Width			SS/ DS/ Diam	Area	Solder		Diper		Flame	RoHS	C
	Min	Max	Max			Min	Max	Temp	Class			
	mm(in)	mm(in)	mm(in)			mm(in)	C	sec	C			
Multi-layer (mass laminate) printed wiring boards.												
D-LEADING-001												
	0.2 (0.004)	0.5 (0.012)	34 (1.34)	D6	12.7 (0.5)	260	10	130	V-0	-	-	-
D-LEADING-002												
	0.08 (0.003)	0.2 (0.008)	17 (0.67)	D6	9.2 (0.4)	260	10	130	V-0	▲	-	-
Multi-layer printed wiring boards.												
D-LEADING-008												
	0.125 (0.005)	0.125 (0.005)	12 (0.47) min:1.35	D6	50.8 (2.0)	260	20	130	V-0	▲	-	-
Single layer printed wiring boards.												
D-LEADING-002												
	0.76 (0.015)	1.14 (0.045)	34 (1.34)	S5	19.1 (0.8)	260	10	105	V-0	▲	-	-
D-LEADING-003												
	0.38 (0.015)	1.14 (0.045)	34 (1.34)	S5	19.1 (0.8)	260	10	130	V-0	▲	-	-
D-LEADING-033												
	0.15 (0.006)	0.3 (0.012)	34 (1.34)	S5	25.4 (1.0)	260	10	120	V-0	▲	-	-
D-LEADING-205												
	0.2 (0.004)	0.3 (0.012)	34 (1.34)	D6	69.6 (2.7)	260	10	130	V-0	▲	-	-
D-LEADING-206												
	0.15 (0.006)	0.33 (0.013)	17 (0.67)	D6	69.6 (2.7)	260	10	130	V-0	▲	-	-

* - CTI marking is optional and may be marked on the printed wiring board.

Marking: Company name or file number and type designation. May be followed by a suffix to denote factory identification or burning test classification.
 Last updated on 2017-01-27

Questions? [Print this page](#) [Terms of Use](#) [Page Top](#)

http://www.ul.com/onlinecertifications/UL60718RN/E490354/Print?ZPMV2.E490354&family=Wiring,Printed-Component&ul=10



Test Report No. CAVEC1805164701 Date: 03 Apr 2018 Page 2 of 8

Test Results:

Test Part Description:

Specimen No. **SGS Sample ID** **Description**
 SH1 CAN18-051647.001 Green "PCB"

Remarks:

- (1) 1 mg/kg = 1 ppm = 0.0001%
- (2) MDL = Method Detection Limit
- (3) ND = Not Detected (< MDL)
- (4) "-" = Not Regulated

RoHS Directive (EU) 2015/863 amending Annex II to Directive 2011/65/EU

Test Method: With reference to IEC 62321-4:2014+A1:2017, IEC62321-5:2013, IEC62321-7-2:2017, IEC 62321-6:2015 and IEC62321-8:2017, analyzed by ICP-OES, UV-Vis and GC-MS.

Test Items	Limit	Unit	MDL	Det
Cadmium (Cd)	100	mg/kg	2	ND
Lead (Pb)	1,000	mg/kg	2	9
Mercury (Hg)	1,000	mg/kg	2	ND
Hexavalent Chromium (CrVI)	1,000	mg/kg	8	ND
Sum of PBBs	1,000	mg/kg	-	ND
Monobromobiphenyl	-	mg/kg	5	ND
Dibromobiphenyl	-	mg/kg	5	ND
Tribromobiphenyl	-	mg/kg	5	ND
Tetrabromobiphenyl	-	mg/kg	5	ND
Pentabromobiphenyl	-	mg/kg	5	ND
Hexabromobiphenyl	-	mg/kg	5	ND
Heptabromobiphenyl	-	mg/kg	5	ND
Octabromobiphenyl	-	mg/kg	5	ND
Nonabromobiphenyl	-	mg/kg	5	ND
Decabromobiphenyl	-	mg/kg	5	ND
Sum of PBDEs	1,000	mg/kg	-	ND
Monobromodiphenyl ether	-	mg/kg	5	ND
Dibromodiphenyl ether	-	mg/kg	5	ND
Tribromodiphenyl ether	-	mg/kg	5	ND
Tetrabromodiphenyl ether	-	mg/kg	5	ND
Pentabromodiphenyl ether	-	mg/kg	5	ND



SGS shall not be held responsible for any loss or damage to the property of the client. The client is responsible for the safety of the samples. The client is responsible for the safety of the personnel. The client is responsible for the safety of the environment. The client is responsible for the safety of the community. The client is responsible for the safety of the world.

SGS (China) Limited
 100000
 100000
 100000
 100000

Shipping service

Shipping service	16 days
Shipping service	7-12days



Quality Management System

1. Quality Management System O-Leading

Quality Management System O-Leading is a system that ensures the quality of products and services.

 1. Quality Management System O-Leading is based on ISO 9001: 2008.
 2. Quality Management System O-Leading is based on the principle of customer focus.
 3. Quality Management System O-Leading is based on the principle of continuous improvement.
 4. Quality Management System O-Leading is based on the principle of data-driven decision making.
 5. Quality Management System O-Leading is based on the principle of employee involvement.
2. Quality Management System O-Leading

Quality Management System O-Leading is a system that ensures the quality of products and services. It is based on the principle of customer focus, continuous improvement, data-driven decision making, and employee involvement.

Quality Management System O-Leading is based on the principle of customer focus. It is based on the principle of continuous improvement. It is based on the principle of data-driven decision making. It is based on the principle of employee involvement.

Quality Management System O-Leading is based on the principle of customer focus. It is based on the principle of continuous improvement. It is based on the principle of data-driven decision making. It is based on the principle of employee involvement.

3. what are the different types of PCB materials?

FR4 is the most common PCB material. Other materials include TG, Arlon, Teflon, PI, etc.

4. What are the different types of PCB manufacturing processes?

Common PCB manufacturing processes include Gerber 274-X, Cam350, CAD, Protel 99se, PADS, DXP, Eagle.

5. What are the different types of PCB assembly processes?

Common PCB assembly processes include AOI, PTH, E/T, etc.