

PCB P/N: T002_EthModule

This document is the property of the customer. It is not to be reproduced or distributed in any form without the written consent of the customer. The customer is responsible for the accuracy of the data provided. The manufacturer is not responsible for any errors or omissions in this document. The customer is responsible for the accuracy of the data provided. The manufacturer is not responsible for any errors or omissions in this document.

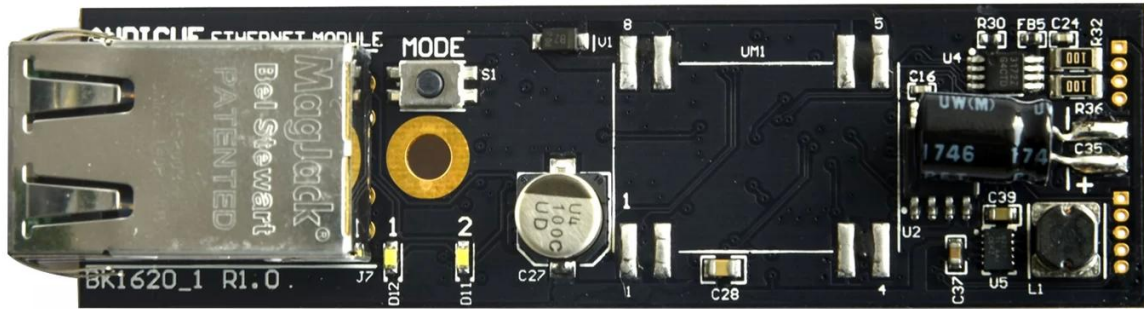
025. The customer is responsible for the accuracy of the data provided. The manufacturer is not responsible for any errors or omissions in this document.

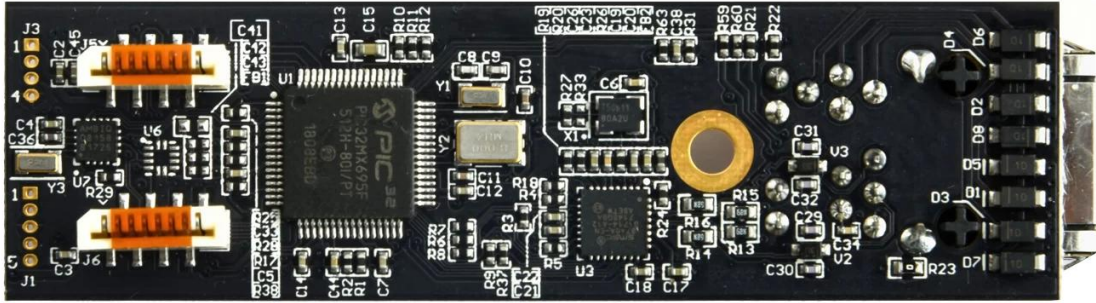
This document is the property of the customer. It is not to be reproduced or distributed in any form without the written consent of the customer. The customer is responsible for the accuracy of the data provided. The manufacturer is not responsible for any errors or omissions in this document.

Customer Name: XXXXX

PCB Specifications

PCB P / N	T002_EthModule
PCB Type	4L
Material	FR-4 TG135
Thickness	1.6MM
Drill Size	1/1 / 1 / 1OZ
Annular Ring Thickness	0.3MM
PCB Layers (pc)	218
Panel Size / Units	5 / 5mil
Surface Finish	Y / 100 +/- 10 Ω
Minimum Layer Thickness	0.05-0.10UM
Minimum Drill Size	0.05mm
Panel Dimensions	Dim X (mm): 80 □ Dim Y (mm): 22.6
Panelisation	Dim X (mm): 90□ Dim Y (mm): 121□ No of UPS: 5
Panel Size / Units	N
Manufacturing Process	CNC + V-CUT







www.o-leading.com









QUALITY MANAGEMENT SYSTEM CERTIFICATE
 Certificate No: 16118Q10347R05

We hereby certify that
O-LEADING SUPPLY CHAIN(HK) CO.,LIMITED
 Credit No: 61691591-000-07-17-2
 Registration Add: ROOM 603D 6/F HANG PONT COMMERCIAL BUILDING,31 TONKIN ST,CHEUNG SHA WAN,KL, HK
 Business Add: 1313 Floor 13 Fortune Building, Danstui Town Huiyang District, Huizhou, Guangdong, China

Has implemented and maintains a **Quality Management System**
 Which fulfills the requirements of the following standards
 GB/T19001-2016 idt ISO9001:2015

Scope of certification
 Sales of printed circuit boards

Initial Issuance period: February 27, 2018
 This certificate is valid during: February 27, 2018 -- February 26, 2021
 This certificate is invalid without CICC qualified label in the following period

First supervision and audit	Qualified mark	Second supervision and audit	Qualified mark
-----------------------------	----------------	------------------------------	----------------

The certification registration scope shall include those products/services scopes which fall to be covered by the relevant effective administrative permission and qualification permission required by the state. The effectiveness of this certificate shall be evaluated by annual surveillance audit of CICC. The certificate shall be valid when used together with the surveillance audit conclusion. The related information of this certification can be searched at the public website of company www.cicc.com.cn.

201726 201VZL430354 - Wiring, Printed - Component

ZPMV2.E490354
Wiring, Printed - Component

For enhanced search functionality, please visit UL's [UL Product Databases](#).
 Click on a product designation for complete information.
[Page Bottom](#)

Wiring, Printed - Component

[See General Information for Wiring, Printed - Components](#)

O-LEADING SUPPLY CHAIN CO LIMITED 4190354

Fortune Building, Nanheng West Road
 Room 1313
 Huizhou, Guangdong 516211, CHINA

	Cond Width			SS/ DS/ Diam	Area	Solder		Diper		Flame	RoHS	C
	Min	Max	Edge			Min	Max	Temp	Class			
Typ	max(in)	mm(in)	mic(mil)	DS0	mm(in)	C	sec	C	Class	DSR	I	
Multi-layer (mass laminate) printed wiring boards.												
O-LEADING-401												
	0.2 (0.004)	0.3 (0.012)	34 (1.34)	D6	12.7 (0.5)	260	10	130	V-0	-	-	
O-LEADING-407												
	0.08 (0.003)	0.2 (0.008)	17 (0.67)	D5	9.2 (0.4)	260	10	130	V-0	NI	-	
Multi-layer printed wiring boards.												
O-LEADING-408												
	0.125 (0.005)	0.125 (0.005)	12 (0.47) 31(1.25)	D6	50.8 (2.0)	260	20	130	V-0	NI	*	
Single layer printed wiring boards.												
O-LEADING-002												
	0.76 (0.015)	1.14 (0.045)	34 (1.34)	S5	19.1 (0.8)	260	10	105	V-0	NI	-	
O-LEADING-003												
	0.38 (0.015)	1.14 (0.045)	34 (1.34)	S5	19.1 (0.8)	260	10	130	V-0	▲	-	
O-LEADING-033												
	0.15 (0.006)	0.3 (0.012)	34 (1.34)	S5	25.4 (1.0)	260	10	120	V-0	NI	-	
O-LEADING-205												
	0.1 (0.004)	0.3 (0.012)	34 (1.34)	D6	69.6 (2.7)	260	10	130	V-0	NI	-	
O-LEADING-206												
	0.15 (0.006)	0.33 (0.013)	17 (0.67)	D5	69.6 (2.7)	260	10	130	V-0	NI	-	

* - CTI marking is optional and may be marked on the printed wiring board.

Marking: Company name or file number and type designation. May be followed by a suffix to denote factory identification or burning test classification.
 Last updated on 2017-01-27

Questions? [Print this page](#) [Terms of Use](#) [Page Top](#)

[http://www.ul.com/ulcertification/UL60718RMS/ewg/ulcert/zpmv2.e490354.html?Wiring,Printed-Component&id=10](#)



Test Report No. CANEC1805164701 Date: 03 Apr 2018 Page 2 of 8

Test Results:

Test Part Description:

Specimen No. **SGS Sample ID** **Description**
 SN1 CAN18-051647.001 Green "PCB"

Remarks:

- (1) 1 mg/kg = 1 ppm = 0.0001%
- (2) MDL = Method Detection Limit
- (3) ND = Not Detected (< MDL)
- (4) "-" = Not Regulated

RoHS Directive (EU) 2015/863 amending Annex II to Directive 2011/65/EU

Test Method: With reference to IEC 62321-4:2014+A1:2017, IEC 62321-5:2013, IEC 62321-7-2:2017, IEC 62321-6:2015 and IEC 62321-8:2017, analyzed by ICP-OES, UV-Vis and GC-MS.

Test Item(s)	Limit	Unit	MDL	Det
Cadmium (Cd)	100	mg/kg	2	ND
Lead (Pb)	1,000	mg/kg	2	9
Mercury (Hg)	1,000	mg/kg	2	ND
Hexavalent Chromium (CrVI)	1,000	mg/kg	8	ND
Sum of PBBs	1,000	mg/kg	-	ND
Monobromobiphenyl	-	mg/kg	5	ND
Dibromobiphenyl	-	mg/kg	5	ND
Tribromobiphenyl	-	mg/kg	5	ND
Tetrabromobiphenyl	-	mg/kg	5	ND
Pentabromobiphenyl	-	mg/kg	5	ND
Hexabromobiphenyl	-	mg/kg	5	ND
Heptabromobiphenyl	-	mg/kg	5	ND
Octabromobiphenyl	-	mg/kg	5	ND
Nonabromobiphenyl	-	mg/kg	5	ND
Decabromobiphenyl	-	mg/kg	5	ND
Sum of PBDEs	1,000	mg/kg	-	ND
Monobromodiphenyl ether	-	mg/kg	5	ND
Dibromodiphenyl ether	-	mg/kg	5	ND
Tribromodiphenyl ether	-	mg/kg	5	ND
Tetrabromodiphenyl ether	-	mg/kg	5	ND
Pentabromodiphenyl ether	-	mg/kg	5	ND



SGS is pleased to announce the launch of its new online platform for the collection of test results. The platform is designed to provide a secure and efficient way for clients to upload their test results. The platform is available in English, French, German, Italian, Japanese, Korean, Spanish, and Chinese. For more information, please contact your local SGS office or visit [www.sgslab.com](#).

Member of the SGS Group (SGS SA)

EMS 航空 快递 服务

EMS 航空 快递 服务	16 小时内 送达 全球 主要 城市 的 包裹 服务
EMS 航空 快递 服务	7-12days

Shipping service

The image displays a collection of shipping service logos and icons. At the top left is the EMS logo with the tagline 'Worldwide express mail service'. Below it are the logos for CHINA POST and Hongkong Post. To the right, a blue and white airplane is shown in flight. In the center, a globe is positioned above a large blue cargo ship and a blue semi-truck. At the bottom left is the FedEx Express logo. The entire scene is set against a white background with a subtle reflection effect.

O-Loading 服务

1. O-Loading 服务 (O-Loading Service) 是指...

是指 在 货物 装运 前 进行 的 一系列 检查 和 测试 工作。

1. 符合 ISO 9001: 2008 质量管理体系。
2. 提供 全面 的 检测 和 测试 服务。
3. 采用 先进 的 检测 和 测试 设备 . 确保 检测 和 测试 的 准确性 和 可靠性 . AOI (自动 光学 检测) 是 主要 的 检测 方法 .
4. 提供 全面 的 检测 和 测试 报告 .
5. 提供 全面 的 检测 和 测试 服务 .

2. O-Loading 服务 是指...

是指 在 货物 装运 前 进行 的 一系列 检查 和 测试 工作 . 我们 提供 全面 的 检测 和 测试 服务 . 我们 的 检测 和 测试 设备 符合 31 项 国际 标准 . 我们 的 检测 和 测试 服务 符合 ISO 9001: 2008 质量管理体系 . 我们 的 检测 和 测试 服务 符合 O-Loading 标准 . 我们 的 检测 和 测试 服务 符合 全面 的 检测 和 测试 报告 . 我们 的 检测 和 测试 服务 符合 全面 的 检测 和 测试 报告 . 我们 的 检测 和 测试 服务 符合 全面 的 检测 和 测试 报告 .

3. what are the different types of PCB materials?

FR4 is the most common PCB material. Other materials include TG, Arlon, Teflon, PI, etc.

4. What are the different types of PCB manufacturing processes?

Gerber 274-X, Cam350, CAD, Protel 99se, PADS, DXP, Eagle.

5. What are the different types of PCB assembly processes?

PTH, AOI, PTH, E/T, etc.