

PCB O-leading:

PCB assembly is a complex process involving various materials and components. The quality of the PCB assembly depends on the quality of the materials used, the precision of the manufacturing process, and the expertise of the assembly team. MCPCB (Metal Core PCB) is a type of PCB that is used in high-power applications. It is made of a metal core with a copper layer on top. The metal core provides excellent thermal conductivity, which is essential for high-power applications. MCPCB is used in a wide range of applications, including power electronics, automotive electronics, and industrial electronics.

PCB assembly is a complex process involving various materials and components. The quality of the PCB assembly depends on the quality of the materials used, the precision of the manufacturing process, and the expertise of the assembly team. MCPCB (Metal Core PCB) is a type of PCB that is used in high-power applications. It is made of a metal core with a copper layer on top. The metal core provides excellent thermal conductivity, which is essential for high-power applications. MCPCB is used in a wide range of applications, including power electronics, automotive electronics, and industrial electronics.

COPPER PLATE HOLES MINIMUM .025 AVG .020MIN .. HOLES MAY NOT NOT PLUGGED

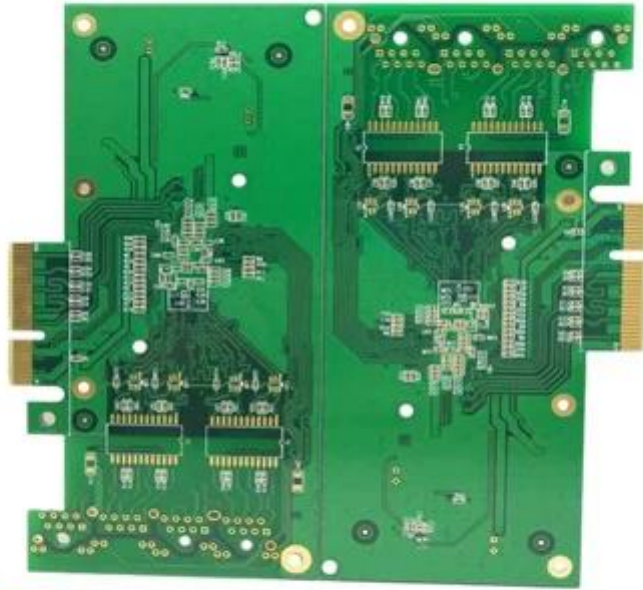
PCB assembly is a complex process involving various materials and components. The quality of the PCB assembly depends on the quality of the materials used, the precision of the manufacturing process, and the expertise of the assembly team. MCPCB (Metal Core PCB) is a type of PCB that is used in high-power applications. It is made of a metal core with a copper layer on top. The metal core provides excellent thermal conductivity, which is essential for high-power applications. MCPCB is used in a wide range of applications, including power electronics, automotive electronics, and industrial electronics.

PCB assembly is a complex process involving various materials and components. The quality of the PCB assembly depends on the quality of the materials used, the precision of the manufacturing process, and the expertise of the assembly team. MCPCB (Metal Core PCB) is a type of PCB that is used in high-power applications. It is made of a metal core with a copper layer on top. The metal core provides excellent thermal conductivity, which is essential for high-power applications. MCPCB is used in a wide range of applications, including power electronics, automotive electronics, and industrial electronics.

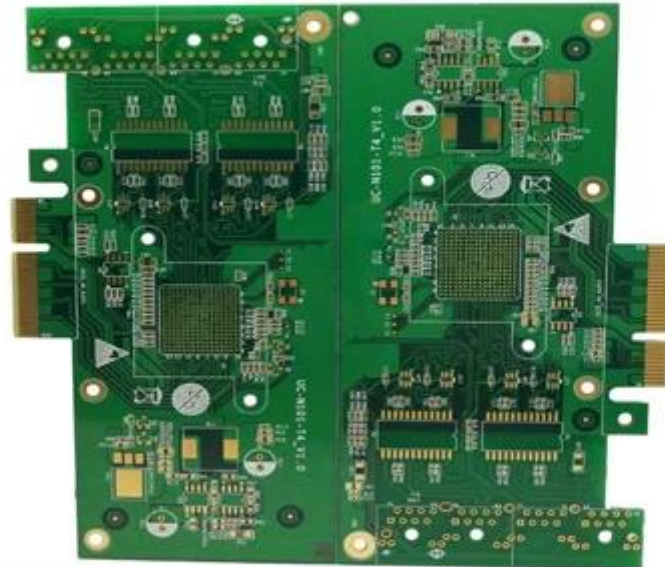
PCB assembly	PCB assembly (including materials and components)	PCB assembly	O-PCB assembly
PCB assembly	FR-4 PCB assembly	PCB assembly	0.5OZ-5OZ
PCB assembly	0.2mm PCB	PCB assembly	0.2mm PCB
PCB assembly	PCB assembly with OSP and HASL	PCB assembly	0.1-5mm
PCB assembly	PCB assembly with various materials	PCB assembly	PCB assembly PCB
PCB assembly	ISO9001 UL SGS	Q / PCB assembly	10PCS-100PCS
PCB assembly	0.01kg -5kg	PCB assembly	10 PCB
PCB assembly	PCB assembly with various materials	PCB assembly	0.2mm PCB
PCB assembly	PCB assembly with various materials	PCB assembly	\$ 0.1- \$ 10
PCB design	PCB design	PCB design	0.01m3-10m3

PCB assembly & PCB design

PCB assembly	16 PCB assembly oem PCB assembly
PCB assembly	7-12days



www.o-leading.com



www.o-leading.com

