

PCB P/N

PCB P/N 025. Dimensions: 73.6mm x 74mm. No of UPS: 10. Material: FR-4 TG150. Thickness: 0.80mm. Surface finish: ENIG Au: 0.05-0.12UM. Panelisation: 29.8mm x 11.2mm.

025. Dimensions: 73.6mm x 74mm. No of UPS: 10.

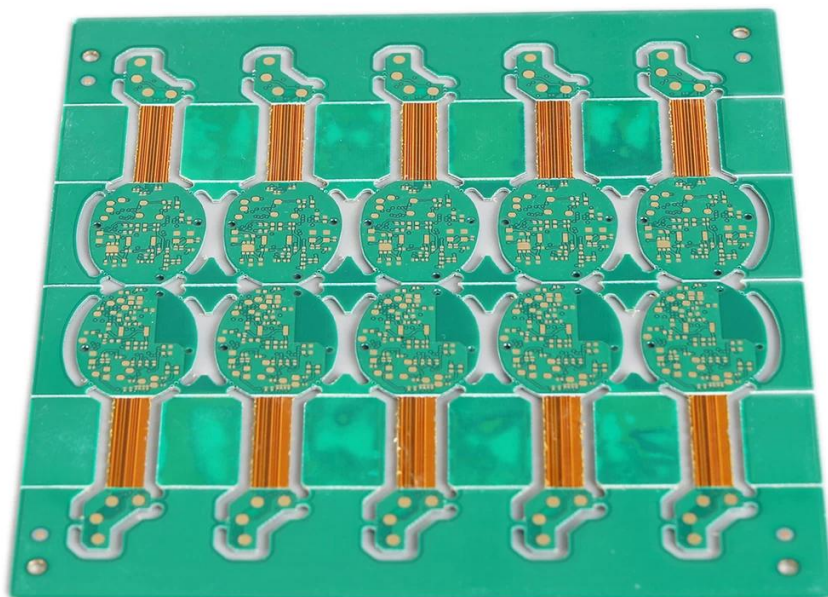
Panelisation: 29.8mm x 11.2mm. No of UPS: 10.

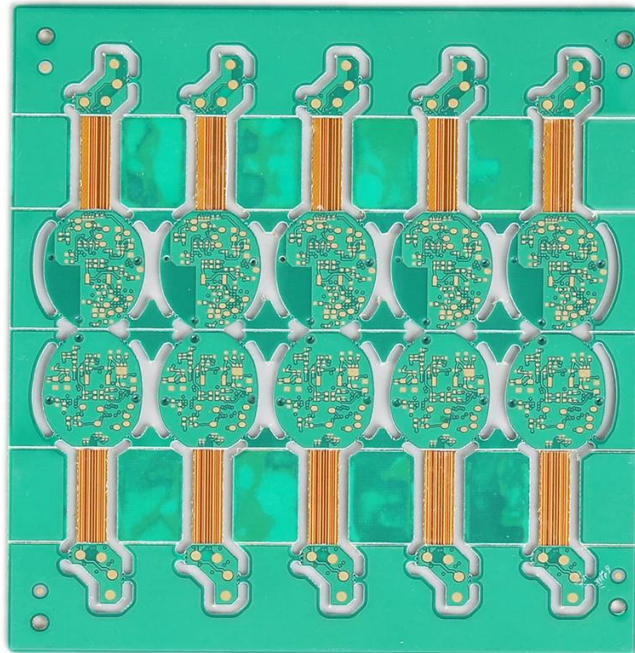
Surface finish: ENIG Au: 0.05-0.12UM.

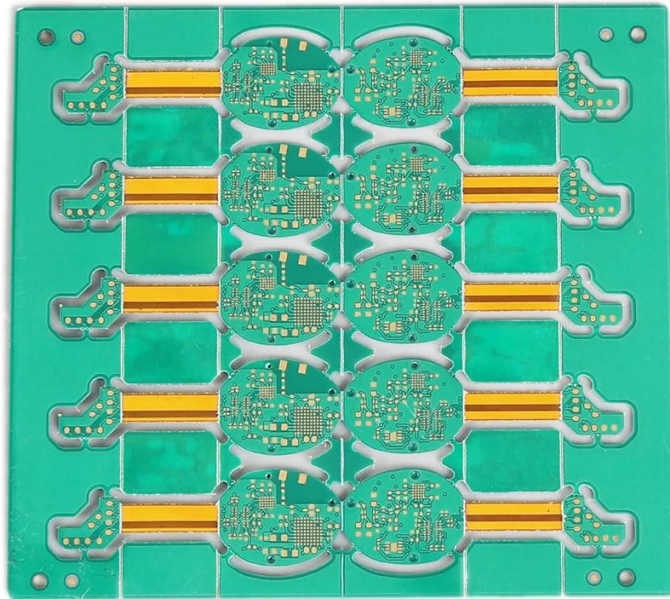
PCB P/N

PCB P / N	6L (4 300mmL + 2 100mmL)
Material	FR-4 TG150
Thickness thk	0.80mm
Panelisation	1 / H / H / H / H / 1oz
Panel size	0.20mm
No of panels	187
Panel size	4 / 4mil
Panelisation Y / N	Y
Surface finish	ENIG Au: 0.05-0.12UM
Panelisation	Panel size / Panel size
Panelisation	Panel size 29.8 : (mm) Panel size Y (11.2 : (mm)
Panelisation	Dim X (mm): 73.6mm Dim Y (mm): 74mm No of UPS: 10
Panelisation	N
Panelisation / Panelisation	CNC

.







www.o-leading.com









CICC INSPECTION CERTIFICATION



QUALITY MANAGEMENT SYSTEM CERTIFICATE
Certificate No.: 16118Q10347R05

We hereby certify that
O-LEADING SUPPLY CHAIN(HK) CO.,LIMITED
Credit No.: 61691591-000-07-17-2
Registration Add: ROOM 603D 6/F HANG PONT COMMERCIAL BUILDING,31 TONKIN ST,CHEUNG SHA WAN, KL, HK
Business Add: 1313 Floor 13 Fortune Building, Danshui Town Huiyang District, Huizhou, Guangdong, China

Has implemented and maintains a **Quality Management System**
Which fulfils the requirements of the following standards
GB/T19001-2016 idt ISO9001:2015

Scope of certification
Sales of printed circuit boards

Initial Issuance period: February 27, 2018
This certificate is valid during: February 27, 2018 -- February 26, 2021
This certificate is invalid without CICC qualified label in the following period

First supervision and audit	Qualified mark	Second supervision and audit	Qualified mark
-----------------------------	----------------	------------------------------	----------------

The certification inspection scope does't include those production services which shall be subject to the relevant effective administrative permission and qualification permission required by the state. The effectiveness of this certificate shall be subject to annual surveillance audit of CICC. The certificate shall be valid when used together with the surveillance audit conclusion. The related information of this certification can be searched at the portal of the site of company www.cicc.com.






201726 201VZL430354 - Wiring, Printed - Component

 ONLINE CERTIFICATIONS DIRECTORY

ZPMV2.E490354
Wiring, Printed - Component

For enhanced search functionality, please visit [UL's QPL Family of Databases](#). Click on a product designation for complete information.

[Page Bottom](#)


Wiring, Printed - Component

[See General Information for Wiring, Printed - Components](#)

O-LEADING SUPPLY CHAIN CO LIMITED 4190354
Fortune Building, Nanheng West Road
Room 1313
Huizhou, Guangdong 516211, CHINA

Type	Cond Width			SS/ DS/ Diam	Solder Limits	Dper	Temp	Flame Class	RoHS UL796	C
	Min	Min Edge	Cond							
Hull/layer (mass laminate) printed wiring boards.										
D-LEADING-401										
	0.2 (0.004)	0.3 (0.012)	34 (1.34)	D6	12.7 (0.5)	260	10	130	V-0	-
D-LEADING-407										
	0.08 (0.003)	0.2 (0.008)	17 (0.67)	D5	9.2 (0.4)	260	10	170	V-0	NI
Hull/layer printed wiring boards.										
D-LEADING-408										
	0.125 (0.005)	0.125 (0.005)	12 (0.47) ml:1.35	D6	50.8 (2.0)	260	20	130	V-0	NI
Single layer printed wiring boards.										
D-LEADING-002										
	0.76 (0.03)	1.14 (0.045)	34 (1.34)	S5	19.1 (0.75)	260	10	105	V-0	NI
D-LEADING-003										
	0.38 (0.015)	1.14 (0.045)	34 (1.34)	S5	19.1 (0.75)	260	10	130	V-0	▲
D-LEADING-033										
	0.15 (0.006)	0.3 (0.012)	34 (1.34)	S5	25.4 (1.0)	260	10	120	V-0	NI
D-LEADING-205										
	0.1 (0.004)	0.3 (0.012)	34 (1.34)	D6	69.6 (2.7)	260	10	130	V-0	NI
D-LEADING-206										
	0.15 (0.006)	0.33 (0.013)	17 (0.67)	D5	69.6 (2.7)	260	10	130	V-0	NI

* - CTI marking is optional and may be marked on the printed wiring board.



Test Report No. CANEC1805164701 Date: 03 Apr 2018 Page 2 of 8

Test Results:

Test Part Description:

Specimen No.	SGS Sample ID	Description
SN1	CAN18-051647.001	Green "PCB"

Remarks:

(1) 1 mg/kg = 1 ppm = 0.0001%

(2) MDL = Method Detection Limit


(3) ND = Not Detected (< MDL)

(4) "-" = Not Regulated

RoHS Directive (EU) 2015/863 amending Annex II to Directive 2011/65/EU

Test Method: With reference to IEC 62321-4:2014+A1:2017, IEC 62321-5:2013, IEC 62321-7-2:2017, IEC 62321-6:2015 and IEC 62321-8:2017, analyzed by ICP-OES, UV-Vis and GC-MS.

Test Item(s)	Limit	Unit	MDL	Det?
Cadmium (Cd)	100	mg/kg	2	ND
Lead (Pb)	1,000	mg/kg	2	9
Mercury (Hg)	1,000	mg/kg	2	ND
Hexavalent Chromium (Cr(VI))	1,000	mg/kg	8	ND
Sum of PBBs	1,000	mg/kg	-	ND
Monobromodiphenyl ether	-	mg/kg	5	ND
Dibromodiphenyl ether	-	mg/kg	5	ND
Tri bromodiphenyl ether	-	mg/kg	5	ND
Tetrabromodiphenyl ether	-	mg/kg	5	ND
Pentabromodiphenyl ether	-	mg/kg	5	ND
Hexabromodiphenyl ether	-	mg/kg	5	ND
Heptabromodiphenyl ether	-	mg/kg	5	ND
Octabromodiphenyl ether	-	mg/kg	5	ND
Nonabromodiphenyl ether	-	mg/kg	5	ND
Decabromodiphenyl ether	-	mg/kg	5	ND
Sum of PBDEs	1,000	mg/kg	-	ND
Monobromodiphenyl ether	-	mg/kg	5	ND
Dibromodiphenyl ether	-	mg/kg	5	ND
Tri bromodiphenyl ether	-	mg/kg	5	ND
Tetrabromodiphenyl ether	-	mg/kg	5	ND
Pentabromodiphenyl ether	-	mg/kg	5	ND



This document is a copy of the original document. It is not valid for legal purposes. The original document is the only valid document. The original document is the only valid document. The original document is the only valid document.

Shipping service

Shipping service	16	Shipping service
Shipping service	7-12days	



Shipping service

1. Shipping service O-Leading

. Shipping service is a leading service provider in the industry. It is certified to ISO 9001: 2008.

2. Shipping service is a leading service provider in the industry. It is certified to ISO 9001: 2008.

3. Shipping service is a leading service provider in the industry. It is certified to ISO 9001: 2008.

4. Shipping service is a leading service provider in the industry. It is certified to ISO 9001: 2008.

5. Shipping service is a leading service provider in the industry. It is certified to ISO 9001: 2008.
2. Shipping service O-Leading

Shipping service is a leading service provider in the industry. It is certified to ISO 9001: 2008. It is also certified to ISO 14001: 2004. Shipping service is a leading service provider in the industry. It is certified to ISO 9001: 2008. It is also certified to ISO 14001: 2004. Shipping service is a leading service provider in the industry. It is certified to ISO 9001: 2008. It is also certified to ISO 14001: 2004.

□□□□□□ □□□□□□.

3. what □□□□ □□□□□ □□□□□ o- □□□□□□□□ □□□□□□□□

FR4 □□□□□ □ □□□□□ TG □□□□□ □ □□□□□□□□□ □□ □□□□□□ □□□□□ □ Arlon □ Telfon □ / □□□□□□□□□□ □□□□□□ □□□□□□ □□□□□□ □ PI □ □□□.

4. □□□□□□□ □□□□□ □□□□□□ □□□□□ □□□□□□ □□□□□□□ □□ □□

□□□□□□ □□□□□□ □□□□□ □□□□□ □□ Gerber 274-X. □□□□□□ □□□□□ □□□□□ □□ □□□ □□□ □□□□□□□□□□ Cam350 □ CAD □ Protel 99se □ PADS □ DXP □ Eagle.

5. □□□□□□□ □□□□□ □□□□□ □□□□□ □□□□□□ □□□□□□□ □□□□□□ □□□□ □□ □□

□□□□□ □□□ ← □□□ □□□□□ □□□□□ ← □□□□□□ □□□□□ ← AOI □□□ □□□□□ □□□□□□ □□□□□ ← □□□□□□ □□□□□ ← □□□□□□ □□□□□ ← □□□□□ □□□□□ ← PTH ← □□□□□ ← □□□□□ □□□□□ ← □□□□□ □□□□□ ← □□□ □□□□□ ← □□□ □□□□□ □□□□□ ← □□□□□□□□ □□□ □□□□□□□□ □□□□□ □□□□□ □□□□□ ← □□□□□ ← E / T ← □□□□□□ □□□□□□.