

## PCB 0-PCB

: . PCB MCPCB. S / S 96-48 8-4 24 .  
 ( )

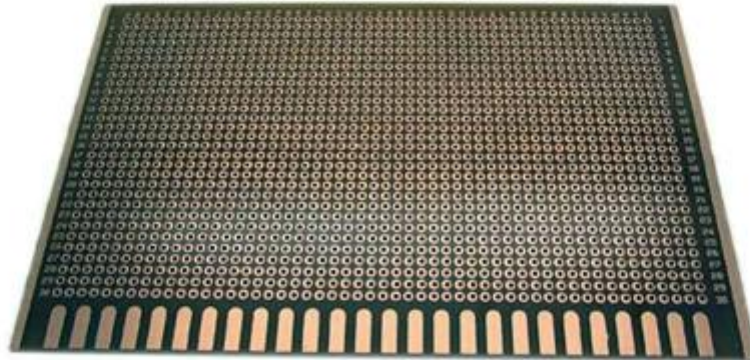
025. .. 0.020

/ 25  
 .

:

## PCB

/ 150	150
1	1
3.2	3.2
thk 1	1
/	/
/	/
/	/
S / N (Tol)	
ENIG (Au: 0.05um)	ENIG (Au: 0.05um)
Dim X (mm): 27 Y (45 :	Dim X (mm): 27 Y (45 :
Dim X (mm): 27 Dim Y (mm): 135 UPS: 3	Dim X (mm): 27 Dim Y (mm): 135 UPS: 3
CNC +	CNC +



[www.o-leading.com](http://www.o-leading.com)













